

Corporate & Community Services Committee Meeting

Agenda for Monday 17 November 2014



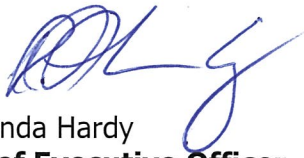
**shire of
kalamunda**

NOTICE OF MEETING CORPORATE & COMMUNITY SERVICES COMMITTEE

Dear Councillors

Notice is hereby given that the next meeting of the Corporate & Community Services Committee will be held in the Council Chambers, Administration Centre, 2 Railway Road, Kalamunda on **Monday 17 November 2014 at 6.30pm.**

Dinner will be served prior to the meeting, at 5.30pm.



Rhonda Hardy
Chief Executive Officer
12 November 2014

Our Vision and Our Values

Our Vision

The Shire will have a diversity of lifestyle and people. It will take pride in caring for the natural, social, cultural and built environments and provide opportunities for people of all ages.

Our Core Values

Service – We deliver excellent service by actively engaging and listening to each other.

Respect – We trust and respect each other by valuing our difference, communicating openly and showing integrity in all we do.

Diversity – We challenge ourselves by keeping our minds open and looking for all possibilities and opportunities.

Ethics – We provide honest, open, equitable and responsive leadership by demonstrating high standards of ethical behavior.

Our Aspirational Values

Prosperity – We will ensure our Shire has a robust economy through a mixture of industrial and commercial development.

Harmony – We will retain our natural assets in balance with our built environment.

Courage – We take risks that are calculated to lead us to a bold new future.

Creativity – We create and innovate to improve all we do.

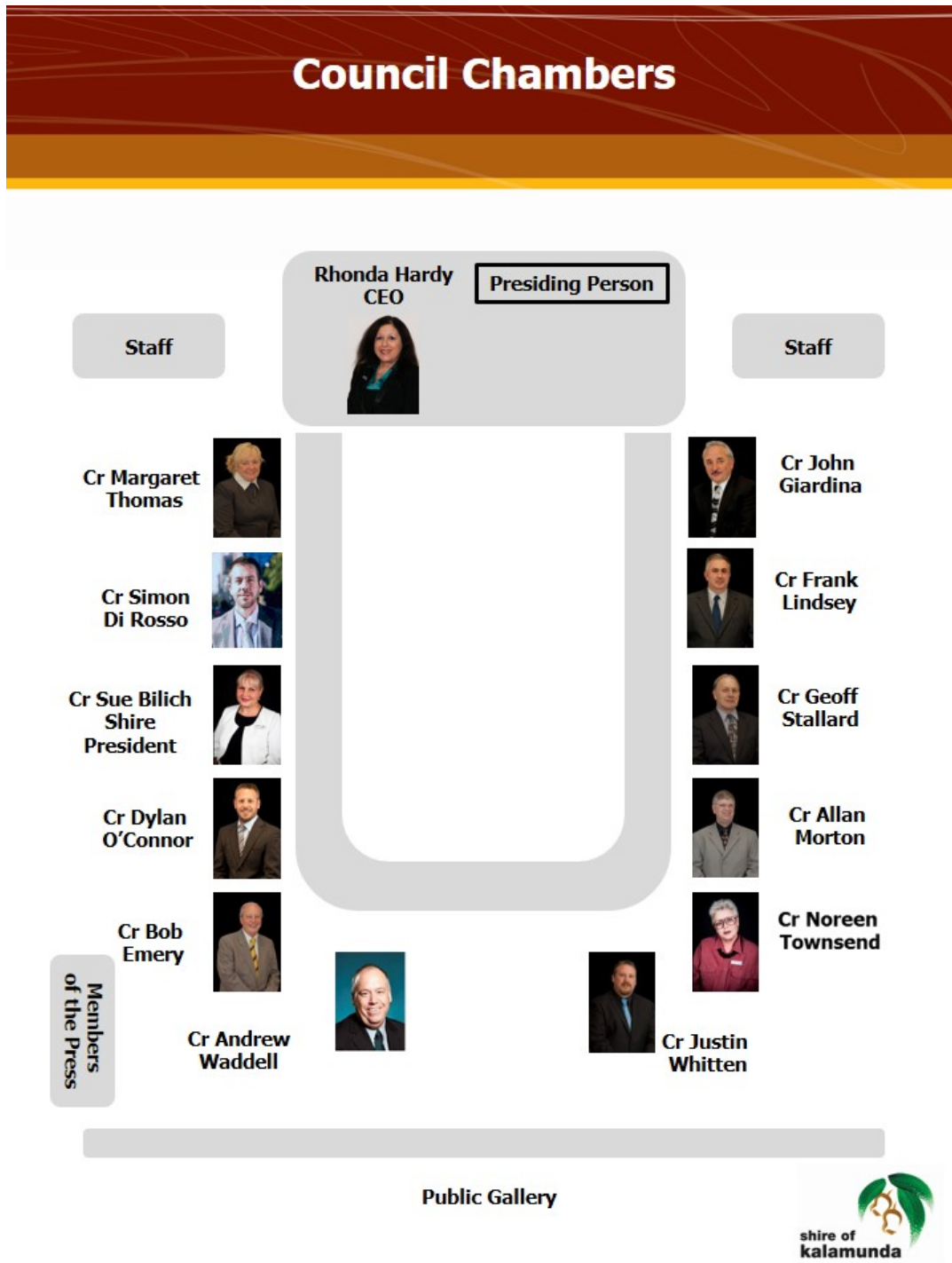


INFORMATION FOR THE PUBLIC ATTENDING COMMITTEE OR COUNCIL MEETINGS

Welcome to this evening's meeting. The following information is provided on the meeting and matters which may affect members of the public.

If you have any queries related to procedural matters, please contact a member of staff.

Council Chambers – Seating Layout



Standing Committee Meetings – Procedures

1. Standing Committees are open to the public, except for Confidential Items listed on the Agenda.
2. Shire of Kalamunda Standing Committees have a membership of all 12 Councillors.
3. Unless otherwise advised a Standing Committee makes recommendations only to the next scheduled Ordinary Council Meeting.
4. Members of the public who are unfamiliar with meeting proceedings are invited to seek advice prior to the meeting from a Shire Staff Member.
5. Members of the public are able to ask questions at a Standing Committee Meeting during Public Question Time. The questions should be related to the purposes of the Standing Committee.
6. Members of the public wishing to make a comment on any Agenda item may request to do so by advising staff prior to commencement of the Standing Committee Meeting.
7. Comment from members of the public on any item of the Agenda is usually limited to three minutes and should address the Recommendations at the conclusion of the report.
8. To facilitate the smooth running of the meeting, silence is to be observed in the public gallery at all times except for Public Question Time.
9. All other arrangements are in general accordance with Council's Standing Orders, the Policies and decision of person chairing the Committee Meeting.

Emergency Procedures

Please view the position of the Exits, Fire Extinguishers and Outdoor Assembly Area as displayed on the wall of Council Chambers.

In case of an emergency follow the instructions given by Council Personnel.

We ask that you do not move your vehicle as this could potentially block access for emergency services vehicles.

Please remain at the assembly point until advised it is safe to leave.

INDEX

1.0	OFFICIAL OPENING.....	6
2.0	ATTENDANCE, APOLOGIES AND LEAVE OF ABSENCE PREVIOUSLY APPROVED	6
3.0	PUBLIC QUESTION TIME	6
4.0	PETITIONS/DEPUTATIONS	6
5.0	CONFIRMATION OF MINUTES OF PREVIOUS MEETING.....	6
6.0	ANNOUNCEMENTS BY THE PRESIDING MEMBER WITHOUT DISCUSSION.....	6
7.0	MATTERS FOR WHICH MEETING MAY BE CLOSED	6
8.0	DISCLOSURE OF INTERESTS.....	7
9.0	REPORTS TO COUNCIL	7
	48. DEBTORS AND CREDITORS REPORT FOR THE PERIOD ENDED 31 OCTOBER 2014.....	8
	49. RATES DEBTORS REPORT FOR THE PERIOD ENDED 31 OCTOBER 2014	49
	50. QUARTERLY PROGRESS REPORT – JULY-SEPTEMBER 2014	54
	51. SCHEDULE OF COUNCIL AND COMMITTEE MEETINGS 2015	59
	52. PETITION REQUESTING APPROVAL AND COMPLETION OF PLAYGROUND AT PUBLIC OPEN SPACE ON BLUEBELL AVENUE, HIGH WYCOMBE	63
	53. CONFIDENTIAL REPORT - CONSIDERATION OF TENDERS – FORRESTFIELD SKATE PARK (RFT 1403).....	75
10.0	MOTIONS OF WHICH PREVIOUS NOTICE HAS BEEN GIVEN	76
11.0	QUESTIONS BY MEMBERS WITHOUT NOTICE	76
12.0	QUESTIONS BY MEMBERS OF WHICH DUE NOTICE HAS BEEN GIVEN	76
13.0	URGENT BUSINESS APPROVED BY THE PRESIDING MEMBER OR BY DECISION.....	76
14.0	MEETING CLOSED TO THE PUBLIC	76
15.0	CLOSURE	76

AGENDA

1.0 OFFICIAL OPENING

- 1.1 As the Presiding Member and Deputy Presiding Member are both absent, then in accordance with Section 5.14(b) of the *Local Government Act (1995)* the Committee Members present at this meeting are to choose one of themselves to preside.

2.0 ATTENDANCE, APOLOGIES AND LEAVE OF ABSENCE PREVIOUSLY APPROVED

- 2.1 Cr Noreen Townsend, leave of absence
2.2 Cr Allan Morton, apology

3.0 PUBLIC QUESTION TIME

A period of not less than 15 minutes is provided to allow questions from the gallery on matters relating to the functions of this Committee. For the purposes of Minuting, these questions and answers will be summarised.

4.0 PETITIONS/DEPUTATIONS

5.0 CONFIRMATION OF MINUTES OF PREVIOUS MEETING

- 5.1 That the Minutes of the Corporate & Community Services Committee Meeting held on 20 October 2014, as published and circulated, are confirmed as a true and accurate record of the proceedings.

Moved:

Seconded:

Vote:

Statement by Presiding Member

"On the basis of the above Motion, I now sign the minutes as a true and accurate record of the meeting of 20 October 2014".

6.0 ANNOUNCEMENTS BY THE PRESIDING MEMBER WITHOUT DISCUSSION

7.0 MATTERS FOR WHICH MEETING MAY BE CLOSED

- 7.1 **53. CONFIDENTIAL REPORT Consideration of Tenders – Forrestfield Skate Park (RTF 1403) - Reason for Confidentiality** *Local Government Act 1995 S5.23 (d) (c) – "a contract entered into, or which may be entered into, by the local government which relates to a matter to be discussed at the meeting."*

8.0 DISCLOSURE OF INTERESTS

8.1 Disclosure of Financial and Proximity Interests

- a. Members must disclose the nature of their interest in matters to be discussed at the meeting. (Section 5.65 of the *Local Government Act 1995*.)
- b. Employees must disclose the nature of their interest in reports or advice when giving the report or advice to the meeting. (Section 5.70 of the *Local Government Act 1995*.)

8.2 Disclosure of Interest Affecting Impartiality

- a. Members and staff must disclose their interest in matters to be discussed at the meeting in respect of which the member or employee had given or will give advice.

9.0 REPORTS TO COUNCIL

Please Note: declaration of financial/conflict of interests to be recorded prior to dealing with each item.

Declaration of financial / conflict of interests to be recorded prior to dealing with each item.

48. Debtors and Creditors Report for the Period Ended 31 October 2014

Previous Items	N/A
Responsible Officer	Director Corporate Services
Service Area	Finance
File Reference	FI-CRS-002
Applicant	N/A
Owner	N/A

Attachment 1	Creditors Payment Listing for the month of October 2014
Attachment 2	Summary of Debtors for the month of October 2014
Attachment 3	Summary of Creditors for the month of October 2014

PURPOSE

1. To receive the monthly report on creditors payment listings for the month of October 2014 (Attachments 1).
2. To receive the monthly report on debtors and creditors (Attachments 2 and 3).

BACKGROUND

3. Council has requested reports detailing outstanding debtors and creditors on a monthly basis.

DETAILS

Debtors

4. Invoices over 31 days total \$5,483.36, debts of significance are:
 - City of Vincent, \$2,306.59 – advertising expenses;
 - Roman Antoniuk, \$1,660.56 – planning amendments and;
 - Kalamunda Cricket Club, \$1,138.21 – Loan 207
5. Invoices over 60 days total \$15,753.13, debts of significance are:
 - Kalamunda Club, \$10,109.86 – Loan 219 and;
 - Zig Zag Café, \$3,671.26 – lease/operating expenses
6. Invoices over 90 days total \$567,963.13, debts of significance are:
 - Discovery Parks, \$81,920.00 – annual waste charge;
 - Kalamunda & Districts Football, \$1,887.79 – operating expenses;
 - Kalamunda Cricket Club, \$3,636.98 – operating expenses, to be offset against sponsorship assistance;
 - Matt Stuart, \$165,000.00 – developer contribution, legal action underway;
 - Velo Zupanovich, \$299,590.50 – developer contribution, matter to be heard at the State Administrative Tribunal and;
 - Zig Zag Café, \$2,164.24 – lease/operating expenses.

Creditors

7. Payments totalling \$4,009,378.95 were made during the month of October 2014. Standard payment terms are 31 days from the end of the month, with local businesses and contractors on 14 day terms.

8. Significant Municipal payments made in the month were:

Supplier	Purpose	\$
Australian Tax Office	PAYG payments	328,868.43
Beaver Tree Services	Tree removal/pruning	315,137.92
DMC Cleaning	Cleaning various buildings	53,697.88
Eastern Metropolitan Regional Council	Domestic/Waste Charges and disposal fees	325,538.34
Perth Waste Pty Ltd	Weekly collection and disposal of waste services	317,618.97
Local Government Insurance Scheme (LGIS)	Various insurance covers – 2 nd instalment	481,453.04
Synergy	Power charges	149,570.25
Sunstyle Holdings Pty Ltd	Cash in Lieu – public open space – 24 Elmore Way, High Wycombe – WAPC 134818	278,988
WA Local Government Association (WALGA)	WALGA annual subscription, advertising and conference training costs	59,851.35
WA Local Government Superannuation Plan	Superannuation contributions	181,268.85
Main Roads (WA)	Referral of Grants for 2013/14 – Kalamunda Rd project	71,404,.30
West Australian Treasury Corporation	Loan Repayments - various	97,745.85

9. These payments total \$2,661,143.18 and represent 66% of all payments for the month.

Trust Account Payments

10. The Trust Accounts maintained by the Shire relate to the following types:

- CELL 9 Trust
- POS Trust
- BCITF Levy
- Building Licence Levy
- Unclaimed Monies

11. The following payments were made from the Trust Accounts in the month of October 2014.

Cell 9 Trust		Amount (\$)
Date	Description	
27/10/2014	Opteon – valuation fees	5,500.00
BCITF Levy		Amount (\$)
Date	Description	
3/10/2014	Payment to Building and Construction Industry Training Fund – September 2014	12,099.26
Building Licence Levy		Amount (\$)
Date	Description	
7/10/2014	Rural Building Company Pty Ltd – building application refund	593.64
Forrestfield Industrial Area		Amount (\$)
Date	Description	
29/8/2014	McLeods – Legal expenses – Lot 211 Nardine Close, High Wycombe	2,799.92
16/9/2014	Kott Gunning – Legal expense – Lot 204 Nardine Close, High Wycombe	293.60

STATUTORY AND LEGAL CONSIDERATIONS

12. In accordance with the requirements of the *Local Government (Financial Management) Regulations 1996 (Regulation 13)* a list of accounts paid by the Chief Executive Officer is to be prepared each month and presented in the manner required as per the Regulation.

POLICY CONSIDERATIONS

13. Nil.

COMMUNITY ENGAGEMENT REQUIREMENTS

14. Nil.

FINANCIAL CONSIDERATIONS

15. Nil.

STRATEGIC COMMUNITY PLAN

Strategic Planning Alignment

16. *Kalamunda Advancing: Strategic Community Plan to 2023*

OBJECTIVE 6.8 - To ensure financial sustainability through the implementation of effective financial management, systems and plans.

Strategy 6.8.4 Provide effective financial services to support the Shire's operations and to meet sustainability planning, reporting and accountability requirements.

SUSTAINABILITY

Social Implications

17. Nil.

Economic Implications

18. Nil.

Environmental Implications

19. Nil.

RISK MANAGEMENT CONSIDERATIONS

Debtors

20.

Risk	Likelihood	Consequence	Rating	Action/Strategy
The Shire is exposed to the potential risk of the debtor failing to make payments which it is obligated to do. This will result in the disruption of cash flows and increased collection costs. The loss may be complete or partial and can arise in a number of circumstances.	Possible	Minor	Low	Ensure debt collections is rigorously managed.

Creditors

21.	Risk	Likelihood	Consequence	Rating	Action/Strategy
	If the Shire defaults on payment to a creditor, the Shire runs the risk of an adverse credit record resulting in potential future disruptions on cash flows and ability to obtain credit.	Unlikely	Major	Low	Ensure all disputes are resolved in a timely manner.

OFFICER COMMENT

22. Nil.

Voting Requirements: Simple Majority

OFFICER RECOMMENDATION (C&C 48/2014)

That Council:

1. Receives the list of payments made from the Municipal Accounts in October 2014 (Attachment 1) in accordance with the requirements of the *Local Government (Financial Management) Regulations 1996 (Regulation 12)*.
2. Receives the list of payments made from the Trust Accounts in October 2014 as noted in point 11 above in accordance with the requirements of the *Local Government (Financial Management) Regulations 1996 (Regulation 12)*.
3. Receives the outstanding debtors (Attachment 2) and creditors (Attachment 3) reports for the month of October 2014.

Moved:

Seconded:

Vote:

Attachment 1

Chq/EFT	Date	Name	Description	Amount
760	01/10/2014	NATIONAL AUSTRALIA BANK LTD	MONTHLY HIRE PURCHASE REPAYMENT FOR TOYOTA HILUX FOR THE COMMUNITY FIRE MANAGER	1018.51
761	02/10/2014	WESTERN AUSTRALIAN TREASURY CORPORATION	LOAN # 228 FIXED COMPONENT	48621.67
762	08/10/2014	AUSTRALIAN TAXATION OFFICE	TAXATION	160302.03
763	08/10/2014	LES MILLS AUSTRALIA	MONTHLY LICENCE FEE	1000.54
764	09/10/2014	IINET TECHNOLOGIES PTY LTD	INTERNET ACCESS	735.04
765	09/10/2014	WESTERN AUSTRALIAN TREASURY CORPORATION	LOAN # 208 INTEREST PAYMENT	11346.28
766	10/10/2014	COMMONWEALTH BANK - BUSINESS CARD	BUSINESS CORPORATE CARD - VARIOUS PURCHASES HACC ACTIVITY OFFICER - \$1656.00 LIBRARY SERVICES TEAM LEADER - \$1501.38 HACC ACTIVITY OFFICER - \$40.00 BUILDING MAINTENANCE OFFICER - \$568.23 HACC ACTIVITY OFFICER - \$84.00 FUNCTIONS CO-ORDINATOR - \$2897.18 BUILDING MAINTENANCE OFFICER - \$40.00 CO-ORDINATOR PROCUREMENT - \$5630.76 HACC ACTIVITY OFFICER - \$64.99 HACC ACTIVITY OFFICER - \$1083.06 HACC ACTIVITY OFFICER - \$40.00 BUILDING MAINTENANCE OFFICER - \$142.65 MANAGER HR - \$673.99 DAY CENTRE CO-ORDINATOR - \$492.80	14915.04
767	13/10/2014	WESTERN AUSTRALIAN TREASURY CORPORATION	LOAN # 223 FIXED COMPONENT	35165.56

Chq/EFT	Date	Name	Description	Amount
768	22/10/2014	AUSTRALIAN TAXATION OFFICE	TAXATION	168566.40
769	23/10/2014	WESTERN AUSTRALIAN TREASURY CORPORATION	LOAN # 215 INTEREST PAYMENT	2612.34
EFT39002	09/10/2014	MOTORCHARGE - WRIGHT EXPRESS FUEL CARDS AUSTRALIA LTD	FUEL - PERIOD ENDING 30 SEPTEMBER 2014	5449.03
EFT39003	09/10/2014	HARVEY NORMAN AVIT SUPERSTORE CANNINGTON	ELECTRICIAL SUPPLIES	179.00
EFT39004	09/10/2014	NEVERFAIL SPRINGWATER LTD (KALA LIB)	BOTTLED WATER SUPPLIES / MAINTENANCE	101.86
EFT39005	09/10/2014	JOSHUA HOCKLEY	TECHNICAL SERVICES	165.00
EFT39006	09/10/2014	CA TECHNOLOGY PTY LTD	ANNUAL LICENCE FEE - SEPTEMBER 2014 - AUGUST 2015	26494.60
EFT39007	09/10/2014	OLK & ASSOCIATES	ARCHITECTURAL SERVICES FOR VARIOUS LOCATIONS	6380.00
EFT39008	09/10/2014	NEVERFAIL SPRINGWATERLTD (FORRESTFIELD LIB)	BOTTLED WATER SUPPLIES / MAINTENANCE	16.45
EFT39009	09/10/2014	ID CONSULTING PTY LTD (INFORMED DECISIONS)	FORECAST ID AND PROFILE ID QUARTERLY SUBSCRIPTION FEE FOR OCTOBER TO DECEMBER 2014	7755.00
EFT39010	09/10/2014	MACQUARIE EQUIPMENT FINANCE PTY LTD	EQUIPMENT BUYOUT FOR LAPTOPS	886.62
EFT39011	09/10/2014	BEES HIRE & SALES	CONSTRUCTION HIRE EQUIPMENT	191.40
EFT39012	09/10/2014	VIP CARPET AND UPHOLSTERY CLEANING SERVICE	CARPET CLEANING AT VARIOUS LOCATIONS	1899.00
EFT39013	09/10/2014	UPTEMPO DESIGN	UNIFORM SUPPLIES	280.50
EFT39014	09/10/2014	J & K HOPKINS	OFFICE FURNITURE / SUPPLIES FOR KALAMUNDA COMMUNITY CARE	539.00
EFT39015	09/10/2014	PAUL DALBY	CROSSOVER CONTRIBUTION	400.00
EFT39016	09/10/2014	CAROL ANNE CRUTE	CONSIGNMENT SUPPLIER - ZIG ZAG CULTURAL CENTRE - 01/09/14 -30/09/14	37.10
EFT39017	09/10/2014	RICHARD H & JENNIFER M TESCH	FOOTPATH DEPOSIT REFUND	1500.00
EFT39018	09/10/2014	DAPHNE LEMKE	TRAVEL COMMUNITY VISITORS SCHEME REFUND	52.50

Chq/EFT	Date	Name	Description	Amount
EFT39019	09/10/2014	MARILYN KEYS	REFUND OF VARIOUS COSTS	91.22
EFT39020	09/10/2014	JOHN JAMES WEST	RATES REFUND	237.27
EFT39021	09/10/2014	ALAN & SUSAN DALGLEISH	FOOTPATH DEPOSIT REFUND	1000.00
EFT39022	09/10/2014	GILL BAXTER	CONSIGNMENT SUPPLIER - ZIG ZAG CULTURAL CENTRE - 01/09/14 -30/09/14	10.50
EFT39023	09/10/2014	TARITA NOMINEES PTY LTD	RATES REFUND	787.32
EFT39024	09/10/2014	BARBARA J FLYNN	KEY BOND REFUND	50.00
EFT39025	09/10/2014	LYNETTE CARTER	FOOTPATH DEPOSIT REFUND	1000.00
EFT39026	09/10/2014	WA LOCAL GOVERNMENT SUPERANNUATION PLAN	SUPERANNUATION CONTRIBUTIONS	89058.42
EFT39027	09/10/2014	SHIRE OF KALAMUNDA STAFF SOCIAL CLUB	PAYROLL DEDUCTIONS	316.00
EFT39028	09/10/2014	CHILD SUPPORT AGENCY	PAYROLL DEDUCTIONS	591.85
EFT39029	09/10/2014	AUSTRALIA POST	COUNTER BILLPAY TRANSACTION FEES	1473.51
EFT39030	09/10/2014	COVS PARTS PTY LTD	PLANT / VEHICLE PARTS	992.59
EFT39031	09/10/2014	LANDGATE	LAND ENQUIRIES FOR VARIOUS LOCATIONS	168.00
EFT39032	09/10/2014	KALAMUNDA TOYOTA	PLANT / VEHICLE PARTS	355.97
EFT39033	09/10/2014	WA LOCAL GOVERNMENT ASSOCIATION	WALGA ANNUAL SUBSCRIPTION - 01/07/14 - 30/06/14	33866.80
EFT39034	09/10/2014	MCLEODS BARRISTERS & SOLICITORS	LEGAL EXPENSES	5400.16
EFT39035	09/10/2014	SESCO SECURITY CO	SECURITY MONITORING SERVICES FOR VARIOUS LOCATIONS	5050.36
EFT39036	09/10/2014	LANDGATE - VALUATIONS	VALUATIONS FOR VARIOUS LOCATIONS	573.47
EFT39037	09/10/2014	WALKERS HARDWARE (MITRE 10)	HARDWARE SUPPLIES	291.48
EFT39038	09/10/2014	BORAL CONSTRUCTION MATERIALS GROUP	ROAD MATERIALS FOR VARIOUS LOCATIONS	1379.24
EFT39039	09/10/2014	A & S HILL	ELECTRICIAL REPAIRS / MAINTENANCE FOR VARIOUS LOCATIONS	6692.18
EFT39040	09/10/2014	FASTA COURIERS	COURIER FEES	330.06
EFT39041	09/10/2014	THE WATERSHED WATER SYSTEMS	RETICULATION PARTS FOR VARIOUS RESERVES	4076.66
EFT39042	09/10/2014	ALSCO LINEN SERVICE	LINEN HIRE / LAUNDRY SERVICES	599.38

Chq/EFT	Date	Name	Description	Amount
EFT39043	09/10/2014	BRADOCK PODIATRY SERVICES PTY LTD	PODIATRY SERVICES AT JACK HEALEY CENTRE	1072.98
EFT39044	09/10/2014	KALA BOB KATS PTY LTD	PLANT EQUIPMENT AND OPERATOR HIRE FOR VARIOUS LOCATIONS	1565.30
EFT39045	09/10/2014	GRONBEK SECURITY	SECURITY KEY SERVICES TO VARIOUS LOCATIONS	491.96
EFT39046	09/10/2014	GRIMES CONTRACTING PTY LTD	CONTRACTOR BUILDING MAINTENANCE FOR VARIOUS BUILDINGS	6509.36
EFT39047	09/10/2014	BGC ASPHALT	ROAD MATERIALS FOR VARIOUS LOCATIONS	513.07
EFT39048	09/10/2014	WESTSIDE FIRE SERVICES	TESTING AND INSPECTION OF FIRE EQUIPMENT / SUPPLIES	1096.70
EFT39049	09/10/2014	HILL TOP TROPHIES (MILPRO WA)	SUPPLY OF NAME BADGES	108.90
EFT39050	09/10/2014	BRICK CONCEPTS	CROSSOVER MAINTENANCE / REPAIRS FOR VARIOUS LOCATIONS	385.00
EFT39051	09/10/2014	FOODWORKS FRESH FORRESTFIELD	GROCERY SUPPLIES	970.23
EFT39052	09/10/2014	AUSTRALASIAN PERFORMING RIGHTS ASSOCIATION	LICENCE FEE FOR THE USE OF COPYRIGHT MUSIC FOR HARTFIELD AND HIGH WYCOMBE RECEPTION CENTRES	1368.78
EFT39053	09/10/2014	LO-GO APPOINTMENTS	HIRE OF TEMPORARY STAFF FOR DEPOT / ADMIN	4195.62
EFT39054	09/10/2014	IAN GRAHAM NORTH	HALL AND KEY BOND REFUND	350.00
EFT39055	09/10/2014	AIR LIQUIDE WA PTY LTD	GAS BOTTLE FACILITY FEE	343.96
EFT39056	09/10/2014	GILFORD BUILDING SERVICES	FOOTPATH DEPOSIT REFUND	1000.00
EFT39057	09/10/2014	LOVEGROVE TURF SERVICES	TURF MAINTENANCE / SERVICES AT VARIOUS LOCATIONS	28556.00
EFT39058	09/10/2014	KALAMUNDA & DISTRICTS HISTORICAL SOCIETY	CONSIGNMENT SUPPLIER - ZIG ZAG CULTURAL CENTRE - 01/09/14 -30/09/14	304.50
EFT39059	09/10/2014	CRABBS KALAMUNDA (IGA)	GROCERY SUPPLIES	119.96
EFT39060	09/10/2014	VENTURA HOMES PTY LTD	FOOTPATH DEPOSIT REFUNDS	4400.00
EFT39061	09/10/2014	KALAMUNDA DISTRICT PIPE BAND	KALAMUNDA PIPE BAND PERFORMANCE FOR WALK THE ZIG ZAG 2014	400.00
EFT39062	09/10/2014	DALE ALCOCK HOMES PTY LTD	FOOTPATH DEPOSIT REFUND	1000.00

Chq/EFT	Date	Name	Description	Amount
EFT39063	09/10/2014	WATTLE GROVE VETERINARY HOSPITAL	VETERINARY FEES	370.00
EFT39064	09/10/2014	LITTLE LOADS	GARDEN / VERGE SUPPLIES FOR VARIOUS LOCATIONS	496.10
EFT39065	09/10/2014	ELIZABETH BISHOP	CONSIGNMENT SUPPLIER - ZIG ZAG CULTURAL CENTRE - 01/09/14 -30/09/14	14.00
EFT39066	09/10/2014	GEM CAMERA CLUB INC	BOND REFUND FOR THE USE OF THE SEMINAR ROOM AT THE ZIG ZAG CULTURAL CENTRE	300.00
EFT39067	09/10/2014	KALAMUNDA CRICKET CLUB	ANNUAL TURF MAINTENANCE GRANT FOR KALAMUNDA CRICKET CLUB. TURF WICKET MAINTENANCE 2014/15 SUMMER SEASON	11500.00
EFT39068	09/10/2014	COMMISSIONER OF POLICE	VOLUNTEER POLICE CHECKS	411.60
EFT39069	09/10/2014	SWAN MARQUEES AND PARTY HIRE	MARQUEES AND EQUIPMENT HIRE FOR WALK THE ZIG ZAG 2014	12884.80
EFT39070	09/10/2014	HAWLEY'S BOBCAT SERVICE	PLANT EQUIPMENT AND OPERATOR HIRE FOR VARIOUS LOCATIONS	7779.20
EFT39071	09/10/2014	HIGH WYCOMBE JUNIOR FOOTBALL CLUB	HALL BOND REFUND	300.00
EFT39072	09/10/2014	FORRESTFIELD NEWSPAPERS & MAGAZINES DELIVERY	NEWSPAPERS / MAGAZINES DELIVERIES FOR VARIOUS LOCATIONS	74.60
EFT39073	09/10/2014	LOCAL GOVERNMENT MANAGERS AUSTRALIA (WA DIVISION)	REGISTRATION FOR 1 STAFF TO ATTEND LGMA ANNUAL STATE CONFERENCE 2014	610.00
EFT39074	09/10/2014	DIGITAL MAPPING SOLUTIONS	GIS CONSULTING SERVICES	14652.00
EFT39075	09/10/2014	DICK SMITH ELECTRONICS	ELECTRICAL SUPPLIES	120.81
EFT39076	09/10/2014	AUSTPEAK CONSTRUCTIONS	RETURN OF OUTSTANDING WORKS BOND - WAPC 137141 - LOT 4 (5) LITTLEFIELD ROAD HIGH WYCOMBE	5000.00
EFT39077	09/10/2014	CENTAMAN SYSTEMS PTY LTD	2014/2015 CENTAMAN LICENCES FOR VARIOUS LOCATIONS	15505.05
EFT39078	09/10/2014	HILL TOP GROUP PTY	CONTRACTOR BUILDING MAINTENANCE FOR VARIOUS BUILDINGS	13335.28

Chq/EFT	Date	Name	Description	Amount
EFT39079	09/10/2014	A1 WALLISTON TREE SERVICES	TREE REMOVAL / PRUNING FOR VARIOUS LOCATIONS	1100.00
EFT39080	09/10/2014	MARKETING FOCUS	PART PAYMENT FOR PRESENTATION AT BUSINESS BREAKFAST AT THE WOODLUPINE CENTRE	1100.00
EFT39081	09/10/2014	UHY HAINES NORTON	AUDIT CERTIFICATION IN RESPECT OF DLG METRO LOCAL GOVERNMENT REFORM FUNDING FOR YEAR ENDING 30/06/14	1540.00
EFT39082	09/10/2014	IRRIGATION AUSTRALIA LTD	ANNUAL MEMBERSHIP SUBSCRIPTIONS FOR VARIOUS STAFF	722.00
EFT39083	09/10/2014	TRILOGY SERVICING PTY LTD	AIRCONDITIONING MAINTENANCE / REPAIRS FOR VARIOUS LOCATIONS	12047.67
EFT39084	09/10/2014	CELEBRATION HOMES	FOOTPATH DEPOSIT REFUND	1000.00
EFT39085	09/10/2014	KEYNOTE CONFERENCES	REGISTRATION FOR 2 STAFF TO ATTEND THE WASTE & RECYCLE CONFERENCE 2014	360.00
EFT39086	09/10/2014	DEBBIE JOSE JEWELLERY	CONSIGNMENT SUPPLIER - ZIG ZAG CULTURAL CENTRE - 01/09/14 -30/09/14	38.50
EFT39087	09/10/2014	MCDOWALL AFFLECK PTY LTD	CONSULTING FEES FOR DESIGN AND DOCUMENTATION AT SCOTT RESERVE PAVILION AND KOSTERA OVAL REDEVELOPMENT	1958.00
EFT39088	09/10/2014	COMMUNITY NEWSPAPER GROUP LTD	ADVERTISING FOR VARIOUS JOBS AND EVENTS	3839.65
EFT39089	09/10/2014	KANYANA WILDLIFE REHABILITATION CENTRE INC	CONSIGNMENT SUPPLIER - ZIG ZAG CULTURAL CENTRE - 01/09/14 -30/09/14	145.60
EFT39090	09/10/2014	KRISTIE MOILER	CONSIGNMENT SUPPLIER - ZIG ZAG CULTURAL CENTRE - 01/09/14 -30/09/14	28.70
EFT39091	09/10/2014	ZIG ZAG COMMUNITY ARTS INC	BLACK CHOOK CHUTNEY BAND - PERFORMANCE FOR WALK THE ZIG ZAG 2014	500.00
EFT39092	09/10/2014	FOOD TECHNOLOGY SERVICES PTY LTD	HIRE OF TEMPORARY STAFF FOR HEALTH DEPARTMENT	3214.75
EFT39093	09/10/2014	1ST GOOSEBERRY HILL SCOUT GROUP	KIDSPORT FUNDING FOR VARIOUS PLAYERS	400.00

Chq/EFT	Date	Name	Description	Amount
EFT39094	09/10/2014	COCA-COLA AMATIL (AUST) PTY LTD	KIOSK SUPPLIES FOR HARTFIELD RECREATION CENTRE	1307.32
EFT39095	09/10/2014	CONFECT - EXPRESS	KIOSK SUPPLIES FOR HARTFIELD RECREATION CENTRE	505.33
EFT39096	09/10/2014	DENIS JOHN NEVIN	RATES REFUND	230.00
EFT39097	09/10/2014	HILLS GOURMET	CATERING SUPPLIES	1670.31
EFT39098	09/10/2014	HOG HILL BOYS - JOHN BIGGERSTAFF	ENTERTAINMENT FOR 2014 WALK THE ZIG ZAG	500.00
EFT39099	09/10/2014	GEMMILL HOMES	FOOTPATH DEPOSIT REFUND	1000.00
EFT39100	09/10/2014	ROBERT WOOD	CONSIGNMENT SUPPLIER - ZIG ZAG CULTURAL CENTRE - 01/09/14 -30/09/14	4.20
EFT39101	09/10/2014	TWO WAY HIRE SERVICES PTY LTD	EQUIPMENT HIRE FOR WALK THE ZIG ZAG 2014	341.00
EFT39102	09/10/2014	WOOLWORTHS LIMITED	GROCERY SUPPLIES	202.85
EFT39103	09/10/2014	PHIL PROSSER	RETURN OF CROSSOVER BONDS FOR VARIOUS LOCATIONS	3493.75
EFT39104	09/10/2014	KERB - FIX	KERB REPAIRS / MAINTENANCE FOR VARIOUS LOCATIONS	1796.30
EFT39105	09/10/2014	EASTERN REGION SECURITY	SECURITY SERVICES TO VARIOUS SHIRE BUILDINGS	6150.00
EFT39106	09/10/2014	G.D.CHARLTON	PODIATRY SERVICES AT JACK HEALEY CENTRE	905.77
EFT39107	09/10/2014	WEBSITE WEED & PEST PTY LTD	WEED CONTROL AT VARIOUS LOCATIONS	12862.91
EFT39108	09/10/2014	SECURE TRAFFIC	TRAFFIC MANAGEMENT FOR VARIOUS LOCATIONS	8671.30
EFT39109	09/10/2014	CASTLEDINE & CASTLEDINE DESIGNERS	DESIGN AND PRODUCTION OF ARTWORK FOR VARIOUS LOCATIONS	2959.00
EFT39110	09/10/2014	NATALIE WARBURTON - ANATOMY DESIGNS	CONSIGNMENT SUPPLIER - ZIG ZAG CULTURAL CENTRE - 01/09/14 -30/09/14	4.20
EFT39111	09/10/2014	ALLAN DAVIES & TREVOR CHUDLEIGH ARCHITECTS	ARCHITECTURAL SERVICES	968.00
EFT39112	09/10/2014	JENNIFER BURGESS	RATES REFUND	1269.98
EFT39113	09/10/2014	DEBORAH CORK	TRAVEL COMMUNITY VISITORS SCHEME REFUND	37.50
EFT39114	09/10/2014	CALAMUNDA CAMELS PTY LTD	HIRE OF 3 CAMELS FOR WALK THE ZIG ZAG 2014	1750.00

Chq/EFT	Date	Name	Description	Amount
EFT39115	09/10/2014	AUSTRALIAN SUPERANNUATION	SUPERANNUATION CONTRIBUTIONS	1180.03
EFT39116	09/10/2014	REDINK HOMES PTY LTD	FOOTPATH DEPOSIT REFUND	1000.00
EFT39117	09/10/2014	SHIRLEY SPENCER	CONSIGNMENT SUPPLIER - ZIG ZAG CULTURAL CENTRE - 01/09/14 -30/09/14	171.50
EFT39118	09/10/2014	BEST CONSULTANTS PTY LTD	ELECTRICAL CONSULTING SERVICES FOR VARIOUS LOCATIONS	15400.00
EFT39119	09/10/2014	TOWNLEY'S PLUMBING & GAS SERVICE	PLUMBING SERVICES AT VARIOUS LOCATIONS	522.50
EFT39120	09/10/2014	PETER TUCATS SUPERANNUATION FUND	SUPERANNUATION CONTRIBUTIONS	263.63
EFT39121	09/10/2014	NEVERFAIL SPRINGWATER LTD (PETER ANDERTON CEN)	BOTTLED WATER SUPPLIES / MAINTENANCE	35.10
EFT39122	09/10/2014	CAITLIN HARRAP	HALL AND KEY BOND REFUND	350.00
EFT39123	09/10/2014	NEVERFAIL SPRINGWATER LTD (ZZCC)	BOTTLED WATER SUPPLIES / MAINTENANCE	28.00
EFT39124	09/10/2014	BRIKMAKERS	SUPPLY OF BRICKS	1001.09
EFT39125	09/10/2014	STEPHEN SOON	HALL BOND REFUND	50.00
EFT39126	09/10/2014	PH CONCRETE (WA) PTY LTD	FOOTPATH MAINTENANCE / REPAIRS FOR VARIOUS LOCATIONS	14459.58
EFT39127	09/10/2014	IDEAL HOMES PTY LTD	FOOTPATH DEPOSIT REFUND	1000.00
EFT39128	09/10/2014	HAMMOND LEGAL	LEGAL EXPENSES	5188.34
EFT39129	09/10/2014	STATE WIDE TURF SERVICES	TURF SUPPLIES / MAINTENANCE FOR VARIOUS LOCATIONS	25104.86
EFT39130	09/10/2014	FILTREX INNOVATIVE WASTEWATER SOLUTIONS	SEPTIC TANK FEE REFUND - ST 14056 LOT 10 (1) THORNTON PLACE GOOSEBERRY HILL	118.00
EFT39131	09/10/2014	FORRESTFIELD TEEBALL/SOFTBALL ASSOCIATION INC	KIDSPORT FUNDING FOR VARIOUS PLAYERS	940.00
EFT39132	09/10/2014	JORGE'S CONTRACTING SERVICES	CLEANING SERVICES AT PETER ANDERTON CENTRE	2412.85
EFT39133	09/10/2014	BENCHMARK MAINTENANCE SERVICES	CONTRACTOR BUILDING MAINTENANCE VARIOUS BUILDINGS	698.50
EFT39134	09/10/2014	FONZ'S BOBCAT & TRUCK HIRE	PLANT EQUIPMENT AND OPERATOR HIRE FOR VARIOUS LOCATIONS	5135.22

Chq/EFT	Date	Name	Description	Amount
EFT39135	09/10/2014	NANCY GILLESPIE	CONSIGNMENT SUPPLIER - ZIG ZAG CULTURAL CENTRE - 01/09/14 -30/09/14	7.00
EFT39136	09/10/2014	BEAVER TREE SERVICES	TREE REMOVAL / PRUNING FOR VARIOUS LOCATIONS	313398.27
EFT39137	09/10/2014	WILLFRIED VOGT	FOOTPATH DEPOSIT REFUND	1000.00
EFT39138	09/10/2014	VISION SUPER PTY LTD	SUPERANNUATION CONTRIBUTIONS	915.36
EFT39139	09/10/2014	WEST-SURE GROUP	CASH IN TRANSIT SERVICES - SEPT 14	2059.20
EFT39140	09/10/2014	PATRICIA MOSS	CONSIGNMENT SUPPLIER - ZIG ZAG CULTURAL CENTRE - 01/09/14 -30/09/14	2.10
EFT39141	09/10/2014	KARIN HOTCHKIN	CONSIGNMENT SUPPLIER - ZIG ZAG CULTURAL CENTRE - 01/09/14 -30/09/14	14.00
EFT39142	09/10/2014	THE GOOD GUYS	ELECTRICIAL SUPPLIES	239.00
EFT39143	09/10/2014	FIRE 4 HIRE	VERGE / RESERVE MAINTENANCE AT VARIOUS LOCATIONS	1779.00
EFT39144	09/10/2014	JENNIFER DE YOUNG	VOLUNTEER TRANSPORT REIMBURSEMENT REFUND	373.50
EFT39145	09/10/2014	LINDSAY GOODWIN	TECHNICIAN SERVICES FOR VARIOUS EVENTS	1343.00
EFT39146	09/10/2014	PERTH HILLS JAZZ ORCHESTRA INC. (PHJO)	PERFORMANCE AT WALK THE ZIG ZAG 2014	1000.00
EFT39147	09/10/2014	STRATEGEN ENVIRONMENTAL CONSULTANTS	CONSULTING SERVICES - WILKINS ROAD - ADDITIONAL VARIATION	1306.25
EFT39148	09/10/2014	PARTY PLUS MORLEY	SUPPLIES FOR WALK THE ZIG ZAG 2014	230.00
EFT39149	09/10/2014	CLAIRE O'NEILL - CLAIRE'S EMBROIDERY	CONSIGNMENT SUPPLIER - ZIG ZAG CULTURAL CENTRE - 01/09/14 -30/09/14	278.60
EFT39150	09/10/2014	LINDA STONES	CONSIGNMENT SUPPLIER - ZIG ZAG CULTURAL CENTRE - 01/09/14 -30/09/14	124.25
EFT39151	09/10/2014	IAN MOSS	CONSIGNMENT SUPPLIER - ZIG ZAG CULTURAL CENTRE - 01/09/14 -30/09/14	91.00
EFT39152	09/10/2014	AROUNDABOUT GARDENING SERVICES	VERGE / GARDEN MAINTENANCE FOR VARIOUS LOCATIONS	3366.00

Chq/EFT	Date	Name	Description	Amount
EFT39153	09/10/2014	ADH GOLF & UTILITY VEHICLES	2 SEATER ELECTRIC GOLF CART 2 DAY HIRE FOR WALK THE ZIG ZAG 2014	561.00
EFT39154	09/10/2014	POWA INSTITUTE	FACILITATION FEE - PROJECT WORK TEAMS IN ACCORDANCE WITH THE KALAMUNDA GROW PROGRAM	5197.00
EFT39155	09/10/2014	PETER FALCONER	CONSIGNMENT SUPPLIER - ZIG ZAG CULTURAL CENTRE - 01/09/14 -30/09/14	79.10
EFT39156	09/10/2014	CITY OF STIRLING	MEALS ON WHEELS PROGRAM - AUGUST 2014	5056.26
EFT39157	09/10/2014	SAFE T CARD AUSTRALIA PTY LTD	MONTHLY MONITORING CHARGES FOR VARIOUS LOCATIONS	66.00
EFT39158	09/10/2014	FOXTEL	MONTHLY SUBSCRIPTION FEES	410.00
EFT39159	09/10/2014	MACQUARIE EQUIPMENT RENTALS PTY LTD	HPRC LEASE - CARDIO - 2014/2015	6157.74
EFT39160	09/10/2014	KIERAN INGRAM	CONSIGNMENT SUPPLIER - ZIG ZAG CULTURAL CENTRE - 01/09/14 -30/09/14	8.75
EFT39161	09/10/2014	TANGOS NETBALL CLUB	KIDSDPORT FUNDING FOR VARIOUS PLAYERS	200.00
EFT39162	09/10/2014	THE ARTFUL FLOWE - FELICIA LOWE	CONSIGNMENT SUPPLIER - ZIG ZAG CULTURAL CENTRE - 01/09/14 -30/09/14	70.00
EFT39163	09/10/2014	MPJ (WA) PTY LTD	SUPERANNUATION CONTRIBUTIONS	535.50
EFT39164	09/10/2014	SRI CHINMOY CENTRE	BOND REFUND FOR THE USE OF THE SEMINAR ROOM AT THE ZIG ZAG CULTURAL CENTRE	300.00
EFT39165	09/10/2014	MAX OGRADY - PROJECT PHOTOGRAPHY	CONSIGNMENT SUPPLIER - ZIG ZAG CULTURAL CENTRE - 01/09/14 -30/09/14	21.00
EFT39166	09/10/2014	ST FRANCIS OF ASSISI CATHOLIC CHURCH MAIDA VALE PARISH	HALL AND KEY BOND REFUND	550.00
EFT39167	09/10/2014	TOTAL GREEN RECYCLING	RECYCLING OF ELECTRICAL APPLIANCES E-WASTE	2571.03
EFT39168	09/10/2014	NICHOLAS TAYLOR PHOTOGRAPHY	CONSIGNMENT SUPPLIER - ZIG ZAG CULTURAL CENTRE - 01/09/14 -30/09/14	77.70
EFT39169	09/10/2014	SILK ON SILK (ROSEMARY LONSDALE)	CONSIGNMENT SUPPLIER - ZIG ZAG CULTURAL CENTRE - 01/09/14 -30/09/14	280.00

Chq/EFT	Date	Name	Description	Amount
EFT39170	09/10/2014	BODYSCENTS	ASSORTED MERCHANDISE ITEMS FOR THE ZIG ZAG CULTURAL CENTRE GIFT SHOP	432.80
EFT39171	09/10/2014	CUROST MILK SUPPLY	MILK SUPPLY FOR DEPOT	109.76
EFT39172	09/10/2014	MAVIS PASKULICH	CONSIGNMENT SUPPLIER - ZIG ZAG CULTURAL CENTRE - 01/09/14 -30/09/14	63.00
EFT39173	09/10/2014	AVON HILLS ENVIRONMENTAL	ROADSIDE SHRUB SPRAYING FOR THE ZIG ZAG SCENIC DRIVE	495.00
EFT39174	09/10/2014	RAZ MUSIC	SHARE OF TICKET SPLIT FOR 'LIOR' CONCERT	4974.00
EFT39175	09/10/2014	BEESWAX CREATIONS	CONSIGNMENT SUPPLIER - ZIG ZAG CULTURAL CENTRE - 01/09/14 -30/09/14	5.25
EFT39176	09/10/2014	TIERRA ECOLOGIA	CONSIGNMENT SUPPLIER - ZIG ZAG CULTURAL CENTRE - 01/09/14 -30/09/14	55.30
EFT39177	09/10/2014	MPK TREE SERVICES	TREE REMOVAL / BRANCH PRUNING AT VARIOUS LOCATIONS	4246.00
EFT39178	09/10/2014	VISSYART	CONSIGNMENT SUPPLIER - ZIG ZAG CULTURAL CENTRE - 01/09/14 -30/09/14	6.44
EFT39179	09/10/2014	OFF PEN PUBLISHING - BETH BAKER	CONSIGNMENT SUPPLIER - ZIG ZAG CULTURAL CENTRE - 01/09/14 -30/09/14	34.30
EFT39180	09/10/2014	STAN THE TYRE MAN (STAN'S TYRE SERVICE WA)	PLANT / VEHICLE PARTS	1699.50
EFT39181	09/10/2014	WOBBLYJULES INVESTMENTS FUND	SUPERANNUATION CONTRIBUTIONS	227.41
EFT39182	09/10/2014	NEXXIAL ECOLOGY PTY LTD	WEED CONTROL AT VARIOUS LOCATIONS	1980.00
EFT39183	09/10/2014	GRAHAM STIMSON	CONSIGNMENT SUPPLIER - ZIG ZAG CULTURAL CENTRE - 01/09/14 -30/09/14	85.40
EFT39184	09/10/2014	BALLIGART - HELEN LOCK	CONSIGNMENT SUPPLIER - ZIG ZAG CULTURAL CENTRE - 01/09/14 -30/09/14	36.75
EFT39185	09/10/2014	ALPHA MODELS	KEY BOND REFUND	50.00
EFT39186	09/10/2014	IMAGININGS LIFE IMAGES BY SUE	CONSIGNMENT SUPPLIER - ZIG ZAG CULTURAL CENTRE - 01/09/14 -30/09/14	9.45

Chq/EFT	Date	Name	Description	Amount
EFT39187	09/10/2014	AUSTRALIAN CATHOLIC SUPERANNUATION & RETIREMENT FUND (ACSRF)	SUPERANNUATION CONTRIBUTIONS	240.94
EFT39188	09/10/2014	ANDREA & STEPHEN JONES	RATES REFUND	341.35
EFT39189	09/10/2014	TREND NOMINEES PTY LTD	TRAM SHUTTLE TRANSPORTATION FOR WALK THE ZIG ZAG 2014	790.00
EFT39190	09/10/2014	DARLING RANGE CONNECT INC	PA HIRE FOR 'AGENTS OF CHANGE'	660.00
EFT39191	09/10/2014	WESTERN TECHNICAL SERVICES PTY LTD	SUPPLY AND INSTALLATION OF AIRCONDITIONING SPLIT SYSTEMS TO VARIOUS LOCATIONS	15993.45
EFT39192	09/10/2014	BRENDAS CLAY CRAFT	CONSIGNMENT SUPPLIER - ZIG ZAG CULTURAL CENTRE - 01/09/14 -30/09/14	8.40
EFT39193	09/10/2014	IRENE YOUNG	CONSIGNMENT SUPPLIER - ZIG ZAG CULTURAL CENTRE - 01/09/14 -30/09/14	8.40
EFT39194	09/10/2014	THE SULLIVAN SUPER FUND	SUPERANNUATION CONTRIBUTIONS	668.90
EFT39195	09/10/2014	JOSEPH RALPH	TECHNICAL SERVICES AT VARIOUS EVENTS	1139.00
EFT39196	09/10/2014	WAITAWHILE ART	CONSIGNMENT SUPPLIER - ZIG ZAG CULTURAL CENTRE - 01/09/14 -30/09/14	2.52
EFT39197	09/10/2014	RONALD PENDAL	TRAVEL COMMUNITY VISITORS SCHEME REFUND	88.00
EFT39198	09/10/2014	BELLA CASA DEVELOPMENTS	FOOTPATH DEPOSIT REFUND	1000.00
EFT39199	09/10/2014	DAVID PALMER (PALMER CONSTRUCTIONS & CONTRACTING PTY LTD)	FOOTPATH DEPOSIT REFUND	1000.00
EFT39200	09/10/2014	AUSTRALIAN FINANCIAL SECURITY AUTHORITY	VEHICLE CHECKS FOR ABANDONED VEHICLES	20.00
EFT39201	09/10/2014	THE LUCKY CHARM	SUPPLY AND DELIVERY OF MAGAZINES TO VARIOUS LOCATIONS	105.75
EFT39202	09/10/2014	NORMA MACDONALD	CONSIGNMENT SUPPLIER - ZIG ZAG CULTURAL CENTRE - 01/09/14 -30/09/14	16.10
EFT39203	09/10/2014	ELIZABETH (BETH) CRAIG	TRAVEL COMMUNITY VISITORS SCHEME REFUND	60.00
EFT39204	09/10/2014	PAWS AND CLAWS CAT CLUB	CLEANING FEE REFUND	138.00
EFT39205	09/10/2014	G ROSS SUPERANNUATION PTY LTD	SUPERANNUATION CONTRIBUTIONS	70.60
EFT39206	09/10/2014	AUSSIE SHEDS GROUP	PART PAYMENT - SUPPLY AND INSTALL ZINC SHED	2000.00

Chq/EFT	Date	Name	Description	Amount
EFT39207	09/10/2014	TIMBER INSIGHT PTY LTD	REGISTRATION FOR 2 STAFF TO ATTEND KEEP YOUR ROOF ON SEMINAR	154.00
EFT39208	09/10/2014	MG & P LENNON SUPERANNUATION FUND	SUPERANNUATION CONTRIBUTIONS	236.68
EFT39209	09/10/2014	KUSTOM ENGINEERING PTY LTD	REGISTRATION FOR 1 STAFF TO ATTEND DRAINS WORKSHOPS COURSE	1903.00
EFT39210	09/10/2014	SALLY NERI	HALL BOND REFUND	50.00
EFT39211	09/10/2014	JOYCE TASMA	FIBRE ARTISTS ACTIVITY FOR WALK THE ZIG ZAG 2014	500.00
EFT39212	09/10/2014	JANELLE SAUNDERSON	PARTY BOND REFUND	50.00
EFT39213	09/10/2014	JESSICA JUBB	CONSIGNMENT SUPPLIER - ZIG ZAG CULTURAL CENTRE - 01/09/14 -30/09/14	28.00
EFT39214	09/10/2014	TELUGU ASSOCIATION OF PERTH	REFUND FOR CANCELLED BOOKING	136.00
EFT39215	09/10/2014	KAYE BANNERMAN	REFUND OF VARIOUS COSTS	119.47
EFT39216	09/10/2014	STEPHEN J KUHAHEZ	BOND REFUND FOR THE USE OF THE SEMINAR ROOM AT THE ZIG ZAG CULTURAL CENTRE	400.00
EFT39217	09/10/2014	WESLEY G FORD (WES FORD)	RETURN OF ACCESSWAY BOND - WAPC 509-12-7 HUME ROAD HIGH WYCOMBE	10560.00
EFT39218		EFT PAYMENT CANCELLED		
EFT39219	09/10/2014	CATHERINE COUACAUD	KEY BOND REFUND	50.00
EFT39220	23/10/2014	HART SPORT	RECREATION CENTRE SUPPLIES	384.50
EFT39221	23/10/2014	STYLECORP CORPORATE WEAR	SUPPLY OF UNIFORM FOR VARIOUS STAFF MEMBERS	4501.62
EFT39222	23/10/2014	MOTORCHARGE - WRIGHT EXPRESS FUEL CARDS AUSTRALIA LTD	FUEL - PERIOD ENDING 15 OCTOBER 2014	5983.37
EFT39223	23/10/2014	PLE COMPUTERS	COMPUTER SUPPLIES / ACCESSORIES	98.00
EFT39224	23/10/2014	SHAWSETT TRAINING PTY LTD	REGISTRATION FOR FIRST AID TRAINING	1055.50
EFT39225	23/10/2014	SALMAT MEDIAFORCE PTY LTD	DISTRIBUTION OF FLYERS FOR EVENTS WITHIN THE SHIRE	1135.31
EFT39226	23/10/2014	NEVERFAIL SPRINGWATER LTD (KALA LIB)	BOTTLED WATER SUPPLIES / MAINTENANCE	59.10

Chq/EFT	Date	Name	Description	Amount
EFT39227	23/10/2014	NESTLE AUSTRALIA LTD (MUSASHI)	KIOSK SUPPLIES FOR HARTFIELD PARK RECREATION CENTRE	288.99
EFT39228	23/10/2014	JB HI-FI MIDLAND	VARIOUS ELECTRICAL SUPPLIES	308.85
EFT39229	23/10/2014	FIRE AND SAFETY WA	FIRE PROTECTION WEAR / SUPPLIES	3447.28
EFT39230	23/10/2014	INFORM CONNECTIONS PTY LTD	EQUIPMENT SUPPLIES FOR HARTFIELD PARK RECREATION CENTRE	330.00
EFT39231	23/10/2014	PAUL'S BUS COMPANY PTY LTD	SHUTTLE TRANSPORT FOR WALK THE ZIG ZAG 2014	5720.00
EFT39232	23/10/2014	CABCHARGE AUSTRALIA LIMITED	CABCHARGE FEES	6.00
EFT39233	23/10/2014	PICTON PRESS	PRINTING OF BROCHURES FOR VARIOUS EVENTS	1319.53
EFT39234	23/10/2014	MACQUARIE EQUIPMENT FINANCE PTY LTD	LEASE PAYMENTS FOR VARIOUS LOCATIONS	3028.31
EFT39235	23/10/2014	ASSETIC AUSTRALIA PTY LTD	CONSULTING SERVICES AND ADDITIONAL 5 USER LICENSES FOR MY DATA PREMIUM	23914.00
EFT39236	23/10/2014	TOP OF THE LADDER GUTTER CLEANING	GUTTER CLEANING SERVICES FOR VARIOUS LOCATIONS	6919.00
EFT39237	23/10/2014	PARAMOUNT SECURITY SERVICES	SECURITY FOR WALK THE ZIG ZAG 2014	2653.20
EFT39238	23/10/2014	VIP CARPET AND UPHOLSTERY CLEANING SERVICE	CARPET CLEANING AT VARIOUS LOCATIONS	590.00
EFT39239	23/10/2014	SITECH (WA) PTY LTD	ROAD SURVEYING EQUIPMENT SUPPLIES	168.30
EFT39240	23/10/2014	BIDVEST FOODSERVICE	GROCERIES FOR PETER ANDERTON CENTRE	1224.21
EFT39241	23/10/2014	TOTALLY WORKWEAR MIDLAND	SUPPLY OF PROTECTIVE CLOTHING	851.13
EFT39242	23/10/2014	CIRCUITWEST INC.	CIRCUITWEST MEMBERSHIP 2014 / 2015	249.80
EFT39243	23/10/2014	WATS MANAGEMENT PTY LTD T/A AUSTRAFFIC WA	SUPPLY TRAFFIC DATA FOR HALE ROAD, ADJACENT TONKIN HIGHWAY	792.00
EFT39244	23/10/2014	KRYSTAL'S KIDS PARTIES	FACE PAINTING & BALLOON TWISTING FOR BUSHFIRE AWARE EXPO 2014	800.00
EFT39245	23/10/2014	ALLAN MORTON	COUNCILLOR ALLOWANCE - 25/09/14 - 30/10/14	2520.20
EFT39246	23/10/2014	ANDREW CODE	TRAVEL COMMUNITY VISITORS SCHEME REFUND	52.50
EFT39247	23/10/2014	MARGIT ELSE ALTMANN	TRAVEL COMMUNITY VISITORS SCHEME REFUND	156.00
EFT39248	23/10/2014	CANDIDA GORDON	KEY BOND REFUND	50.00

Chq/EFT	Date	Name	Description	Amount
EFT39249	23/10/2014	SHIRLEY LILLIE GREEN	HALL AND KEY BOND REFUND	350.00
EFT39250	23/10/2014	MARGARET MARY TERESA CALHOUN	FOOTPATH DEPOSIT REFUND	1000.00
EFT39251	23/10/2014	STEVEN BENTLEY	SALE OF ARTWORK - SPRING IN THE HILLS EXHIBITION	280.00
EFT39252	23/10/2014	WA LOCAL GOVERNMENT SUPERANNUATION PLAN	SUPERANNUATION CONTRIBUTIONS	92210.43
EFT39253	23/10/2014	SHIRE OF KALAMUNDA STAFF SOCIAL CLUB	PAYROLL DEDUCTIONS	324.00
EFT39254	23/10/2014	CHILD SUPPORT AGENCY	PAYROLL DEDUCTIONS	633.07
EFT39255	23/10/2014	AUSTRALIA POST	POSTAL EXPENSES	6080.12
EFT39256	23/10/2014	BUNNINGS BUILDING SUPPLIES	HARDWARE SUPPLIES FOR VARIOUS LOCATIONS	3708.09
EFT39257	23/10/2014	COVS PARTS PTY LTD	PLANT / VEHICLE PARTS	838.47
EFT39258	23/10/2014	CROMMELINS MACHINERY	PLANT / VEHICLE PARTS	160.80
EFT39259	23/10/2014	KALAMUNDA AUTO ELECTRICS	PLANT / VEHICLE PARTS	2328.15
EFT39260	23/10/2014	KALAMUNDA TOYOTA	PLANT / VEHICLE PARTS	898.86
EFT39261	23/10/2014	WA LOCAL GOVERNMENT ASSOCIATION	REGISTRATION FOR STAFF TO ATTEND VARIOUS COURSES	2079.00
EFT39262	23/10/2014	MCLEODS BARRISTERS & SOLICITORS	LEGAL EXPENSES	6427.72
EFT39263	23/10/2014	MIDWASTE - TRANSPACIFIC CLEANAWAY PTY LTD	WASTE / RECYCLING SERVICES	7112.12
EFT39264	23/10/2014	SESCO SECURITY CO	SECURITY MONITORING SERVICES FOR VARIOUS LOCATIONS	137.50
EFT39265	23/10/2014	STATE LIBRARY OF W.A.	LOST AND DAMAGED BOOKS & 619 BETTER BEGINNINGS GIFT BOOKS	4060.10
EFT39266	23/10/2014	WA LIBRARY SUPPLIES PTY LTD	LIBRARY / OFFICE SUPPLIES	636.00
EFT39267	23/10/2014	WALKERS HARDWARE (MITRE 10)	HARDWARE SUPPLIES	499.64
EFT39268	23/10/2014	ECHO NEWSPAPER	ADVERTISING FOR VARIOUS JOBS / EVENTS	2590.50
EFT39269	23/10/2014	MCKAY EARTHMOVING PTY LTD	PLANT EQUIPMENT AND OPERATOR HIRE FOR VARIOUS LOCATIONS	10048.20

Chq/EFT	Date	Name	Description	Amount
EFT39270	23/10/2014	EASTERN METROPOLITAN REGIONAL COUNCIL	DOMESTIC / WASTE CHARGES - RED HILL TIP. REGIONAL DEVELOPMENT BUDGET CONTRIBUTION 2014/15. MATTRESS DISPOSAL FEES.	325538.34
EFT39271	23/10/2014	BORAL CONSTRUCTION MATERIALS GROUP	ROAD MATERIALS FOR VARIOUS LOCATIONS	1130.58
EFT39272	23/10/2014	A & S HILL	ELECTRICIAL REPAIRS / MAINTENANCE FOR VARIOUS LOCATIONS	23370.82
EFT39273	23/10/2014	OFFICE LINE GROUP PTY LTD	OFFICE FURNITURE SUPPLIES	138.60
EFT39274	23/10/2014	JASON SIGNMAKERS	SIGNAGE SUPPLIES	231.00
EFT39275	23/10/2014	3 VODAFONE HUTCHISON AUSTRALIA PTY LTD	COMMUNICATION EXPENSES	3017.98
EFT39276	23/10/2014	STATEWIDE BEARINGS	PLANT / VEHICLE PARTS	322.93
EFT39277	23/10/2014	FASTA COURIERS	COURIER FEES	448.90
EFT39278	23/10/2014	THE WATERSHED WATER SYSTEMS	RETICULATION PARTS FOR VARIOUS RESERVES	2740.89
EFT39279	23/10/2014	RAECO	STATIONERY / OFFICE SUPPLIES	355.85
EFT39280	23/10/2014	MCINTOSH & SON	PLANT / VEHICLE PARTS	2182.89
EFT39281	23/10/2014	SONIC HEALTHPLUS (KINETIC HEALTH GROUP LTD)	PREPLACEMENT MEDICALS / BASELINE HEARING TESTS	891.00
EFT39282	23/10/2014	SANDGROPER SEPTICS	SEPTIC / GREASE TANK CLEAN OUT SERVICES AT VARIOUS LOCATIONS	149.69
EFT39283	23/10/2014	MAJOR MOTORS PTY LTD	PLANT / VEHICLE PARTS	119.41
EFT39284	23/10/2014	ALSCO LINEN SERVICE	LINEN HIRE / LAUNDRY SERVICES	462.60
EFT39285	23/10/2014	BRADOCK PODIATRY SERVICES PTY LTD	PODIATRY SERVICES AT JACK HEALEY CENTRE	536.49
EFT39286	23/10/2014	DAYNITE TOWING SERVICE (WA) PTY LTD (FORMERLEY MOBITOW PTY LTD)	TOWING SERVICES	99.00
EFT39287	23/10/2014	LINDLEY CONTRACTING	PLUMBING REPAIRS / MAINTENANCE FOR VARIOUS LOCATIONS	7117.00
EFT39288	23/10/2014	CLEAN CLOTH COTTON TRADERS	PROTECTIVE SUPPLIES	202.79
EFT39289	23/10/2014	KALA BOB KATS PTY LTD	PLANT EQUIPMENT AND OPERATOR HIRE FOR VARIOUS LOCATIONS	2253.90
EFT39290	23/10/2014	DEPARTMENT OF PARKS & WILDLIFE	ANNUAL ALL PARK PASS	386.10

Chq/EFT	Date	Name	Description	Amount
EFT39291	23/10/2014	STEWART & HEATON CLOTHING CO PTY LTD	FIRE PROTECTION WEAR / SUPPLIES	1067.68
EFT39292	23/10/2014	LGIS WORKCARE SCHEME	LGIS WORKCARE INSURANCE 30/6/14 - 30/6/15 - SECOND INSTALLMENT	206584.69
EFT39293	23/10/2014	ACTIMED AUSTRALIA PTY LTD	MEDICAL SUPPLIES FOR PODIARTIST	420.95
EFT39294	23/10/2014	LGIS LIABILITY SCHEME	LGIS LIABILITY INSURANCE 30/6/14 - 30/9/15 - SECOND INSTALLMENT	174831.79
EFT39295	23/10/2014	GRONBEK SECURITY	SECURITY KEY SERVICES TO VARIOUS LOCATIONS	739.57
EFT39296	23/10/2014	GRIMES CONTRACTING PTY LTD	CONTRACTOR BUILDING MAINTENANCE FOR VARIOUS BUILDINGS	2222.87
EFT39297	23/10/2014	KENYON & COMPANY PTY LTD	PLANT / VEHICLE PARTS	354.20
EFT39298	23/10/2014	BGC ASPHALT	ROAD MATERIALS FOR VARIOUS LOCATIONS	1397.18
EFT39299	23/10/2014	CADSULT IRRIGATION CONSULTANTS	IRRIGATION TECHNOLOGY CONSULTANTS	2145.00
EFT39300	23/10/2014	WESTSIDE FIRE SERVICES	TESTING AND INSPECTION OF FIRE EQUIPMENT / SUPPLIES	104.50
EFT39301	23/10/2014	STAPLES AUSTRALIA PTY LTD(CORPORATE EXPRESS AUSTRALIA LTD)	STATIONERY / OFFICE SUPPLIES	2508.46
EFT39302	23/10/2014	KALAMUNDA STATE EMERGENCY SERVICE	REIMBURSEMENT - GOODS AND SERVICES	1987.60
EFT39303	23/10/2014	HILL TOP TROPHIES (MILPRO WA)	SUPPLY OF NAME BADGES	21.45
EFT39304	23/10/2014	FULTON HOGAN INDUSTRIES PTY LTD	ROAD MATERIALS FOR VARIOUS LOCATIONS	932.21
EFT39305	23/10/2014	JOHN GIARDINA	COUNCILLOR ALLOWANCE - 25/09/14 - 30/10/14	4005.77
EFT39306	23/10/2014	GEOFF STALLARD	COUNCILLOR ALLOWANCE - 25/09/14 - 30/10/14	2520.20
EFT39307	23/10/2014	FOODWORKS FRESH FORRESTFIELD	GROCERY SUPPLIES	1334.70
EFT39308	23/10/2014	WA LOCAL GOVERNMENT ASSOCIATION (ADVERTISING)	ADVERTISING FOR VARIOUS JOBS / EVENTS	23905.55
EFT39309	23/10/2014	KALAMUNDA & DISTRICTS JUNIOR FOOTBALL CLUB	KIDSPORT FUNDING FOR VARIOUS PLAYERS	2809.12
EFT39310	23/10/2014	MACDONALD JOHNSTON ENGINEERING	PLANT / VEHICLE PARTS	262.35
EFT39311	23/10/2014	LO-GO APPOINTMENTS	HIRE OF TEMPORARY STAFF FOR DEPOT / ADMIN	3872.88
EFT39312	23/10/2014	WORK CLOBBER (MIDLAND)	PROTECTIVE CLOTHING SUPPLIES	418.50

Chq/EFT	Date	Name	Description	Amount
EFT39313	23/10/2014	GREEN SKILLS (ECOJOBS)	LABOUR ASSISTANCE FOR TREE PLANTING	379.50
EFT39314	23/10/2014	J BLACKWOOD & SON LIMITED	PROTECTIVE WEAR / SUPPLIES	2164.13
EFT39315	23/10/2014	EASTERN HILLS SAWS AND MOWERS	PLANT / VEHICLE PARTS	1058.65
EFT39316	23/10/2014	AIR LIQUIDE WA PTY LTD	GAS BOTTLE FACILITY FEE	114.61
EFT39317	23/10/2014	LOVEGROVE TURF SERVICES	TURF MAINTENANCE / SERVICES AT VARIOUS LOCATIONS	1385.00
EFT39318	23/10/2014	KALAMUNDA & DISTRICTS HISTORICAL SOCIETY	ANNUAL CONTRIBUTION AS PER LEASE AGREEMENT	23571.00
EFT39319	23/10/2014	FORRESTFIELD PRIMARY SCHOOL	DONATION IN SUPPORT OF FORRESTFIELD PRIMARY SCHOOL KITCHEN OPENING AND BOND REFUND FOR THE USE OF THE GALLERY AT THE ZIG ZAG CULTURAL CENTRE	910.00
EFT39320	23/10/2014	CRABBS KALAMUNDA (IGA)	GROCERY SUPPLIES	387.27
EFT39321	23/10/2014	PICKERING BROOK PRIMARY SCHOOL	DONATION IN SUPPORT OF AFL GOAL POSTS	500.00
EFT39322	23/10/2014	KALAMUNDA DISTRICTS HOCKEY CLUB (INC)	KIDSPORT FUNDING FOR VARIOUS PLAYERS	200.00
EFT39323	23/10/2014	STAGE FX	TECHNICIAN SERVICES FOR VARIOUS EVENTS	620.00
EFT39324	23/10/2014	VENTURA HOMES PTY LTD	FOOTPATH DEPOSIT REFUND	1000.00
EFT39325	23/10/2014	DALE ALCOCK HOMES PTY LTD	FOOTPATH DEPOSIT REFUND	1000.00
EFT39326	23/10/2014	EDUCATIONAL ART SUPPLIES COMPANY	CRAFT SUPPLIES FOR LIBRARIES	72.38
EFT39327	23/10/2014	LITTLE LOADS	GARDEN / VERGE SUPPLIES FOR VARIOUS LOCATIONS	456.00
EFT39328	23/10/2014	KALAMUNDA CAROLS BY CANDLELIGHT INC	CONTRIBUTION TOWARDS KALAMUNDA CAROLS BY CANDLELIGHT - DECEMBER 2014	4244.00
EFT39329	23/10/2014	GEM CAMERA CLUB INC	BOND REFUND FOR THE USE OF THE GALLERY AT THE ZIG ZAG CULTURAL CENTRE	500.00
EFT39330	23/10/2014	LIONS CLUB OF KALAMUNDA	FOOD SUPPLIED TO STAFF AT WALK THE ZIG ZAG 2014	61.00
EFT39331	23/10/2014	WACKER NEUSON AUSTRALIA PTY LTD	PLANT / VEHICLE PARTS	1925.00
EFT39332	23/10/2014	GCS SERVICES	PLUMBING SERVICES TO VARIOUS LOCATIONS	1382.70
EFT39333	23/10/2014	LANDMARK OPERATIONS LTD	CHEMICALS & SUPPLIES	189.14

Chq/EFT	Date	Name	Description	Amount
EFT39334	23/10/2014	THE HONDA SHOP	PLANT / VEHICLE PARTS	2299.00
EFT39335	23/10/2014	ST JOHN AMBULANCE AUSTRALIA (WA) INC	FIRST AID POST FOR WALK THE ZIG ZAG 2014	283.12
EFT39336	23/10/2014	UNIVERSAL ENGINEERS SUPPLIES (UES)	PLANT / VEHICLE PARTS	992.18
EFT39337	23/10/2014	FINISHING TOUCH	BUS CLEANING / DETAILING	190.00
EFT39338	23/10/2014	COMMISSIONER OF POLICE	VOLUNTEER POLICE CHECKS AND FIREARMS LICENSE RENEWAL TILL 17/11/15	427.70
EFT39339	23/10/2014	HAWLEY'S BOBCAT SERVICE	PLANT EQUIPMENT AND OPERATOR HIRE FOR VARIOUS LOCATIONS	5852.00
EFT39340	23/10/2014	WILD SEASONS FLOWERS PTY LTD	FLOWER ARRANGEMENTS	88.00
EFT39341	23/10/2014	KALAMUNDA & DISTRICTS BASKETBALL ASSOCIATION INC	KIDSPORT FUNDING FOR VARIOUS PLAYERS	1320.00
EFT39342	23/10/2014	FORRESTFIELD NEWSPAPERS & MAGAZINES DELIVERY	NEWSPAPERS / MAGAZINES DELIVERIES FOR VARIOUS LOCATIONS	35.75
EFT39343	23/10/2014	TOTAL PACKAGING (WA) PTY LTD	SUPPLY OF DOG LITTER BAGS	1887.60
EFT39344	23/10/2014	AABEL LINE MARKING	LINE MARKING FOR VARIOUS LOCATIONS	671.61
EFT39345	23/10/2014	WA HINO SALES & SERVICE	PLANT / VEHICLE PARTS	411.97
EFT39346	23/10/2014	RURAL BUILDING COMPANY PTY LTD	FOOTPATH DEPOSIT REFUND	593.64
EFT39347	23/10/2014	DEPARTMENT OF FIRE AND EMERGENCY SERVICES (DFES)	50% COST SHARING FOR THE COMMUNITY FIRE MANAGER FOR THE PERIOD 27/06/14 - 25/09/14	17612.75
EFT39348	23/10/2014	ICON-SEPTECH	DRAINAGE SUPPLIES FOR VARIOUS LOCATIONS	4438.50
EFT39349	23/10/2014	DICK SMITH ELECTRONICS	ELECTRICAL SUPPLIES	238.40
EFT39350	23/10/2014	SOUTHERN SCENE PTY LTD	LIBRARY SUPPLIES	156.90
EFT39351	23/10/2014	C Y BOBCATS	PLANT EQUIPMENT AND OPERATOR HIRE FOR VARIOUS LOCATIONS	2928.75
EFT39352	23/10/2014	IAN JUSTIN WHITTEN	COUNCILLOR ALLOWANCE - 25/09/14 - 30/10/14	2520.20
EFT39353	23/10/2014	THE FARM SHOP (WA) PTY LTD	GARDEN / RESERVE SUPPLIES	1584.00
EFT39354	23/10/2014	WELLINGTON SURPLUS STORES	SAFETY EQUIPMENT	864.63
EFT39355	23/10/2014	KALAMUNDA AND LESMURDIE LITTLE ATHLETICS CLUB	KIDSPORT FUNDING FOR VARIOUS PLAYERS	150.00

Chq/EFT	Date	Name	Description	Amount
EFT39356	23/10/2014	AMEREX FIRE (WA) (E FIRE AND SAFETY)	FIRE EQUIPMENT MAINTENANCE FOR VARIOUS LOCATIONS	4895.55
EFT39357	23/10/2014	B & J CATALANO PTY LTD	ROAD MATERIALS FOR VARIOUS LOCATIONS	5085.25
EFT39358	23/10/2014	HILL TOP GROUP PTY	CONTRACTOR BUILDING MAINTENANCE FOR VARIOUS BUILDINGS	9863.11
EFT39359	23/10/2014	KEVREK (AUSTRALIA) PTY LTD	PLANT / VEHICLE PARTS	384.89
EFT39360	23/10/2014	PETER WATSON	TRAVEL COMMUNITY VISITORS SCHEME REFUND	45.00
EFT39361	23/10/2014	LGIS PROPERTY	LGIS PROPERTY INSURANCE 30/6/14 - 30/6/15 - 2ND INSTALLMENT	100036.56
EFT39362	23/10/2014	IRRIGATION AUSTRALIA LTD	REGISTRATION FOR 1 STAFF TO ATTEND IRRIGATION EFFICIENCY COURSE	850.00
EFT39363	23/10/2014	TRILOGY SERVICING PTY LTD	AIRCONDITIONING MAINTENANCE / REPAIRS FOR VARIOUS LOCATIONS	1919.50
EFT39364	23/10/2014	LOCAL GOVERNMENT PLANNERS ASSOCIATION	REGISTRATION FOR 1 STAFF TO ATTEND THE NORTH EAST BUS TOUR	50.00
EFT39365	23/10/2014	QUICK CORPORATE AUST PTY LTD	STATIONERY / OFFICE SUPPLIES	2847.29
EFT39366	23/10/2014	WEST AUSTRALIAN NEWSPAPERS HOLDINGS LTD	ADVERTISING WALK THE ZIG ZAG 2014	220.40
EFT39367	23/10/2014	SUSAN BILICH	COUNCILLOR ALLOWANCE - 25/09/14 - 30/10/14	9205.29
EFT39368	23/10/2014	MCDOWALL AFFLECK PTY LTD	ENGINEERING SERVICES FOR THE SCOTT RESERVE VIEWING PLATFORM, HIGH WYCOMBE	440.00
EFT39369	23/10/2014	COMMUNITY NEWSPAPER GROUP LTD	ADVERTISING FOR VARIOUS JOBS AND EVENTS	3162.76
EFT39370	23/10/2014	ZIG ZAG COMMUNITY ARTS INC	CONTRIBUTION TOWARDS ZIG ZAG FESTIVAL 2014	31827.00
EFT39371	23/10/2014	PERRY ENVIRONMENTAL CONTRACTING	WEED CONTROL AT VARIOUS LOCATIONS	6268.00
EFT39372	23/10/2014	CAMP WATTLE GROVE - ORANGE GROVE KESWICK CONVENTION INC	GAMES TRAILER BOND REFUND FOR HARTFIELD PARK RECREATION CENTRE	200.00
EFT39373	23/10/2014	DRIVE STRAIGHT	PLANT / VEHICLE PARTS	198.00
EFT39374	23/10/2014	BIG W (AR W1.C3.U.07)	BOOKS AND DVD'S FOR FORRESTFIELD LIBRARY	238.90

Chq/EFT	Date	Name	Description	Amount
EFT39375	23/10/2014	MAIN ROADS (WA)	REFERRAL OF GRANTS - 2013/14 - PROJECT 21108668 - KALAMUNDA ROAD - PROJECT 21108669 RAILWAY ROAD	71404.30
EFT39376	23/10/2014	DUN & BRADSTREET (AUSTRALIA) PTY LTD	DEBT COLLECTION FEES FOR RATES AND LIBRARIES	361.32
EFT39377	23/10/2014	SAI GLOBAL LTD	SUPPLY OF AUSTRALIAN STANDARDS	16.90
EFT39378	23/10/2014	BRAJKOVICH DEMOLITION & SALVAGE (WA) PTY LTD	DEMOLITION OF HOUSE AT 36 COLLINS ROAD AS PER THE ASSET RATIONALISATION PROGRAM (2014-15)	20900.00
EFT39379	23/10/2014	FOOD TECHNOLOGY SERVICES PTY LTD	HIRE OF TEMPORARY STAFF FOR HEALTH DEPARTMENT	451.00
EFT39380	23/10/2014	ATI-MIRAGE TRAINING SOLUTIONS	REGISTRATION FOR 2 STAFF TO ATTEND VARIOUS COURSES	1016.97
EFT39381	23/10/2014	G FORCE PRINTING	SUPPLY OF PRINTED STATIONERY STOCK	1429.01
EFT39382	23/10/2014	T-QUIP	PLANT / VEHICLE PARTS	30.65
EFT39383	23/10/2014	STAMP - IT RUBBER STAMPS	OFFICE SUPPLIES	299.18
EFT39384	23/10/2014	HOSECO	PLANT / VEHICLE PARTS	32.25
EFT39385	23/10/2014	ABAXA (WH LOCATION SERVICES)	SUPPLY UNDERGROUND SERVICE LOCATIONS AT VARIOUS LOCATIONS	1971.13
EFT39386	23/10/2014	HILLS GOURMET	CATERING SUPPLIES	13.32
EFT39387	23/10/2014	DIRECT TRADES SUPPLY PTY LTD	HARDWARE SUPPLIES	1788.30
EFT39388	23/10/2014	GEMMILL HOMES	FOOTPATH DEPOSIT REFUND	1000.00
EFT39389	23/10/2014	MAHMADHANIEF HASSAN	FOOTPATH DEPOSIT REFUND	2000.00
EFT39390	23/10/2014	GREENWAY ENTERPRISES	GARDEN / RESERVE SUPPLIES	605.77
EFT39391	23/10/2014	MARGARET THOMAS	COUNCILLOR ALLOWANCE - 25/09/14 - 30/10/14	2520.20
EFT39392	23/10/2014	OFFICEWORKS SUPERSTORES PTY LTD	OFFICE SUPPLIES / STATIONARY	1032.00
EFT39393	23/10/2014	WESTRAC PTY LTD	PLANT / VEHICLE PARTS	335.95
EFT39394	23/10/2014	NINA ROSE	FACEPAINTERS FOR WALK THE ZIG ZAG 2014	900.00
EFT39395	23/10/2014	CABLE LOCATES & CONSULTING	LOCATION SERVICES FOR VARIOUS AREAS	23035.10
EFT39396	23/10/2014	SIGN-A -RAMA	MAGNETIC SIGNAGE SUPPLIES	440.00

Chq/EFT	Date	Name	Description	Amount
EFT39397	23/10/2014	PORTER CONSULTING ENGINEERS	SURVEY/DESIGN FOR HALE ROAD WIDENING PROJECT	6622.00
EFT39398	23/10/2014	BGC CEMENT BAGGED PRODUCTS	ROAD MATERIALS SUPPLIES	780.30
EFT39399	23/10/2014	INSIGHT CCS PTY LTD	AFTER HOURS ANSWERING SERVICES - AUGUST & SEPTEMBER 2014	4495.48
EFT39400	23/10/2014	PHIL & DANIELLE RUST	HALL AND KEY BOND REFUND	350.00
EFT39401	23/10/2014	NOREEN TOWNSEND	COUNCILLOR ALLOWANCE - 25/09/14 - 30/10/14	2520.20
EFT39402	23/10/2014	MODERN TEACHING AIDS	CHILDREN ACTIVITY SUPPLIES	318.73
EFT39403	23/10/2014	AHMAD BAZLEE BIN MAT ZAIN & SALINA BINTI ABDUL SHUKOR	HALL BOND REFUND	500.00
EFT39404	23/10/2014	PHIL PROSSER	CROSSOVER CONTRIBUTION	400.00
EFT39405	23/10/2014	FRANK LINDSEY	COUNCILLOR ALLOWANCE - 25/09/14 - 30/10/14	2520.20
EFT39406	23/10/2014	KALMAR PTY LTD	BUILDING APPLICATION FEE REFUND	147.00
EFT39407	23/10/2014	SIMON DI ROSSO	COUNCILLOR ALLOWANCE - 25/09/14 - 30/10/14	2520.20
EFT39408	23/10/2014	G.D.CHARLTON	PODIATRY SERVICES AT JACK HEALEY CENTRE	1625.67
EFT39409	23/10/2014	WEBSITE WEED & PEST PTY LTD	WEED CONTROL AT VARIOUS LOCATIONS	7920.00
EFT39410	23/10/2014	POS DISPLAYS PTY LTD	OFFICE EQUIPMENT / SUPPLIES	519.71
EFT39411	23/10/2014	SECURE TRAFFIC	TRAFFIC MANAGEMENT FOR VARIOUS LOCATIONS	9862.05
EFT39412	23/10/2014	MEREDITH HIGGINS	PERFORMANCE FOR WALK THE ZIG ZAG 2014	400.00
EFT39413	23/10/2014	JACKSON MCDONALD LAWYERS	LEGAL EXPENSES	4539.30
EFT39414	23/10/2014	EASIFLEET MANAGEMENT	STAFF CONTRIBUTIONS TO NOVATED LEASES	9479.96
EFT39415	23/10/2014	HUMES	DRAINAGE SUPPLIES FOR VARIOUS LOCATIONS	8564.71
EFT39416	23/10/2014	BOYA EQUIPMENT PTY LTD	PLANT / VEHICLE PARTS	429.57
EFT39417	23/10/2014	AUSTRALIAN SUPERANNUATION	SUPERANNUATION CONTRIBUTIONS	1254.73
EFT39418	23/10/2014	ROAD SIGNS AUSTRALIA (ALLPACK SIGNS)	TRAFFIC PROTECTION PRODUCTS / SIGNAGE	3095.40
EFT39419	23/10/2014	MULTILEC ENGINEERING	QUARTERLY SERVICING & TESTING OF LIFTS	808.50
EFT39420	23/10/2014	MATTHEW GEORGE COOPER	CROSSOVER CONTRIBUTION	800.00
EFT39421	23/10/2014	TERESA MILLER	TRAVEL COMMUNITY VISITORS SCHEME REFUND	52.50
EFT39422	23/10/2014	ROSE SMART	MAINTAIN ROSE BEDS AT VARIOUS LOCATIONS	740.50

Chq/EFT	Date	Name	Description	Amount
EFT39423	23/10/2014	ANDREW WADDELL	COUNCILLOR ALLOWANCE - 25/09/14 - 30/10/14	2520.20
EFT39424	23/10/2014	PETER TUCATS SUPERANNUATION FUND	SUPERANNUATION CONTRIBUTIONS	263.63
EFT39425	23/10/2014	DRAINFLOW SERVICES PTY LTD	CLEANING / MAINTAINING STORM WATER DRAINS	14679.50
EFT39426	23/10/2014	NEVERFAIL SPRINGWATER LTD (PETER ANDERTON CEN)	BOTTLED WATER SUPPLIES / MAINTENANCE	77.75
EFT39427	23/10/2014	FUN AIRBRUSH TATTOOS	AIR BRUSH TATTOO ENTERTAINMENT FOR WALK THE ZIG ZAG 2014	550.00
EFT39428	23/10/2014	BEVERLEY DUFF	TRAVEL COMMUNITY VISITORS SCHEME REFUND	52.50
EFT39429	23/10/2014	NEVERFAIL SPRINGWATER LTD (ZZCC)	BOTTLED WATER SUPPLIES / MAINTENANCE	26.85
EFT39430	23/10/2014	OXFAM AUSTRALIA	KEY BOND REFUND	50.00
EFT39431	23/10/2014	BRIKMAKERS	SUPPLY OF BRICKS	1350.36
EFT39432	23/10/2014	DYLAN O'CONNOR	COUNCILLOR ALLOWANCE - 25/09/14 - 30/10/14	2520.20
EFT39433	23/10/2014	LIBERTY OIL WESTERN AUSTRALIA PTY LTD	SUPPLY OF FUEL	22721.12
EFT39434	23/10/2014	PH CONCRETE (WA) PTY LTD	FOOTPATH MAINTENANCE / REPAIRS FOR VARIOUS LOCATIONS	37141.67
EFT39435	23/10/2014	HAMMOND LEGAL	LEGAL EXPENSES	12690.67
EFT39436	23/10/2014	AVELING HOMES	FOOTPATH DEPOSIT REFUND	2000.00
EFT39437	23/10/2014	SAFETY BARRIERS WA PTY LTD	SUPPLY AND INSTALL CURVED GUARD RAIL AT HALE ROAD FORRESTFIELD	5005.00
EFT39438	23/10/2014	SOROPTIMIST INTERNATIONAL OF HELENA	BOND REFUND FOR THE USE OF THE SEMINAR ROOM AT THE ZIG ZAG CULTURAL CENTRE	300.00
EFT39439	23/10/2014	GUNDRY'S CARPET CHOICE	SUPPLY AND INSTAL FLOOR COVERINGS AT VARIOUS LOCATIONS	4561.00
EFT39440	23/10/2014	DANTERR AGENCIES	PLANT / VEHICLE PARTS	2860.00
EFT39441	23/10/2014	KOTT GUNNING LAWYERS	LEGAL EXPESNES	322.96
EFT39442	23/10/2014	FONZ'S BOBCAT & TRUCK HIRE	PLANT EQUIPMENT AND OPERATOR HIRE FOR VARIOUS LOCATIONS	7680.55
EFT39443	23/10/2014	ARMADILLO GROUP PTY LTD	PLANT / VEHICLE PARTS	3777.71

Chq/EFT	Date	Name	Description	Amount
EFT39444	23/10/2014	BEAVER TREE SERVICES	TREE REMOVAL / PRUNING FOR VARIOUS LOCATIONS	1739.65
EFT39445	23/10/2014	VISION SUPER PTY LTD	SUPERANNUATION CONTRIBUTIONS	2010.94
EFT39446	23/10/2014	ACCESS OFFICE INDUSTRIES	LIBRARY SUPPLIES	1192.40
EFT39447	23/10/2014	OFFICINO	OFFICE CHAIRS FOR KALAMUNDA COMMUNITY CARE	429.00
EFT39448	23/10/2014	FIRE 4 HIRE	VERGE / RESERVE MAINTENANCE AT VARIOUS LOCATIONS	3876.00
EFT39449	23/10/2014	FUJI XEROX AUSTRALIA PTY LTD	PHOTOCOPYING CHARGES	2042.82
EFT39450	23/10/2014	DRUM PRINT & PUBLICATIONS	PRINTING OF MEMBERSHIP PADS FOR HARTFIELD PARK RECREATION CENTRE	507.50
EFT39451	23/10/2014	EAE HOLDINGS P/L T/A STANLEE WA	CATERING / KITCHEN SUPPLIES	82.50
EFT39452	23/10/2014	HARE & FORBES PTY LTD	PLANT / VEHICLE PARTS	168.90
EFT39453	23/10/2014	TANKS FOR HIRE	WATER TANKS FOR WALK THE ZIG ZAG 2014	499.40
EFT39454	23/10/2014	EDWINA FORWARD ENGRAVING	2 PLAQUES FOR COMMEMORATIVE TREE PLANTING	71.50
EFT39455	23/10/2014	STRATEGEN ENVIRONMENTAL CONSULTANTS	PROFESSIONAL SERVICES - WILKINS ROAD - ADDITIONAL VARIATION	3025.00
EFT39456	23/10/2014	RHONDA HARDY	REFUND OF EMPLOYMENT CONTRACT ALLOWANCE	347.00
EFT39457	23/10/2014	ROBERT EMERY	COUNCILLOR ALLOWANCE - 25/09/14 - 30/10/14	2520.20
EFT39458	23/10/2014	POWA INSTITUTE	FACILITATION OF 3 SPECIAL PROJECT WORK TEAMS IN ACCORDANCE WITH THE KALAMUNDA GROW PROGRAM AND EOI 1410	2695.84
EFT39459	23/10/2014	EYEZON PTY LTD (WHAT'S ON)	ADVERTISING OF VARIOUS EVENTS	744.00
EFT39460	23/10/2014	RISK MANAGEMENT TECHNOLOGIES PTY LTD	CHEM ALERT RENEWAL	5195.30
EFT39461	23/10/2014	ORORA LTD	COLLECTION OF CARDBOARD FROM WALLISTON TRANSFER STATION	275.00
EFT39462	23/10/2014	SAFE T CARD AUSTRALIA PTY LTD	MONTHLY MONITORING CHARGES FOR VARIOUS LOCATIONS	99.00
EFT39463	23/10/2014	EAMON O'BRIEN	PART DOG REGISTRATION REFUND	19.00
EFT39464	23/10/2014	DAIMLER TRUCKS PERTH	PLANT/VEHICLE PARTS	1503.27

Chq/EFT	Date	Name	Description	Amount
EFT39465	23/10/2014	FOXTEL	MONTHLY SUBSCRIPTION FEE RECREATION CENTRE	205.00
EFT39466	23/10/2014	HANDS-ON INFECTION CONTROL	HEPATITIS VACCINATIONS FOR VARIOUS STAFF	270.61
EFT39467	23/10/2014	FORRESTFIELD FLAMES NETBALL CLUB	KIDSPORT FUNDING FOR VARIOUS PLAYERS	1000.00
EFT39468	23/10/2014	REDCLIFFE JUNIOR FOOTBALL CLUB	KIDSPORT FUNDING FOR VARIOUS PLAYERS	195.00
EFT39469	23/10/2014	MPJ (WA) PTY LTD	SUPERANNUATION CONTRIBUTIONS	535.50
EFT39470	23/10/2014	ROCKWATER PTY LTD	RESPONSE TO THE DEPARTMENT OF WATERS LICENCE AMENDMENT, PRINCIPAL HYDROGEOLOGIST	1650.00
EFT39471	23/10/2014	PUBLIC TRANSPORT AUTHORITY OF WA	HALL AND KEY BOND REFUND	355.00
EFT39472	23/10/2014	EXECUTIVE MEDIA PTY LTD	ADVERTISING - CARAVANNING AUSTRALIA SUMMER 2014/15	350.00
EFT39473	23/10/2014	TOTAL GREEN RECYCLING	RECYCLING OF ELECTRICAL APPLIANCES E-WASTE	2221.12
EFT39474	23/10/2014	DMC CLEANING	CLEANING SERVICES FOR VARIOUS LOCATIONS	53697.88
EFT39475	23/10/2014	KALAMUNDA RANGERS INCORPORATED	KIDSPORT FUNDING FOR VARIOUS PLAYERS	960.00
EFT39476	23/10/2014	CUROST MILK SUPPLY	MILK SUPPLY FOR ADMINISTRATION CENTRE AND DEPOT	355.32
EFT39477	23/10/2014	ELAN ENERGY MANAGEMENT	COLLECTION AND DISPOSAL OF TYRES	777.76
EFT39478	23/10/2014	DFP RECRUITMENT SERVICES PTY LTD	HIRE OF TEMPORARY STAFF	2123.13
EFT39479	23/10/2014	NATURAL AREA MANAGEMENT & SERVICES	SUPPLY OF PLANTS FOR UPPER LESMURDIE FALLS	878.35
EFT39480	23/10/2014	KEWDALE LITTLE ATHLETICS CLUB	KIDSPORT FUNDING FOR VARIOUS PLAYERS	150.00
EFT39481	23/10/2014	RTK NETWEST	SUBSCRIPTION FOR 1/11/2014 TO 31/10/2015	4400.00
EFT39482	23/10/2014	NEIL ELLIOTT	SALE OF ARTWORK - MUNDARING OPEN STUDIO EXHIBITION	1820.00
EFT39483	23/10/2014	MPK TREE SERVICES	TREE REMOVAL / BRANCH PRUNING AT VARIOUS LOCATIONS	13098.80
EFT39484	23/10/2014	TURFWORKS WA PTY LTD	RESERVE MOWING AT VARIOUS LOCATIONS	9526.46
EFT39485	23/10/2014	REBELS NETBALL CLUB	KIDSPORT FUNDING FOR VARIOUS PLAYERS	200.00
EFT39486	23/10/2014	A1 TROJAN PEST CONTROL	PEST CONTROL SERVICES FOR VARIOUS LOCATIONS	2246.00
EFT39487	23/10/2014	NEVERFAIL SPRINGWATER LTD (ADMIN OFFICE)	BOTTLED WATER SUPPLIES / MAINTENANCE	52.45

Chq/EFT	Date	Name	Description	Amount
EFT39488	23/10/2014	TALIS CONSULTANTS	KEY BOND REFUND	50.00
EFT39489	23/10/2014	STAN THE TYRE MAN (STAN'S TYRE SERVICE WA)	PLANT / VEHICLE PARTS	1507.00
EFT39490	23/10/2014	WOBBLYJULES INVESTMENTS FUND	SUPERANNUATION CONTRIBUTIONS	227.41
EFT39491	23/10/2014	HIT PRODUCTIONS PTY LTD	1ST INSTALLMENT OF GUARANTEE FOR BOMBSHELLS 22 OCT (IN LIEU OF CANCELLED CARMEN SESSION)	2200.00
EFT39492	23/10/2014	ENVIRO SWEEP	PROVISION OF FOOTPATH/CARPARK SWEEPING SERVICES	18092.26
EFT39493	23/10/2014	PERTH WASTE PTY LTD	DOMESTIC / RECYCLING RUBBISH SERVICES & BIN CHARGES	317618.97
EFT39494	23/10/2014	FORT KNOX RECORDS MANAGEMENT	SECONDARY STORAGE AND DESTRUCTION OF RECORDS	594.77
EFT39495	23/10/2014	ASHDENE MANUFACTURING PTY LTD	ASSORTED MERCHANDISE FOR THE ZIG ZAG CULTURAL CENTRE GIFT SHOP	435.31
EFT39496	23/10/2014	AUSTRALIAN CATHOLIC SUPERANNUATION & RETIREMENT FUND (ACSRF)	SUPERANNUATION CONTRIBUTIONS	240.94
EFT39497	23/10/2014	SHERWOOD FLOORING PTY LTD	FLOOR SANDING AND RECOATING AT VARIOUS LOCATIONS	10549.00
EFT39498	23/10/2014	ANGELA GILES	TRAVEL COMMUNITY VISITORS SCHEME REFUND	72.00
EFT39499	23/10/2014	JANETTE WOODLAND	TRAVEL COMMUNITY VISITORS SCHEME REFUND	37.50
EFT39500	23/10/2014	NICOLE FENWICK PHOTOGRAPHY	SALE OF ARTWORK - SPRING IN THE HILLS EXHIBITION	350.00
EFT39501	23/10/2014	WEST COAST PRODUCTION SERVICES	CONSULTING SERVICES FOR THE PRODUCTION OF A FILM LOCATION PACKAGE FOR THE SHIRE	5500.00
EFT39502	23/10/2014	TREND NOMINEES PTY LTD	TRAM FOR TRANSPORTATION OF FILM INDUSTRY PROFESSIONALS ON FILM KALAMUNDA FAMILIARISATION 17 OCT 2014	990.00

Chq/EFT	Date	Name	Description	Amount
EFT39503	23/10/2014	PHILIP JOHN WILSON	PERFORMANCE FOR MORNING MUSIC 'GEORGE FORMBY & PALS'	150.00
EFT39504	23/10/2014	THE SULLIVAN SUPER FUND	SUPERANNUATION CONTRIBUTIONS	668.90
EFT39505	23/10/2014	PAUL AND KAYE MORO	SALE OF ARTWORK - OPEN STUDIO POP UP EXHIBITION	210.00
EFT39506	23/10/2014	FRIDGAIR INDUSTRIES PTY LTD	REPAIRS / MAINTENANCE OF FRIDGE / FREEZER AT DAY CENTRE	411.62
EFT39507	23/10/2014	DAYTONE PRINTING PTY LTD	PRINTING OF BROCHURES / INVITES FOR VARIOUS LOCATIONS	3686.55
EFT39508	23/10/2014	ECOCYCLE AUSTRALIA PTY LTD	RECYCLING OF FLURO TUBES AND GLOBES	632.13
EFT39509	23/10/2014	MR & MRS G SUN	PART DOG REGISTRATION REFUND	77.50
EFT39510	23/10/2014	8TH PERTH (MUNDARING) COMPANY OF THE GIRLS BRIGADE	KIDSPORT FUNDING FOR VARIOUS PLAYERS	100.00
EFT39511	23/10/2014	DAVIDSON TRAHAIRE CORPSYCH	EMPLOYEE ASSITANCE PROGRAMME	1012.00
EFT39512	23/10/2014	WEST TIP WASTE CONTROL PTY LTD	COLLECTION AND RETURN OF HOOKLIFT BINS FROM WALLISTON TRANSFER STATION	25831.58
EFT39513	23/10/2014	KELLY CAMPBELL	HALL AND KEY BOND REFUND	750.00
EFT39514	23/10/2014	URBANECO GARDENS	HOME MAINTENANCE SERVICES	3525.00
EFT39515	23/10/2014	MOKOH DESIGN	MERCHANDISE FOR RE-SALE IN THE ZIG ZAG CULTURAL CENTRE GIFT SHOP	723.60
EFT39516	23/10/2014	GLENTHORNE TRAILERS	SUPPLY OF ONE LICENCED BOX TRAILER WITH CAGE	4180.00
EFT39517	23/10/2014	MICHAEL BUZZA ACADEMY OF TAXIDERMRY	TAXIDERMRY OF SOUTHERN BROWN BANDICOOT	1800.00
EFT39518	23/10/2014	JULIE RODWELL-BURGERS	KEY BOND REFUND	50.00
EFT39519	23/10/2014	TOTALLY WORKWEAR BELMONT	PROTECTIVE WEAR / SUPPLIES	105.90
EFT39520	23/10/2014	WKC CADASTRAL & LAND SERVICES	BOUNDARY RE-ESTABLISHMENT SURVEY OF VARIOUS LOCATIONS	2420.00

Chq/EFT	Date	Name	Description	Amount
EFT39521	23/10/2014	AGE DEVELOPMENTS PTY LTD	CONDUCT CCTV CAMERA INSPECTION OF THE EXISTING HARTFIELD PARK LAKES BORE WHICH HAS BEEN IDENTIFIED AS THE INJECTION BORE FOR THE HARTFIELD PARK WATER HARVESTING PROJECT	1100.00
EFT39522	23/10/2014	WORKPLACE ACCESS & SAFETY	HEIGHT SAFETY AUDIT REPORT FOR KALAMUNDA PERFORMING ARTS CENTRE	1650.00
EFT39523	23/10/2014	APOLLO BOOKS WA	LIBRARY SUPPLIES	1229.42
EFT39524	23/10/2014	SPIDER WASTE COLLECTION SERVICES PTY LTD	MATTRESS REMOVAL FROM TRANSFER STATION	1817.20
EFT39525	23/10/2014	G ROSS SUPERANNUATION PTY LTD	SUPERANNUATION CONTRIBUTIONS	75.26
EFT39526	23/10/2014	ALICIA NGUYEN	YOUTH ARTS FESTIVAL 2014 - JUDGES AWARD 15-25 YEARS	250.00
EFT39527	23/10/2014	KALAMUNDA MUSIC ACADEMY	PERFORMANCE AND CHILDRENS ACTIVITY WALK THE ZIG ZAG 2014	800.00
EFT39528	23/10/2014	MG & P LENNON SUPERANNUATION FUND	SUPERANNUATION CONTRIBUTIONS	262.98
EFT39529	23/10/2014	DEPARTMENT OF LOCAL GOVERNMENT AND COMMUNITIES	METROPOLITAN LOCAL GOVERNMENT REFORM - ROUND 1 - UNUSED GRANT RETURN	675.40
EFT39530	23/10/2014	1ST MIDLAND SCOUT GROUP	KIDSPORT FUNDING FOR VARIOUS PLAYERS	50.00
EFT39531	23/10/2014	BIRD AND FISH PLACE	SUPPLY OF WATER FALL & FISH POND, FILTERS PUMPS AND FITTINGS AT PETER ANDERTON CENTRE	5407.00
EFT39532	23/10/2014	GRAEME JOHNSON	TECHNICAL SERVICES FOR MAJESTIQUE DANCE	593.30
EFT39533	23/10/2014	TANMOY NATH	KEY BOND REFUND	50.00
EFT39534	23/10/2014	PHILIP ELLIOTT	FOOTPATH DEPOSIT REFUND	1000.00
EFT39535	23/10/2014	TERESA ALDRED	HALL AND KEY BOND REFUND	455.00
EFT39536	23/10/2014	DAVID ROW	HALL AND KEY BOND REFUND	350.00
EFT39537	23/10/2014	ASSUNTA WAMBECK	KEY BOND REFUND	50.00
68100	06/10/2014	DARRYL BUCKETT	RATES REFUND	603.58
68101	08/10/2014	HOSPITAL BENEFIT FUND OF WA	PAYROLL DEDUCTIONS	377.35
68102	08/10/2014	AUSTRALIAN SERVICES UNION	PAYROLL DEDUCTIONS	225.90
68103	08/10/2014	MUNICIPAL EMPLOYEES UNION	PAYROLL DEDUCTIONS	582.00

Chq/EFT	Date	Name	Description	Amount
68104	08/10/2014	TELSTRA CORPORATION	TELEPHONE EXPENSES	34683.95
68105	08/10/2014	WATER CORPORATION	WATER USE AND SERVICE CHARGE FEES	3803.10
68106	08/10/2014	BCITF	LEVY FEE - SEPTEMBER 2014	11802.26
68107	08/10/2014	SYNERGY	POWER CHARGES	30221.10
68108	08/10/2014	DIRECTOR OF LICENSING SERVICES	LOCAL AUTHORITY SERIES NUMBER PLATES	200.00
68109	08/10/2014	BUILDING COMMISSION	BUILDING LEVY - SEPTEMBER 2014	10253.77
68110	08/10/2014	AUSTRALIAN INSTITUTE OF BUILDING SURVEYORS WA CH	REGISTRATION FOR 1 STAFF TO ATTEND AIBS STATE CONFERENCE 2014	1080.00
68111	08/10/2014	CASH - KALAMUNDA LIBRARY	PETTY CASH REIMBURSEMENT	200.15
68112	08/10/2014	CASH - FORRESTFIELD LIBRARY	PETTY CASH REIMBURSEMENT	104.11
68113	08/10/2014	CASH - HARTFIELD PARK	PETTY CASH REIMBURSEMENT	192.20
68114	08/10/2014	WESTSCHEME SUPERANNUATION	SUPERANNUATION CONTRIBUTIONS	461.27
68115	08/10/2014	REST SUPERANNUATION	SUPERANNUATION CONTRIBUTIONS	1768.50
68116	08/10/2014	AMP RETIREMENT SAVINGS ACCOUNT	SUPERANNUATION CONTRIBUTIONS	304.74
68117	08/10/2014	CBUS SUPERANNUATION	SUPERANNUATION CONTRIBUTIONS	210.22
68118	08/10/2014	COGNET NOMINEES PTY LTD ACF MAP SUPER FUND	SUPERANNUATION CONTRIBUTIONS	105.90
68119	08/10/2014	COLONIAL 1ST STATE SUPERANNUATION	SUPERANNUATION CONTRIBUTIONS	1030.87
68120	08/10/2014	HESTA SUPER FUND	SUPERANNUATION CONTRIBUTIONS	911.85
68121	08/10/2014	AMPLIFE LIMITED	SUPERANNUATION CONTRIBUTIONS	121.89
68122	08/10/2014	CASH - MEALS ON WHEELS	PETTY CASH REIMBURSEMENT	379.00
68123	08/10/2014	CASH - KALAMUNDA HACC	PETTY CASH REIMBURSEMENT	684.25
68124	08/10/2014	ANZ SUPER ADVANTAGE	SUPERANNUATION CONTRIBUTIONS	216.39
68125	08/10/2014	AMP SUPER LEADER	SUPERANNUATION CONTRIBUTIONS	124.14
68126	08/10/2014	CASH - HIGH WYCOMBE LIBRARY	PETTY CASH REIMBURSEMENT	105.44
68127	08/10/2014	ING INTEGRA PERSONAL SUPER	SUPERANNUATION CONTRIBUTIONS	98.37
68128	08/10/2014	HOSTPLUS PTY LTD	SUPERANNUATION CONTRIBUTIONS	55.27
68129	08/10/2014	AUSTRALIAN RETIREMENT FUND - ARF ADMINISTRATION	SUPERANNUATION CONTRIBUTIONS	173.49

Chq/EFT	Date	Name	Description	Amount
68130	08/10/2014	COMMONWEALTH SUPERSELECT	SUPERANNUATION CONTRIBUTIONS	156.93
68131	08/10/2014	CASH - ZIG ZAG CULTURAL CENTRE	PETTY CASH REIMBURSEMENT	13.80
68132	08/10/2014	MACQUARIE WRAP	SUPERANNUATION CONTRIBUTIONS	637.30
68133	08/10/2014	WATER CORPORATION SUPERANNUATION PLAN	SUPERANNUATION CONTRIBUTIONS	268.66
68134	08/10/2014	TWU SUPERANNUATION FUND	SUPERANNUATION CONTRIBUTIONS	212.13
68135	08/10/2014	ONEPATH MASTERFUND	SUPERANNUATION CONTRIBUTIONS	190.43
68136	08/10/2014	KINETIC SUPERANNUATION LTD	SUPERANNUATION CONTRIBUTIONS	203.21
68137	08/10/2014	BENDIGO SMART START PERSONAL SUPER	SUPERANNUATION CONTRIBUTIONS	185.35
68138	08/10/2014	ANZ SMART CHOICE SUPER	SUPERANNUATION CONTRIBUTIONS	131.49
68139	08/10/2014	PERPETUALS SELECT SUPERANNUATION FUND	SUPERANNUATION CONTRIBUTIONS	110.12
68140	16/10/2014	SYNERGY	POWER CHARGES	6009.30
68141	22/10/2014	SHIRE OF KALAMUNDA	FLOAT FOR SENIORS WEEK 2014	200.00
68142	22/10/2014	SUNSTYLE HOLDINGS PTY LTD	CASH IN LIEU FOR PUBLIC OPEN SPACE - 24 ELMORE WAY HIGH WYCOMBE - WAPC 134818	278988.00
68143	22/10/2014	HOSPITAL BENEFIT FUND OF WA	PAYROLL DEDUCTIONS	377.35
68144	22/10/2014	AUSTRALIAN SERVICES UNION	PAYROLL DEDUCTIONS	225.90
68145	22/10/2014	MUNICIPAL EMPLOYEES UNION	PAYROLL DEDUCTIONS	582.00
68146	22/10/2014	TELSTRA CORPORATION	TELEPHONE EXPENSES	175.61
68147	22/10/2014	SYNERGY	POWER CHARGES	113339.85
68148	22/10/2014	ALINTA ENERGY	GAS CHARGES	590.15
68149	22/10/2014	DIRECTOR OF LICENSING SERVICES	LOCAL AUTHORITY SERIES NUMBER PLATES	400.00
68150	22/10/2014	CASH - ADMIN	PETTY CASH REIMBURSEMENT	983.05
68151	22/10/2014	CITY OF COCKBURN	LONG SERVICE LEAVE ENTITLEMENT FOR CAROL WILCOCKSON	165.04
68152	22/10/2014	CASH - KALAMUNDA LIBRARY	PETTY CASH REIMBURSEMENT	61.55
68153	22/10/2014	CASH - HARTFIELD PARK	PETTY CASH REIMBURSEMENT	72.30
68154	22/10/2014	WESTSCHEME SUPERANNUATION	SUPERANNUATION CONTRIBUTIONS	457.74
68155	22/10/2014	REST SUPERANNUATION	SUPERANNUATION CONTRIBUTIONS	1864.95

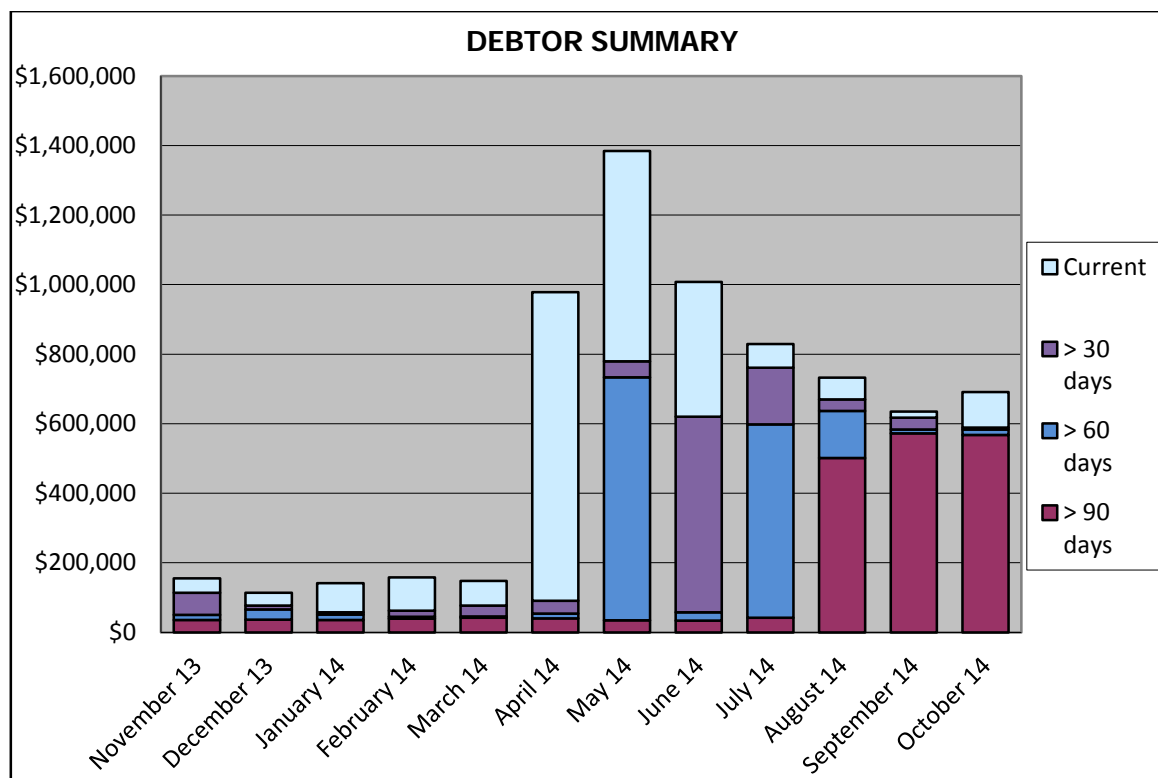
Chq/EFT	Date	Name	Description	Amount
68156	22/10/2014	AMP RETIREMENT SAVINGS ACCOUNT	SUPERANNUATION CONTRIBUTIONS	301.89
68157	22/10/2014	CBUS SUPERANNUATION	SUPERANNUATION CONTRIBUTIONS	210.22
68158	22/10/2014	COGNET NOMINEES PTY LTD ACF MAP SUPER FUND	SUPERANNUATION CONTRIBUTIONS	93.25
68159	22/10/2014	COLONIAL 1ST STATE SUPERANNUATION	SUPERANNUATION CONTRIBUTIONS	899.08
68160	22/10/2014	HESTA SUPER FUND	SUPERANNUATION CONTRIBUTIONS	1150.93
68161	22/10/2014	AMPLIFE LIMITED	SUPERANNUATION CONTRIBUTIONS	125.88
68162	22/10/2014	CASH - MEALS ON WHEELS	PETTY CASH REIMBURSEMENT	468.40
68163	22/10/2014	CASH - KALAMUNDA HACC	PETTY CASH REIMBURSEMENT	405.85
68164	22/10/2014	ANZ SUPER ADVANTAGE	SUPERANNUATION CONTRIBUTIONS	216.39
68165	22/10/2014	AMP SUPER LEADER	SUPERANNUATION CONTRIBUTIONS	113.99
68166	22/10/2014	ING INTEGRA PERSONAL SUPER	SUPERANNUATION CONTRIBUTIONS	176.45
68167	22/10/2014	AUSTRALIAN RETIREMENT FUND - ARF ADMINISTRATION	SUPERANNUATION CONTRIBUTIONS	179.16
68168	22/10/2014	COMMONWEALTH SUPERSELECT	SUPERANNUATION CONTRIBUTIONS	200.65
68169	22/10/2014	CASH - KPAC	PETTY CASH REIMBURSEMENT	87.70
68170	22/10/2014	MACQUARIE WRAP	SUPERANNUATION CONTRIBUTIONS	637.30
68171	22/10/2014	WATER CORPORATION SUPERANNUATION PLAN	SUPERANNUATION CONTRIBUTIONS	252.19
68172	22/10/2014	TWU SUPERANNUATION FUND	SUPERANNUATION CONTRIBUTIONS	212.13
68173	22/10/2014	ONEPATH MASTERFUND	SUPERANNUATION CONTRIBUTIONS	223.55
68174	22/10/2014	KINETIC SUPERANNUATION LTD	SUPERANNUATION CONTRIBUTIONS	211.92
68175	22/10/2014	BENDIGO SMART START PERSONAL SUPER	SUPERANNUATION CONTRIBUTIONS	205.94
68176	22/10/2014	ANZ SMART CHOICE SUPER	SUPERANNUATION CONTRIBUTIONS	262.98
68177	22/10/2014	PERPETUALS SELECT SUPERANNUATION FUND	SUPERANNUATION CONTRIBUTIONS	262.98
				4009378.95

Attachment 2

SHIRE OF KALAMUNDA
SUMMARY OF DEBTORS
FOR THE PERIOD ENDED 31 OCTOBER 2014

Sundry Debtors Trial Balance - Summary Aged Listing

	> 90 days	> 60 days	> 30 days	Current	Total
November 13	\$35,402	\$14,890	\$63,761	\$41,601	\$155,654
December 13	\$36,884	\$28,991	\$11,194	\$36,916	\$113,986
January 14	\$35,901	\$15,076	\$6,820	\$83,752	\$141,548
February 14	\$39,263	\$5,669	\$17,441	\$95,509	\$157,881
March 14	\$42,207	\$3,249	\$31,796	\$70,204	\$147,456
April 14	\$39,669	\$14,103	\$37,186	\$887,621	\$978,580
May 14	\$34,154	\$698,845	\$46,507	\$605,206	\$1,384,712
June 14	\$33,834	\$23,769	\$562,976	\$387,285	\$1,007,863
July 14	\$41,743	\$556,555	\$163,070	\$67,385	\$828,752
August 14	\$501,296	\$134,978	\$33,679	\$62,152	\$732,105
September 14	\$572,315	\$10,832	\$33,781	\$18,257	\$635,185
October 14	\$567,963	\$15,753	\$5,483	\$102,266	\$691,466



SHIRE OF KALAMUNDA SUMMARY OF DEBTORS FOR THE PERIOD ENDED 31 OCTOBER 2014			
AMOUNT	DEBTOR	DETAILS	STATUS
>90 days			
\$81,920.00	Discovery Parks *	Annual Waste Charges	Shire in negotiations.
\$3,447.94	Forrestfield United ^	Loan 214	Direct Debit \$600 per fortnight in place.
\$1,113.75	J & M Dunning *	Private Works	Debtor querying completion of work.
\$1,887.79	Kalamunda & Districts Football	Operating Expenses	Reminder invoices sent - further contact pending
\$3,360.00	Kalamunda Chamber of Commerce ^	Annual Rent	Direct Debit \$250 per fortnight in place.
\$3,636.98	Kalamunda Cricket Club ^	Operating Expenses Pat Moran Pavilion	To be off-set against sponsorship assistance.
\$165,000.00	Matt Stuart	Developer Contribution	Legal action has been commenced by the Shire
\$299,590.50	Velo Zupanovich	Developer Contribution	Matter pending at the State Administrative Tribunal (SAT).
\$2,164.24	Zig Zag Café ^	Lease / Operating Expenses	Payment schedule in place.
\$5,842.22	90+ Days Debts consisting of amounts under \$1,000.00.		Debtors to be contacted to advise debt recovery action pending / final notices issued / debt with D&B or possible write-off of debt pending.
\$567,963.42	Total Debts 90+ Days		
>60 days			
\$10,109.86	Kalamunda Club	Loan 219	Club pays in instalments - final instalment pending
\$3,671.26	Zig Zag Café ^	Lease / Operating Expenses	Payment schedule in place.
\$1,972.01	60+ Days Debts consisting of amounts under \$1,000.00.		All debtors to be contacted by telephone / email - copy invoices mailed as required.

\$15,753.13	Total Debts 60+ Days		
> 30 days			
\$2,306.59	City of Vincent *	Advertising Expenses	Query relating to expense
\$1,660.56	Roman Antoniuk	Planning Amendments	Reminder invoice to be sent.
\$1,138.21	Kalamunda Cricket Club	Loan 207	As above
\$378.00	30+ Days Debts consisting of amounts under \$1,000.00.		Reminder invoices to be sent.
\$5,483.36	Total Debts 30+ Days		
< 30 days			
\$106,212.28	Total of Current Debts		
\$3,946.67	Total of Accounts in Credit		
\$691,465.52	Total - Debtors Trial Balance		
FOOTNOTES			
* Denotes currently in negotiation of invoice amount and details			
^ Denotes payment arrangement in place			

Attachment 3

SHIRE OF KALAMUNDA
SUMMARY OF CREDITORS
FOR THE PERIOD ENDED 31 OCTOBER 2014

Sundry Creditors Trial Balance - Summary Aged Listing

Month End	> 90 days	> 60 days	> 30 days	Current	Total
31/07/2013	\$3,168	\$30,928	\$7,860	\$704,407	\$746,364
31/08/2013	\$1,618	\$6,095	\$46,102	\$542,740	\$596,555
30/09/2013	\$3,630	\$53,734	\$7,014	\$383,394	\$447,773
31/10/2013	\$12,120	\$1,454	\$107,830	\$1,566,553	\$1,687,957
30/11/2013	\$12,873	\$19,461	\$188,950	\$1,734,521	\$1,955,805
31/12/2013	\$1,090	\$8,183	\$10,820	\$781,525	\$801,618
31/01/2014	\$38,061	-\$3,986	\$64,483	\$863,813	\$962,372
28/02/2014	\$35,788	\$938	-\$2,540	\$2,145,331	\$2,179,518
31/03/2014	\$2,606	-\$2,850	\$14,442	\$846,590	\$860,788
30/04/2014	\$67,486	\$5,942	\$48,203	\$1,019,834	\$1,141,466
31/05/2014	\$183	\$31,578	\$72,756	\$1,596,398	\$1,700,916
30/06/2014	\$19,629	\$13,872	\$133,021	\$2,251,529	\$2,418,051
31/07/2014	\$9,347	\$1,978	\$27,392	\$449,082	\$487,799
31/08/2014	\$1,000	\$208,043	\$15,978	\$601,439	\$826,460
30/09/2014	\$11,865	\$62,484	\$62,683	\$908,456	\$1,045,488
31/10/2014	\$2,955	\$3,399	\$76,354	\$1,209,519	\$1,292,227

Comment

- > 90 days Original Invoices for Rubek Automatic Doors, Local Government Managers Australia & New Generation Homes, not received in Accounts to process
- > 60 days Original Invoices for Stylecorp, Perry Environmental Contracting and The Planning Group not received in Accounts to process.
- > 30 days These invoices are paid on the third fortnightly payment run.

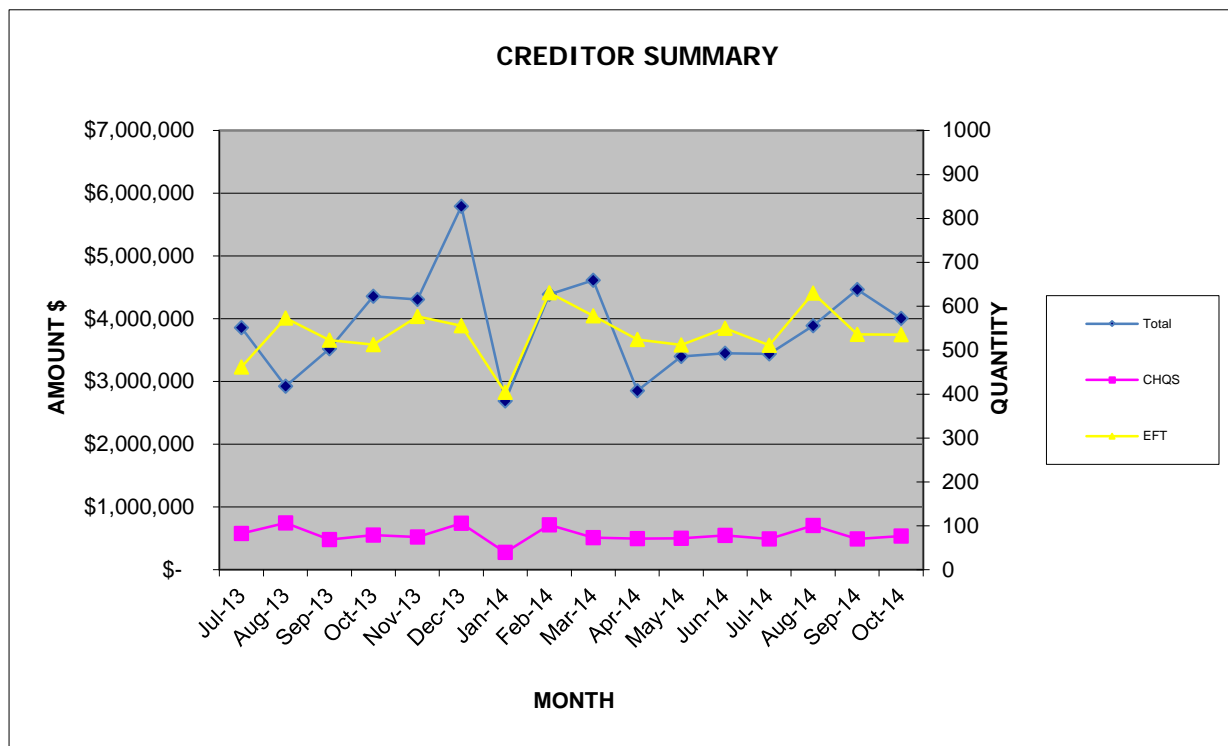
Creditor Payments made

Month	Amount \$	Quantity		
		Cheques	EFTs	Total
Jul-13	\$ 3,861,531	83	462	545
Aug-13	\$ 2,924,590	107	573	680
Sep-13	\$ 3,520,038	69	523	592
Oct-13	\$ 4,358,209	79	513	592
Nov-13	\$ 4,306,884	75	577	652
Dec-13	\$ 5,791,804	106	556	662
Jan-14	\$ 2,690,559	40	404	444
Feb-14	\$ 4,390,155	102	631	733
Mar-14	\$ 4,612,357	73	578	651
Apr-14	\$ 2,851,930	71	524	595
May-14	\$ 3,402,145	72	512	584
Jun-14	\$ 3,452,822	78	550	628
Jul-14	\$ 3,439,392	70	511	581
Aug-14	\$ 3,890,438	101	630	731
Sep-14	\$ 4,467,596	70	536	606
Oct-14	\$ 4,009,379	77	535	612

*Excludes net staff payroll

*Creditors on 30 day terms are paid on the 28th of the month following.

*Local suppliers are paid on 14 day terms.



Declaration of financial / conflict of interests to be recorded prior to dealing with each item.

49. Rates Debtors Report for the Period Ended 31 October 2014

Previous Items	N/A
Responsible Officer	Director Corporate Services
Service Area	Finance
File Reference	FI-DRS-004
Applicant	N/A
Owner	N/A

Attachment 1 Summary of Outstanding Rates for the period ended 31 October 2014

PURPOSE

1. To receive the report on rates debtors for the period ended 31 October 2014 (Attachment 1).

BACKGROUND

2. Rates notices were issued on 10 July 2014 with the following payment options:-

Options	Payment Dates			
Full Payment	14 August 2014			
Two Instalments	14 August 2014	18 December 2014		
Four Instalments	14 August 2014	16 October 2014	18 December 2014	12 February 2015

3. A total of 8,858 ratepayers have taken up an instalment option. 1466 have taken up the option to pay by two instalments and 7392 have taken up the option to pay by four instalments. Any amounts outstanding by those ratepayers without an instalment option are regarded as defaulted.
4. The Shire can accept a direct debit payment arrangement to finalise the balance or a special payment arrangement is made in extenuating circumstances. Strict protocols are maintained so that the Shire is seen to be fair and equitable to all ratepayers. 498 ratepayers have taken up a direct debit payment arrangement and this will continue to increase as Letters of Demand were sent out in October 2014.
5. The Shire of Kalamunda now offers direct debit arrangements for instalments, however at this stage there has been little response.
6. As noted on (Attachment 1), the Shire has collected \$20,215,657 or 64.35% of the debt from the date the rates and service charges were raised, compared to 67% at the same period last year. The lower collection rate is attributed to more ratepayers taking up the four instalment option or direct debit option. This rate should normalise by end of February 2015 when the final instalment date is reached.
7. Interim rates have commenced and are almost up to date.

DETAILS

Debt Recovery

8.
 - There are nine outstanding debts from 2012/13 that remain with Dun & Bradstreet (D&B) who have had Judgement entered against them; All have been issued with "Property Sales and Seizure Order" the next step is to proceed with Land Warrants for these properties which will occur in November 2014.
 - There are 31 ratepayers from 2013/14 who received judgement orders, 17 of which are expected to pay their rates balance shortly. For the remaining ratepayers who have not responded to judgement and where no payment has been received, the Shire will proceed to a Land Warrant.
 - Letters of Demand have been sent and the final date for payment was Friday 31 October 2014. Of the 1018 Letters of Demand sent, 258 have paid in full, 37 have committed to pay by 7 November 2014, 143 have taken up a Direct Debit payment arrangement and 149 are under the Legal threshold limit and will be pursued by alternative methods. This leaves 431 who have not responded and will be forwarded to Dunn & Bradstreet to issue General Procedure Claims.

STATUTORY AND LEGAL CONSIDERATIONS

9. The Shire collects its rates debts in accordance with the *Local Government Act (1995) Division 6 – Rates and Service Charges under the requirements of subdivision 5 – Recovery of unpaid rates and service charges.*

POLICY CONSIDERATIONS

10. Nil.

COMMUNITY ENGAGEMENT REQUIREMENTS

11. Nil.

FINANCIAL CONSIDERATIONS

12. The early raising of rates in July has allowed the Shires operations to commence without delays in addition to earning additional interest income.

STRATEGIC COMMUNITY PLAN

Strategic Planning Alignment

13. *Kalamunda Advancing: Strategic Community Plan to 2023*

OBJECTIVE 6.8 – To ensure financial sustainability through the implementation of effective financial management, systems and plans.

Strategy 6.8.4 Provide effective financial services to support the Shire's operations and to meet sustainability planning, reporting and accountability requirements.

SUSTAINABILITY

Social Implications

14. Debt collection can have implications upon those ratepayers facing hardship and the Shire must ensure equity in its debt collection processes.

Economic Implications

15. Effective collection of all outstanding debtors leads to enhanced financial sustainability for the Shire.

Environmental Implications

16. Nil.

RISK MANAGEMENT CONSIDERATIONS

17.

Risk	Likelihood	Consequence	Rating	Action/Strategy
The Shire is exposed to the potential risk of the ratepayer failing to make payments which it is obligated to do. This will result in the disruption of cash flows and increased collection costs.	Possible	Major	High	Ensure debt collections is rigorously managed.

OFFICER COMMENT

18. Nil.

Voting Requirements: Simple Majority

OFFICER RECOMMENDATION (C&C 49/2014)

That Council:

1. Receives the rates debtors report for the period ended 31 October 2014 (Attachment 1).

Moved:

Seconded:

Vote:

Attachment 1

SHIRE OF KALAMUNDA
SUMMARY OF OUTSTANDING RATES
FOR THE PERIOD ENDED 31 OCTOBER 2014

Rates Outstanding Debtors

	3rd Previous Year + Outstanding	2nd Previous Year Outstanding	Previous Year Outstanding	Current Outstanding	Total Outstanding	Previous Year Total Outstanding
30/06/2014	\$360,404	\$99,230	\$410,138	\$0	\$869,771	\$781,022
30/07/2014	\$356,534	\$95,176	\$367,211	\$25,230,436	\$26,049,358	\$23,847,216
31/08/2014	\$353,872	\$93,646	\$269,381	\$14,958,090	\$15,674,989	\$9,913,660
30/09/2014	\$352,809	\$91,016	\$238,764	\$13,799,268	\$14,481,858	\$13,152,890
31/10/2014	\$348,081	\$89,705	\$211,614	\$10,752,865	\$11,402,265	\$9,412,015

Rates Outstanding as at 30/06/2014

\$869,771

Rate Levied 2014/2015

Interim 2014/2015

Back Rates

\$30,121,746

\$167,297

\$3,476

Total Levies To Date for 2014/2015

\$30,292,519

Total Collectable

\$31,162,291

Total Rates Outstanding

\$11,402,265

Current Deferred Rates Amount (from Rate Reports)

\$ 455,632

Total Rates amount to be collected not including deferred

\$10,946,634

% of Rates Outstanding:

35.65%

% of Rates Collected:

64.35%

Comment

The 2014/2015 Instalment Dates are as follows:

	4x instalments	2x instalments
1st Instalment	14/08/2014	14/08/2014
2nd Instalment	16/10/2014	18/12/2014
3rd Instalment	18/12/2014	
4th Instalment	12/02/2015	

Declaration of financial / conflict of interests to be recorded prior to dealing with each item.

50. Quarterly Progress Report – July-September 2014

Previous Items	N/A
Responsible Officer	Chief Executive Officer
Service Area	Office of the CEO
File Reference	OR-CMA-009
Applicant	N/A
Owner	N/A
 Attachment 1	 Quarterly Progress Report – July-September 2014

PURPOSE

1. To report to Council on the Shire's progress towards achieving its strategic goals.

BACKGROUND

2. The Quarterly Progress Report is generated from the Shire's integrated planning system, "interplan". The report reflects the progress of individual actions, which are linked to Council's Strategic Plan. This ensures that each employee is working towards achieving the strategic direction of the Council.
3. The person responsible for an action or task in interplan is required to provide an update each month, giving an indication of how the action is progressing. Key Performance Indicators (KPIs) are also updated. This information is collated by interplan to provide an overview of how the organisation is performing.

DETAILS

4. The Quarterly Progress Report for the period 1 July 2014 to 30 September 2014 is presented as (Attachment 1).
5. The report shows the progress of the actions and Key Performance Indicators for 2014/2015 from the Corporate Business Plan, *Kalamunda Achieving*. The report also shows the progress of the Shire against the goals set out in Council's Strategic Plan to 2023, *Kalamunda Advancing*.

Quarterly Progress Against Goals

6. Each business unit in the Shire has a business plan, which contains the actions to be achieved in the 2014/2015 year. Each of these actions is linked to a strategy, outcome and goal in the Strategic Plan adopted by Council.
7. Of the 379 actions monitored across the organisation, 318 (or 84%) are at 90% or more of their progress target for the year to date. 51 actions (13%) are at less than 70% of their progress target. This is a significant improvement on last quarter, due to an extensive review of each business unit's action plan, and an increased focus on accountability.

-
8. The five actions listed as “Actions With No Target” are those that are not due to start until later in the year.

Key Performance Indicators

9. Performance against the Shire’s corporate KPIs is shown. At this stage, a number of the annual KPIs have not been updated. These measures have been derived from the Shire’s Strategic Plan, to be reported to Council and the community.
10. Of the remaining 11 KPIs, for the period 1 July 2014 - 30 September 2014 –
- Seven are at or exceeding their target.
 - Three are within 10% of their target.
 - One is below 10% of its target.
11. The “off-track” KPI is – *Response to Councillor enquiries*
It appears that the issue lies in the Records system not being updated when enquiries are completed, rather than enquiries not being dealt with on time. Ways to reinforce the correct procedure are being examined. This may include additional training and improved induction processes.
12. Please note that the “traffic light” indicator on the Report only relates to the month of September 2014, not to the whole quarter.

Major Projects

13. The Corporate Business Plan, *Kalamunda Achieving*, sets out a number of Priority Actions for the Shire for the four-year period to 30 June 2018. The progress of the Priority Actions for 2014/2015 is shown in the Major Projects section of the Report.
14. The majority of actions are on track (209 out of a total of 242). Of the 14 actions which are off-track (indicated by a red traffic light), most have been delayed due to the uncertainty resulting from the local government reform process. Comments indicating the status of all actions and their current progress are included in pages 6 to 71 of the report.

STATUTORY AND LEGAL CONSIDERATIONS

15. Nil.

POLICY CONSIDERATIONS

16. Nil.

COMMUNITY ENGAGEMENT REQUIREMENTS

17. The report is presented to keep Council informed of the organisation’s progress. The community is advised of the Shire’s achievements and progress via the Annual Report.

FINANCIAL CONSIDERATION

18. Financial progress is reported monthly via the Monthly Financial Statements.

STRATEGIC COMMUNITY PLAN

Strategic Planning Alignment

19. *Kalamunda Advancing: Strategic Community Plan to 2023*

OBJECTIVE 6.7 – To provide a business environment that strives for continuous improvement through the use of highly effective business systems and processes.

Strategy 6.7.4 Develop and maintain information systems to capture, monitor and compare corporate data and performance.

SUSTAINABILITY

Social Implications

20. Nil.

Economic Implications

21. Nil.

Environmental Implications

22. Nil.

RISK MANAGEMENT CONSIDERATIONS

23.

Risk	Likelihood	Consequence	Rating	Action/Strategy
The Shire fails to carry out the actions set out in the corporate Business Plan.	Unlikely	Major	Medium	Regular reporting of action progress to CEO, Directors and Council to ensure that performance is monitored and managed.
KPIs are not met – standard of customer service declines.	Possible	Major	High	Regular reporting of KPI achievement to CEO, Directors and Council to ensure that performance is monitored and managed.

OFFICER COMMENT

24. Nil.

Voting Requirements: Simple Majority

OFFICER RECOMMENDATION (C&C 50/2014)

That Council:

1. Receives the Quarterly Progress Report for July – September 2014 ([Attachment 1](#)).

Moved:

Seconded:

Vote:

Attachment 1

Quarterly Progress Report July – September 2014

[Click HERE to go directly to the document](#)

Declaration of financial / conflict of interests to be recorded prior to dealing with each item.

51. Schedule of Council and Committee Meetings 2015

Previous Items	N/A
Responsible Officer	Chief Executive Officer
Service Area	Governance
File Reference	OR-MTG-006
Applicant	N/A
Owner	N/A
Attachment 1	Proposed Schedule of Council and Committee Meetings for the period February 2015 to June 2015.

PURPOSE

1. For Council to endorse the Schedule of Meetings for the period February 2015 to June 2015 (Attachment 1).

BACKGROUND

2. Council has previously agreed the cycle of Ordinary Meetings be as follows:
 - Development & Infrastructure Services Committee – second Monday of the month.
 - Corporate & Community Services Committee – third Monday of the month.
 - Ordinary Council Meeting – fourth Monday of the month.
3. Council policy determines that scheduled meeting dates which fall on a Public Holiday will move to the next available day and that meetings in December be brought forward by one week.
4. Committee and Council Meetings are held at 6.30pm in the Council Chambers of the Shire of Kalamunda, 2 Railway Road, Kalamunda.
5. This Meeting Schedule runs until 30 June 2015 due to the fact that Kalamunda Shire Council will be abolished on that date.

DETAILS

6. The proposed meeting schedule has been developed in accordance with the above requirements, except for the June 2015 round of meetings.
7. It is proposed that as the Shire of Kalamunda is to be abolished on 30 June 2015 that the June meeting cycle be put back one week with the final Ordinary Council Meeting being scheduled for Monday 29 June 2015 commencing at 6.00pm, followed by a farewell dinner.

STATUTORY AND LEGAL CONSIDERATIONS

8. Section 5.4 (b) of the *Local Government Act 1995* (the Act), provides that the Council can decide when to hold ordinary meetings.

9. It is a requirement of Regulation 12 of the *Local Government (Administration) Regulations 1996* that local public notice be given of the meeting dates.

POLICY CONSIDERATIONS

10. The schedule of meetings has been developed in accordance with policy requirements.

COMMUNITY ENGAGEMENT REQUIREMENTS

11. Not required for this decision.

FINANCIAL CONSIDERATION

12. None from this decision.

STRATEGIC COMMUNITY PLAN

Strategic Planning Alignment

13. *Kalamunda Advancing: Strategic Community Plan to 2023*

Strategic Priority 6: Kalamunda Leads – Providing Good Government

SUSTAINABILITY

Social Implications

14. Nil.

Economic Implications

15. Nil.

Environmental Implications

16. Nil.

RISK MANAGEMENT CONSIDERATIONS

17.

Risk	Likelihood	Consequence	Rating	Action/Strategy
Proposed schedule of meetings is not approved	Possible	Major	High	Council would need to adopt an alternative strategy to set meeting dates in order that it complies with the requirements of the Act.

OFFICER COMMENT

18. The proposed meeting scheduled has been developed in accordance with the current meeting cycle.
19. Meeting dates have not been scheduled for the Audit & Risk Committee as it is convened on an as needs basis.

Voting Requirements: Simple Majority

COMMITTEE RECOMMENDATION TO COUNCIL (C&C 51/2014)

That Council:

1. Endorses the Schedule of Committee and Council Meetings (Attachment 1) for the period February 2015 to June 2015.

Moved:

Seconded:

Vote:

Attachment 1

Proposed Schedule of Committee and Council Meetings for the Period February 2015 to June 2015.

All meetings commence at 6.30pm, apart from the final Ordinary Council Meeting which will commence at 6.00pm

January 2015

No Meetings Scheduled

February 2015

Monday 09	Development & Infrastructure Services Committee
Monday 16	Corporate & Community Services Committee
Monday 23	Ordinary Council Meeting

March 2015

Monday 09	Development & Infrastructure Services Committee
Monday 16	Corporate & Community Services Committee
Monday 23	Ordinary Council Meeting

April 2015

Monday 13	Development & Infrastructure Services Committee
Monday 20	Corporate & Community Services Committee
Tuesday 28	Ordinary Council Meeting

May 2015

Monday 11	Development & Infrastructure Services Committee
Monday 18	Corporate & Community Services Committee
Monday 25	Ordinary Council Meeting

June 2015

Monday 15	Development & Infrastructure Services Committee
Monday 22	Corporate & Community Services Committee
Monday 29	Ordinary Council Meeting

Declaration of financial /conflict of interests to be recorded prior to dealing with each item.

52. Petition requesting approval and completion of playground at Public Open Space on Bluebell Avenue, High Wycombe

Previous Items	Nil
Responsible Officer	Chief Executive Officer
Service Area	Community Development
File Reference	BL-17/041 CS-SDM-001
Applicant	N/A
Owner	Shire of Kalamunda
Attachment 1	Signed Petition from Residents
Attachment 2	Approved Subdivision Plan
Attachment 3	Aerial map of Bluebell Avenue Public Open Space
Attachment 4	Location Plan of Other Reserves in High Wycombe

PURPOSE

1. To receive a petition from the residents of Bluebell Avenue and the surrounding area in High Wycombe (Attachment 1).

BACKGROUND

2. In September 2014, the Shire received a petition from the local residents of Springvale Garden Estate, High Wycombe requesting approval and completion of a playground at the Public Open Space (POS) located on Bluebell Avenue.
3. Springvale Gardens Estate is located south of Maida Vale Road in High Wycombe, adjacent to Poison Gully Creek.
4. Bluebell Avenue is located within the Springvale Gardens Estate and contains POS which is Crown Land vested with the Shire for the purpose of recreation.
5. In May 2010, the Western Australian Planning Commission (The Commission) approved an application to subdivide the subject area, previously known as Lot 10 (161) Maida Vale Road, High Wycombe, into forty three (43) freehold lots (Attachment 2).
6. The approved subdivision provided POS with an area of 3,080sqm along the southern (rear) boundary of the property, and conditions of the subdivision approval relating to this POS included the following:
 - The proposed reserve being a "Reserve for Recreation" and ceded free of cost and without any payment of compensation by the Crown.
 - The preparation and implementation of a landscape plan for the proposed POS.
7. The majority of the residential lots have since been redeveloped or are in the process of being.

-
8. The Shire's Long Term Financial Plan currently does not identify any funds for the development of Bluebell Avenue POS.
 9. As such, the petition regarding the upgrade of Bluebell Avenue POS is now presented for Council consideration.

DETAILS

10. Bluebell POS is located on Bluebell Avenue, High Wycombe and currently includes infrastructure of a limestone surround, footpath and access driveway which has been completed by the developer as part of the landscape plan.
11. The petition received has 55 signatures from local residents of Bluebell Avenue and surrounding streets and indicates that over 40 children would potentially benefit for the proposed improvements.
12. The petition states "We the visitors and residents of Bluebell Avenue and surrounding streets demand the Kalamunda Shire approve and complete the playground that was proposed by the Developer and has infrastructure partially completed for the following reasons:
 - Our children need a safe place to play
 - Number of children at the household
 - Kids need to play
 - Area for families and communities
13. The proposed playground is to include items and estimated costs as follows:

• Combination play unit	\$23,000
• Shade	\$15,000
• Rubber soft fall	\$20,000
• Seating \$2,000	
Total	\$60,000
14. The subdivision approval granted by the Commission for the subject area, although including a requirement to landscape the POS, did not include the provision of a playground facility in the POS area.
15. The Communities Facilities Plan (the Plan) currently does not specifically identify for this POS to have any future infrastructure, however the Plan does support a need for three local developed parks in the area south of Maida Vale Road in the adjacent suburb of Maida Vale by 2019/2020.
16. Local Level Park – "Developed", consists of the following design elements:
 - Within a 400 metre radius or 5 minute walk of most dwellings
 - Minimum site 0.5 ha
 - Street frontage on all sides, maximum 20% of perimeter abutting development
 - Rectangular in shape and minimum width of 50 metres
 - Playground equipment/playspace capable of catering for:

-
- 0-3 yr olds
 - 3-5 yr olds
 - 5-7 yr olds
 - 8-12 yr olds
 - Incorporate natural and designed play elements
 - Quiet space with shade, views and bench seating
 - Grassed area in most local parks
 - In natural/bush local parks soft fall or synthetic surface
 - Amenities – natural or artificial shade, bench seating, pathways on to the park and to the playspace
 - Involve the surrounding local area in the design of the park
 - Design elements to reflect the identity and culture area

STATUTORY AND LEGAL CONSIDERATIONS

17. Nil.

POLICY CONSIDERATIONS

18. Cash-in-lieu Assessment Criteria Policy (FAC22) provides strategic direction to Council's decision making on proposed cash-in-lieu projects.
19. Planning Policy DC 2.3 – Public Open Space in Residential Areas established the requirements of the Western Australian Planning Commission (WAPC) for POS and the provision of land for community facilities in residential areas. The policy requires that 10% of the gross subdivisible area shall be given up free of cost by the subdivider for POS or equivalent value Cash-in-Lieu and that expenditure of cash-in-lieu funds must be directed to the locality where the funds were raised.

COMMUNITY ENGAGEMENT REQUIREMENTS

20. The Shire has recently met with the instigator of the petition, Heather Chappel (Local Resident) to discuss the petition and clarify the works that the petition is referring to. Heather advised that the proposed works were requested to include items such as:
- Combination play unit
 - Shade
 - Seating
 - Rubber soft fall

FINANCIAL CONSIDERATION

21. Council's Long Term Financial Plan currently does not have any funds allocated for improvements to Bluebell Avenue POS. However, funds of a total of \$210,000 have been identified in the 2019/20 year of Council's Long Term Financial Plan, to undertake the establishment of three local parks-developed in the area South of Maida Vale Road.
22. Due to some preparation works having already having been completed by the developer such as the limestone surround for the playground it is

proposed that \$60,000 would be a suitable amount to bring the park to a local developed level.

23. Should Council wish to support the request, the options for funding the requested infrastructure include the following:
- Bringing forward funds allocated within the Long Term Financial Plan for new reserves in High Wycombe
 - Cash in Lieu funds
 - Municipal funds
24. Within the Cash-In-Lieu funds, \$845,322 is available to the High Wycombe area.
25. Under the subdivision plan there is no written requirement or agreement for the developer to contribute towards the competition of a playground.

STRATEGIC COMMUNITY PLAN

Strategic Planning Alignment

26. *Kalamunda Advancing: Strategic Community Plan to 2023*

OBJECTIVE 1.9 To provide high quality community facilities to meet the needs of our current and our future community.

SUSTAINABILITY

Social Implications

27. The provision of high quality parks and reserves assists in ensuring the community is both active and engaged.

Economic Implications

28. Nil.

Environmental Implications

29. Nil.

RISK MANAGEMENT CONSIDERATIONS

- 30.
- | Risk | Likelihood | Consequence | Rating | Action/Strategy |
|---|------------|-------------|--------|--|
| That the petitioners believe that their concerns have not been heard. | Unlikely | Minor | Low | Advise the petitioners in writing of the rationale and Council's decision, together with providing an opportunity to meet and further discuss. |

OFFICER COMMENT

31. The Community Facilities Plan recommends establishing three local level parks in Maida Vale, south of Maida Vale Road, as residential development occurs. Funds of \$210,000 have been included in the long term financial plan for 2019/20.

32. Within the nearby area and locality of High Wycombe, there are a number of other areas of Public Open Spaces (Attachment 3) in particular:

Local Open Space Developed

- Agrulia Court Reserve (located 450m from Bluebell Avenue)
- John MacLarty Reserve (Located 800m from Bluebell Avenue)
- Peter Hegney Reserve (Located 700m from Bluebell Avenue)
- Scott Reserve (Located 500m from Bluebell Avenue)

District Open Space

- Fleming Reserve (Located 1.1kms from Bluebell POS) - It should be acknowledged that this reserve is a drive to park for nearby residents and major roads need to be crossed.

33. Whilst it could be argued that the current level of amenity is considered to be sufficient, the nearby reserves are difficult to access due to major roads such as Maida Vale Road and Roe Highway and limited connectivity of path networks.

34. Options for consideration:

1. Council does not support the development of a playground at the Bluebell Avenue POS;
2. Council supports the development of a playground to be funded by Cash in Lieu funds; or
3. Council supports the development of a playground using municipal funds, with funds considered as part of the mid-year budget review process.

35. As such, it is recommended that Council considers allocating up to \$60,000 of Cash in Lieu of Public Open Space funds to install playground equipment, shade sails and rubber soft fall at the site.

36. The Long Term Financial plan is updated and the \$210,000 allocated for 2019/2020 for the establishment of three new parks south of Maida Vale Road be condensed to two and the budget is reduced to \$150,000.

Voting Requirements: Simple Majority

OFFICER RECOMMENDATION (C&C 52/2014)

That Council:

1. Receives the petition for the approval and completion of a playground and associated infrastructure at the Bluebell Avenue Public Open Space (Attachment 1).
2. Endorses an application to the Minister for Planning to utilise \$60,000 cash-in-lieu funds to complete infrastructure at Bluebell Avenue Public Open Space.
3. Requests the Chief Executive Officer to advise the petitioner, Heather Chappel in writing of Council's resolution in relation to the Bluebell Avenue Public Open Space Petition and the current timing of the approval process through the Minister for Planning.

Moved:

Seconded:

Vote:

Attachment 1

Proposed Park for Bluebell Avenue High Wycombe

As the residents and visitors of Bluebell Avenue and surrounding streets we demand the Kalamunda Shire approve and complete the playground that was proposed and has infrastructure partially completed for the following reasons -

	Name	Address	Signature	Reason
1	H. Chappel	18 Bluebell Ave H.W	<i>[Signature]</i>	Our children need a place to play safely.
1	J Zappacosta	14 Bluebell Ave	<i>[Signature]</i>	the kids need somewhere close and safe to play
	B. F. Munnissen	10 Bluebell Ave	<i>[Signature]</i>	Necessary Activity Area.
	K Turner	8 Bluebell Ave	<i>[Signature]</i>	children need a safe place to play
1	M. APPS	2 Bluebell Ave	<i>[Signature]</i>	Safety for Kids.
2	M. R. CARINO	3 Bluebell Ave	<i>[Signature]</i>	for him
1	Gigi Corti	7 Bluebell Ave	<i>[Signature]</i>	1 child
1	MAR GERONIMO	15 Bluebell Ave	<i>[Signature]</i>	1 child
2	U-JAY SIENA	17 Bluebell Ave	<i>[Signature]</i>	2 CHILDREN NEEDS PLACE FOR PLAYING
3	Daniel Harvey	21 Bluebell Ave	<i>[Signature]</i>	3 KIDS, GREAT SAFE ENVIRONMENT FOR KIDS
2	Rachel Power	23 Bluebell Ave	<i>[Signature]</i>	2 KIDS, SAFE PLACE TO PLAY, AWAY FROM CARS
	MARYLAW ARALYAN	39 Bluebell Ave	<i>[Signature]</i>	CHILDREN PLAYING IN STREET
	Math Stanton	28 Bluebell Ave	<i>[Signature]</i>	Give the kids somewhere to play off street
	Lauren Kaebate	32 Bluebell Ave H.W.	<i>[Signature]</i>	Proposed children
	Marian Gore	32 Bluebell Ave H.W	<i>[Signature]</i>	Proposed children
1	E. SEMBLANCE	38 Bluebell Ave H.W	<i>[Signature]</i>	KEEP CHILDREN OFF THE STREET
	P. REICHER	27 Bluebell Ave H.W	<i>[Signature]</i>	Keep children somewhere safe.
4	S Power	29 Bluebell Ave H.W	<i>[Signature]</i>	Safety of our kids
2	Fiona Daddow		<i>[Signature]</i>	Safe & close to play with friends
2	Caroline Bell	15 Lambertia Cres	<i>[Signature]</i>	Safety for kids to play outdoors.
3	A Harvey	21 Bluebell Ave	<i>[Signature]</i>	Great place for one.
	V. BECKETT	20 Bluebell Ave	<i>[Signature]</i>	lots of kids need play area
	K. Jenkin	42 Bluebell Ave	<i>[Signature]</i>	Safety for kids to play & not in the street
	B. STEVENSON	42 Bluebell Ave	<i>[Signature]</i>	KIDS OFF THE STREET
3	Margiulle Appony	33 Bluebell Ave High Wycombe	<i>[Signature]</i>	KIDS need to play

Proposed Park for Bluebell Avenue High Wycombe

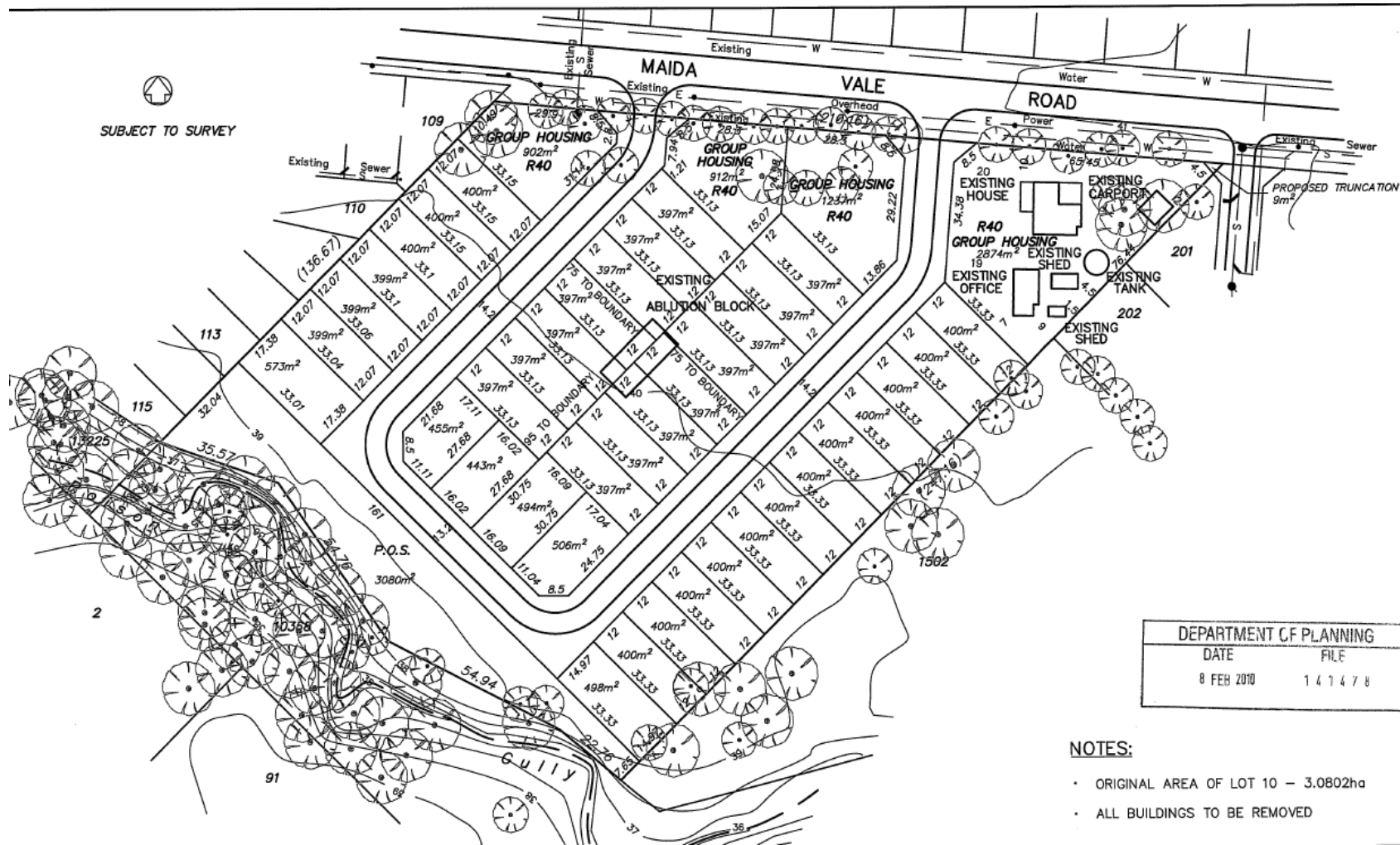
As the residents and visitors of Bluebell Avenue and surrounding streets we demand the Kalamunda Shire
 approve and complete the playground that was proposed and has infrastructure partially completed for the following reasons -

Name	Address	Signature	Reason
Tracy Austin	31 Bluebell Avenue High Wycombe		Help kids to be in a safe area to play.
DEAN SOUTH	35 BLUEBELL AVE HIGH WYCOMBE		KIDS
x1 MEMOR VAN DEN HUL	37 Bluebell AVE HIGH WYCOMBE		KIDS
D GUNN	52 Bluebell Ave H.W.		KIDS
2 Natalie Friend	171 Maida Vale Rd		KIDS
ROBERT FRANKS	175 MAIDA VALE RD		
4 Amanda Kosovich	177 Maida Vale Rd		For the safety of the kids.
KEITH BLANKAERS	179A MAIDA VALE RD		FOR THE SAFETY OF THE KIDS
MARY HULCHINGS	179B MAIDA VALE RD		FOR THE KIDS.
Steve Warrack	9 Milner Road High Wycombe		For safety of the kids
J. Goodall	13 Milner Road		
2 L. Bartlett	15a Milner Road, High Wycombe		Area for families in the community to go
2 A & S. KEO	10 MILNER ROAD HIGH WYCOMBE		HELP THE KIDS TO BE SAFE
KENNETH DUNN	8 Larine Gardens		for the kids
Aaron Casanova	8 Larine Gardens		" " "
DAVID PETERSEN	8 LARINE GARDENS		" " "
1 MELISSA JOLLY	11 Larine Gardens, High Wycombe		For the kids
1 NATALIE KNOTT	14 Larine Gardens High Wycombe		Safety of the kids
Greg Smea	5 Larine Garden High Wycombe		For the kids
LUKE CASPARARO	3 LARINE GARDENS H/WYCOMBE		FOR THE KIDS
DASHY	LOT 4 VROMANS SHIRE PREST.		FOR COMMUNITY
1 SOL BEHSMAN	23 NUGENT ST., ESPERANCE		FOR THE KIDS
3 Chris Booth	16 Bluebell Ave High Wycombe		Kids !!
1 Kelly Smith	90b Edney Rd High Wycombe		For the children.

Name	Address	Signature	Reason
KATE MALKIEWICZ	53 BUTTERCUP CREK HIGH WYCOMBE		SAFE PLAY AREA FOR KIDS
KASSANDRA CUMMING	31 FEENEY GARDENS HIGH WYCOMBE		LIVE CLOSE; RATE ON SAME SIDE ROAD!
Belinda JACKSON	196 Maida Vale Rd High Wycombe		My kids dad lives in street so they need somewhere to play

Attachment 2

Petition requesting approval and completion of playground at Public Open Space on Bluebell Avenue, High Wycombe
Approved Subdivision Plan

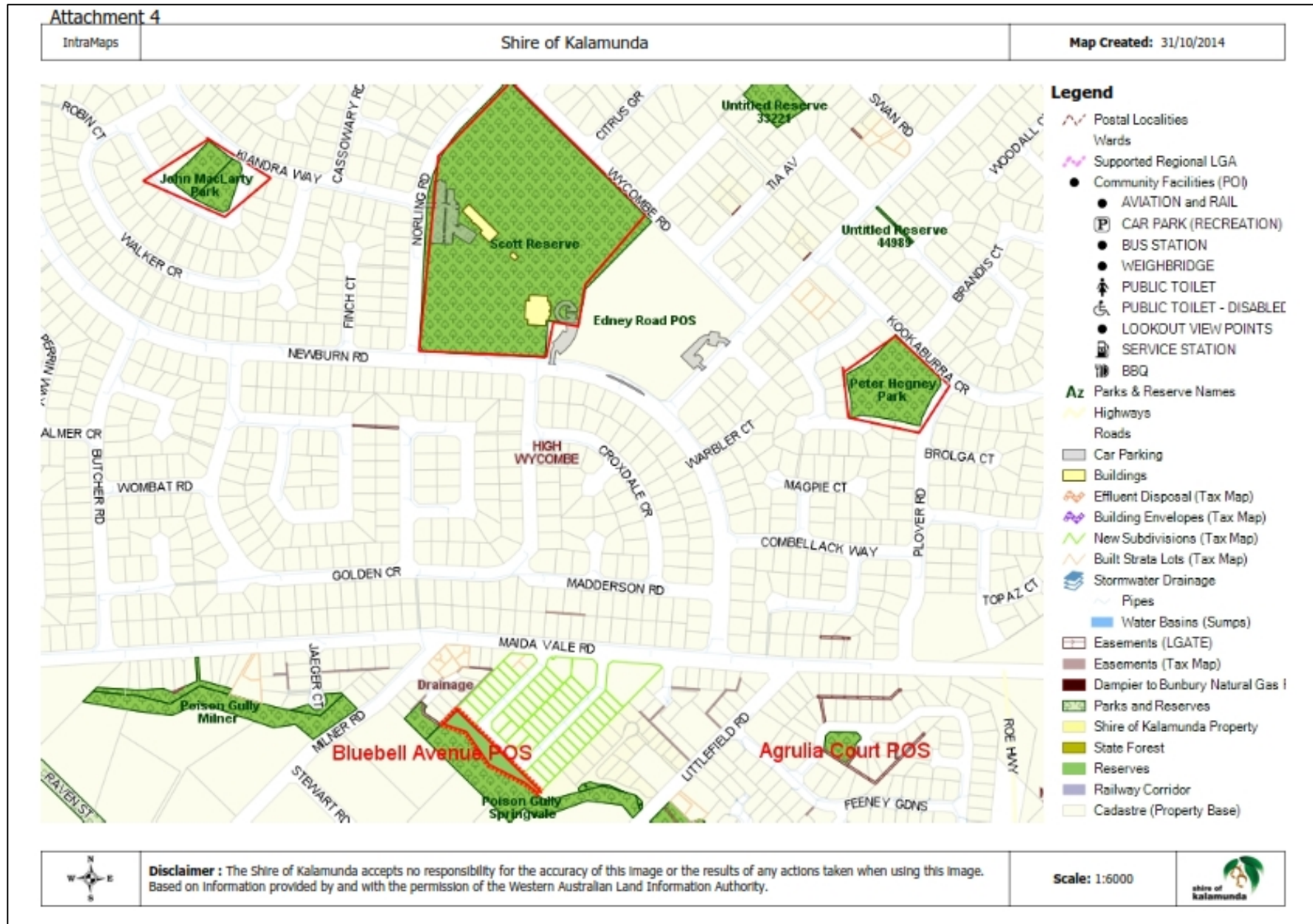


Attachment 3

Petition requesting approval and completion of playground at Public Open Space on Bluebell Avenue, High Wycombe

Aerial plan of Bluebell Public Open Space





Declaration of financial / conflict of interests to be recorded prior to dealing with each item.

53. CONFIDENTIAL REPORT - Consideration of Tenders – Forrestfield Skate Park (RFT 1403)

Reason for Confidentiality *Local Government Act 1995 S5.23 (d) (c) – “a contract entered into, or which may be entered into, by the local government which relates to a matter to be discussed at the meeting.”*

Previous Items	Nil
Responsible Officer	Director Infrastructure Services
Service Area	Infrastructure Operations
File Reference	RFT 1403
Applicant	N/A
Owner	N/A

Confidential Attachment 1	Confidential Attachment – Tender Evaluation Report <u>Reason for Confidentiality</u> <i>Local Government Act 1995 S5.23 (d) (c) – “a contract entered into, or which may be entered into, by the local government which relates to a matter to be discussed at the meeting.”</i>
---------------------------	---

Full Report circulated to Councillors under separate cover.

10.0 MOTIONS OF WHICH PREVIOUS NOTICE HAS BEEN GIVEN

11.0 QUESTIONS BY MEMBERS WITHOUT NOTICE

12.0 QUESTIONS BY MEMBERS OF WHICH DUE NOTICE HAS BEEN GIVEN

12.1 Cr Simon Di Rosso – Car Club at Woolworths Car Park

Q. Are you aware that a Car Club seems to be meeting at the Woolworth's Shopping Centre every month or so and causing issues?

A. The Shire has not received any complaints relating to a Car Club meeting regularly at the Kalamunda Glades car park. The Forrestfield Police advise that they are not aware of any issues.

13.0 URGENT BUSINESS APPROVED BY THE PRESIDING MEMBER OR BY DECISION

14.0 MEETING CLOSED TO THE PUBLIC

15.0 CLOSURE