

Corporate & Community Services Committee Meeting

Agenda for 17 August 2015



**shire of
kalamunda**

NOTICE OF MEETING CORPORATE & COMMUNITY SERVICES COMMITTEE

Dear Councillors

Notice is hereby given that the next meeting of the Corporate & Community Services Committee will be held in the Council Chambers, Administration Centre, 2 Railway Road, Kalamunda on **Monday 17 August 2015 at 6.30pm.**

Dinner will be served prior to the meeting, at 5.30pm.


Rhonda Hardy
Chief Executive Officer
12 August 2015

Our Vision and Our Values

Our Vision

The Shire will have a diversity of lifestyle and people. It will take pride in caring for the natural, social, cultural and built environments and provide opportunities for people of all ages.

Our Core Values

Service – We deliver excellent service by actively engaging and listening to each other.

Respect – We trust and respect each other by valuing our difference, communicating openly and showing integrity in all we do.

Diversity – We challenge ourselves by keeping our minds open and looking for all possibilities and opportunities.

Ethics – We provide honest, open, equitable and responsive leadership by demonstrating high standards of ethical behavior.

Our Aspirational Values

Prosperity – We will ensure our Shire has a robust economy through a mixture of industrial and commercial development.

Harmony – We will retain our natural assets in balance with our built environment.

Courage – We take risks that are calculated to lead us to a bold new future.

Creativity – We create and innovate to improve all we do.

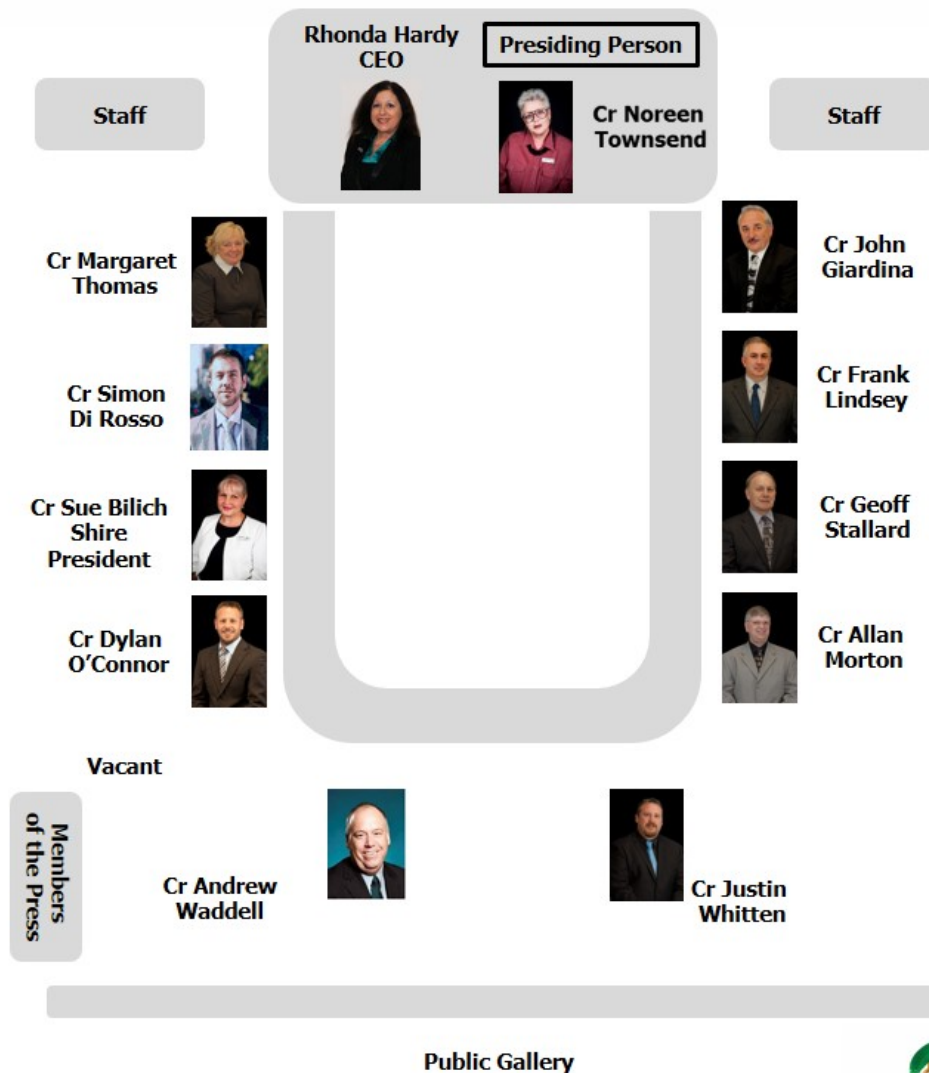


INFORMATION FOR THE PUBLIC ATTENDING COMMITTEE OR COUNCIL MEETINGS

Welcome to this evening's meeting. The following information is provided on the meeting and matters which may affect members of the public.

If you have any queries related to procedural matters, please contact a member of staff.

Council Chambers – Seating Layout



Standing Committee Meetings – Procedures

1. Standing Committees are open to the public, except for Confidential Items listed on the Agenda.
2. Shire of Kalamunda Standing Committees have a membership of all 12 Councillors.
3. Unless otherwise advised a Standing Committee makes recommendations only to the next scheduled Ordinary Council Meeting.
4. Members of the public who are unfamiliar with meeting proceedings are invited to seek advice prior to the meeting from a Shire Staff Member.
5. Members of the public are able to ask questions at a Standing Committee Meeting during Public Question Time. The questions should be related to the purposes of the Standing Committee.
6. Members of the public wishing to make a comment on any Agenda item may request to do so by advising staff prior to commencement of the Standing Committee Meeting.
7. Comment from members of the public on any item of the Agenda is usually limited to three minutes and should address the Recommendations at the conclusion of the report.
8. To facilitate the smooth running of the meeting, silence is to be observed in the public gallery at all times except for Public Question Time.
9. All other arrangements are in general accordance with Council's Standing Orders, the Policies and decision of person chairing the Committee Meeting.

Emergency Procedures

Please view the position of the Exits, Fire Extinguishers and Outdoor Assembly Area as displayed on the wall of Council Chambers.

In case of an emergency follow the instructions given by Council Personnel.

We ask that you do not move your vehicle as this could potentially block access for emergency services vehicles.

Please remain at the assembly point until advised it is safe to leave.

INDEX

1.0	OFFICIAL OPENING.....	6
2.0	ATTENDANCE, APOLOGIES AND LEAVE OF ABSENCE PREVIOUSLY APPROVED.....	6
3.0	PUBLIC QUESTION TIME	6
4.0	PETITIONS/DEPUTATIONS.....	6
5.0	CONFIRMATION OF MINUTES OF PREVIOUS MEETING	6
6.0	ANNOUNCEMENTS BY THE PRESIDING MEMBER WITHOUT DISCUSSION	6
7.0	MATTERS FOR WHICH MEETING MAY BE CLOSED	6
8.0	DISCLOSURE OF INTERESTS.....	6
9.0	REPORTS TO COUNCIL	7
	27. DEBTORS AND CREDITORS REPORT FOR THE PERIOD ENDED 31 JULY 2015	8
	28. RATES DEBTORS REPORT FOR THE PERIOD ENDED 31 JULY 2015.....	47
	29. QUARTERLY PROGRESS REPORT – APRIL - JUNE 2015	52
	30. SHIRE OF KALAMUNDA STANDING ORDERS LOCAL LAW.....	57
	31. NAMING OF THE NEW FORRESTFIELD SKATE PARK.....	62
	32. KALAMUNDA PERFORMING ARTS CENTRE – LICENCE AGREEMENT	66
10.0	MOTIONS OF WHICH PREVIOUS NOTICE HAS BEEN GIVEN.....	70
11.0	QUESTIONS BY MEMBERS WITHOUT NOTICE.....	70
12.0	QUESTIONS BY MEMBERS OF WHICH DUE NOTICE HAS BEEN GIVEN	70
13.0	URGENT BUSINESS APPROVED BY THE PRESIDING MEMBER OR BY DECISION	70
14.0	MEETING CLOSED TO THE PUBLIC	70
15.0	CLOSURE	70

AGENDA

1.0 OFFICIAL OPENING

2.0 ATTENDANCE, APOLOGIES AND LEAVE OF ABSENCE PREVIOUSLY APPROVED

2.1 Chief Executive Officer, Rhonda Hardy, Apology.

3.0 PUBLIC QUESTION TIME

A period of not less than 15 minutes is provided to allow questions from the gallery on matters relating to the functions of this Committee. For the purposes of Minuting, these questions and answers will be summarised.

4.0 PETITIONS/DEPUTATIONS

5.0 CONFIRMATION OF MINUTES OF PREVIOUS MEETING

5.1 That the Minutes of the Corporate & Community Services Committee Meeting held on 15 June 2015, as published and circulated, are confirmed as a true and accurate record of the proceedings.

Moved:

Seconded:

Vote:

Statement by Presiding Member

"On the basis of the above Motion, I now sign the Minutes as a true and accurate record of the meeting of 15 June 2015".

6.0 ANNOUNCEMENTS BY THE PRESIDING MEMBER WITHOUT DISCUSSION

7.0 MATTERS FOR WHICH MEETING MAY BE CLOSED

7.1 Nil.

8.0 DISCLOSURE OF INTERESTS

8.1 Disclosure of Financial and Proximity Interests

- a. Members must disclose the nature of their interest in matters to be discussed at the meeting. (Section 5.65 of the *Local Government Act 1995*.)
- b. Employees must disclose the nature of their interest in reports or advice when giving the report or advice to the meeting. (Section 5.70 of the *Local Government Act 1995*.)

8.2 Disclosure of Interest Affecting Impartiality

- a. Members and staff must disclose their interest in matters to be discussed at the meeting in respect of which the member or employee had given or will give advice.

9.0 REPORTS TO COUNCIL

Please Note: declaration of financial/conflict of interests to be recorded prior to dealing with each item.

Declaration of financial / conflict of interests to be recorded prior to dealing with each item.

27. Debtors and Creditors Report for the Period Ended 31 July 2015

Previous Items	N/A
Responsible Officer	Director Corporate Services
Service Area	Finance
File Reference	FI-CRS-002
Applicant	N/A
Owner	N/A

Attachment 1	Creditors Payment Listing for the month of July 2015
Attachment 2	Summary of Debtors for the month of July 2015
Attachment 3	Summary of Creditors for the month of July 2015

PURPOSE

1. To receive the monthly report on creditors payment listings for the month of July 2015 (Attachment 1).
2. To receive the monthly report on debtors and creditors (Attachments 2 and 3)

BACKGROUND

3. Council has requested reports detailing outstanding debtors and creditors on a monthly basis.

DETAILS

Debtors

4. Invoices over 30 days total \$65,469.31, excluding trust balances, debts of significance are:
 - Forrestfield United, \$3,895.88, loan;
 - Kalamunda & Districts Netball, \$3,270.88, operating expenses;
 - Kalamunda Performers, \$3,095.00, hall hire;
 - Shire of Corrigin, \$3,302.20, shared services;
 - Zig Zag Café, \$5,102.06, lease / operating expenses; and
 - Miscellaneous Debtors, \$28,655.45, hall hire / operating expenses – mainly due to two week delay in sending out invoices.
5. Invoices over 60 days total \$ 9,817.36, debts of significance are:
 - Kalamunda & Canning Rugby League Club, \$3,388.07, operating expenses;
 - Kalamunda Cricket Club, \$1,256.24, operating expenses; and
 - Zig Zag Café, \$4,810.01, lease / operating expenses
6. Invoices over 90 days total \$8,043.40, excluding trust balances, debts of significance are:
 - Kalamunda Cricket Club. \$3,479.33, loan / operating expenses

Creditors

7. Payments totalling \$4,574,235.97 were made during the month of July 2015. Standard payment terms are 30 days from the end of the month, with local businesses and contractors on 14 day terms.
8. Significant Municipal payments made in the month were:

Supplier	Purpose	\$
Australian Tax Office	PAYG payments	348,881.69
Beaver Tree services	Tree pruning services – various locations	81,434.99
DMC Cleaning	Cleaning services – various locations	64,250.74
MPK Tree Services	Tree Removal / Branch Pruning at various locations	68,710.84
Hill Top Group Pty	Building Maintenance for various buildings and progress payment for construction of new Hartfield Park Pump Room	53,534.58
Granotek Contracting	Skatepark construction – Hartfield Park Recreation Centre – 2 nd Claim	183,150.00
Eastern Metropolitan Regional Council	Domestic/Waste Charges and disposal fees	325,168.66
Grimes Contracting Pty Ltd	Repairs on various playgrounds and supply and install of new playground at Peter Thiel Park, Lesmurdie	70,794.16
Kalamunda Electrics	Electrical repairs/maintenance for various locations including upgrades on various facilities	73,283.71
LGIS Insurance Broking Services	Insurance renewals 2015/2016 – 1 st Tranche	557,588.25
Perth Waste Pty Ltd	Weekly collection and disposal of waste services	332,171.23
Electricity Networks Corp T/A Western Power	Commercial supply upgrade – 199 Hale Rd	69,325.00
Lightforce Asset Pty Ltd T/A Erections WA	Supply and install of W Beam Guardrail – Mundaring Weir Road	107,230.00
Synergy	Power charges – various locations	156,536.53
Telstra Corporation	Telephone expenses	69,662.34
Western Australia Treasury Corporation	Loan instalments – Loan no. 221 and 226 including guarantee fee	176,777.08
WA Local Government Superannuation Plan	Superannuation contributions	189,585.14

9. These payments total \$2,928,085.96 and represent 64% of all payments for the month.

Payroll

10. Salaries are paid in fortnightly cycles. A total of \$1,150,680.81 was paid in net salaries for the month of July 2015.
11. Details are provided in (Attachment 1) after the creditor's payment listing.

Trust Account Payments

12. The Trust Accounts maintained by the Shire relate to the following types:
- CELL 9 Trust
 - POS Trust
 - BCITF Levy
 - Building Licence Levy
 - Unclaimed Monies
13. The following payment was made from the Trust Accounts in the month of July 2015.

BCITF Levy		Amount (\$)
Date	Description	
15/07/2015	Building & Construction Levies – June 2015	19,516.45

STATUTORY AND LEGAL CONSIDERATIONS

14. In accordance with the requirements of the *Local Government (Financial Management) Regulations 1996 (Regulation 13)* a list of accounts paid by the Chief Executive Officer is to be prepared each month and presented in the manner required as per the Regulation.

POLICY CONSIDERATIONS

15. Nil.

COMMUNITY ENGAGEMENT REQUIREMENTS

16. Nil.

FINANCIAL CONSIDERATIONS

17. Nil.

STRATEGIC COMMUNITY PLAN

Strategic Planning Alignment

18. *Kalamunda Advancing: Strategic Community Plan to 2023*

OBJECTIVE 6.8 - To ensure financial sustainability through the implementation of effective financial management, systems and plans.

Strategy 6.8.4 Provide effective financial services to support the Shire's operations and to meet sustainability planning, reporting and accountability requirements.

SUSTAINABILITY

Social Implications

19. Nil.

Economic Implications

20. Nil.

Environmental Implications

21. Nil.

RISK MANAGEMENT CONSIDERATIONS

Debtors

22.

Risk	Likelihood	Consequence	Rating	Action/Strategy
The Shire is exposed to the potential risk of the debtor failing to make payments resulting in the disruption of cash flow.	Possible	Minor	Medium	Ensure debt collections is rigorously managed.

Creditors

23.

Risk	Likelihood	Consequence	Rating	Action/Strategy
Adverse credit records due to the Shire defaulting on creditor.	Possible	Minor	Medium	Ensure all disputes are resolved in a timely manner.

OFFICER COMMENT

24. Nil.

Voting Requirements: Simple Majority

OFFICER RECOMMENDATION (C&C 27/2015)

That Council:

1. Receives the list of payments made from the Municipal Accounts in July 2015 (Attachment 1) in accordance with the requirements of the *Local Government (Financial Management) Regulations 1996 (Regulation 12)*.
2. Receives the list of payments made from the Trust Accounts in July 2015 as noted in point 13 above in accordance with the requirements of the *Local Government (Financial Management) Regulations 1996 (Regulation 12)*.
3. Receives the outstanding debtors (Attachment 2) and creditors (Attachment 3) reports for the month of July 2015.

Moved:

Seconded:

Vote:

Attachment 1

Chq/EFT	Date	Name	Description	Amount
852	26/06/2015	EASIFLEET MANAGEMENT	STAFF CONTRIBUTIONS TO NOVATED / OPERATING LEASING	3466.53
853	01/07/2015	AUSTRALIAN TAXATION OFFICE	TAXATION	173343.19
854	01/07/2015	WESTERN AUSTRALIAN TREASURY CORPORATION	LOAN # 226 FIXED COMPONENT	43212.09
855	03/07/2015	LES MILLS AUSTRALIA	MONTHLY LICENCE FEE	1030.56
856	09/07/2015	IINET TECHNOLOGIES PTY LTD	INTERNET ACCESS	870.99
857	09/07/2015	FLEETCARE PTY LTD	STAFF CONTRIBUTIONS TO NOVATED / OPERATING LEASING	4288.08
858	13/07/2015	COMMONWEALTH BANK - BUSINESS CARD	BUSINESS CORPORATE CARD - VARIOUS COSTS HACC ACTIVITY OFFICER - \$207.40 EVENTS OFFICER - \$52.00 HACC ACTIVITY OFFICER - \$1320.50 LIBRARY SERVICES TEAM LEADER - \$2689.02 HACC ACTIVITY OFFICER - \$635.78 BUILDING MAINTENANCE OFFICER - \$95.60 HACC ACTIVITY OFFICER - \$148.38 FUNCTIONS CO-ORDINATOR - \$3063.99 CO-ORDINATOR PROCUREMENT - \$7278.09 HACC ACTIVITY OFFICER - \$45.00 HACC ACTIVITY OFFICER - \$496.85 BUILDING MAINTENANCE OFFICER - \$619.62 MANAGER HR - \$2021.11 DAY CENTRE CO-ORDINATOR - \$298.00	18971.34
859	15/07/2015	AUSTRALIAN TAXATION OFFICE	TAXATION	175538.50
860	17/07/2015	WESTERN AUSTRALIAN TREASURY CORPORATION	LOAN #221 FIXED COMPONENT	131831.14
861	17/07/2015	SG FLEET AUSTRALIA PTY LTD	MONTHLY LEASE FEES	3824.03
EFT43784	02/07/2015	KALAMUNDA ACCIDENT REPAIR CENTRE	INSURANCE EXCESS FOR REPAIRS TO VEHICLE	1256.23
EFT43785	02/07/2015	STYLECORP CORPORATE WEAR	SUPPLY OF UNIFORM FOR VARIOUS STAFF MEMBERS	1992.65

Chq/EFT	Date	Name	Description	Amount
EFT43786	02/07/2015	WEX AUSTRALIA PTY LTD - WRIGHT EXPRESS FUEL CARDS AUSTRALIA LTD	FUEL - PERIOD ENDING 29/06/15	4141.23
EFT43787	02/07/2015	WRITINGWA	SUBSCRIPTION RENEWAL FOR 2015 / 2016	135.00
EFT43788	02/07/2015	SHAWSETT TRAINING PTY LTD	REGISTRATION FOR 12 STAFF TO ATTEND FIRST AID AND DRIVER TRAINING FOR BUSH FIRE BRIGADE	1324.00
EFT43789	02/07/2015	ACE CINEMA - MIDLAND	SUPPLY OF 2 X 5 ADULT CINEMA TICKET BOOKS TOTAL 10 TICKETS	130.00
EFT43790	02/07/2015	NEVERFAIL SPRINGWATER LTD (KALA LIB)	BOTTLED WATER SUPPLIES / MAINTENANCE	16.45
EFT43791	02/07/2015	JB HI-FI MIDLAND	ELECTRICAL SUPPLIES	577.80
EFT43792	02/07/2015	KALAMUNDA GLASS & WINDSCREENS ON WHEELS	GLASS REPAIRS / MAINTENANCE FOR VARIOUS LOCATIONS	4232.65
EFT43793	02/07/2015	FIRE AND SAFETY WA	FIRE PROTECTION WEAR / SUPPLIES	322.17
EFT43794	02/07/2015	CABCHARGE AUSTRALIA LIMITED	CABCHARGE FEES	124.52
EFT43795	02/07/2015	NEVERFAIL SPRINGWATERLTD (FORRESTFIELD LIB)	BOTTLED WATER SUPPLIES / MAINTENANCE	16.45
EFT43796	02/07/2015	PICTON PRESS	PRINTING OF BROCHURES FOR VARIOUS EVENTS	4583.40
EFT43797	02/07/2015	THE PLANNING GROUP WA PTY LTD	PROFESSIONAL PLANNING SERVICES FOR VARIOUS LOCATIONS	1100.00
EFT43798	02/07/2015	VE GRAPHICS PTY LTD	SUPPLY OF BANNERS FOR VARIOUS EVENTS	198.00
EFT43799	02/07/2015	TOP OF THE LADDER GUTTER CLEANING	GUTTER CLEANING SERVICES FOR VARIOUS LOCATIONS	946.00
EFT43800	02/07/2015	AUSTRALIAN TRAINING MANAGEMENT	REGISTRATION FOR STAFF FOR VARIOUS TRAINING COURSES	9600.00
EFT43801	02/07/2015	PARAMOUNT SECURITY SERVICES	SECURITY SERVICES FOR IN THE MIX YOUTH CONCERT	227.70
EFT43802	02/07/2015	LESCHEN JOY WATSON	TRAVEL COMMUNITY VISITORS SCHEME REFUND	68.00
EFT43803	02/07/2015	ROCCO & ANGELA TRIMBOLI	RATES REFUND	107.12
EFT43804	02/07/2015	IAN GALLAGHER	FOOTPATH DEPOSIT REFUND	1000.00
EFT43805	02/07/2015	IRENE GLASSON	REFUND OF 50% OF SPECIAL CLEANING CHARGE	49.50
EFT43806	02/07/2015	HELEN TAYLOR	RATES REFUND	230.00
EFT43807	02/07/2015	MICHAEL WILLIAM CASEY	FOOTPATH DEPOSIT REFUND	1500.00
EFT43808	02/07/2015	ANDREW CODE	TRAVEL COMMUNITY VISITORS SCHEME REFUND	45.00
EFT43809	02/07/2015	BENJAMIN THACKRAY	TRAVEL COMMUNITY VISITORS SCHEME REFUND	296.00

Chq/EFT	Date	Name	Description	Amount
EFT43810	02/07/2015	KALAMUNDA RSL SUB BRANCH	CONTRIBUTION FOR 6 MEMORIAL PLAQUES AT STIRK PARK	1500.00
EFT43811	02/07/2015	DENNIS EDWARD BOHIN	RATES REFUND	500.00
EFT43812	02/07/2015	GILLIAN GATES	KEY BOND REFUND	50.00
EFT43813	02/07/2015	BOGDAN T & HEATHER W PALMOWSKI	FOOTPATH DEPOSIT REFUND	450.00
EFT43814	02/07/2015	REDMOND TRANSPORT	RATES REFUND	2489.92
EFT43815	02/07/2015	CLIFF CHRISTENSEN	HALL AND KEY BOND REFUND	1050.00
EFT43816	02/07/2015	WA LOCAL GOVERNMENT SUPERANNUATION PLAN	SUPERANNUATION CONTRIBUTIONS	96760.37
EFT43817	02/07/2015	SHIRE OF KALAMUNDA STAFF SOCIAL CLUB	PAYROLL DEDUCTIONS	348.00
EFT43818	02/07/2015	CHILD SUPPORT AGENCY	PAYROLL DEDUCTIONS	575.68
EFT43819	02/07/2015	BUNNINGS BUILDING SUPPLIES	HARDWARE SUPPLIES FOR VARIOUS LOCATIONS	2628.84
EFT43820	02/07/2015	KALAMUNDA TOYOTA	PLANT / VEHICLE PARTS	419.42
EFT43821	02/07/2015	MCLEODS BARRISTERS & SOLICITORS	LEGAL EXPENSES	1489.59
EFT43822	02/07/2015	SESCO SECURITY CO	SECURITY MONITORING SERVICES FOR VARIOUS LOCATIONS	231.00
EFT43823	02/07/2015	LANDGATE - VALUATIONS	VALUATIONS FOR VARIOUS LOCATIONS	640.16
EFT43824	02/07/2015	WALKERS HARDWARE (MITRE 10)	HARDWARE SUPPLIES	272.50
EFT43825	02/07/2015	KEEP AUSTRALIA BEAUTIFUL COUNCIL	SUPPLY OF ROADSIDE LITTER BAGS	1543.68
EFT43826	02/07/2015	DOMUS NURSERY	GARDEN SUPPLIES FOR VARIOUS LOCATIONS	4125.44
EFT43827	02/07/2015	MAJOR MOTORS PTY LTD	PLANT / VEHICLE PARTS	1222.08
EFT43828	02/07/2015	ALSCO LINEN SERVICE	LINEN HIRE / LAUNDRY SERVICES	379.75
EFT43829	02/07/2015	BRADOCK PODIATRY SERVICES PTY LTD	PODIATRY SERVICES AT JACK HEALEY CENTRE	536.49
EFT43830	02/07/2015	DAYNITE TOWING SERVICE (WA) PTY LTD (FORMERLEY MOBITOW PTY LTD)	TOWING SERVICES	352.00
EFT43831	02/07/2015	LINDLEY CONTRACTING	PLUMBING REPAIRS / MAINTENANCE FOR VARIOUS LOCATIONS	16643.00
EFT43832	02/07/2015	KALA BOB KATS PTY LTD	PLANT EQUIPMENT AND OPERATOR HIRE FOR VARIOUS LOCATIONS	834.90
EFT43833	02/07/2015	STONETRADERS PTY LTD	GARDEN / RESERVE SUPPLIES	1040.00
EFT43834	02/07/2015	GRONBEK SECURITY	SECURITY KEY SERVICES TO VARIOUS LOCATIONS	273.06

Chq/EFT	Date	Name	Description	Amount
EFT43835	02/07/2015	GRIMES CONTRACTING PTY LTD	CONTRACTOR BUILDING MAINTENANCE FOR VARIOUS BUILDINGS	17148.12
EFT43836	02/07/2015	BGC ASPHALT	ROAD MATERIALS FOR VARIOUS LOCATIONS	842.30
EFT43837	02/07/2015	HILL TOP TROPHIES (MILPRO WA)	SUPPLY OF NAME BADGES	159.50
EFT43838	02/07/2015	BRICK CONCEPTS	CROSSOVER MAINTENANCE / REPAIRS FOR VARIOUS LOCATIONS	858.00
EFT43839	02/07/2015	FOODWORKS FRESH FORRESTFIELD	GROCERY SUPPLIES	1255.69
EFT43840	02/07/2015	IT VISION	REGISTRATION OF VARIOUS TRAINING COURSES FOR STAFF	1390.40
EFT43841	02/07/2015	TL ENGINEERING (AUST) PTY LTD	PLANT / VEHICLE PARTS	258.50
EFT43842	02/07/2015	LO-GO APPOINTMENTS	HIRE OF TEMPORARY STAFF FOR DEPOT / ADMIN	9719.34
EFT43843	02/07/2015	GREEN SKILLS (ECOJOBS)	LABOUR ASSISTANCE FOR TREE PLANTING	2277.00
EFT43844	02/07/2015	CRABBS KALAMUNDA (IGA)	GROCERY SUPPLIES	291.69
EFT43845	02/07/2015	STAGE FX	TECHNICIAN SERVICES FOR VARIOUS EVENTS	7656.00
EFT43846	02/07/2015	LITTLE LOADS	GARDEN / VERGE SUPPLIES FOR VARIOUS LOCATIONS	178.00
EFT43847	02/07/2015	SWAN EVENT HIRE	EQUIPMENT HIRE FOR VARIOUS EVENTS	6641.38
EFT43848	02/07/2015	TOTAL EDEN PTY LTD	INSTALLATION, TESTING & COMMISSIONING OF THE TRANSFER PUMP AND PIPE LINE FOR THE HARTFIELD PARK MANAGED AQUIFER RECHARGE PROJECT AND SUPPLY OF RETICULATION PARTS	20010.76
EFT43849	02/07/2015	FORRESTFIELD NEWSPAPERS & MAGAZINES DELIVERY	NEWSPAPERS / MAGAZINES DELIVERIES FOR VARIOUS LOCATIONS	82.55
EFT43850	02/07/2015	J CORP PTY LTD	FOOTPATH DEPOSIT REFUNDS	5500.00
EFT43851	02/07/2015	GHD PTY LTD	ENGINEERING, ARCHITECTURE & ENVIRONMENTAL CONSULTING SERVICES	7150.00
EFT43852	02/07/2015	C Y BOBCATS	PLANT EQUIPMENT AND OPERATOR HIRE FOR VARIOUS LOCATIONS	990.00
EFT43853	02/07/2015	HILL TOP GROUP PTY	CONTRACTOR BUILDING MAINTENANCE FOR VARIOUS BUILDINGS	51463.83
EFT43854	02/07/2015	COMMUNITY NEWSPAPER GROUP LTD	ADVERTISING FOR VARIOUS JOBS AND EVENTS	4244.83
EFT43855	02/07/2015	KALAMUNDA COMMUNITY RADIO	CATERING FOR PLANTS FOR RESIDENTS EVENT 2015	660.00

Chq/EFT	Date	Name	Description	Amount
EFT43856	02/07/2015	PERRY ENVIRONMENTAL CONTRACTING	WEED CONTROL AT VARIOUS LOCATIONS	4703.50
EFT43857	02/07/2015	BIG W (AR W1.C3.U.07)	LIBRARY SUPPLIES	501.72
EFT43858	02/07/2015	SEAN & KELLI PETERS	FOOTPATH DEPOSIT REFUND	1500.00
EFT43859	02/07/2015	PETER CLARK - PIANO TUNER	MAINTENANCE / REPAIRS TO PIANOS IN VARIOUS SHIRE BUILDINGS	330.00
EFT43860	02/07/2015	DIEBACK TREATMENT SERVICES	DIEBACK TREATMENT SERVICES	5960.00
EFT43861	02/07/2015	FOOD TECHNOLOGY SERVICES PTY LTD	HIRE OF TEMPORARY STAFF FOR HEALTH DEPARTMENT	2652.10
EFT43862	02/07/2015	ATI-MIRAGE TRAINING SOLUTIONS	REGISTRATION FOR 1 STAFF TO ATTEND EXCEL 2013 INTERMEDIATE COURSE	299.00
EFT43863	02/07/2015	TACTILE INDICATORS PTY LTD	SUPPLY OF TACTILE INDICATORS FOR THE SCOTT RESERVE VIEWING PLATFORM	1308.00
EFT43864	02/07/2015	CONFECT - EXPRESS	KIOSK SUPPLIES FOR HARTFIELD RECREATION CENTRE	305.75
EFT43865	02/07/2015	BRIAN R & ANNE E GORDON	CROSSOVER CONTRIBUTION	400.00
EFT43866	02/07/2015	HILLS GOURMET	CATERING SUPPLIES	828.20
EFT43867	02/07/2015	SPECIALISED SECURITY SHREDDING	SECURE DOCUMENT DISPOSAL BIN REMOVAL AND REPLACEMENT	55.00
EFT43868	02/07/2015	CEDAR HOMES	FOOTPATH DEPOSIT REFUND	1000.00
EFT43869	02/07/2015	SIGN-A -RAMA	SIGNAGE AND INSTALLATION FOR HARTFIELD PARK	1474.00
EFT43870	02/07/2015	WOOLWORTHS LIMITED	GROCERY SUPPLIES	222.45
EFT43871	02/07/2015	FORRESTFIELD TENNIS CLUB (INC)	FORRESTFIELD TENNIS CLUB HIRE FEES FROM HARTFIELD PARK REC CTR 01/06/15 - 25/06/15	32.00
EFT43872	02/07/2015	MAIDA VALE DELIVERY ROUND	PAPER AND MAGAZINES DELIVERIES FOR HIGH WYCOMBE LIBRARY	50.80
EFT43873	02/07/2015	EASTERN REGION SECURITY	SECURITY SERVICES TO VARIOUS SHIRE BUILDINGS	1610.89
EFT43874	02/07/2015	GLENDA DAWN CHARLTON (PODIATRY)	PODIATRY SERVICES AT JACK HEALEY CENTRE	1521.23
EFT43875	02/07/2015	GREAT AUSSIE PATIOS	SUPPLY AND INSTALLATION OF LOUVRE PANELS AT THE STIRK PARK TOILET BLOCK	2700.00
EFT43876	02/07/2015	SECURE TRAFFIC	TRAFFIC MANAGEMENT FOR VARIOUS LOCATIONS	13321.00
EFT43877	02/07/2015	CASTLEDINE & CASTLEDINE DESIGNERS	DESIGN / ARTWORK & PRINTING OF VARIOUS ITEMS	3278.00
EFT43878	02/07/2015	ANIES CLARENC	HALL BOND REFUND LESS HALL HIRE FEES STILL OWED	81.20
EFT43879	02/07/2015	JONATHAN & KAREN MOFFITT	FOOTPATH DEPOSIT REFUND	1500.00

Chq/EFT	Date	Name	Description	Amount
EFT43880	02/07/2015	AUSTRALIAN SUPERANNUATION	SUPERANNUATION CONTRIBUTIONS	1961.28
EFT43881	02/07/2015	REST SUPERANNUATION	SUPERANNUATION CONTRIBUTIONS	2222.10
EFT43882	02/07/2015	WARDEN CONSTRUCTION (WA) PTY LTD	FOOTPATH DEPOSIT REFUNDS	3000.00
EFT43883	02/07/2015	JWH GROUP PTY LTD	FOOTPATH DEPOSIT REFUND	1000.00
EFT43884	02/07/2015	AMP RETIREMENT SAVINGS ACCOUNT	SUPERANNUATION CONTRIBUTIONS	219.36
EFT43885	02/07/2015	CBUS SUPERANNUATION	SUPERANNUATION CONTRIBUTIONS	459.94
EFT43886	02/07/2015	ROSE SMART	MAINTAIN ROSE BEDS AT VARIOUS LOCATIONS	649.00
EFT43887	02/07/2015	BEST CONSULTANTS PTY LTD	ELECTRICAL CONSULTING SERVICES FOR VARIOUS LOCATIONS	8783.50
EFT43888	02/07/2015	KALAMUNDA MEN'S SHED INC	PARKING MANAGEMENT AT PLANTS FOR RESIDENTS PROGRAM 2015	660.00
EFT43889	02/07/2015	PETER TUCATS SUPERANNUATION FUND	SUPERANNUATION CONTRIBUTIONS	3219.72
EFT43890	02/07/2015	COGNET NOMINEES PTY LTD ACF MAP SUPER FUND	SUPERANNUATION CONTRIBUTIONS	90.45
EFT43891	02/07/2015	NEVERFAIL SPRINGWATER LTD (PETER ANDERTON CEN)	BOTTLED WATER SUPPLIES / MAINTENANCE	51.40
EFT43892	02/07/2015	AMP SUPER LEADER	SUPERANNUATION CONTRIBUTIONS	135.01
EFT43893	02/07/2015	KRISTIE BEVERIDGE	HALL AND KEY BOND REFUND	350.00
EFT43894	02/07/2015	NEVERFAIL SPRINGWATER LTD (ZZCC)	BOTTLED WATER SUPPLIES / MAINTENANCE	14.05
EFT43895	02/07/2015	LIBERTY OIL WESTERN AUSTRALIA PTY LTD	SUPPLY OF FUEL	7558.86
EFT43896	02/07/2015	HOSTPLUS PTY LTD	SUPERANNUATION CONTRIBUTIONS	317.41
EFT43897	02/07/2015	PH CONCRETE (WA) PTY LTD	FOOTPATH MAINTENANCE / REPAIRS FOR VARIOUS LOCATIONS	19355.26
EFT43898	02/07/2015	SINGLE TRACK MINDS	KEY BOND REFUND	50.00
EFT43899	02/07/2015	JORGE'S CONTRACTING SERVICES	CLEANING SERVICE FOR PETER ANDERTON CENTRE	2179.10
EFT43900	02/07/2015	BENCHMARK MAINTENANCE SERVICES	CONTRACTOR BUILDING MAINTENANCE VARIOUS BUILDINGS	2475.00
EFT43901	02/07/2015	METROSTRATA DEVELOPMENTS PTY LTD T/A MYGEN HOMES	FOOTPATH DEPOSIT REFUND	1500.00
EFT43902	02/07/2015	PETER M EATON	RATES REFUND	1133.58
EFT43903	02/07/2015	BEAVER TREE SERVICES	TREE REMOVAL / PRUNING FOR VARIOUS LOCATIONS	69122.96

Chq/EFT	Date	Name	Description	Amount
EFT43904	02/07/2015	VISION SUPER PTY LTD	SUPERANNUATION CONTRIBUTIONS	845.42
EFT43905	02/07/2015	RYLAN PTY LTD	SUPPLY OF KERBING AT VARIOUS LOCATIONS	1452.00
EFT43906	02/07/2015	SIMONE CAIN	KEY BOND REFUND	50.00
EFT43907	02/07/2015	SIMSAI CONSTRUCTION GROUP PTY LTD	FOOTPATH DEPOSIT REFUND	1500.00
EFT43908	02/07/2015	OZWIRE ELECTRICAL PTY LTD	SUPPLY AND INSTALLATION OF CARPARK AND AREA LIGHTING AT ZIG ZAG CULTURAL CENTRE AND KALAMUNDA LIBRARY	57145.00
EFT43909	02/07/2015	PORTICO NOMINEES PTY LTD	FOOTPATH DEPOSIT REFUND	1200.00
EFT43910	02/07/2015	NATALIE CALDWELL	HALL AND KEY BOND REFUND	555.00
EFT43911	02/07/2015	SCHOLASTIC AUSTRALIA PTY LTD	HALL AND KEY BOND REFUND AND OF VENUE HIRE BOOKING CANCELLED	911.75
EFT43912	02/07/2015	RHONDA HARDY	REFUND OF EMPLOYMENT CONTRACT ALLOWANCE	526.10
EFT43913	02/07/2015	TAMARA WILKES-JONES	REIMBURSEMENT OF VARIOUS COSTS	210.33
EFT43914	02/07/2015	PERTH SPECIAL CHILDREN'S CHRISTMAS PARTY	ADVERTISING FOR SPONSORSHIP SUPPORT FOR THE PERTH SPECIAL CHILDRENS CHRISTMAS PARTY	350.00
EFT43915	02/07/2015	EYEZON PTY LTD (WHAT'S ON)	ZZCC ADS - 1/2 PAGE PERTH HILLS SPREAD - IN WHAT'S ON	449.00
EFT43916	02/07/2015	ECONOMIC DEVELOPMENT AUSTRALIA (EDA)	LOCAL GOVERNMENT CONTRIBUTION - SERVICE AGREEMENT BETWEEN EDA LIMITED AND RDA PERTH COMMITTEE FOR ECONOMIC DEVELOPMENT STRATEGY AND INFRASTRUCTURE PLAN FOR PERTH METROPOLITAN AND PEEL REGIONAL AREAS 2013 - 2031	5500.00
EFT43917	02/07/2015	HANDS-ON INFECTION CONTROL	SUPPLY OF 5 X HEPATITIS VACCINATIONS FOR VARIOUS STAFF	265.31
EFT43918	02/07/2015	KALAMUNDA ELECTRICS	ELECTRICAL REPAIRS / MAINTENANCE FOR VARIOUS LOCATIONS	68340.53
EFT43919	02/07/2015	JIVE MEDIA SOLUTIONS	UPDATES TO WWW.PERTHHILLS.COM.AU WEBSITE	27.50
EFT43920	02/07/2015	MPJ (WA) PTY LTD	SUPERANNUATION CONTRIBUTIONS	537.01
EFT43921	02/07/2015	ROCKWATER PTY LTD	CONSULTING SERVICES - WATER QUALITY MONITORING PROGRAMME	4456.49
EFT43922	02/07/2015	SENTHIL MURUGESAN	RATES REFUND	562.00

Chq/EFT	Date	Name	Description	Amount
EFT43923	02/07/2015	CANNINGTON RETRAVISION	ELECTRICAL SUPPLIES	93.06
EFT43924	02/07/2015	REFLECTIONS WINDOW CLEANING	WINDOW CLEANING SERVICES FOR FORRESTFIELD LIBRARY	330.00
EFT43925	02/07/2015	DMC CLEANING	CLEANING SERVICES FOR VARIOUS LOCATIONS	10210.85
EFT43926	02/07/2015	CUROST MILK SUPPLY	MILK SUPPLY FOR ADMINISTRATION CENTRE AND DEPOT	923.51
EFT43927	02/07/2015	AVON HILLS ENVIRONMENTAL	WEED CONTROL AT HARTFIELD PARK	8800.00
EFT43928	02/07/2015	NATURAL AREA MANAGEMENT & SERVICES	SUPPLY AND DELIVERY OF PLANTS FOR LAKE AREAS JACARANDA SPRINGS	2013.66
EFT43929	02/07/2015	WATER CORPORATION SUPERANNUATION PLAN	SUPERANNUATION CONTRIBUTIONS	267.55
EFT43930	02/07/2015	SANDRA POPLEY	HALL BOND REFUND	500.00
EFT43931	02/07/2015	A & H VALLANCE SUPERANNUATION FUND	SUPERANNUATION CONTRIBUTIONS	50.95
EFT43932	02/07/2015	MPK TREE SERVICES	TREE REMOVAL / BRANCH PRUNING AT VARIOUS LOCATIONS	59162.84
EFT43933	02/07/2015	HOCKING HERITAGE STUDIO	THE PREPARATION OF ADDITIONAL HERITAGE ASSESSMENTS FOR THE SHIRE OF KALAMUNDA MUNICIPAL HERITAGE INVENTORY	770.00
EFT43934	02/07/2015	LESMURDIE & DISTRICTS COMMUNITY ASSOCIATION INC.	CONTRIBUTION FOR LDCA PUBLIC LIABILITY INSURANCE	331.36
EFT43935	02/07/2015	UNDENOMINATIONAL CHRISTAIN FELLOWSHIP	KEY BOND REFUND	50.00
EFT43936	02/07/2015	A1 TROJAN PEST CONTROL	PEST CONTROL SERVICES FOR VARIOUS LOCATIONS	2421.00
EFT43937	02/07/2015	BELINDA KAY	SUPPLY OF CURATORIAL SERVICES	1000.00
EFT43938	02/07/2015	STAN THE TYRE MAN (STAN'S TYRE SERVICE WA)	PLANT / VEHICLE PARTS	3894.00
EFT43939	02/07/2015	TERRA SPEI PTY LTD	RATES REFUND	2225.50
EFT43940	02/07/2015	ANNA POPLAWSKA	SALE OF ARTWORK - RED DIRT COUNTRY EXHIBITION	207.20
EFT43941	02/07/2015	TWU SUPERANNUATION FUND	SUPERANNUATION CONTRIBUTIONS	212.13
EFT43942	02/07/2015	NEXXIAL ECOLOGY PTY LTD	WEED CONTROL AT VARIOUS LOCATIONS	5750.00
EFT43943	02/07/2015	FLEETCARE PTY LTD	STAFF CONTRIBUTIONS TO NOVATED / OPERATING LEASING	6582.60

Chq/EFT	Date	Name	Description	Amount
EFT43944	02/07/2015	AUSTRALIAN CATHOLIC SUPERANNUATION & RETIREMENT FUND (ACSRF)	SUPERANNUATION CONTRIBUTIONS	255.61
EFT43945	02/07/2015	D S AGENCIES PTY LTD	SUPPLY OF CUSTOM OUTDOOR SEATING AT KPAC	2570.70
EFT43946	02/07/2015	KINETIC SUPERANNUATION LTD	SUPERANNUATION CONTRIBUTIONS	193.15
EFT43947	02/07/2015	RICHMOUNT ENTERPRISES T/A BELLA CASA DEVELOPMENTS	FOOTPATH DEPOSIT REFUND	1000.00
EFT43948	02/07/2015	WORKPOWER INCORPORATED	LABOUR ASSISTANCE FOR TREE PLANTING	1212.20
EFT43949	02/07/2015	MUSIC ROCKS AUSTRALIA	IN THE MIX SCHOLARSHIP PRIZE - 1 TERM'S ENSEMBLE TUTION AT MUSIC ROCKS AUSTRALIA HQ	1485.00
EFT43950	02/07/2015	ADITI M JOGLEKAR	CROSSOVER CONTRIBUTION	400.00
EFT43951	02/07/2015	URBANECO GARDENS	HOME MAINTENANCE SERVICES	4350.00
EFT43952	02/07/2015	ELIZABETH (BETH) CRAIG	TRAVEL COMMUNITY VISITORS SCHEME REFUND	120.00
EFT43953	02/07/2015	G ROSS SUPERANNUATION PTY LTD	SUPERANNUATION CONTRIBUTIONS	76.31
EFT43954	02/07/2015	ZIRCON HOMES PTY LTD	FOOTPATH DEPOSIT REFUND	1000.00
EFT43955	02/07/2015	POWERWRAP MASTER PLAN	SUPERANNUATION CONTRIBUTIONS	286.12
EFT43956	02/07/2015	THE FULHAM FUND ACCOUNT	SUPERANNUATION CONTRIBUTIONS	273.16
EFT43957	02/07/2015	BLACKTREE TECHNOLOGY	SUPPLY OF A RADIO REPEATER FOR RANGERS AND RADIO ID AND ACCESS TO THE CENTRAL PARK REPEATER SITE FOR APRIL TO JUNE 2015	7378.80
EFT43958	02/07/2015	KARENNA WOOD	BUSINESS AND DESIGNER LIAISON FOR SPRING FESTIVAL	385.00
EFT43959	02/07/2015	HADI MONGOL	GYM MEMBERSHIP JOINING FEE REFUND	41.40
EFT43960	02/07/2015	NORTH PERSONAL SUPERANNUATION	SUPERANNUATION CONTRIBUTIONS	67.72
EFT43961	02/07/2015	DELTAWEST TRAINING	ASBESTOS AWARENESS TRAINING FOR WASTE CREW	400.00
EFT43962	02/07/2015	CRISTI JONAS	HALL, KEY BOND AND HALL HIRE FEES REFUND	429.00
EFT43963	02/07/2015	STARWEST PARTY HIRE	HIRE OF 20 DECK CHAIRS FOR IN THE MIX CONCERT 2015	245.00
EFT43964	02/07/2015	FACILITATRIX	MEDIATION SERVICES	250.00
EFT43965	02/07/2015	PATRICIA HARTLEY	SALE OF ARTWORK - RED DIRT COUNTRY EXHIBITION	560.00
EFT43966	02/07/2015	MALINDA KANONGATAA	TRAVEL COMMUNITY VISITORS SCHEME REFUND	37.50
EFT43967	02/07/2015	SUZY FRENCH ART	SALES OF ARTWORK - KALAMUNDA TO KIMBERLEY EXHIBITION	378.00

Chq/EFT	Date	Name	Description	Amount
EFT43968	02/07/2015	GRANOTEK CONTRACTING	PROGRESS CLAIM 2 - CONSTRUCTION OF FORRESTFIELD SKATE PARK AT HARTFIELD PARK RECREATION CENTRE	183150.00
EFT43969	02/07/2015	BWMT SUPERANNUATION FUND	SUPERANNUATION CONTRIBUTIONS	168.31
EFT43970	02/07/2015	NIRAV SHAH	REIMBURSEMENT OF VARIOUS COSTS	800.00
EFT43971	02/07/2015	MAZENOD OLD BOYS	HALL AND KEY BOND REFUND	755.00
EFT43972	02/07/2015	THE PLATINUM ZONE	HALL AND KEY BOND REFUND	455.00
EFT43973	02/07/2015	SHARNAE PAYNE	HALL AND KEY BOND REFUND	1050.00
EFT43974	02/07/2015	ADRIAN DANBY	HALL AND KEY BOND REFUND	350.00
EFT43975	15/07/2015	KALAMUNDA ACCIDENT REPAIR CENTRE	INSURANCE EXCESS FOR REPAIRS TO VEHICLE	1000.00
EFT43976	15/07/2015	STYLECORP CORPORATE WEAR	SUPPLY OF UNIFORM FOR VARIOUS STAFF MEMBERS	1702.28
EFT43977	15/07/2015	WEX AUSTRALIA PTY LTD - WRIGHT EXPRESS FUEL CARDS AUSTRALIA LTD	FUEL - PERIOD ENDING 13/07/15	4216.81
EFT43978	15/07/2015	SHAWSETT TRAINING PTY LTD	REGISTRATION FOR 8 TO ATTEND A DRIVING TRAINING COURSE	2648.00
EFT43979	15/07/2015	KALAMUNDA GLASS & WINDSCREENS ON WHEELS	GLASS REPAIRS / MAINTENANCE FOR VARIOUS LOCATIONS	51659.22
EFT43980	15/07/2015	FIRE AND SAFETY WA	FIRE PROTECTION WEAR / SUPPLIES	1050.72
EFT43981	15/07/2015	WATERCOM PTY LTD	UPDATE TO CURRENT VERSION OF DRAINS, UPDATES AND SUPPORT TO 1/12/2015	1870.00
EFT43982	15/07/2015	COLLECTOR OF PUBLIC MONIES (CENTRELINK)	CENTREPAY - TRANSACTION CHARGES - 01/06/15 - 30/06/15	71.94
EFT43983	15/07/2015	MYATTSFIELD VINEYARD & WINERY	WINE FOR VARIOUS EVENTS	537.78
EFT43984	15/07/2015	PICTON PRESS	PRINTING OF BROCHURES FOR VARIOUS EVENTS	9789.28
EFT43985	15/07/2015	ID CONSULTING PTY LTD (INFORMED DECISIONS)	PROFILE.ID, ATLAS.ID AND FORECAST.ID QUARTERLY SUBSCRIPTION FEE FOR JULY 2015 TO SEPTEMBER 2015	7755.00
EFT43986	15/07/2015	BEEES HIRE & SALES	SUPPLY GENERAL SCAFFOLD AND HIRE EQUIPMENT	556.71
EFT43987	15/07/2015	VIP CARPET AND UPHOLSTERY CLEANING SERVICE	CARPET CLEANING AT VARIOUS LOCATIONS	1568.00
EFT43988	15/07/2015	J & K HOPKINS	SUPPLY OF OFFICE FURNITURE	457.00
EFT43989	15/07/2015	CAROL ANNE CRUTE	CONSIGNMENT SUPPLIER - ZIG ZAG CULTURAL CENTRE - 01/06/15 - 30/06/15	36.40

Chq/EFT	Date	Name	Description	Amount
EFT43990	15/07/2015	DAPHNE LEMKE	TRAVEL COMMUNITY VISITORS SCHEME REFUND	15.00
EFT43991	15/07/2015	BENJAMIN THACKRAY	TRAVEL COMMUNITY VISITORS SCHEME REFUND	140.00
EFT43992	15/07/2015	MARGIT ELSE ALTMANN	TRAVEL COMMUNITY VISITORS SCHEME REFUND	108.00
EFT43993	15/07/2015	PAULINE TONKIN	FALLS FARM GARDEN REIMBURSEMENT	94.90
EFT43994	15/07/2015	WA LOCAL GOVERNMENT SUPERANNUATION PLAN	SUPERANNUATION CONTRIBUTIONS	92824.77
EFT43995	15/07/2015	SHIRE OF KALAMUNDA STAFF SOCIAL CLUB	PAYROLL DEDUCTIONS	399.00
EFT43996	15/07/2015	CHILD SUPPORT AGENCY	PAYROLL DEDUCTIONS	575.68
EFT43997	15/07/2015	AUSTRALIA POST	POSTAL EXPENSES / COUNTER BILLPAY TRANSACTION FEES	4823.35
EFT43998	15/07/2015	BUNNINGS BUILDING SUPPLIES	HARDWARE SUPPLIES FOR VARIOUS LOCATIONS	625.24
EFT43999	15/07/2015	COVS PARTS PTY LTD	PLANT / VEHICLE PARTS	2275.18
EFT44000	15/07/2015	LANDGATE	LAND ENQUIRIES FOR VARIOUS LOCATIONS	72.00
EFT44001	15/07/2015	KALAMUNDA AUTO ELECTRICS	PLANT / VEHICLE PARTS	2235.20
EFT44002	15/07/2015	KALAMUNDA TOYOTA	PLANT / VEHICLE PARTS	740.81
EFT44003	15/07/2015	MCLEODS BARRISTERS & SOLICITORS	LEGAL EXPENSES	13120.40
EFT44004	15/07/2015	LANDGATE - VALUATIONS	VALUATIONS FOR VARIOUS LOCATIONS	3908.81
EFT44005	15/07/2015	WALKERS HARDWARE (MITRE 10)	HARDWARE SUPPLIES	224.09
EFT44006	15/07/2015	MCKAY EARTHMOVING PTY LTD	PLANT EQUIPMENT AND OPERATOR HIRE FOR VARIOUS LOCATIONS	33106.45
EFT44007	15/07/2015	BORAL CONSTRUCTION MATERIALS GROUP	ROAD MATERIALS FOR VARIOUS LOCATIONS	280.50
EFT44008	15/07/2015	3 VODAFONE HUTCHISON AUSTRALIA PTY LTD	COMMUNICATION EXPENSES	2214.80
EFT44009	15/07/2015	THE WATERSHED WATER SYSTEMS	RETICULATION PARTS FOR VARIOUS RESERVES	172.26
EFT44010	15/07/2015	RAECO	STATIONERY / OFFICE SUPPLIES	124.20
EFT44011	15/07/2015	SANDGROPER SEPTICS	SEPTIC / GREASE TANK CLEAN OUT SERVICES AT VARIOUS LOCATIONS	165.00
EFT44012	15/07/2015	MAJOR MOTORS PTY LTD	PLANT / VEHICLE PARTS	288.07
EFT44013	15/07/2015	ALSCO LINEN SERVICE	LINEN HIRE / LAUNDRY SERVICES	729.11
EFT44014	15/07/2015	BRADOCK PODIATRY SERVICES PTY LTD	PODIATRY SERVICES AT JACK HEALEY CENTRE	1609.47

Chq/EFT	Date	Name	Description	Amount
EFT44015	15/07/2015	DAYNITE TOWING SERVICE (WA) PTY LTD (FORMERLEY MOBITOW PTY LTD)	TOWING SERVICES	319.00
EFT44016	15/07/2015	LINDLEY CONTRACTING	PLUMBING REPAIRS / MAINTENANCE FOR VARIOUS LOCATIONS	214.50
EFT44017	15/07/2015	KALA BOB KATS PTY LTD	PLANT EQUIPMENT AND OPERATOR HIRE FOR VARIOUS LOCATIONS	3476.55
EFT44018	15/07/2015	GRIMES CONTRACTING PTY LTD	CONTRACTOR BUILDING MAINTENANCE FOR VARIOUS BUILDINGS	53646.04
EFT44019	15/07/2015	BGC ASPHALT	ROAD MATERIALS FOR VARIOUS LOCATIONS	508.15
EFT44020	15/07/2015	WESTSIDE FIRE SERVICES	TESTING AND INSPECTION OF FIRE EQUIPMENT / SUPPLIES	925.10
EFT44021	15/07/2015	STAPLES AUSTRALIA PTY LTD(CORPORATE EXPRESS AUSTRALIA LTD)	STATIONERY / OFFICE SUPPLIES	173.25
EFT44022	15/07/2015	KALAMUNDA STATE EMERGENCY SERVICE (SES)	REIMBURSEMENT - GOODS AND SERVICES	4534.87
EFT44023	15/07/2015	HILL TOP TROPHIES (MILPRO WA)	SUPPLY OF NAME BADGES	19.25
EFT44024	15/07/2015	BRICK CONCEPTS	CROSSOVER MAINTENANCE / REPAIRS FOR VARIOUS LOCATIONS	583.00
EFT44025	15/07/2015	FOODWORKS FRESH FORRESTFIELD	GROCERY SUPPLIES	1346.83
EFT44026	15/07/2015	WA LOCAL GOVERNMENT ASSOCIATION (ADVERTISING)	ADVERTISING FOR VARIOUS JOBS / EVENTS	2458.44
EFT44027	15/07/2015	LESMURDIE SENIOR HIGH SCHOOL	CONTRIBUTION TOWARDS LESMURDIE COMMUNITY LIBRARY COSTS AS PER CONTRACT	57.80
EFT44028	15/07/2015	LO-GO APPOINTMENTS	HIRE OF TEMPORARY STAFF FOR DEPOT / ADMIN	10799.28
EFT44029	15/07/2015	GREEN SKILLS (ECOJOBS)	LABOUR ASSISTANCE FOR TREE PLANTING	2141.00
EFT44030	15/07/2015	AUSTRALIAN INSTITUTE OF MANAGEMENT	KALAMUNDA GROW PROGRAM TRAINING 2014/15	20133.06
EFT44031	15/07/2015	KALAMUNDA & DISTRICTS HISTORICAL SOCIETY	CONSIGNMENT SUPPLIER - ZIG ZAG CULTURAL CENTRE - 01/06/15 - 30/06/15	121.45
EFT44032	15/07/2015	CRABBS KALAMUNDA (IGA)	GROCERY SUPPLIES	293.54
EFT44033	15/07/2015	VENTURA HOMES PTY LTD	FOOTPATH DEPOSIT REFUND	1000.00
EFT44034	15/07/2015	WATTLE GROVE VETERINARY HOSPITAL	VETERINARY FEES	150.00

Chq/EFT	Date	Name	Description	Amount
EFT44035	15/07/2015	LITTLE LOADS	GARDEN / VERGE SUPPLIES FOR VARIOUS LOCATIONS	4326.00
EFT44036	15/07/2015	HOME GROUP WA PTY LTD	FOOTPATH DEPOSIT REFUND	1000.00
EFT44037	15/07/2015	ASHMY PTY LTD	FOOTPATH DEPOSIT REFUND	1500.00
EFT44038	15/07/2015	AUSTRALIAN LIBRARY AND INFORMATION ASSOCIATION	MEMBERSHIP RENEWAL FOR KALAMUNDA LIBRARY SERVICE 2015-16	1863.00
EFT44039	15/07/2015	HELEN ARMSTRONG & ASSOCIATES (T/AS WAXING LYRICAL CANDLES)	CONSIGNMENT SUPPLIER - ZIG ZAG CULTURAL CENTRE - 01/06/15 - 30/06/15	42.00
EFT44040	15/07/2015	SWAN EVENT HIRE	EQUIPMENT HIRE FOR VARIOUS EVENTS	9.68
EFT44041	15/07/2015	TOTAL EDEN PTY LTD	IRRIGATION DESIGN AND SPECIFICATION FOR KOSTERA RESERVE REDEVELOPMENT AND SUPPLY OF RETICUALTION PARTS	9286.21
EFT44042	15/07/2015	GRASSTREES AUSTRALIA	GARDEN AND VERGE SUPPLIES	4749.25
EFT44043	15/07/2015	DIGITAL MAPPING SOLUTIONS	GIS CONSULTING SERVICES AND INTRAMAPS SUBSCRIPTION PLAN 01/06/15 - 31/05/16	36506.00
EFT44044	15/07/2015	DEPARTMENT OF FIRE AND EMERGENCY SERVICES (DFES)	50% COST SHARING FOR THE COMMUNITY FIRE MANAGER FOR THE PERIOD 27/03/15 TO 25/06/15 AS PER THE MOU BETWEEN DFES AND THE SHIRE OF KALAMUNDA	18328.90
EFT44045	15/07/2015	GHD PTY LTD	ENGINEERING, ARCHITECTURE & ENVIRONMENTAL CONSULTING SERVICES	4070.00
EFT44046	15/07/2015	CHAMBER OF COMMERCE & INDUSTRY OF WA	MEMBERSHIP SUBSCRIPTION RENEWAL 2015 / 2016	12613.00
EFT44047	15/07/2015	C Y BOBCATS	PLANT EQUIPMENT AND OPERATOR HIRE FOR VARIOUS LOCATIONS	4800.00
EFT44048	15/07/2015	ALCHEMY TECHNOLOGY	COMPUTER SOFTWARE MAINTENANCE RENEWAL 2015/2016 AND REGISTRATION FOR ONSITE TRAINING	15671.70
EFT44049	15/07/2015	KALAMUNDA COMMUNITY GARDEN	KEY BOND REFUND	50.00
EFT44050	15/07/2015	HILL TOP GROUP PTY	CONTRACTOR BUILDING MAINTENANCE FOR VARIOUS BUILDINGS	2070.75
EFT44051	15/07/2015	PETER WATSON	TRAVEL COMMUNITY VISITORS SCHEME REFUND	132.00
EFT44052	15/07/2015	LIFTING BY DESIGN PTY LTD	PLANT / VEHICLE PARTS	781.00

Chq/EFT	Date	Name	Description	Amount
EFT44053	15/07/2015	TRAFFIC MANAGEMENT PLAN SERVICES	TRAFFIC MANAGEMENT SERVICES FOR VARIOUS LOCATIONS	2805.00
EFT44054	15/07/2015	MOIRA A COURT	CONSIGNMENT SUPPLIER - ZIG ZAG CULTURAL CENTRE - 01/06/15 - 30/06/15	14.70
EFT44055	15/07/2015	TRILOGY SERVICING PTY LTD	AIRCONDITIONING MAINTENANCE / REPAIRS FOR VARIOUS LOCATIONS	3527.63
EFT44056	15/07/2015	DEBBIE JOSE JEWELLERY	CONSIGNMENT SUPPLIER - ZIG ZAG CULTURAL CENTRE - 01/06/15 - 30/06/15	59.50
EFT44057	15/07/2015	BLAIR & ALICIA MARSH	KIDS COOKING CLUB CLASS REFUND	24.00
EFT44058	15/07/2015	KANYANA WILDLIFE REHABILITATION CENTRE INC	CONSIGNMENT SUPPLIER - ZIG ZAG CULTURAL CENTRE - 01/06/15 - 30/06/15	279.20
EFT44059	15/07/2015	PERTH TIMBER CO PTY LTD	SUPPLY OF TREE STAKES AND PLAQUE STAKES FOR COMMEMORATIVE PLANTING FOR JULY 2015	2704.58
EFT44060	15/07/2015	KRISTIE MOILER	CONSIGNMENT SUPPLIER - ZIG ZAG CULTURAL CENTRE - 01/06/15 - 30/06/15	11.06
EFT44061	15/07/2015	PERRY ENVIRONMENTAL CONTRACTING	WEED CONTROL AT VARIOUS LOCATIONS	6790.00
EFT44062	15/07/2015	DUN & BRADSTREET (AUSTRALIA) PTY LTD	DEBT COLLECTION FEES FOR RATES	17541.21
EFT44063	15/07/2015	AUSTIN COMPUTERS	SUPPLY OF COMPUTERS / ACCESSORIES	248.00
EFT44064	15/07/2015	SAI GLOBAL LTD	SUPPLY OF AUSTRALIAN STANDARDS	16.90
EFT44065	15/07/2015	CORDELL INFORMATION PTY LTD	SUPPLY OF WA BUILDING COSTS GUIDE	936.10
EFT44066	15/07/2015	BOLDSILK HOLDINGS PTY LTD	RETURN OF MAINTENANCE BOND - WAPC 146346 - LOT 31 WILLERIN MEWS MAIDA VALE	613.73
EFT44067	15/07/2015	DONNA GAHAN	CONSIGNMENT SUPPLIER - ZIG ZAG CULTURAL CENTRE - 01/06/15 - 30/06/15	112.00
EFT44068	15/07/2015	SIGN-A -RAMA	SIGNAGE SUPPLIES	1529.00
EFT44069	15/07/2015	NORZILLAH BINTI KAMAL	PART CAT REGISTRATION FEE REFUND - OVERCHARGED	40.00
EFT44070	15/07/2015	JAG DEMOLITION	FOOTPATH DEPOSIT REFUND, LESS PRIVATE WORKS EXPENSES	459.95
EFT44071	15/07/2015	ELECTRICITY NETWORKS CORP T/A WESTERN POWER	ALTERATIONS - COMMERCIAL SUPPLY UPGRADE - 199 HALE ROAD FORRESTFIELD - REFERENCE MP147640	69325.00
EFT44072	15/07/2015	WOOLWORTHS LIMITED	GROCERY SUPPLIES	149.31

Chq/EFT	Date	Name	Description	Amount
EFT44073	15/07/2015	AFFORDABLE LIVING HOMES	FOOTPATH DEPOSIT REFUND	1000.00
EFT44074	15/07/2015	FORRESTFIELD TENNIS CLUB (INC)	FORRESTFIELD TENNIS CLUB HIRE FEES FROM HARTFEILD PARK RECREATION CENTRE - 26/06/15 – 30/06/15	13.80
EFT44075	15/07/2015	HILLS GAS SUPPLY	SUPPLY OF BOTTLED GAS FOR VARIOUS LOCATIONS	100.00
EFT44076	15/07/2015	THOMAS NIIAKTON JACOBSON	FOOTPATH DEPOSIT REFUND	1000.00
EFT44077	15/07/2015	EASTERN REGION SECURITY	SECURITY SERVICES TO VARIOUS SHIRE BUILDINGS	6384.56
EFT44078	15/07/2015	GLENDA DAWN CHARLTON (PODIATRY)	PODIATRY SERVICES AT JACK HEALEY CENTRE	1335.36
EFT44079	15/07/2015	SECURE TRAFFIC	TRAFFIC MANAGEMENT FOR VARIOUS LOCATIONS	8745.00
EFT44080	15/07/2015	EASIFLEET MANAGEMENT	STAFF CONTRIBUTIONS TO NOVATED / OPERATING LEASES	8302.01
EFT44081	15/07/2015	AGED & COMMUNITY SERVICES WA INC	ACSWA MEMBERSHIP RENEWAL 2015-2016 AND REGISTRATION FOR 4 STAFF TO ATTEND THE COMMUNITY CARE FORUM	5202.45
EFT44082	15/07/2015	AUSTRALIAN SUPERANNUATION	SUPERANNUATION CONTRIBUTIONS	1906.16
EFT44083	15/07/2015	REST SUPERANNUATION	SUPERANNUATION CONTRIBUTIONS	2024.44
EFT44084	15/07/2015	MADE 4 YOU (LYGIA)	CONSIGNMENT SUPPLIER - ZIG ZAG CULTURAL CENTRE - 01/06/15 - 30/06/15	10.50
EFT44085	15/07/2015	RBD BUILDING & MAINTENANCE	FOOTPATH DEPOSIT REFUND	1500.00
EFT44086	15/07/2015	AMP RETIREMENT SAVINGS ACCOUNT	SUPERANNUATION CONTRIBUTIONS	207.35
EFT44087	15/07/2015	CBUS SUPERANNUATION	SUPERANNUATION CONTRIBUTIONS	651.89
EFT44088	15/07/2015	TAURUS HOMES	FOOTPATH DEPOSIT REFUND	1000.00
EFT44089	15/07/2015	PETER TUCATS SUPERANNUATION FUND	SUPERANNUATION CONTRIBUTIONS	279.68
EFT44090	15/07/2015	COGNET NOMINEES PTY LTD ACF MAP SUPER FUND	SUPERANNUATION CONTRIBUTIONS	98.22
EFT44091	15/07/2015	NEVERFAIL SPRINGWATER LTD (PETER ANDERTON CEN)	BOTTLED WATER SUPPLIES / MAINTENANCE	15.20
EFT44092	15/07/2015	AMP SUPER LEADER	SUPERANNUATION CONTRIBUTIONS	133.35
EFT44093	15/07/2015	BEVERLEY DUFF	TRAVEL COMMUNITY VISITORS SCHEME REFUND	30.00
EFT44094	15/07/2015	HOSTPLUS PTY LTD	SUPERANNUATION CONTRIBUTIONS	203.18
EFT44095	15/07/2015	PH CONCRETE (WA) PTY LTD	FOOTPATH MAINTENANCE / REPAIRS FOR VARIOUS LOCATIONS	682.00

Chq/EFT	Date	Name	Description	Amount
EFT44096	15/07/2015	NEW CHOICE HOMES	PLANNING APPLICATION FEE REFUND	598.40
EFT44097	15/07/2015	KOTT GUNNING LAWYERS	LEGAL EXPENSES	1211.32
EFT44098	15/07/2015	BENCHMARK MAINTENANCE SERVICES	CONTRACTOR BUILDING MAINTENANCE VARIOUS BUILDINGS	462.00
EFT44099	15/07/2015	GINA EARL	FOOTPATH DEPOSIT REFUND	1500.00
EFT44100	15/07/2015	NANCY GILLESPIE	CONSIGNMENT SUPPLIER - ZIG ZAG CULTURAL CENTRE - 01/06/15 - 30/06/15	14.00
EFT44101	15/07/2015	BEAVER TREE SERVICES	TREE REMOVAL / PRUNING FOR VARIOUS LOCATIONS	12312.03
EFT44102	15/07/2015	VISION SUPER PTY LTD	SUPERANNUATION CONTRIBUTIONS	781.31
EFT44103	15/07/2015	WEST-SURE GROUP PTY LTD	CASH IN TRANSIT SERVICES - JUNE 2015	1750.32
EFT44104	15/07/2015	PATRICIA MOSS	CONSIGNMENT SUPPLIER - ZIG ZAG CULTURAL CENTRE - 01/06/15 - 30/06/15	2.45
EFT44105	15/07/2015	KALEIDOSCOPE CRAFT KITS	DRY CLEANING / WASHING SERVICES FOR HARTFIELD PARK RECREATION CENTRE	180.00
EFT44106	15/07/2015	SHENAYE HUMMERSTON	HANDS ON SEED WORKSHOPS WITH GREEN ARMY	1050.00
EFT44107	15/07/2015	KARIN HOTCHKIN	CONSIGNMENT SUPPLIER - ZIG ZAG CULTURAL CENTRE - 01/06/15 - 30/06/15	10.50
EFT44108	15/07/2015	PETER HAYES	REFUND OF EMPLOYMENT CONTRACT ALLOWANCE	711.00
EFT44109	15/07/2015	FIRST 5 MINUTES PTY LTD	EVACUATION DRILLS AT VARIOUS LOCATIONS AND WARDEN TRAINING	1842.50
EFT44110	15/07/2015	JENNIFER DE YOUNG	VOLUNTEER TRANSPORT REIMBURSEMENT REFUND	410.00
EFT44111	15/07/2015	STRATEGEN ENVIRONMENTAL CONSULTANTS	CONSULTING SERVICES FOR FORRESTFIELD NORTH DWMS PREPARATION	412.23
EFT44112	15/07/2015	CLAIRE O'NEILL - CLAIRE'S EMBROIDERY	CONSIGNMENT SUPPLIER - ZIG ZAG CULTURAL CENTRE - 01/06/15 - 30/06/15	154.00
EFT44113	15/07/2015	RHONDA HARDY	REFUND OF EMPLOYMENT CONTRACT ALLOWANCE	468.48
EFT44114	15/07/2015	LINDA STONES	CONSIGNMENT SUPPLIER - ZIG ZAG CULTURAL CENTRE - 01/06/15 - 30/06/15	177.80
EFT44115	15/07/2015	IAN MOSS	CONSIGNMENT SUPPLIER - ZIG ZAG CULTURAL CENTRE - 01/06/15 - 30/06/15	49.00

Chq/EFT	Date	Name	Description	Amount
EFT44116	15/07/2015	PETER FALCONER	CONSIGNMENT SUPPLIER - ZIG ZAG CULTURAL CENTRE - 01/06/15 - 30/06/15	35.00
EFT44117	15/07/2015	ALDRIN DIAS	KEY BOND REFUND	50.00
EFT44118	15/07/2015	CITY OF STIRLING	MEALS ON WHEELS PROGRAM - MAY AND JUNE 2015	10474.38
EFT44119	15/07/2015	SAFE T CARD AUSTRALIA PTY LTD	MONTHLY MONITORING CHARGES FOR VARIOUS LOCATIONS	33.00
EFT44120	15/07/2015	MARY FORWARD	CONSIGNMENT SUPPLIER - ZIG ZAG CULTURAL CENTRE - 01/06/15 - 30/06/15	6.65
EFT44121	15/07/2015	HANS SCHWALB	CONSIGNMENT SUPPLIER - ZIG ZAG CULTURAL CENTRE - 01/06/15 - 30/06/15	7.00
EFT44122	15/07/2015	KALAMUNDA ELECTRICS	ELECTRICAL REPAIRS / MAINTENANCE FOR VARIOUS LOCATIONS	4943.18
EFT44123	15/07/2015	THE ARTFUL FLOWE - FELICIA LOWE	CONSIGNMENT SUPPLIER - ZIG ZAG CULTURAL CENTRE - 01/06/15 - 30/06/15	12.25
EFT44124	15/07/2015	DAVID GREEN	CONSIGNMENT SUPPLIER - ZIG ZAG CULTURAL CENTRE - 01/06/15 - 30/06/15	55.72
EFT44125	15/07/2015	MPJ (WA) PTY LTD	SUPERANNUATION CONTRIBUTIONS	537.01
EFT44126	15/07/2015	ANNIKA BALLANTYNE	HALL AND KEY BOND REFUND	350.00
EFT44127	15/07/2015	DMC CLEANING	CLEANING SERVICES FOR VARIOUS LOCATIONS	54039.89
EFT44128	15/07/2015	NICHOLAS TAYLOR PHOTOGRAPHY	CONSIGNMENT SUPPLIER - ZIG ZAG CULTURAL CENTRE - 01/06/15 - 30/06/15	25.20
EFT44129	15/07/2015	SILK ON SILK (ROSEMARY LONSDALE)	CONSIGNMENT SUPPLIER - ZIG ZAG CULTURAL CENTRE - 01/06/15 - 30/06/15	280.00
EFT44130	15/07/2015	MAVIS PASKULICH	CONSIGNMENT SUPPLIER - ZIG ZAG CULTURAL CENTRE - 01/06/15 - 30/06/15	91.00
EFT44131	15/07/2015	DEMENTIA CARE AUSTRALIA	BOND REFUND FOR THE USE OF THE SEMINAR ROOM AT THE ZIG ZAG CULTURAL CENTRE	300.00
EFT44132	15/07/2015	BEEWAX CREATIONS	CONSIGNMENT SUPPLIER - ZIG ZAG CULTURAL CENTRE - 01/06/15 - 30/06/15	13.23
EFT44133	15/07/2015	VINOD KUMAR OMPRAKASH SHARMA	HALL BOND REFUND	200.00
EFT44134	15/07/2015	WATER CORPORATION SUPERANNUATION PLAN	SUPERANNUATION CONTRIBUTIONS	267.55

Chq/EFT	Date	Name	Description	Amount
EFT44135	15/07/2015	TIERRA ECOLOGIA	CONSIGNMENT SUPPLIER - ZIG ZAG CULTURAL CENTRE - 01/06/15 - 30/06/15	191.10
EFT44136	15/07/2015	MPK TREE SERVICES	TREE REMOVAL / BRANCH PRUNING AT VARIOUS LOCATIONS	9548.00
EFT44137	15/07/2015	A1 TROJAN PEST CONTROL	PEST CONTROL SERVICES FOR VARIOUS LOCATIONS	5206.00
EFT44138	15/07/2015	NEVERFAIL SPRINGWATER LTD (ADMIN OFFICE)	BOTTLED WATER SUPPLIES / MAINTENANCE	26.85
EFT44139	15/07/2015	OFF PEN PUBLISHING - BETH BAKER	CONSIGNMENT SUPPLIER - ZIG ZAG CULTURAL CENTRE - 01/06/15 - 30/06/15	68.60
EFT44140	15/07/2015	RODRIGO A ARROYO	PLANNING APPLICATION FEE REFUND	147.00
EFT44141	15/07/2015	TWU SUPERANNUATION FUND	SUPERANNUATION CONTRIBUTIONS	212.13
EFT44142	15/07/2015	GRAHAM STIMSON	CONSIGNMENT SUPPLIER - ZIG ZAG CULTURAL CENTRE - 01/06/15 - 30/06/15	63.00
EFT44143	15/07/2015	BALLIGART - HELEN LOCK	CONSIGNMENT SUPPLIER - ZIG ZAG CULTURAL CENTRE - 01/06/15 - 30/06/15	15.40
EFT44144	15/07/2015	ACTIV PROPERTY CARE	TREE PLANTING IN WATTLE GROVE	8360.00
EFT44145	15/07/2015	AUSTRALIAN CATHOLIC SUPERANNUATION & RETIREMENT FUND (ACSRF)	SUPERANNUATION CONTRIBUTIONS	255.61
EFT44146	15/07/2015	ANGELA GILES	TRAVEL COMMUNITY VISITORS SCHEME REFUND	48.00
EFT44147	15/07/2015	LINDAS BOOKS / ROLEYSTONE COURIER	CONSIGNMENT SUPPLIER - ZIG ZAG CULTURAL CENTRE - 01/06/15 - 30/06/15	37.80
EFT44148	15/07/2015	IRENE YOUNG	CONSIGNMENT SUPPLIER - ZIG ZAG CULTURAL CENTRE - 01/06/15 - 30/06/15	12.60
EFT44149	15/07/2015	KINETIC SUPERANNUATION LTD	SUPERANNUATION CONTRIBUTIONS	190.46
EFT44150	15/07/2015	GARY TICEHURST	REFUND OF EMPLOYMENT CONTRACT ALLOWANCE	490.87
EFT44151	15/07/2015	RONALD PENDAL	VOLUNTEER TRANSPORT REIMBURSEMENT REFUND	168.00
EFT44152	15/07/2015	WORKPOWER INCORPORATED	ENVIRONMENTAL SERVICES AT KALARI DRIVE	1588.40
EFT44153	15/07/2015	HETAL HITESH KHETIA	FOOTPATH DEPOSIT REFUND	1000.00
EFT44154	15/07/2015	AUSTRALIAN FINANCIAL SECURITY AUTHORITY	VEHICLE CHECKS FOR ABANDONED VEHICLES	16.00
EFT44155	15/07/2015	URBANECO GARDENS	HOME MAINTENANCE SERVICES	4900.00

Chq/EFT	Date	Name	Description	Amount
EFT44156	15/07/2015	ANNE MARIE WHARRIE	BOND REFUND FOR THE USE OF THE GALLERY ROOM AT THE ZIG ZAG CULTURAL CENTRE	500.00
EFT44157	15/07/2015	THE LUCKY CHARM	SUPPLY AND DELIVERY OF MAGAZINES TO VARIOUS LOCATIONS	233.50
EFT44158	15/07/2015	HERB & ESSENCE	CONSIGNMENT SUPPLIER - ZIG ZAG CULTURAL CENTRE - 01/06/15 - 30/06/15	9.10
EFT44159	15/07/2015	G ROSS SUPERANNUATION PTY LTD	SUPERANNUATION CONTRIBUTIONS	62.18
EFT44160	15/07/2015	SEATADVISOR PTY LTD	JUNE 2015 TICKET SALES	199.33
EFT44161	15/07/2015	POWERWRAP MASTER PLAN	SUPERANNUATION CONTRIBUTIONS	286.12
EFT44162	15/07/2015	THE FULHAM FUND ACCOUNT	SUPERANNUATION CONTRIBUTIONS	273.16
EFT44163	15/07/2015	BLACKTREE TECHNOLOGY	SUPPLY OF ITEMS ASSOCIATED WITH RANGERS RADIO REPEATER	5610.00
EFT44164	15/07/2015	ITA GILSENAN	CONSIGNMENT SUPPLIER - ZIG ZAG CULTURAL CENTRE - 01/06/15 - 30/06/15	73.50
EFT44165	15/07/2015	NORTH PERSONAL SUPERANNUATION	SUPERANNUATION CONTRIBUTIONS	163.66
EFT44166	15/07/2015	ART FROM THE HEART PRODUCTIONS T/A BORN TO SING	KEY BOND REFUND	50.00
EFT44167	15/07/2015	HANNA INSTRUMENTS PTY LTD	SUPPLY OF RETICULATION PARTS AND METER KITS	4708.00
EFT44168	15/07/2015	SECURE PAY	SEAT ADVISOR TRANSACTION FEES	4.46
EFT44169	15/07/2015	PROPERTY COUNCIL OF AUSTRALIA	MEMBERSHIP SUBSCRIPTION RENEWAL - 01/07/15 - 30/06/16	3370.00
EFT44170	15/07/2015	ELEMENT PLASTERING	PLASTER AND RENDER AT STIRK PARK TOILETS	600.00
EFT44171	15/07/2015	KENT CORPORATION	FOOTPATH DEPOSIT REFUND	1500.00
EFT44172	15/07/2015	STONE MINISTRIES	BOND REFUND FOR THE USE OF THE SEMINAR ROOM AT THE ZIG ZAG CULTURAL CENTRE	400.00
EFT44173	15/07/2015	BWMT SUPERANNUATION FUND	SUPERANNUATION CONTRIBUTIONS	189.34
EFT44174	15/07/2015	CARLISLE CURTAIN CO	SUPPLY OF 4 CURTAINS FOR JACK HEALY CENTRE	2355.00
EFT44175	15/07/2015	BRIDGET CREANEY	RETURN OF OUTSTANDING WORKS BOND - WAPC 146706 - LOT 84 (28) NETHERWOOD ROAD HIGH WYCOMBE	12420.00
EFT44176	15/07/2015	MATTHEW THOMPSON	KEY BOND REFUND	50.00
EFT44177	15/07/2015	DAWN FLIGHT	HALL BOND REFUND	1050.00

Chq/EFT	Date	Name	Description	Amount
EFT44178	23/07/2015	BARNETTS (WA) PTY LTD	HARDWARE SUPPLIES	200.19
EFT44179	23/07/2015	STYLECORP CORPORATE WEAR	SUPPLY OF UNIFORM FOR VARIOUS STAFF MEMBERS	3093.19
EFT44180	23/07/2015	YMCA OF PERTH INC	FUNDING FOR PROVISION OF AUSTRALIA DAY 2015 ACTIVITIES AND FOR THE 50TH ANNIVERSARY CELEBRATION	8000.00
EFT44181	23/07/2015	PLANTRITE	PLANTS FOR PLANTS FOR RESIDENTS 2015	3509.74
EFT44182	23/07/2015	AUSTRALIAN TEACHING AIDS PTY LTD	LIBRARY DISPLAYS	580.80
EFT44183	23/07/2015	PFD FOOD SERVICES	KIOSK SUPPLIES FOR HARTFIELD PARK RECREATION CENTRE	98.75
EFT44184	23/07/2015	A CLASS DISPLAYS	OFFICE SUPPLIES	523.08
EFT44185	23/07/2015	SAGE CONSULTING ENGINEERS	SPORTS LIGHTING INVESTIGATIONS AT VARIOUS LOCATIONS	42460.00
EFT44186	23/07/2015	SETON AUSTRALIA PTY LTD	SAFETY EQUIPMENT / SUPPLIES	391.38
EFT44187	23/07/2015	THE PLANNING GROUP WA PTY LTD	PROFESSIONAL PLANNING SERVICES FOR VARIOUS LOCATIONS	15708.00
EFT44188	23/07/2015	CHILD EDUCATION SERVICES	LIBRARY SUPPLIES	804.60
EFT44189	23/07/2015	ENVIRONMENT HOUSE	WATER AUDITS IN THE COMMUNITY INCLUDING IMPLEMENTATION OF AUDIT RECOMMENDATIONS	7588.15
EFT44190	23/07/2015	BIDVEST FOODSERVICE	GROCERY SUPPLIES FOR PETER ANDERTON CENTRE	1308.65
EFT44191	23/07/2015	TOTALLY WORKWEAR MIDLAND	SUPPLY OF PROTECTIVE CLOTHING	633.25
EFT44192	23/07/2015	UPTEMPO DESIGN	SUPPLY OF PERTH HILLS SPRING FESTIVAL TSHIRTS	418.00
EFT44193	23/07/2015	WATS MANAGEMENT PTY LTD T/A AUSTRAFFIC WA	TRAFFIC COUNTS CLASSIFICATION AT VARIOUS LOCATIONS	1386.00
EFT44194	23/07/2015	ALLAN MORTON	COUNCILLOR ALLOWANCE - 01/07/15 - 31/07/15	2184.17
EFT44195	23/07/2015	STATE LIBRARY OF W.A.	LOST AND DAMAGED BOOKS - FORRESTFIELD LIBRARY	108.90
EFT44196	23/07/2015	WA LIBRARY SUPPLIES PTY LTD	LIBRARY / OFFICE SUPPLIES	222.50
EFT44197	23/07/2015	ECHO NEWSPAPER	ADVERTISING FOR VARIOUS JOBS / EVENTS	1760.00
EFT44198	23/07/2015	ROCLA QUARRY PRODUCTS	GARDEN / RESERVE SUPPLIES	2801.12
EFT44199	23/07/2015	EASTERN METROPOLITAN REGIONAL COUNCIL	DOMESTIC / WASTE CHARGES - RED HILL TIP	325168.66

Chq/EFT	Date	Name	Description	Amount
EFT44200	23/07/2015	ZIPFORM PTY LTD	2015 / 2016 RATE NOTICE PRODUCTION, PRINTING AND POSTAGE FEES	39423.07
EFT44201	23/07/2015	MCINTOSH & SON	PLANT / VEHICLE PARTS	131.23
EFT44202	23/07/2015	SONIC HEALTHPLUS (KINETIC HEALTH GROUP LTD)	PREPLACEMENT MEDICALS / BASELINE HEARING TESTS	334.40
EFT44203	23/07/2015	CLEAN CLOTH COTTON TRADERS	PROTECTIVE SUPPLIES	126.95
EFT44204	23/07/2015	LGIS INSURANCE BROKING SERVICES	INSURANCE RENEWAL FEES- 30/06/15 - 30/06/16	85929.07
EFT44205	23/07/2015	LGIS WORKCARE SCHEME	LGIS WORKCARE INSURANCE RENEWAL FEES - 30/06/15 - 30/06/16	204177.73
EFT44206	23/07/2015	ACTIMED AUSTRALIA PTY LTD	MEDICAL SUPPLIES FOR PODIARTIST	520.36
EFT44207	23/07/2015	LGIS LIABILITY SCHEME	LGIS LIABILITY INSURANCE RENEWAL FEES - 30/6/15 - 30/06/16	175101.70
EFT44208	23/07/2015	STONETRADERS PTY LTD	GARDEN / RESERVE SUPPLIES	8100.00
EFT44209	23/07/2015	WESTBOOKS	LIBRARY SUPPLIES	2778.45
EFT44210	23/07/2015	STAPLES AUSTRALIA PTY LTD(CORPORATE EXPRESS AUSTRALIA LTD)	STATIONERY / OFFICE SUPPLIES	2138.32
EFT44211	23/07/2015	BLADON WA PTY LTD	MEMORABILIA SUPPLIES	1164.64
EFT44212	23/07/2015	JOHN GIARDINA	COUNCILLOR ALLOWANCE - 01/07/15 - 31/07/15	3471.67
EFT44213	23/07/2015	GEOFF STALLARD	COUNCILLOR ALLOWANCE - 01/07/15 - 31/07/15	2184.17
EFT44214	23/07/2015	GEOFABRICS AUSTRALASIA PTY LTD	GEOFABRIC MATERIAL SUPPLIES	1781.73
EFT44215	23/07/2015	BRIDGESTONE AUSTRALIA LTD	PLANT / VEHICLE PARTS	2342.95
EFT44216	23/07/2015	WORK CLOBBER (MIDLAND)	PROTECTIVE CLOTHING SUPPLIES	241.47
EFT44217	23/07/2015	BENARA NURSERIES	GARDEN / VERGE SUPPLIES	3738.50
EFT44218	23/07/2015	J BLACKWOOD & SON LIMITED	PROTECTIVE WEAR / SUPPLIES	4233.08
EFT44219	23/07/2015	EASTERN HILLS SAWS AND MOWERS	PLANT / VEHICLE PARTS	394.20
EFT44220	23/07/2015	JR & A HERSEY PTY LTD	HARDWARE SUPPLIES	396.00
EFT44221	23/07/2015	APACE AID (INC)	SUPPLY OF PLANTS FOR PLANTS FOR RESIDENTS 2015	13552.77
EFT44222	23/07/2015	ELLENBY TREE FARM	GARDEN / RESERVE SUPPLIES	9432.50
EFT44223	23/07/2015	SPORTS TURF TECHNOLOGY	REVIEW AND UPDATE OF THE KOSTERA OVAL TURF SUPPLY AND INSTALLATION	2000.00
EFT44224	23/07/2015	WA & J KING PTY LTD	GARDEN SUPPLIES FOR VARIOUS LOCATIONS	6120.00

Chq/EFT	Date	Name	Description	Amount
EFT44225	23/07/2015	SHIRE OF MUNDARING	FRIENDS GROUP VOLUNTEER EVENT CATERING	500.00
EFT44226	23/07/2015	MIDWAY FORD (WA)	PLANT / VEHICLE PARTS	771.40
EFT44227	23/07/2015	STAGECRAFT	THEATRE / STAGE EQUIPMENT HIRE	638.00
EFT44228	23/07/2015	CAI FENCES	FENCING SUPPLIES / REPAIRS	4620.00
EFT44229	23/07/2015	MIDLAND CEMENT PRODUCTS	PLUMBING SUPPLIES FOR VARIOUS LOCATIONS	580.80
EFT44230	23/07/2015	WURTH AUSTRALIA PTY LTD	PLANT / VEHICLE PARTS	110.34
EFT44231	23/07/2015	AABEL LINE MARKING	LINE MARKING FOR VARIOUS LOCATIONS	456.50
EFT44232	23/07/2015	WA HINO SALES & SERVICE	PLANT / VEHICLE PARTS	4628.65
EFT44233	23/07/2015	ICON-SEPTECH	DRAINAGE SUPPLIES FOR VARIOUS LOCATIONS	2133.89
EFT44234	23/07/2015	CHAMBER OF COMMERCE & INDUSTRY OF WA	CONSULTING SERVICES IN RELATION TO EMPLOYEE RELATION MATTERS	3381.41
EFT44235	23/07/2015	IAN JUSTIN WHITTEN	COUNCILLOR ALLOWANCE - 01/07/15 - 31/07/15	2184.17
EFT44236	23/07/2015	ORBIT HEALTH & FITNESS SOLUTIONS	GYM EQUIPMENT SUPPLIES	153.89
EFT44237	23/07/2015	THE FARM SHOP (WA) PTY LTD	GARDEN / RESERVE SUPPLIES	1584.00
EFT44238	23/07/2015	B & J CATALANO PTY LTD	ROAD MATERIALS FOR VARIOUS LOCATIONS	705.48
EFT44239	23/07/2015	ANALYTICAL REFERENCE LABORATORIES	TESTING OF ASBESTOS SAMPLE	60.50
EFT44240	23/07/2015	ELDERS LTD	CHEMICAL / CLEANER SUPPLIES	582.16
EFT44241	23/07/2015	MUCHEA TREE FARM	SUPPLY OF PLANTS FOR PLANTS FOR RESIDENTS 2015	5548.30
EFT44242	23/07/2015	LGIS PROPERTY	LGIS PROPERTY INSURANCE RENEWAL - 30/06/15 - 30/06/16	92379.75
EFT44243	23/07/2015	QUICK CORPORATE AUST PTY LTD	STATIONERY & OFFICE SUPPLIES	3455.48
EFT44244	23/07/2015	SUSAN BILICH	COUNCILLOR ALLOWANCE - 01/07/15 - 31/07/15	7977.92
EFT44245	23/07/2015	SCIENTIFIC TECHNICAL SERVICES - STS HEALTH	SERVICE STERILISER EQUIPMENT AT JACK HEALEY CENTRE	444.40
EFT44246	23/07/2015	COMMUNITY NEWSPAPER GROUP LTD	ADVERTISING FOR VARIOUS JOBS AND EVENTS	4376.45
EFT44247	23/07/2015	MUNDARING GARDEN CENTRE	GARDEN SUPPLIES / RESERVE MAINTENANCE	350.40
EFT44248	23/07/2015	BT EQUIPMENT P/L T/A TUTT BRYANT EQUIPMENT	PLANT / VEHICLE PARTS	1455.62
EFT44249	23/07/2015	MAIN ROADS (WA)	INSTALLATION OF SIGNAGE AND PAVEMENT MARKINGS AT WELSHPOOL AND LESMURDIE ROADS	14283.41

Chq/EFT	Date	Name	Description	Amount
EFT44250	23/07/2015	LOCK, STOCK & FARRELL LOCKSMITH PTY LTD	PADLOCKS / KEYS SUPPLIES	1155.00
EFT44251	23/07/2015	REPEAT PLASTICS (WA)	SUPPLY OF 2 BENCH SEATS AND DELIVERY FEES	2985.15
EFT44252	23/07/2015	G FORCE PRINTING	SUPPLY OF PRINTED STATIONERY STOCK	5580.74
EFT44253	23/07/2015	HYDROQUIP PUMPS	REMOVE PUMP / INSTALL INJECTION PIPE WORK CAMERA INSPECTION - HARTFIELD LAKES BORE	10516.00
EFT44254	23/07/2015	DIRECT TRADES SUPPLY PTY LTD	HARDWARE SUPPLIES	394.20
EFT44255	23/07/2015	GREENWAY ENTERPRISES	GARDEN / RESERVE SUPPLIES	5117.32
EFT44256	23/07/2015	MARGARET THOMAS	COUNCILLOR ALLOWANCE - 01/07/15 - 31/07/15	2184.17
EFT44257	23/07/2015	VERMEER (WA & NT)	PLANT / VEHICLE PARTS	94.98
EFT44258	23/07/2015	BGC CEMENT BAGGED PRODUCTS	ROAD MATERIALS SUPPLIES	334.49
EFT44259	23/07/2015	INSIGHT CCS PTY LTD	AFTER HOURS ANSWERING SERVICES - JUNE 2015	2453.17
EFT44260	23/07/2015	PROJECT INDUSTRIES	ANNUAL SERVICE TO PALFINGER CRANE	1305.70
EFT44261	23/07/2015	NOREEN TOWNSEND	COUNCILLOR ALLOWANCE - 01/07/15 - 31/07/15	2184.17
EFT44262	23/07/2015	MODERN TEACHING AIDS	CHILDREN ACTIVITY SUPPLIES	194.54
EFT44263	23/07/2015	FRANK LINDSEY	COUNCILLOR ALLOWANCE - 01/07/15 - 31/07/15	2184.17
EFT44264	23/07/2015	AUSTRALIAN PLANT WHOLESALERS	PLANT SUPPLIES FOR VARIOUS LOCATIONS	1336.50
EFT44265	23/07/2015	SIMON DI ROSSO	COUNCILLOR ALLOWANCE - 01/07/15 - 31/07/15	2184.17
EFT44266	23/07/2015	WEBSITE WEED & PEST PTY LTD	WEED CONTROL AT VARIOUS LOCATIONS	11220.00
EFT44267	23/07/2015	GENTRONICS	PLANT / VEHICLE PARTS	2743.18
EFT44268	23/07/2015	NATSYNC ENVIRONMENTAL	SUPPLY AND INSTALLATION OF 6 HABITAT BOXES	2170.00
EFT44269	23/07/2015	HUMES	DRAINAGE SUPPLIES FOR VARIOUS LOCATIONS	5155.99
EFT44270	23/07/2015	PRO-LAMPS PTY LTD	SUPPLY LIGHT GLOBES AND FITTINGS	969.65
EFT44271	23/07/2015	BOYA EQUIPMENT PTY LTD	PLANT / VEHICLE PARTS	1347.01
EFT44272	23/07/2015	LIGHTFORCE ASSET PTY LTD T/AS ERECTIONS WA	SUPPLY AND INSTALL OF W BEAM GUARDRAIL – MUNDARING WEIR ROAD	107230.02
EFT44273	23/07/2015	ROAD SIGNS AUSTRALIA (ALLPACK SIGNS)	TRAFFIC PROTECTION PRODUCTS / SIGNAGE	2010.80
EFT44274	23/07/2015	PIRTEK WELSHPOOL	PLANT / VEHICLE PARTS	1602.64
EFT44275	23/07/2015	MULTILEC ENGINEERING	QUARTERLY SERVICING & TESTING OF LIFTS	1344.54
EFT44276	23/07/2015	HOLCIM AUSTRALIA PTY LTD	ROAD MATERIALS FOR VARIOUS LOCATIONS	2320.30
EFT44277	23/07/2015	MOWMASTER TURF EQUIPMENT	PLANT / VEHICLE PARTS	3705.25

Chq/EFT	Date	Name	Description	Amount
EFT44278	23/07/2015	ANDREW WADDELL	COUNCILLOR ALLOWANCE - 01/07/15 - 31/07/15	2184.17
EFT44279	23/07/2015	DRAINFLOW SERVICES PTY LTD	CLEANING / MAINTAINING STORM WATER DRAINS	9405.00
EFT44280	23/07/2015	FORESTVALE TREES PTY LTD	GARDEN / VERGE SUPPLIES	2420.00
EFT44281	23/07/2015	WEST COAST SHADE	REPAIRS TO SHADE SAILS AT VARIOUS LOCATIONS	2722.50
EFT44282	23/07/2015	DYLAN O'CONNOR	COUNCILLOR ALLOWANCE - 01/07/15 - 31/07/15	2184.17
EFT44283	23/07/2015	BOWDEN TREE CONSULTANCY	ARBORICULTURAL CONSULTANCY	528.00
EFT44284	23/07/2015	FUJI XEROX AUSTRALIA PTY LTD	PHOTOCOPYING CHARGES AND SUPPLY OF A NEW PRINTER / COPIER	17424.46
EFT44285	23/07/2015	RYNAT INDUSTRIES	SUPPLY AND INSTALL THE ENDURE SERIES LAMINATED DOORS AND SIDE NIBS	3465.00
EFT44286	23/07/2015	HARE & FORBES PTY LTD	PLANT / VEHICLE PARTS	5088.60
EFT44287	23/07/2015	EDWINA FORWARD ENGRAVING	SUPPLY OF COMMEMORATIVE TREE PLANTING PLAQUES	1676.62
EFT44288	23/07/2015	BAD BACKS STORE	OFFICE FURNITURE SUPPLIES	4885.00
EFT44289	23/07/2015	HEMA MAPS PTY LTD	PRINTING AND SUPPLY OF MAPS	276.82
EFT44290	23/07/2015	ORORA LTD	COLLECTION OF CARDBOARD FROM WALLISTON TRANSFER STATION	96.80
EFT44291	23/07/2015	DYMOCKS MIDLAND GATE	LIBRARY SUPPLIES	1427.14
EFT44292	23/07/2015	SITE ENVIRONMENTAL AND REMEDIATION SERVICES PTY LTD	INSTALLATION OF NESTED WELLS - DAWSON AVENUE LANDFILL AND MONTHLY MONITORING APRIL - JUNE 2015	23540.00
EFT44293	23/07/2015	HIND'S SAND SUPPLY	SUPPLY AND DELIVERY OF NATIVE SOIL TO WATTLE GROVE	7562.50
EFT44294	23/07/2015	ETTIS PTY LTD	ANNUAL TAGGING AND TESTING OF ELECTRICAL APPLIANCES	2203.63
EFT44295	23/07/2015	KCTT T/A KC TRAFFIC & TRANSPORT PTY LTD	INFRASTRUCTURE SERVICING REPORT FOR VARIOUS LOCATIONS	11822.25
EFT44296	23/07/2015	TURFWORKS WA PTY LTD	RESERVE MOWING AT VARIOUS LOCATIONS	11373.84
EFT44297	23/07/2015	ZACKS COMMERCIAL ARTISTS	UNIFORM SUPPLIES FOR HARTFIELD PARK	106.55
EFT44298	23/07/2015	GECCO	MERCHANDISE SUPPLIES FOR RESALE AT THE ZIG ZAG CULTURAL CENTRE	178.63
EFT44299	23/07/2015	PERTH WASTE PTY LTD	DOMESTIC / RECYCLING RUBBISH SERVICES & BIN CHARGES	332171.23

Chq/EFT	Date	Name	Description	Amount
EFT44300	23/07/2015	FORT KNOX RECORDS MANAGEMENT	SECONDARY STORAGE AND DESTRUCTION OF RECORDS - PERIOD 01/06/15 - 30/06/15	208.78
EFT44301	23/07/2015	JUST SKIPS	DELIVERY OF 2 X ASBESTOS BINS FOR THE FREE DROP OFF DAY 21 JUNE 2015	1604.50
EFT44302	23/07/2015	SHERWOOD FLOORING PTY LTD	TIMBER FLOOR RESURFACING AND SEALING AT LESMURDIE HALL	10230.00
EFT44303	23/07/2015	ESSENTIAL ENVIRONMENTAL	A REPORT ON ENVIRONMENTAL ISSUES OF THE RELEVANT AREAS FOR INCLUSION IN THE SHIRE'S SUBMISSION TO THE STATE GOVERNMENT	4356.00
EFT44304	23/07/2015	DAYTONE PRINTING PTY LTD	PRINTING OF BROCHURES / INVITES FOR VARIOUS LOCATIONS	994.80
EFT44305	23/07/2015	ALLPET PRODUCTS	DANGEROUS DOG SIGNS	479.03
EFT44306	23/07/2015	WEST TIP WASTE CONTROL PTY LTD	COLLECTION AND RETURN OF HOOKLIFT BINS FROM WALLISTON TRANSFER STATION	32618.85
EFT44307	23/07/2015	ADVANCED PUMP TECHNOLOGIES	PROGRESS CLAIM 3 - SUPPLY, DELIVERY, INSTALLATION AND COMMISSIONING OF THE HARTFIELD PARK MANAGED AQUIFER RECHARGE TRIAL WATER TREATMENT PLANT	31398.13
EFT44308	23/07/2015	SPIDER WASTE COLLECTION SERVICES PTY LTD	COLLECTION AND RECYCLING OF MATTRESSES FROM WALLISTON TRANSFER STATION AND DAWSON AVE	8932.00
EFT44309	23/07/2015	ALPERSTEIN DESIGNS	MERCHANDISE SUPPLIES FOR THE ZIG ZAG CULTURAL CENTRE	53.79
EFT44310	23/07/2015	A TEAM PRINTING	PRINTING 2000 EXPERIENCE PERTH HILLS BUMPER STICKERS	429.00
EFT44311	23/07/2015	E-LUMEN8 LIGHTING SOLUTIONS	ADDITIONAL LIGHT FITTING FOR ZIG ZAG CULTURAL CENTRE	880.00
EFT44312	23/07/2015	AEC GROUP PTY LTD	ECONOMICS INPUT FOR STRUCTURE PLANNING AROUND FUTURE FORRESTFIELD TRAIN STATION	4400.00
EFT44313	23/07/2015	BUSHFIRE PRONE PLANNING (BPP GROUP PTY LTD)	BUSHFIRE REPORT FOR SUB-REGIONAL FRAMEWORK SUBMISSION	3176.80
EFT44314	23/07/2015	JAPANESE TRUCK & BUS SPARES PTY LTD	PLANT / VEHICLE PARTS	2283.75

Chq/EFT	Date	Name	Description	Amount
EFT44315	23/07/2015	PAOLA DI PERNA	REPORT ON THE PROPOSED DUAL DENSITY SCHEME AMENDMENT AND POLICY AT CENTRAL KALAMUNDA AND FORRESTFIELD	1875.00
EFT44316	23/07/2015	PROJECT ENGINEERING (WA) PTY LTD	SUPPLY AND INSTALL AND COMMISSIONING OF INJECTION LINE AND PACKER VALVE FOR THE HARTFIELD PARK M.A.R TRIAL AS PER SCOPE OF WORKS	2849.00
EFT44317	23/07/2015	MSP ELECTRICAL PTY LTD	SUPPLY OF 5 IRRIGATION CABINETS AT VARIOUS LOCATIONS	42658.00
EFT44318	23/07/2015	PJ & DM GODFREY FENCING CONTRACTORS	CARRY OUT FENCE REPAIRS TO NEW AND OLD CHAINMESH FENCE AT DAWSON ROAD FORRESTFIELD	990.00
EFT44319	23/07/2015	FACILITATRIX	MEDIATION SERVICES	500.00
EFT44320	23/07/2015	ROSS BROWN SALES PTY LTD	SUPPLY OF A WHITE SUPERFAST THERMOPEN FOR HEALTH DEPARTMENT	157.30
EFT44321	23/07/2015	JUROVICH SURVEYING	SURVEY DRAINAGE EASEMENT KIMBARLEY WAY LESMURDIE	10879.00
EFT44322	23/07/2015	PORTABLE POP-UP MARQUEES	SUPPLY OF A PORTABLE MARQUEE FOR RANGERS SERVICES	1594.14
EFT44323	23/07/2015	LANDCARE WEED CONTROL	WEED CONTROL AT VARIOUS LOCATIONS	2248.07
EFT44324	23/07/2015	RUBIN ENTERPRISES T/A BORDERLINE KERBING	CONCRETE KERBING AT VARIOUS LOCATIONS	2745.60
EFT44325	23/07/2015	THE LINEN PRESS	ASSORTED MERCHANDISE FOR RESALE IN THE ZIG ZAG CULTURAL CENTRE GIFT SHOP	327.47
EFT44326	23/07/2015	PRO CRACK SEAL	SUPPLY OF CRACK SEALING SERVICES TO EXISTING ASPHALT ROADS AT VARIOUS LOCATIONS	4840.00
EFT44327	23/07/2015	POSTER PASSION	WINDOW DISPLAYS 2015 SPRING FESTIVAL	7189.88
EFT44328	23/07/2015	TREDWELL MANAGEMENT SERVICES	PERTH HILLS TRAILS LOOP DESIGN INCEPTION PAYMENT	27500.00
EFT44329	23/07/2015	MOFFAT PTY LTD	SUPPLY OF A DISHWASHER FOR ZIG ZAG GALLERY	3346.20
68844	29/06/2015	DEPARTMENT OF TRANSPORT	FLEET VEHICLE REGISTRATIONS	32675.65
68845	01/07/2015	HOSPITAL BENEFIT FUND OF WA	PAYROLL DEDUCTIONS	361.65
68846	01/07/2015	AUSTRALIAN SERVICES UNION	PAYROLL DEDUCTIONS	175.70
68847	01/07/2015	MUNICIPAL EMPLOYEES UNION	PAYROLL DEDUCTIONS	582.00

Chq/EFT	Date	Name	Description	Amount
68848	01/07/2015	TELSTRA CORPORATION	TELEPHONE EXPENSES	6990.21
68849	01/07/2015	WATER CORPORATION	WATER USE AND SERVICE CHARGE FEES	5888.80
68850	01/07/2015	SYNERGY	POWER CHARGES	25803.95
68851	01/07/2015	ALINTA ENERGY	GAS CHARGES	21.95
68852	01/07/2015	BUILDING COMMISSION	BUILDING LEVY - JUNE 2015	12957.25
68853	01/07/2015	CASH - KALAMUNDA LIBRARY	PETTY CASH REIMBURSEMENT	71.35
68854	01/07/2015	CASH - FORRESTFIELD LIBRARY	PETTY CASH REIMBURSEMENT	62.80
68855	01/07/2015	CASH - HARTFIELD PARK	PETTY CASH REIMBURSEMENT	147.20
68856	01/07/2015	COLONIAL 1ST STATE SUPERANNUATION	SUPERANNUATION CONTRIBUTIONS	1050.80
68857	01/07/2015	HESTA SUPER FUND	SUPERANNUATION CONTRIBUTIONS	1010.02
68858	01/07/2015	AMPLIFE LIMITED	SUPERANNUATION CONTRIBUTIONS	347.15
68859	01/07/2015	MLC MASTERKEY SUPER GOLD STAR VERSION ACCOUNT	SUPERANNUATION CONTRIBUTIONS	198.54
68860	01/07/2015	CASH - MEALS ON WHEELS	PETTY CASH REIMBURSEMENT	587.35
68861	01/07/2015	CASH - KALAMUNDA HACC	PETTY CASH REIMBURSEMENT	269.00
68862	01/07/2015	ANZ SUPER ADVANTAGE	SUPERANNUATION CONTRIBUTIONS	216.39
68863	01/07/2015	CASH - HIGH WYCOMBE LIBRARY	PETTY CASH REIMBURSEMENT	89.47
68864	01/07/2015	ING INTEGRA PERSONAL SUPER	SUPERANNUATION CONTRIBUTIONS	83.66
68865	01/07/2015	SHELFORD CONSTRUCTIONS PTY LTD	FOOTPATH DEPOSIR REFUND	1036.00
68866	01/07/2015	MACQUARIE WRAP	SUPERANNUATION CONTRIBUTIONS	656.42
68867	01/07/2015	AXA	SUPERANNUATION CONTRIBUTIONS	57.93
68868	01/07/2015	MLC NAVIGATOR ACCESS SUPER & PENSION	SUPERANNUATION CONTRIBUTIONS	54.94
68869	01/07/2015	ONEPATH MASTERFUND	SUPERANNUATION CONTRIBUTIONS	468.65
68870	01/07/2015	MLC NOMINEES PTY LTD	SUPERANNUATION CONTRIBUTIONS	50.36
68871	01/07/2015	BT SUPER FOR LIFE	SUPERANNUATION CONTRIBUTIONS	251.25
68872	01/07/2015	ASGARD & WRAP ALLOCATED PENSION	SUPERANNUATION CONTRIBUTIONS	150.39
68873	01/07/2015	SUNSUPER PTY LTD	SUPERANNUATION CONTRIBUTIONS	45.78
68874	01/07/2015	BENDIGO SMART START PERSONAL SUPER	SUPERANNUATION CONTRIBUTIONS	267.55
68875	01/07/2015	IOOF PORTFOLIO SERVICE PERSONAL SUPERANNUATION	SUPERANNUATION CONTRIBUTIONS	107.26

Chq/EFT	Date	Name	Description	Amount
68876	15/07/2015	HOSPITAL BENEFIT FUND OF WA	PAYROLL DEDUCTIONS	361.65
68877	15/07/2015	AUSTRALIAN SERVICES UNION	PAYROLL DEDUCTIONS	180.60
68878	15/07/2015	MUNICIPAL EMPLOYEES UNION	PAYROLL DEDUCTIONS	613.90
68879	15/07/2015	TELSTRA CORPORATION	TELEPHONE EXPENSES	62672.13
68880	15/07/2015	WATER CORPORATION	WATER USE AND SERVICE CHARGE FEES	4825.09
68881	15/07/2015	BCITF	LEVY FEE - JUNE 15	19103.95
68882	15/07/2015	SYNERGY	POWER CHARGES	10113.23
68883	15/07/2015	ALINTA ENERGY	GAS CHARGES	508.40
68884	15/07/2015	WESTERN AUSTRALIAN TREASURY CORPORATION	ACCRUED GUARANTEE FEE 2014/2015	1733.85
68885	15/07/2015	GOLD COAST CITY COUNCIL	REGISTRATION FOR 1 STAFF TO ATTEND LGCOG JULY 2015 - DELEGATE PROGRAMME	460.00
68886	15/07/2015	CASH - ADMIN	PETTY CASH REIMBURSEMENT	541.25
68887	15/07/2015	CASH - FORRESTFIELD LIBRARY	PETTY CASH REIMBURSEMENT	97.03
68888	15/07/2015	COLONIAL 1ST STATE SUPERANNUATION	SUPERANNUATION CONTRIBUTIONS	799.87
68889	15/07/2015	HESTA SUPER FUND	SUPERANNUATION CONTRIBUTIONS	1070.99
68890	15/07/2015	AMPLIFE LIMITED	SUPERANNUATION CONTRIBUTIONS	361.28
68891	15/07/2015	MLC MASTERKEY SUPER GOLD STAR VERSION ACCOUNT	SUPERANNUATION CONTRIBUTIONS	195.91
68892	15/07/2015	CASH - MEALS ON WHEELS	PETTY CASH REIMBURSEMENT	369.60
68893	15/07/2015	ANZ SUPER ADVANTAGE	SUPERANNUATION CONTRIBUTIONS	216.39
68894	15/07/2015	ING INTEGRA PERSONAL SUPER	SUPERANNUATION CONTRIBUTIONS	151.51
68895	15/07/2015	LIVING CHURCH OF GOD LTD	KEY BOND REFUND	50.00
68896	15/07/2015	CASH - ZIG ZAG CULTURAL CENTRE	PETTY CASH REIMBURSEMENT	65.10
68897	15/07/2015	MACQUARIE WRAP	SUPERANNUATION CONTRIBUTIONS	656.42
68898	15/07/2015	ONEPATH MASTERFUND	SUPERANNUATION CONTRIBUTIONS	421.32
68899	15/07/2015	BT SUPER FOR LIFE	SUPERANNUATION CONTRIBUTIONS	251.25
68900	15/07/2015	ASGARD & WRAP ALLOCATED PENSION	SUPERANNUATION CONTRIBUTIONS	134.54
68901	15/07/2015	BENDIGO SMART START PERSONAL SUPER	SUPERANNUATION CONTRIBUTIONS	267.55
68902	15/07/2015	ANZ SMART CHOICE SUPER	SUPERANNUATION CONTRIBUTIONS	240.45

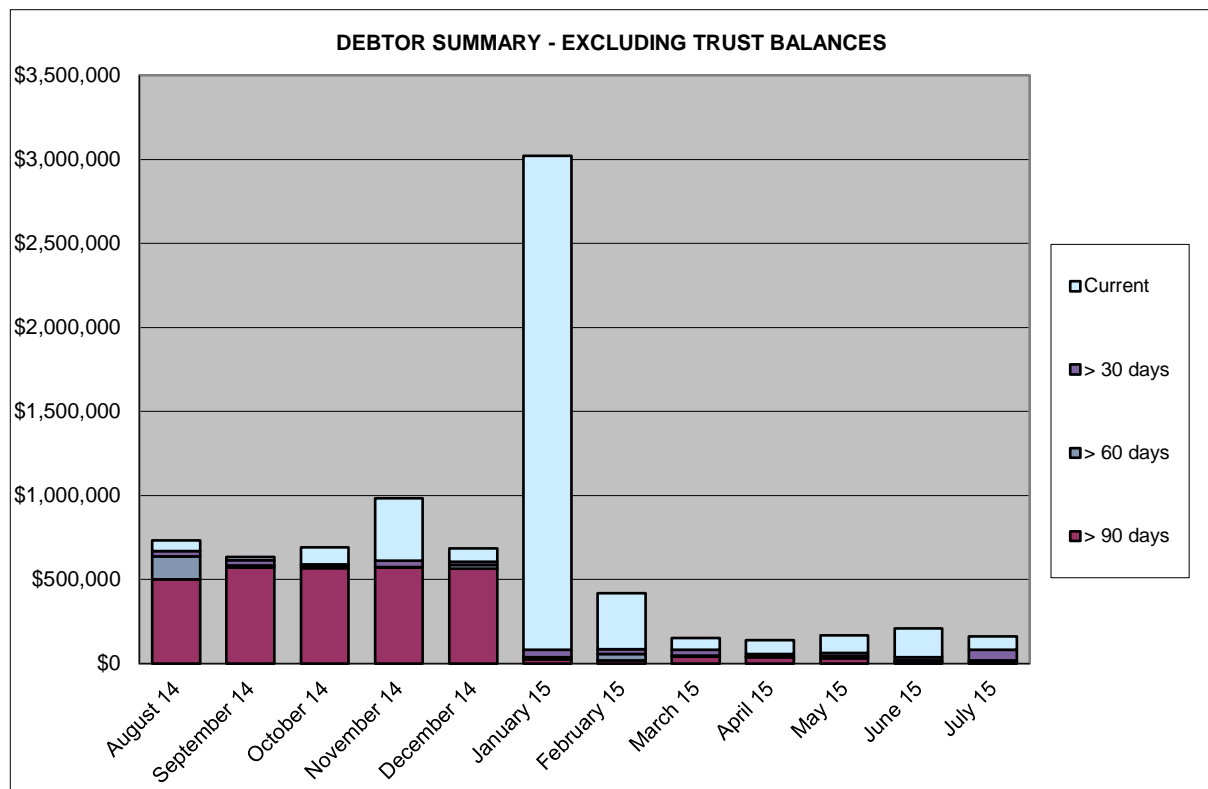
Chq/EFT	Date	Name	Description	Amount
68903	15/07/2015	IOOF PORTFOLIO SERVICE PERSONAL SUPERANNUATION	SUPERANNUATION CONTRIBUTIONS	125.92
68904	23/07/2015	SYNERGY	POWER CHARGES	120619.35
				4574235.97
		Payroll Payments		
F507151333106	14/07/2015	SHIRE OF KALAMUNDA PAYROLL	FOR THE PERIOD TO 14 JULY 2015 VARIOUS AWARDS	572103.87
F507291966239	28/07/2015	SHIRE OF KALAMUNDA PAYROLL	FOR THE PERIOD TO 28 JULY 2015 VARIOUS AWARDS	578576.94
				1150680.81

Attachment 2

**SHIRE OF KALAMUNDA
 SUMMARY OF DEBTORS
 FOR THE PERIOD ENDED 31 JULY 2015**

Sundry Debtors Trial Balance (excluding trust balances) - Summary Aged Listing

	> 90 days	> 60 days	> 30 days	Current	Total
August 14	\$501,296	\$134,978	\$33,679	\$62,152	\$732,105
September 14	\$572,315	\$10,832	\$33,781	\$18,257	\$635,185
October 14	\$567,963	\$15,753	\$5,483	\$102,266	\$691,466
November 14	\$571,997	\$3,680	\$36,713	\$371,070	\$983,459
December 14	\$565,418	\$21,805	\$18,617	\$80,765	\$686,604
January 15	\$25,805	\$11,841	\$45,278	\$2,938,970	\$3,021,893
February 15	\$17,884	\$38,295	\$29,893	\$332,021	\$418,092
March 15	\$42,362	\$6,134	\$34,711	\$69,419	\$152,626
April 15	\$39,128	\$2,100	\$14,226	\$84,112	\$139,566
May 15	\$32,601	\$10,401	\$21,704	\$103,860	\$168,565
June 15	\$12,559	\$6,161	\$17,913	\$173,414	\$210,047
July 15	\$8,043	\$9,817	\$65,469	\$77,801	\$161,131



SHIRE OF KALAMUNDA			
SUMMARY OF DEBTORS - FOR THE PERIOD ENDED 31 JULY 2015			
AMOUNT	DEBTOR	DETAILS	STATUS
>90 days			
\$3,479.33	Kalamunda Cricket Club	Loan / Operating Expenses	Arranging Payment in July/August - Registration commences August
\$4,564.07	90+ Days Debts consisting of amounts under \$1,000.00.		Debtors to be contacted to advise debt recovery action pending / final notices issued / debt with D&B or possible write-off of debt pending.
\$8,043.40	Total Debts 90+ Days	Excluding Trust Balances	
>60 days			
\$3,388.07	Kalamunda & Canning Rugby League Club	Operating Expenses	To contact
\$1,256.24	Kalamunda Cricket Club	Loan / Operating Expenses	Arranging Payment in July/August - Registration commences August
\$4,810.01	Zig Zag Café ^	Lease / Operating Expenses	Direct Debit Payment
\$363.04	60+ Days Debts consisting of amounts under \$1,000.00.		All debtors to be contacted by telephone / email - copy invoices mailed as required.
\$9,817.36	Total Debts 60+ Days		
>30 days			
\$1,203.00	Better Health Company	Hall Hire	
\$1,137.50	Born to Sing	Hall Hire	
\$1,680.00	Early Bird Learning	Hall Hire	
\$2,234.75	Evolution Cheer & Dance	Hall Hire	
\$1,243.00	Fayyaz Ahmad Raja	Health Services	
\$3,895.88	Forrestfield United	Loan 214	Direct Debit Payment
\$2,792.50	Hills District Callisthenics	Hall Hire	
\$2,002.00	Jollettes Gymnastics	Hall Hire	
\$2,488.32	Kalamunda & Districts Football	Operating Expenses	

> 30 days (cont)			
\$1,846.03	Kalamunda & Districts Junior Football	Operating Expenses	
\$3,270.88	Kalamunda & Districts Netball	Operating Expenses	
\$3,095.00	Kalamunda Performers	Hall Hire	
\$1,621.82	Kalamunda United FC	Operating Expenses	
\$1,906.75	Katherine Rogers	Hall Hire	
\$1,359.00	Midland Sisdac	Hall Hire	
\$1,148.13	Plume Estate	Private Works	
\$1,426.00	Reviva Pilates	Hall Hire	
\$3,302.20	Shire of Corrigin	Shared Services	
\$1,544.65	Shire of Wandering	Shared Services	
\$1,222.00	Simon Mead	Hall Hire	
\$1,800.00	Weight Watchers International	Hall Hire	
\$5,102.06	Zig Zag Café	Lease / Operating Expenses	Direct Debit Payment
\$18,147.84	30+ Days Debts consisting of amounts under \$1,000.00		Reminder invoices to be sent.
\$65,469.31	Total Debts 30+ Days	Excluding Trust Balances	
< 30 days			
\$82,475.20	Total of Current Debts		
\$4,674.58	Total of Accounts in Credit		
\$161,130.69	Total - Debtors Trial Balance	Excluding Trust Balances	
FOOTNOTES			
* Denotes currently in negotiation of invoice amount and details			
^ Denotes payment arrangement in place			

Attachment 3

**SHIRE OF KALAMUNDA
 SUMMARY OF CREDITORS
 FOR THE PERIOD ENDED 31 JULY 2015**

Sundry Creditors Trial Balance - Summary Aged Listing

Month End	> 90 days	> 60 days	> 30 days	Current	Total
31/07/2014	\$9,347	\$1,978	\$27,392	\$449,082	\$487,799
31/08/2014	\$1,000	\$208,043	\$15,978	\$601,439	\$826,460
30/09/2014	\$11,865	\$62,484	\$62,683	\$908,456	\$1,045,488
31/10/2014	\$2,955	\$3,399	\$76,354	\$1,209,519	\$1,292,227
30/11/2014	\$6,311	\$15,497	\$89,340	\$1,137,344	\$1,248,492
31/12/2014	\$16,026	\$3,890	\$42,960	\$837,074	\$899,950
31/01/2015	\$5,137	\$407,117	\$4,182	\$292,502	\$708,938
28/02/2015	\$0	\$0	\$81,137	\$511,560	\$592,697
31/03/2015	\$13,318	\$1,430	\$17,916	\$406,194	\$438,858
30/04/2015	\$3,023	\$8,397	\$182,562	\$526,209	\$720,191
31/05/2015	\$11,955	\$13,047	\$34,358	\$1,538,190	\$1,597,551
30/06/2015	\$6,259	\$16,998	\$91,434	\$3,391,506	\$3,506,197
31/07/2015	\$1,100	\$2,200	\$81,330	\$570,084	\$654,714

Comment

- > 90 days Original Invoices for Townley's Plumbing & Gas Service not received in Accounts to process.
- > 60 days Original Invoices for Ashmy Pty Ltd & JWH Group Pty Ltd not received in Accounts to process.
- > 30 days These invoices are paid on the third fortnightly payment run.

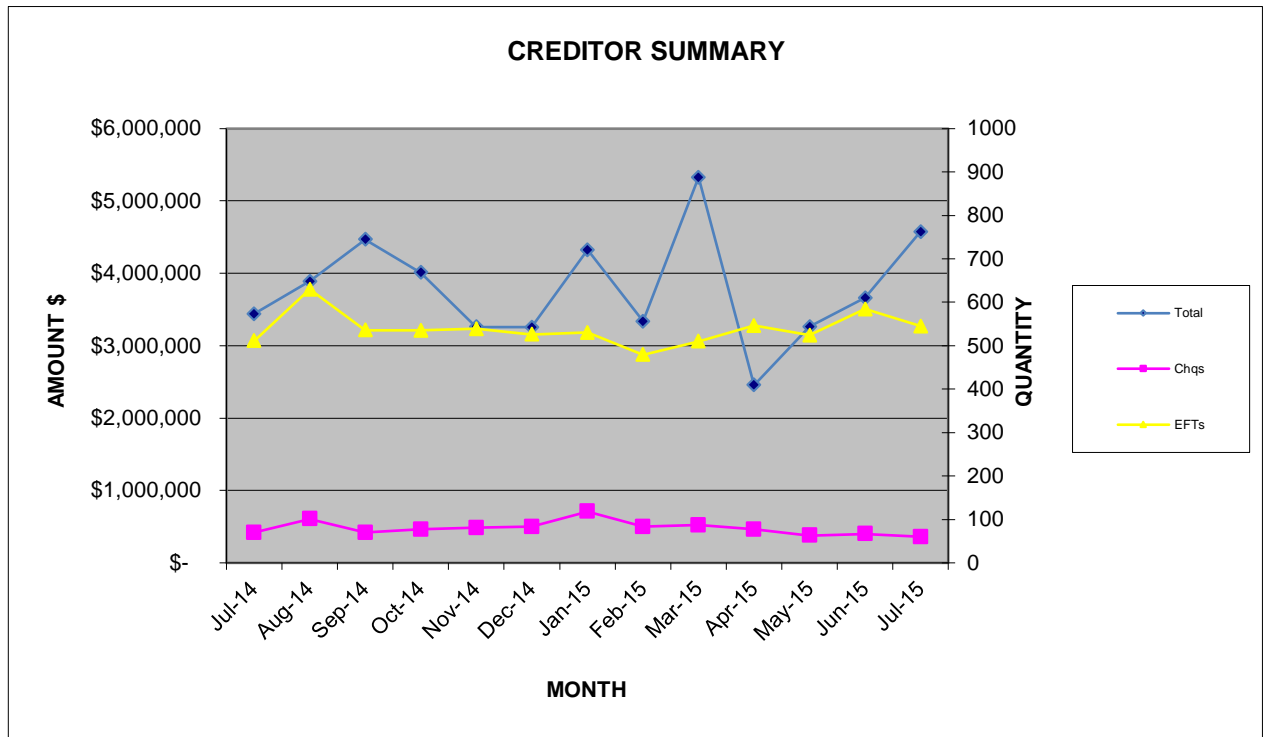
Creditor Payments made

Month	Amount \$	Quantity		
		Cheques	EFTs	Total
Jul-14	\$ 3,439,392	70	511	581
Aug-14	\$ 3,890,438	101	630	731
Sep-14	\$ 4,467,596	70	536	606
Oct-14	\$ 4,009,379	77	535	612
Nov-14	\$ 3,259,838	81	539	620
Dec-14	\$ 3,255,778	83	526	609
Jan-15	\$ 4,323,371	118	530	648
Feb-15	\$ 3,335,267	83	479	562
Mar-15	\$ 5,324,488	87	510	597
Apr-15	\$ 2,454,269	77	546	523
May-15	\$ 3,263,699	63	524	587
Jun-15	\$ 3,661,757	67	584	651
Jul-15	\$ 4,574,236	60	545	605

*Excludes net staff payroll

*Creditors on 30 day terms are paid on the 28th of the month following.

*Local suppliers are paid on 14 day terms.



Declaration of financial / conflict of interests to be recorded prior to dealing with each item.

28. Rates Debtors Report for the Period Ended 31 July 2015

Previous Items N/A
 Responsible Officer Director Corporate Services
 Service Area Finance
 File Reference FI-DRS-004
 Applicant N/A
 Owner N/A

Attachment 1 Summary of Outstanding Rates for the period ended 31 July 2015.

PURPOSE

1. To receive the report on rates debtors for the period ended 31 July 2015 (Attachment 1).

BACKGROUND

2. A total of 22,834 rates notices were issued on 13 July 2015 with the following payment options:-

Options	Payment Dates			
Full Payment	17 August 2015			
Two Instalments	17 August 2015	10 December 2015		
Four Instalments	17 August 2015	12 October 2015	10 December 2015	08 February 2016

3. Rates Levied for the 2015/2016 Financial Year totalled \$31,884,691. Of this amount, approximately \$4.6m has been collected as at 31 July 2015. The rates department launched three additional services to better assist ratepayers in paying their amounts due. These are:
 - "A smarter way to pay" – allows the ratepayer to pay in small instalments over a 12 month period via direct debit. The model calculates a figure which ensures that the ratepayer will be in credit for the following year's rates. To date 160 ratepayers have signed up for the various direct debit options on offer of which 120 have elected the smarter way to pay.
 - "eRates" – allows the ratepayer to receive their future rates notices by email instead of the post. This will improve efficiency, is traceable and ratepayer can be anywhere in the world and still get their rates notice. It will also save the Shire >\$1 for every notice sent via email and not the post. To promote this service, one of the rates prizes traditionally offered was converted to purchasing Apple and android tablets to obtain a better outcome. To date there are 794 properties signed up for electronic delivery.

-
- “Bpay View” – Allows the ratepayer to link the rates notice to the banking institution. This is an additional service that our commercial bankers, CBA, have given us the opportunity at no cost to the Shire. CBA paid \$8,000 for implementation of this service.
4. A total of 1,439 ratepayers have taken up an instalment option so far. Of these, 258 have taken up the option to pay by two instalments and 1,181 have taken up the option to pay by four instalments. The due date for taking up the instalment options is 17 August 2015.
 5. As noted on (Attachment 1), the Shire has collected \$4,653,906 or 14.44% of the debt from the date the rates and service charges were raised, compared to 14% at the same period last year.
 6. Interim Rates for the 2015/2016 financial year will commence after the first instalment date of 17 August 2015.

DETAILS

Debt Recovery

7.
 - From 2012/2013 to 2013/2014 there are now nine claims outstanding with five claims waiting for a PSSO Land.
 - The Shire has issued 246 General Procedure Claims through the Courts for 2014/15 rates and service charges outstanding. Of these 246, the Shire has an active default judgement on 37 properties of which two are being defended. A total of 209 of these matters have been closed due to payment being received.
 - Of the 37 properties where the Shire has default judgement active, a total of 27 properties have had a Property Seizure and Sales Order (PSSO) – Goods issued or are awaiting issue through the Courts.
 - There are five properties where the rates have been outstanding for three years and over and all legal attempts to collect the rates has been unsuccessful. A briefing session was provided to Council on 25 May 2015. Ward Councillors will be contacting these debtors informing them of the Shire’s intention to proceed with a Land Warrant. The Shire is waiting on feedback from Councillor’s actions before pursuing this matter.
 - Debt recovery will start approximately two weeks after the 17 August 2015 due date. Final Notices will be sent to all properties with an outstanding balance of more than \$50.

STATUTORY AND LEGAL CONSIDERATIONS

8. The Shire collects its rates debts in accordance with the *Local Government Act (1995) Division 6 – Rates and Service Charges under the requirements of subdivision 5 – Recovery of unpaid rates and service charges.*

POLICY CONSIDERATIONS

9. Nil.

COMMUNITY ENGAGEMENT REQUIREMENTS

10. Nil.

FINANCIAL CONSIDERATIONS

11. The early raising of rates in July has allowed the Shires operations to commence without delays in addition to earning additional interest income.

STRATEGIC COMMUNITY PLAN

Strategic Planning Alignment

12. *Kalamunda Advancing: Strategic Community Plan to 2023*

OBJECTIVE 6.8 – To ensure financial sustainability through the implementation of effective financial management, systems and plans.

Strategy 6.8.4 Provide effective financial services to support the Shire's operations and to meet sustainability planning, reporting and accountability requirements.

SUSTAINABILITY

Social Implications

13. Debt collection can have implications upon those ratepayers facing hardship and the Shire must ensure equity in its debt collection processes.

Economic Implications

14. Effective collection of all outstanding debtors leads to enhanced financial sustainability for the Shire.

Environmental Implications

15. Nil.

RISK MANAGEMENT CONSIDERATIONS

16.

Risk	Likelihood	Consequence	Rating	Action/Strategy
Ratepayers defaulting on payment obligation resulting in the disruption of cash flows and increase collection costs.	Possible	Major	High	Ensure debt collections is rigorously managed.

OFFICER COMMENT

17. The Shire's debt collection strategy has proven to be very effective with a 98.70% collection rate in the 2014/2015 financial year. With the additional services launched, it is envisaged that the collection rate will be achieved again for 2015/2016 financial year.

Voting Requirements: Simple Majority

OFFICER RECOMMENDATION (C&C 28/2015)

That Council:

1. Receives the rates debtors report for the period ended 31 July 2015 (Attachment 1).

Moved:

Seconded:

Vote:

Attachment 1

**SHIRE OF KALAMUNDA
 SUMMARY OF OUTSTANDING RATES
 FOR THE PERIOD ENDED 31 JULY 2015**

Rates Outstanding Debtors

	3rd Previous Year + Outstanding	2nd Previous Year Outstanding	Previous Year Outstanding	Current Outstanding	Total Outstanding	Previous Year Total Outstanding
30-Jun-15	Balance Forward				\$856,619	\$869,771
30-Jul-15	\$374,611	\$125,241	\$303,167	\$27,284,383	\$28,087,403	\$26,049,358

Rates Outstanding as at 30/06/2015

\$856,619

Rate Levied 2015/2016

\$31,884,691

Interim 2015/2016

\$0

Back Rates

\$0

Total Levies To Date for 2015/2016

\$31,884,691

Total Collectable

\$32,741,310

Total Collected to date

\$4,653,906

Total Rates Outstanding

\$28,087,404

Current Deferred Rates Amount (from Rate Reports)

\$514,420

Total Rates amount to be collected not including deferred

\$27,572,984

% of Rates Outstanding:

85.56%

% of Rates Collected:

14.44%

Comment

The 2015/2016 Instalment Dates are as follows:

	4xinstalments	2xinstalments
1st Instalment	17/08/2015	17/08/2015
2nd Instalment	12/10/2015	10/12/2015
3rd Instalment	10/12/2015	
4th Instalment	08/02/2016	

Declaration of financial / conflict of interests to be recorded prior to dealing with each item.

29. Quarterly Progress Report – April - June 2015

Previous Items	N/A
Responsible Officer	Chief Executive Officer
Service Area	Office of the CEO
File Reference	OR-CMA-009
Applicant	N/A
Owner	N/A

Attachment 1 Quarterly Progress Report – April - June 2015

PURPOSE

1. To report to Council on the Shire's progress towards achieving its strategic goals.

BACKGROUND

2. The Quarterly Progress Report is generated from the Shire's integrated planning system, "interplan". The report reflects the progress of individual actions, which are linked to Council's Strategic Plan. This ensures that each employee is working towards achieving the strategic direction of the Council.
3. The person responsible for an action or task in interplan is required to provide an update each month, giving an indication of how the action is progressing. Key Performance Indicators (KPIs) are also updated. This information is collated by interplan to provide an overview of how the organisation is performing.

DETAILS

4. The Quarterly Progress Report for the period 1 April 2015 to 30 June 2015 is presented at (Attachment 1). This completes the progress reporting for the 2014/2015 year.
5. The report shows the progress of the actions and Key Performance Indicators from the Corporate Business Plan, *Kalamunda Achieving*. The report also shows the progress of the Shire against the goals set out in Council's Strategic Plan to 2023, *Kalamunda Advancing*.

Quarterly Progress Against Goals

6. Each business unit in the Shire has a business plan, which contains the actions to be achieved in the 2014/2015 year. Each of these actions is linked to a strategy, outcome and goal in the Strategic Plan adopted by Council.
7. Of the 376 actions monitored across the organisation, 318 (or 85%) are at 90% or more of their progress target for the year to date. Only 23 actions (6%) are at less than 70% of their progress target. This has improved since last quarter. Progress is good against all six goals of the Strategic Plan.

8. The three actions listed as "Actions With No Target" are those that are not due to start until next year.

Key Performance Indicators

9. Performance against the Shire's corporate KPIs is shown. At this stage, four of the annual KPIs have not been updated. All measures have been derived from the Shire's Strategic Plan, to be reported to Council and the community.
10. Of the 18 KPIs, for the year 1 July 2014 - 30 June 2015
 - Six are at or exceeding their target
 - Seven are within 10% of their target
 - Four have not been updated
 - One is below 10% of its target.
11. The "off-track" KPI is *Corporate efficiency - Management of Major Projects*. The progress of the Shire's major projects was estimated at 100% in June 2015. The KPI was not updated in five of the preceding months, so the average for the year has been affected.
12. Business unit managers are reminded regularly of the importance of updating their actions, tasks and KPIs in interplan. In 2015/2016, managers will be provided with written copies of their business plans, and required to sign to acknowledge that they are aware of their responsibilities.
13. Please note that the "traffic light" indicator on the Report only relates to the month of June 2015, not to the whole quarter.

Major Projects

14. The Corporate Business Plan, *Kalamunda Achieving*, sets out a number of Priority Actions for the Shire for the four-year period to 30 June 2018. The progress of the Priority Actions for 2014/2015 is shown in the Major Projects section of the Report.
15. The Corporate Business Plan is currently under review for the new financial year.
16. The majority of actions are on track (228 out of a total of 246). Only one action is off-track (indicated by a red traffic light). A number of actions had previously been deferred due to the local government reform process. These are now being reassessed. Comments indicating the status of all actions and their current progress are included in pages 6 to 70 of the report.

STATUTORY AND LEGAL CONSIDERATIONS

17. Nil.

POLICY CONSIDERATIONS

18. Nil.

COMMUNITY ENGAGEMENT REQUIREMENTS

19. The report is presented to keep Council informed of the organisation's progress. The community is advised of the Shire's achievements and progress via the Annual Report.

FINANCIAL CONSIDERATIONS

20. Financial progress is reported monthly via the Monthly Financial Statements.

STRATEGIC COMMUNITY PLAN

Strategic Planning Alignment

21. *Kalamunda Advancing: Strategic Community Plan to 2023*
OBJECTIVE 6.7 – To provide a business environment that strives for continuous improvement through the use of highly effective business systems and processes.
Strategy 6.7.4 Develop and maintain information systems to capture, monitor and compare corporate data and performance.

SUSTAINABILITY

Social Implications

22. Nil.

Economic Implications

23. Nil.

Environmental Implications

24. Nil.

RISK MANAGEMENT CONSIDERATIONS

- 25.
- | Risk | Likelihood | Consequence | Rating | Action/Strategy |
|--|------------|-------------|--------|---|
| The Shire fails to carry out the actions set out in the corporate Business Plan. | Unlikely | Major | Medium | Regular reporting of action progress to CEO, Directors and Council to ensure that performance is monitored and managed. |

Risk	Likelihood	Consequence	Rating	Action/Strategy
KPIs are not met – standard of customer service declines.	Possible	Major	High	Regular reporting of KPI achievement to CEO, Directors and Council to ensure that performance is monitored and managed.

OFFICER COMMENT

26. Nil.

Voting Requirements: Simple Majority

OFFICER RECOMMENDATION (C&C 29/2015)

That Council:

1. Receives the Quarterly Progress Report for April – June 2015 (Attachment 1).

Moved:

Seconded:

Vote:

Attachment 1

Quarterly Progress Report for April – June 2015

[Click HERE to go directly to the document](#)

Declaration of financial / conflict of interests to be recorded prior to dealing with each item.

30. Shire of Kalamunda Standing Orders Local Law

Previous Items	
Responsible Officer	Chief Executive Officer
Service Area	Governance & PR
File Reference	LE-LOL-20
Applicant	N/A
Owner	N/A
Attachment 1	Proposed Standing Orders Local Law

PURPOSE

1. To consider repealing the current Standing Orders local law and replacing it with a revised version (Attachment 1).

BACKGROUND

2. The Standing Orders, or meeting procedures, provide rules and guidelines for the conduct of meetings.
3. The current Standing Orders local law was gazetted in August 1999, with amendments published in December 2003, following a review at that time. A further review was commenced in February 2010 but was abandoned due to a number of technical issues.
4. In the time since the last amendments were made to the local law, some inconsistencies and lack of clarity have been identified. There have also been changes to legislation (such as the introduction of the Rules of Conduct for elected members), which may be appropriate to have reflected in the local law.
5. The process for creating a local law is outlined in section 3.12 of the *Local Government Act 1995* (the Act) and requires that a local law be reviewed every eight (8) years.

DETAILS

6. The proposed Standing Orders local law currently before Council for consideration has been prepared based on current industry standards, with modifications to suit the circumstances of current practice at the Shire of Kalamunda (Shire).
7. The Shire's lawyers, McLeods Barrister and Solicitors have also provided input into the drafting of the local law to ensure consistency, compliance with legislative requirements and acceptance by the WA Parliament's Joint Standing Committee on Delegated Legislation.
8. A workshop was conducted with councillors in July 2015, to clarify the differences between the existing and proposed local law and seek feedback on any further changes that might be required.

-
9. Once Council resolves to make a new local law, state-wide and local public notice must be given of the proposed local law, and 42 days allowed for the public to make submissions. At the end of the submission period, Council may proceed with adopting the local law, or may choose to not proceed. Minor amendments may be made before the local law is adopted (if it is proposed to make a local law significantly different from that advertised, the process must be re-started).

STATUTORY AND LEGAL CONSIDERATIONS

10. Section 3.12 of the *Local Government Act 1995*.

POLICY CONSIDERATIONS

11. Nil.

COMMUNITY ENGAGEMENT REQUIREMENTS

12. If Council resolves to make the new local law, state-wide and local public notice will be given, and public submissions invited.

FINANCIAL CONSIDERATIONS

13. The only financial implications arising from the adoption of this local law will be the cost of advertising as required by the legislation. These costs will be met from current budget allocations.

STRATEGIC COMMUNITY PLAN

Strategic Planning Alignment

14. *Kalamunda Advancing: Strategic Community Plan to 2023*
OBJECTIVE 6.2 - To ensure local laws are upheld.

Strategy 6.2.1 Develop, implement and monitor all local laws across the Shire to ensure they are relevant and realistic.

SUSTAINABILITY

Social Implications

15. Nil.

Economic Implications

16. Nil.

Environmental Implications

17. Nil.

RISK MANAGEMENT CONSIDERATIONS

18.	Risk	Likelihood	Consequence	Rating	Action/Strategy
	That Council will not approve the proposed new local law	Unlikely	Minor	Medium	Ensure Council is aware that the legislation requires a review of local laws every eight years.

OFFICER COMMENT

19. Following the workshop on July 2015, clarification was sought from the Shire’s lawyers with respect to a number of issues raised. All of the changes requested at the workshop have been included in the proposed local law, with the exception of a provision that involves concurrent debate.
20. The Shire’s lawyer provided the following comments with respect to concurrent debate:-

5. - Concurrent debate

It is common, both at local government meetings and meetings generally, for notice to be given of a foreshadowed alternative motion. There are obvious benefits to this practice. However, like you, I am not aware of that practice generally being the subject of specific provisions in standing orders or meeting procedures. An exception is clause 9.17 of the City of Gosnells Standing Orders Local Law 2002 which states –

- ‘(1) Should a Member wish to negate a substantive motion and have Council consider a new substantive motion on the matter with different intent, the Member must foreshadow the new substantive motion prior to the right of reply.*
- (2) Should a substantive motion be lost, the Presiding Member will call upon the Member who foreshadowed the new substantive motion to move the proposed motion.*
- (3) Once moved and seconded, the foreshadowed motion becomes the substantive motion and the same procedures and rules of debate apply to this motion as any other motion.*
- (4) If more than one foreshadowed motion is proposed for any item before the Council, the Presiding Member shall deal with them in the order in which they were presented.’*

You also referred to the proposal for concurrent debate to occur in relation to a motion that has been moved and seconded, as well as a foreshadowed alternative motion. I am not aware of any standing orders, or more generally in the meeting procedures of any local government, that adopts this practice. It seems to me that it would be difficult for a presiding member to manage concurrent debates of this type. The Shire’s proposed standing orders include clause 10.6 requiring that only one substantive motion be debated at any time. As far as I am aware, all local governments have similar clauses and meetings are conducted on the basis of the principles underlying that clause.

21. As the initial draft local law did not address foreshadowed motions, similar clauses to those contained in local laws from other local governments have now been added.
22. In addition, amendments have been made to Clauses 3.4, 3.5, 5.1, 5.4, 6.17 and 10.2 to include references that mean these clauses also apply to a Committee meeting.
23. Section 3.12 (2) of the Act requires that the presiding person is to give notice of the purpose and effect of the proposed local law in the prescribed manner. This requirement is covered in Point 2 of the Officer Recommendation.

Voting Requirements: Simple Majority

OFFICER RECOMMENDATION (C&C 30/2015)

That Council:

1. Gives state-wide and local public notice that it proposes to make a new local law, the Shire of Kalamunda Standing Orders Local Law 2015 as per (Attachment 1).
2. Notes that the purpose and effect of the proposed local law is:-
 - (1) The purpose of the local law is to provide for the conduct of meetings of the Council, Committees and electors.
 - (2) This local law is intended to result in:
 - (a) better decision-making at meetings;
 - (b) the orderly and efficient conduct of meetings;
 - (c) greater community participation and understanding of the business of the Council; and
 - (d) more open and accountable local government.

Moved:

Seconded:

Vote:

Attachment 1

DRAFT Shire of Kalamunda Standing Orders Local Law

[Click HERE to go directly to the document](#)

Declaration of financial / conflict of interests to be recorded prior to dealing with each item.

31. Naming of the New Forrestfield Skate Park

Previous Items	
Responsible Officer	Manager Community Development
Service Area	Office of the CEO
File Reference	
Applicant	
Owner	Shire of Kalamunda

PURPOSE

1. For Council to consider endorsing the proposed new name of the Forrestfield Skate Park.

BACKGROUND

2. In the 2014/15 budget, Council included \$492,616 to undertake the development of a new skate park in Forrestfield, located at Hartfield Park Reserve on the corner of Hale and Hartfield Roads.
3. The construction of the new skate park is now nearing completion and is anticipated to be completed by the end of August.
4. As part of the community consultation process in the design and development of a new skate park, the community were invited to submit suggestions for a new name for the skate park. These names were then assessed and the top five were put out for a community poll as to their preferred name.
5. The community voting period closed on 6 June 2015, with 379 votes received.
6. Council is now presented with the outcome of the community poll on the naming of the Forrestfield Skate Park to consider endorsing the proposed new name.

DETAILS

7. The process of selecting a new name for the Forrestfield Skate Park included the following:
 - A three week period for residents and local community to submit naming suggestions.
 - Shortlisting public submissions into a top five conducted by a selection panel.
 - Top five names to be put up on an online voting poll on the Shire's website.

Top three community votes names from the online poll presented to council for the final decision.
8. In total, 54 submissions were received for the new name of the Forrestfield Skate Park from the general community.

-
9. The submissions received were assessed and condensed into a top five and the community were then provided with an opportunity to vote on their preferred name.
10. The top five names and explanations are provided below:
- 605SK8 – Refers to the Forrestfield postcode, 6058, and the skate park itself.
 - Wanju Park – Is the Noongar word for welcome.
 - The Field – Refers to the Forrestfield area and was a name that was put up on the skate park’s Facebook page and received a lot of support on the page.
 - Moorditj Djena – is Noongar meaning Strong Feet
 - Skateway – referring to the Gateway roadway connectivity project
11. During the voting period, a total of 356 votes were received from the community with the outcome as follows:
1. 605SK8 (159 votes)
 2. Wanju Park (75 votes)
 3. The Field (73 votes)
 4. Skateway (26 votes)
 5. Moorditj Djena (23 votes)
12. In summary, the preferred name as voted by the community was 605SK8, which received 84 more votes than the next name option.

STATUTORY AND LEGAL CONSIDERATIONS

13. Required checks for Trademarks, Registered Business names, Domain names and copyright have been done for the three named and all are available to be used.

POLICY CONSIDERATIONS

14. Nil.

COMMUNITY ENGAGEMENT REQUIREMENTS

15. The community has been extensively engaged throughout the entire skate park project.
16. In particular, a significant amount of community consultation was undertaken to ensure that the community had the opportunity to participate in submitting a skate park name.

Some of the consultation methods included the following:

- Mail out to local residents within a 500m radius of the skate park site
- Emails to local community and sporting clubs of Forrestfield
- Liaising with DSR aboriginal consultants to assist with distributing the skate park submission forms to their contacts within Forrestfield
- Posts on the “Help Design the Forrestfield Skate Park” Facebook page

- Flyers displayed at Hartfield Park Recreation Centre, High Wycombe Recreation Centre and all four Shire libraries.

17. Overall, the community consultation program has been successful, with 54 name suggestions received and 379 votes placed on preferred names.

FINANCIAL CONSIDERATIONS

18. All associated signage costs with the new skate park name, will be incorporated within the skate park construction budget.

STRATEGIC COMMUNITY PLAN

Strategic Planning Alignment

19. *Kalamunda Advancing: Strategic Community Plan to 2023*

OBJECTIVE 1.3 - To be a community that listens to, engages with and involves its young people in decision making.

OBJECTIVE 1.9 - To provide high quality community facilities to meet the needs of our current and future community.

SUSTAINABILITY

Social Implications

20. Providing the community with the opportunity to have input not only into the design of the new skate park but also the name, will greatly assist in ensuring that the community take a high level of ownership of the site.

Economic Implications

21. Nil.

Environmental Implications

22. Nil.

RISK MANAGEMENT CONSIDERATIONS

23.

Risk	Likelihood	Consequence	Rating	Action/Strategy
The community dislike the selected name for the skate park.	Unlikely	Minor	Low	Significant community consultation has been undertaken throughout the naming process to ensure that the community have been involved in the selection of the preferred name

OFFICER COMMENT

24. The new Forrestfield Skate Park is located within Hartfield Park, on the corner of Hale and Hartfield Roads.
25. The project has included a significant amount of consultation throughout the design and development process, with the naming of the skate park being seen as a further opportunity to involve the community and ensure that a high level of ownership is taken of the facility upon completion.
26. The community voting process resulted in 605SK8 being voted as the preferred name of the site.
27. 605SK8 is a synergy of the Forrestfield postcode "6058" together with the word "Skate – SK8".
28. Whilst Council may decide to not support the proposed name as voted by the community, this option is not recommended as the proposed name is considered appropriate for the site and has been as the result of a significant community engagement process.
29. Once the name has been endorsed, details of the size, design and location of relevant signage will be arranged, with an opening event proposed to occur in mid-late September.
30. It is recommended that Council endorse the new name for the Forrestfield Skate Park as being 605SK8. Furthermore, that all those who participated in the naming process be advised in writing of the outcome.

Voting Requirements: Simple Majority

OFFICER RECOMMENDATION (C&C 31/2015)

That Council:

1. That Council endorse the name of the Forrestfield Skate Park to be "605SK8".
2. Requests the CEO write to all those who participated in the Forrestfield Skate park naming process and advise of the new name being "605SK8"

Moved:

Seconded:

Vote:

Declaration of financial / conflict of interests to be recorded prior to dealing with each item.

32. Kalamunda Performing Arts Centre – Licence Agreement

Previous Items	
Responsible Officer	Manager Community Development
Service Area	Office of the CEO
File Reference	
Applicant	N/A
Owner	Shire of Kalamunda
Attachment 1	Licence Agreement

PURPOSE

1. For Council to endorse the new licence agreement between the Minister for Education and the Shire of Kalamunda relative to the shared usage of the Kalamunda Performing Arts Centre.

BACKGROUND

2. A licence agreement for the Kalamunda Performing Arts Centre complex was entered into between the two parties in October 1995 following a joint funding arrangement for the construction of this community facility.
3. The Kalamunda Performing Arts Centre was jointly funded by the Shire of Kalamunda and the Minister for Education and was officially completed in 1996.
4. An extension to and variation of the licence agreement between the Minister for Education and the Shire of Kalamunda was endorsed in 2005.

DETAILS

5. As per the agreement, the Kalamunda Senior High School can access the Performing Arts Teaching Area exclusively during school hours of school term periods.
6. In addition, Kalamunda Senior High School can access the Theatre via Shire booking processes for up to 17 days per year during school term periods.
7. In return for booking entitlements and as part of the partnership arrangement, the Shire recovers all associated operating costs relative to the Teaching Area and 30% of operational costs relative to the Theatre, from the Department of Education.
8. The current licence agreement between the two parties expires on 13 October 2015.
9. The Kalamunda Senior High School, on behalf of the Minister for Education initially approached the Shire to review and renew the current Agreement in 2014.

-
10. Further to the review undertaken in 2014 involving both parties, a new agreement has collectively been developed and agreed upon with the same intent to that of the current agreement.
 11. The only significant change is the disbandment of the Management Committee and the removal of such references within the agreement.

STATUTORY AND LEGAL CONSIDERATIONS

12. In accordance with the terms of the existing agreement which ceases on 13 October 2015, a new agreement needs to be established to maintain the usage relationship relative to the Kalamunda Performing Arts Centre.

POLICY CONSIDERATIONS

13. Nil.

COMMUNITY ENGAGEMENT REQUIREMENTS

14. Representatives from the Minister for Education (Department of Education), Kalamunda Senior High School and Shire Officers have been consulted and collectively worked together to develop the new agreement.

FINANCIAL CONSIDERATIONS

15. The Shire invoices and recovers a portion of operational costs relative to the Teaching Area and Theatre, as set out in Annexure B of the agreement which annually equates to approximately \$23,000.

STRATEGIC COMMUNITY PLAN

Strategic Planning Alignment

16. *Kalamunda Advancing: Strategic Community Plan to 2023*

OBJECTIVE 1.9 To provide high quality community facilities to meet the needs of our current and our future community.

Strategy 1.9.4 - Optimise community facilities through the establishment of multifunctional facilities and co-location of user groups where applicable.

SUSTAINABILITY

Social Implications

17. Nil.

Economic Implications

18. Nil.

Environmental Implications

19. Nil.

RISK MANAGEMENT CONSIDERATIONS

20.

Risk	Likelihood	Consequence	Rating	Action/Strategy
That the new Agreement will not be approved.	Unlikely	Minor	Low	The intent of the new agreement and its implications have not altered to that of the current agreement which has been effective.

OFFICER COMMENT

21. The Shire of Kalamunda and Kalamunda Senior High School (Department of Education) have had a long-standing, successful relationship which has been evident both through the shared use of the Kalamunda Performing Arts Centre and Kosteria Reserve.
22. The disbandment of the Management Committee that met twice yearly is the only significant change. The Committee has ceased due to its purpose no longer having any relevance. It was initially established due to the lack of appointed staff based at the facility, however there has been such presence for the past six years and a strong program of activities and bookings.
23. The existing agreement between the Minister for Education and Shire of Kalamunda relative to the Kalamunda Performing Arts Centre has been effective in ensuring a sound, shared operational relationship between the two parties.
24. The intent of the new agreement that will take effect as of October 2015 has not changed to that of the current agreement.

Voting Requirements: Simple Majority

OFFICER RECOMMENDATION (C&C 32/2015)

That Council:

1. Endorses the new Agreement between the Minister for Education and the Shire of Kalamunda relative to the shared usage of the Kalamunda Performing Arts Centre.

Moved:

Seconded:

Vote:

Attachment 1

Kalamunda Performing Arts Centre – Licence Agreement

[Click HERE to go directly to the document](#)

- 10.0 MOTIONS OF WHICH PREVIOUS NOTICE HAS BEEN GIVEN**

- 11.0 QUESTIONS BY MEMBERS WITHOUT NOTICE**

- 12.0 QUESTIONS BY MEMBERS OF WHICH DUE NOTICE HAS BEEN GIVEN**

- 13.0 URGENT BUSINESS APPROVED BY THE PRESIDING MEMBER OR BY
 DECISION**

- 14.0 MEETING CLOSED TO THE PUBLIC**

- 15.0 CLOSURE**