

Corporate & Community Services Committee Meeting

Agenda for Monday 18 November 2013



**shire of
kalamunda**

NOTICE OF MEETING CORPORATE & COMMUNITY SERVICES COMMITTEE

Dear Councillors

Notice is hereby given that the next meeting of the Corporate & Community Services Committee will be held in the Council Chambers, Administration Centre, 2 Railway Road, Kalamunda on **Monday 18 November 2013 at 6.30pm**. Dinner will be served prior to the meeting, at 5.30pm.



Rhonda Hardy
Chief Executive Officer
13 November 2013

Our Vision and Our Values

Our Vision

The Shire will have a diversity of lifestyle and people. It will take pride in caring for the natural, social, cultural and built environments and provide opportunities for people of all ages.

Our Core Values

Service – We deliver excellent service by actively engaging and listening to each other.

Respect – We trust and respect each other by valuing our difference, communicating openly and showing integrity in all we do.

Diversity – We challenge ourselves by keeping our minds open and looking for all possibilities and opportunities.

Ethics – We provide honest, open, equitable and responsive leadership by demonstrating high standards of ethical behavior.

Our Aspirational Values

Prosperity – We will ensure our Shire has a robust economy through a mixture of industrial and commercial development.

Harmony – We will retain our natural assets in balance with our built environment.

Courage – We take risks that are calculated to lead us to a bold new future.

Creativity – We create and innovate to improve all we do.

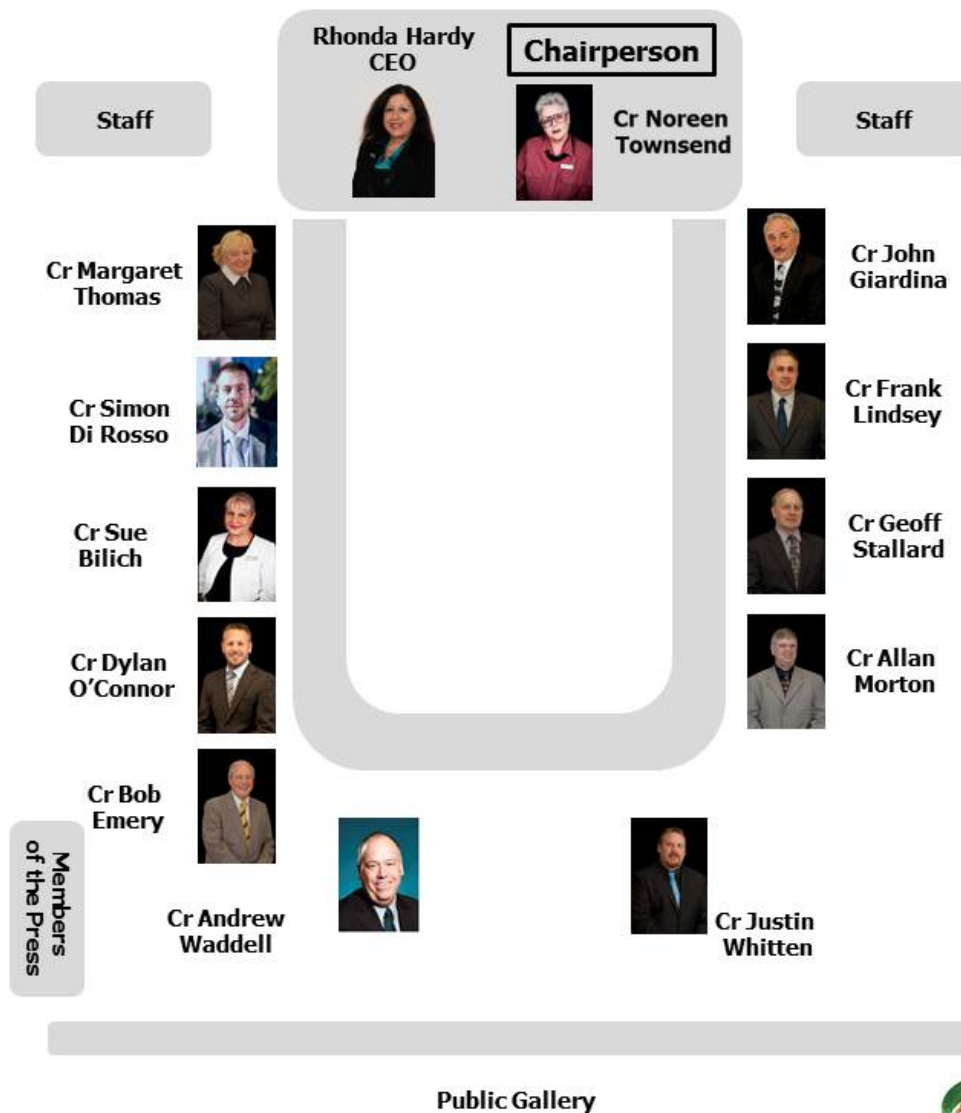


INFORMATION FOR THE PUBLIC ATTENDING COMMITTEE OR COUNCIL MEETINGS

Welcome to this evening's meeting. The following information is provided on the meeting and matters which may affect members of the public.

If you have any queries related to procedural matters, please contact a member of staff.

Council Chambers – Seating Layout



Standing Committee Meetings – Procedures

1. Standing Committees are open to the public, except for Confidential Items listed on the Agenda.
2. Shire of Kalamunda Standing Committees have a membership of all 12 Councillors.
3. Unless otherwise advised a Standing Committee makes recommendations only to the next scheduled Ordinary Council Meeting.
4. Members of the public who are unfamiliar with meeting proceedings are invited to seek advice prior to the meeting from a Shire Staff Member.
5. Members of the public are able to ask questions at a Standing Committee Meeting during Public Question Time. The questions should be related to the purposes of the Standing Committee.
6. Members of the public wishing to make a comment on any Agenda item may request to do so by advising staff prior to commencement of the Standing Committee Meeting.
7. Comment from members of the public on any item of the Agenda is usually limited to three minutes and should address the Recommendations at the conclusion of the report.
8. To facilitate the smooth running of the meeting, silence is to be observed in the public gallery at all times except for Public Question Time.
9. All other arrangements are in general accordance with Council's Standing Orders, the Policies and decision of person chairing the Committee Meeting.

Emergency Procedures

Please view the position of the Exits, Fire Extinguishers and Outdoor Assembly Area as displayed on the wall of Council Chambers.

In case of an emergency follow the instructions given by Council Personnel.

We ask that you do not move your vehicle as this could potentially block access for emergency services vehicles.

Please remain at the assembly point until advised it is safe to leave.

INDEX

1.0	OFFICIAL OPENING	6
2.0	ATTENDANCE, APOLOGIES AND LEAVE OF ABSENCE PREVIOUSLY APPROVED.....	6
3.0	PUBLIC QUESTION TIME.....	6
4.0	PETITIONS/DEPUTATIONS	6
5.0	CONFIRMATION OF MINUTES OF PREVIOUS MEETING.....	6
6.0	ANNOUNCEMENTS BY THE PRESIDING MEMBER WITHOUT DISCUSSION.....	6
7.0	MATTERS FOR WHICH MEETING MAY BE CLOSED	7
8.0	DISCLOSURE OF INTERESTS.....	7
9.0	REPORTS TO COUNCIL	7
	63. DEBTORS AND CREDITORS REPORTS FOR THE PERIOD ENDED 31 OCTOBER 2013.....	8
	64. RATES DEBTORS REPORT FOR THE PERIOD ENDED 31 OCTOBER 2013.....	49
	65. QUARTERLY REPORT – KALAMUNDA COMMUNITY CARE SEPTEMBER 2013	53
	66. APPOINTMENT OF COMMUNITY REPRESENTATIVES TO THE DISABILITY ACCESS AND INCLUSION ADVISORY COMMITTEE (DAIAC)	64
	67. APPOINTMENT OF COMMUNITY REPRESENTATIVES TO MANAGEMENT AND ADVISORY COMMITTEES.....	68
	68. PICKERING BROOK HERITAGE GROUP INC – SEEKING APPROVAL OF SUBSIDY OF OCCUPANCY COSTS	74
	69. ZIG ZAG SCENIC DRIVE COMMUNITY ACTION PLAN – DISCUSSION PAPER ON OPTIONS AND POSSIBILITIES – PUBLIC CONSULTATION	78
10.0	MOTIONS OF WHICH PREVIOUS NOTICE HAS BEEN GIVEN.....	85
11.0	QUESTIONS BY MEMBERS WITHOUT NOTICE.....	85
12.0	QUESTIONS BY MEMBERS OF WHICH DUE NOTICE HAS BEEN GIVEN.....	85
13.0	URGENT BUSINESS APPROVED BY THE PRESIDING MEMBER OR BY DECISION.....	86
14.0	MEETING CLOSED TO THE PUBLIC.....	86
15.0	CLOSURE	86

AGENDA

1.0 OFFICIAL OPENING

2.0 ATTENDANCE, APOLOGIES AND LEAVE OF ABSENCE PREVIOUSLY APPROVED

3.0 PUBLIC QUESTION TIME

A period of not less than 15 minutes is provided to allow questions from the gallery on matters relating to the functions of this Committee. For the purposes of Minuting, these questions and answers will be summarised.

4.0 PETITIONS/DEPUTATIONS

5.0 CONFIRMATION OF MINUTES OF PREVIOUS MEETING

- 5.1 That the Minutes of the Corporate & Community Services Committee Meeting held on 16 September 2013 are confirmed as a true and accurate record of the proceedings.

Moved:

Seconded:

Vote:

Statement by Presiding Member

"On the basis of the above Motion, I now sign the minutes as a true and accurate record of the meeting of 16 September 2013".

- 5.2 That the Minutes of the Special Corporate & Community Services Committee Meeting held on 21 October 2013 are confirmed as a true and accurate record of the proceedings.

Moved:

Seconded:

Vote:

Statement by Presiding Member

"On the basis of the above Motion, I now sign the minutes as a true and accurate record of the meeting of 21 October 2013".

6.0 ANNOUNCEMENTS BY THE PRESIDING MEMBER WITHOUT DISCUSSION

7.0 MATTERS FOR WHICH MEETING MAY BE CLOSED

7.1 Nil.

8.0 DISCLOSURE OF INTERESTS

8.1 Disclosure of Financial and Proximity Interests

- a. Members must disclose the nature of their interest in matters to be discussed at the meeting. (Sections 5.60B and 5.65 of the *Local Government Act 1995*.)
- b. Employees must disclose the nature of their interest in reports or advice when giving the report or advice to the meeting. (Sections 5.70 and 5.71 of the *Local Government Act 1995*.)

8.2 Disclosure of Interest Affecting Impartiality

- a. Members and staff must disclose their interest in matters to be discussed at the meeting in respect of which the member or employee had given or will give advice.

9.0 REPORTS TO COUNCIL

Please Note: declaration of financial/conflict of interests to be recorded prior to dealing with each item.

Declaration of financial / conflict of interests to be recorded prior to dealing with each item.

63. Debtors and Creditors Reports for the Period Ended 31 October 2013

Previous Items	N/A
Responsible Officer	Director Corporate and Community Services
Service Area	Finance
File Reference	FI-CRS-002
Applicant	N/A
Owner	N/A
Attachment 1	Summary of Debtors for the period ended 31 October 2013
Attachment 2	Summary of Creditors for the period ended 31 October 2013
Attachment 3	Creditors Payments for the period 02 October to 23 October 2013

PURPOSE

1. To receive a monthly report on debtors and creditors.
2. To receive creditor accounts paid during the period 02 October to 24 October 2013 (Attachment 3).

BACKGROUND

3. Attached are the reports detailing aged Debtors (Attachment 1) and Creditors (Attachment 2) as at 31 October 2013 and creditors Payments for the Period 02 to 24 October 2013 (Attachment 3).
4. Council has requested reports detailing outstanding debtors and creditors on a monthly basis.

DETAILS

Debtors

5. Invoices over 30 days total \$22,137.76. Debts of significance for which reminder notices, where applicable, have been sent:
 - Bronzewing Investments \$5,599.00 – mulching/plant supply;
 - Western Power \$7,695.10 – private works; and
 - Zig Zag Café Kalamunda \$4,899.32 – lease/utilities.
6. Invoices over 60 days total \$3,851.89. Debts of significance:
 - Delta Civil Pty Ltd \$1,995.84 – private works.
7. Invoices over 90 days total \$41,669.08. Debts of significance:
 - Forrestfield Soccer Club \$4,394.18 - utilities (Direct Debit);
 - Kalamunda Farmers Market \$3,345.00 – trading in thoroughfares (Direct Debit);
 - Lesmurdie Tennis Club Inc. \$25,500.00 – contribution to extension;

- and
 Zig Zag Café Kalamunda \$3,421.73 – lease/utilities.

Creditors

8. Payments totalling \$4,358,208.61 were made during the month of October 2013. Standard payment terms are 30 days from the end of month, with local business and contractors on 14 day terms.

9. Significant Municipal Payments made in the month were:

Supplier	Purpose	\$
Australian Tax Office	PAYG	293,942.30
Beaver Trees	Tree Removal/Pruning – various locations	72,568.10
Cleanaway	Domestic and Recycling Rubbish Collection	236,106.54
Department of Fire and Emergency Services	2013/14 ESL Quarterly Contribution	1,502,051.60
DMC Cleaning	Cleaning of various shire buildings	50,344.83
EMRC	Domestic /Waste Red Hill Tip Charges	207,964.30
IT Vision	Annual License Renewal	83,224.90
Lovegrove Turf Services	Turf Maintenance/Services – various locations	94,853.00
MPK Tree Services	Tree Removal/Pruning – various locations	43,841.88
Perth Waste	Bulk Bin Services – green waste disposal	65,471.43
S & J Developments	Part payment – Norm Sadler viewing platform construction IT Equipment Lease	50,511.78
Synergy	Power Charges	158,766.95
WA Local Govt Superannuation	Super Contributions	166,232.96
Western Australian Treasury Corporation	Repayment of Loans No 223,208 & 215 Fixed Component	49,124.18

10. These payments total \$3,075,004.75 and represent 70.5% of all payment for the month.

Trust Account Payments

11. The Trust Accounts maintained by the Shire relate to the following types:

- Cell 9 Trust
- POS Trust
- BCITF Levy
- Building Licence Levy
- Unclaimed Monies

The following payments were made from the trust accounts in the month of October 2013.

12. **Cell 9 Transactions**

Date	Description	Amount \$
25/10/2013	ATO – BAS Payment September 2013 Lenihan St, Wattle Grove	23,556.18
21/10/2013	McLeods Solicitors – Legal Fees	776.73

23/10/2013 Shire of Kalamunda – Project management costs 1,476.04
August 2013

Building and Construction Industry

Date	Description	Amount \$
01/10/2013	BCITF Training Fund Levy October 2013	19,838.45

Building Commission

Date	Description	Amount \$
31/10/2013	Building Licence Levy October 2013	13,892.47

Forrestfield Industrial Area Trust

Date	Description	Amount \$
9/10/2013	Shire of Kalamunda Project Management fees -August 2013	632.50
10/10/2013	Shire of Kalamunda Project Management fees -September 2013	613.80

STATUTORY AND LEGAL IMPLICATIONS

13. In accordance with the requirements of the *Local Government (Financial Management) Regulations 1996 (Regulation 13)* a list of accounts paid by the CEO is to be prepared each month and presented in the manner required as per the regulation.

POLICY IMPLICATIONS

14. Nil.

PUBLIC CONSULTATION/COMMUNICATION

15. Nil.

FINANCIAL IMPLICATIONS

16. Nil.

STRATEGIC AND SUSTAINABILITY IMPLICATIONS

Strategic Planning Implications

15. *Shire of Kalamunda Strategic Plan to 2023*

OBJECTIVE 6.8 – To ensure financial sustainability through the implementation of effective financial management systems and plans.

Strategy 6.8.4 Provide effective financial services to support the shire's operation and to meet sustainability planning, reporting and accountability requirements.

SUSTAINABILITY

Social Implications

17. Nil.

Economic Implications

18. Nil.

Environmental Implications

19. Nil.

RISK MANAGEMENT CONSIDERATIONS

Debtors

Risk	Consequence	Likelihood	Mitigation
20. The Shire is exposed to the potential risk of the debtor failing to make payment which it is obligated to do. This will result in the disruption of cash flows and increased collection costs. The loss may be complete or partial and can arise in a number of circumstances.	Medium	Low	Monitor sundry debtors accounts outstanding and take appropriate means to efficiently collect the amounts due; Provide sundry debtors direct debit option to pay outstanding collectable amount; Proceed to legal for those accounts where all other avenues have been exhausted.

Creditors

Risk	Consequence	Likelihood	Mitigation
21. If the Shire defaults on a payment of a creditor, the Shire runs the risk of a negative credit record resulting in a potential future disruption on cash flows and ability to obtain credit.	High	Low	Monitor expenditure is in line with budgets; Ensure cash flows are strictly monitored; Prepare quarterly forecasts to ensure expenditure is in line with expected revenues; Capture all invoices payable in time and keep within the terms of trade/contract; and Ensure adequate communication is made to all parties for disputed items.

OFFICER COMMENT

22. Nil.

Voting Requirements: Simple Majority

OFFICER RECOMMENDATION (C&C 63/2013)

That Council:

1. Receives the outstanding debtors (Attachment 1) and creditors (Attachment 2) reports for the period ended 31 October 2013.
2. Receives the list of creditors paid during the month of October 2013 (Attachment 3) in accordance with the requirements of the *Local Government (Financial Management) Regulations 1996 (Regulation 13)*.
3. Receives the list of payments made from the Trust accounts in October 2013 as noted in point 12 above in accordance with the requirements of the *Local Government (Financial Management) Regulations 1996 (Regulation 12)*.

Moved:

Seconded:

Vote:

Attachment 1

**SHIRE OF KALAMUNDA
 SUMMARY OF DEBTORS
 FOR THE PERIOD ENDED 31st October 2013**

AMOUNT	DEBTOR	DETAILS	STATUS
>90 days			
\$4,394.18	Forrestfield United Soccer Club WA Inc ^	Operational Expenses	Fortnightly Direct Debits in place - \$600.
\$3,345.00	Kalamunda Farmers Market ^	Trading in Thoroughfares	Fortnightly Direct Debits in place - \$480. Final deduction 06/02/14
\$25,500.00	Lesmurdie Tennis Club Inc *	Contribution to Extension	The Shire is monitoring.
\$3,421.73	Zig Zag Café Kalamunda ^	Zig Zag Café Lease / Utility Expenses	Debtor has committed to make fortnightly payments of \$1600. Shire is monitoring.
\$5,008.17	90+ Days Debts consisting of amounts under \$1,000.00.		Debtors to be contacted by telephone to advise debt recovery action pending / final notices issued or debt with D&B.
\$41,669.08	Total Debts 90+ Days		
>60 days			
\$1,995.84	Delta Civil Pty Ltd	Private Works	3rd Party responsible for payment - Delta Civil to confirm details.
\$1,856.05	60+ Days Debts consisting of amounts under \$1,000.00.		All debtors to be contacted by telephone / email - copy invoices mailed as required.
\$3,851.89	Total Debts 60+ Days		

> 30 days			
\$5,599.00	Bronzewing Investments	Mulching / Supply of Plants	Reminder invoice to be sent / advised Shire Business Unit.
\$7,695.10	Western Power	Private Works - repair to damaged piping	Reminder Invoice to be sent
\$4,899.32	Zig Zag Café Kalamunda ^	Zig Zag Café Lease / Utility Expenses	As above.
\$3,944.34	30+ Days Debts consisting of amounts under \$1,000.00.		Reminder invoices to be sent.
\$22,137.76	Total Debts 30+ Days		
< 30 days			
\$118,561.91	Total of Current Debts		
-\$2,981.09	Total of Accounts in Credit		
\$183,239.55	Total		
FOOTNOTES			
* Denotes currently in negotiation of invoice amount and details			
^ Denotes payment arrangement in place			

Attachment 2

**SHIRE OF KALAMUNDA
 SUMMARY OF CREDITORS**

FOR THE PERIOD ENDED 31 OCTOBER 2013

Sundry Creditors Trial Balance - Summary Aged Listing

Month End	> 90 days	> 60 days	> 30 days	Current	Total
31/07/2012	\$1,129	\$2,418	\$829,279	\$1,240,322	\$2,073,148
31/08/2012	\$5,953	\$434	\$10,731	\$1,784,665	\$1,801,783
30/09/2012	\$13,713	\$1,630	\$6,362	\$1,036,804	\$1,058,509
31/10/2012	\$923	\$91,135	\$40,634	\$1,275,858	\$1,408,551
30/11/2012	\$8,738	\$4,059	\$10,289	\$1,387,687	\$1,410,773
31/12/2012	\$8,580	-\$454	\$53,987	\$544,597	\$606,710
31/01/2013	\$2,275	-\$4	\$10,756	\$380,050	\$393,077
28/02/2013	-\$191	-\$154	\$8,042	\$500,380	\$508,078
31/03/2013	-\$344	\$6,566	\$5,034	\$163,125	\$174,380
30/04/2013	\$7,253	\$39,057	\$10,266	\$690,585	\$747,161
31/05/2013	\$1,225	\$942	\$14,952	\$1,077,590	\$1,094,709
30/06/2013	\$9,393	\$13,544	\$364,665	\$1,914,271	\$2,301,873
31/07/2013	\$3,168	\$30,928	\$7,860	\$704,407	\$746,364
31/08/2013	\$1,618	\$6,095	\$46,102	\$542,740	\$596,555
30/09/2013	\$3,630	\$53,734	\$7,014	\$383,394	\$447,773
31/10/2013	\$12,120	\$1,454	\$107,830	\$1,566,553	\$1,687,957

Comment

- > 90 days Original Invoices for WA Local Government Association & Colonial 1st State Superannuation not received in Accounts to process
- > 60 days Original Invoices for CallTech Pty Ltd, RedInk Homes & Quick Corporate Australia not received in Accounts to process.
- > 30 days These invoices are paid on the third fortnightly payment run.

Creditor Payments made

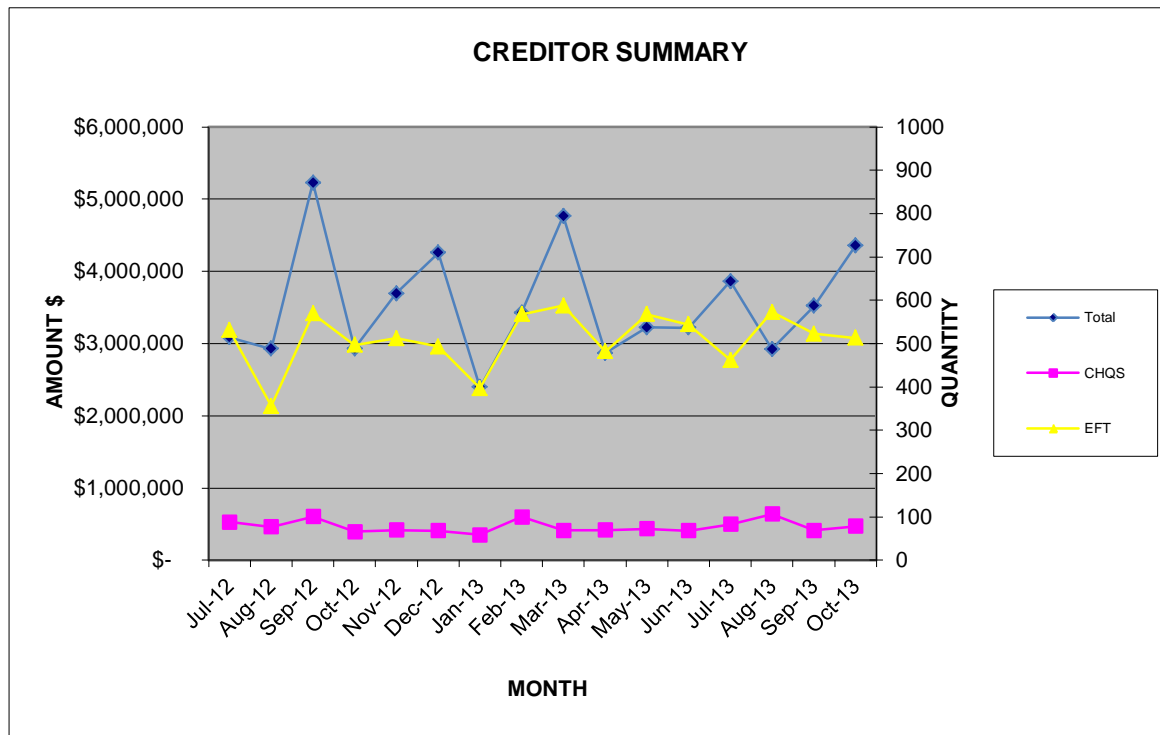
Month	Amount	\$	Quantity		
			Cheques	EFTs	Total
Jul-12	\$	3,085,557	88	531	619
Aug-12	\$	2,928,637	77	356	433
Sep-12	\$	5,229,543	101	569	670
Oct-12	\$	2,931,587	66	497	563
Nov-12	\$	3,692,467	70	512	582
Dec-12	\$	4,255,844	68	493	561
Jan-13	\$	2,396,387	59	397	456
Feb-13	\$	3,426,479	100	568	668
Mar-13	\$	4,766,915	69	588	588

Apr-13	\$ 2,869,343	70	482	552
May-13	\$ 3,222,475	73	568	641
Jun-13	\$ 3,221,716	68	544	612
Jul-13	\$ 3,861,531	83	462	545
Aug-13	\$ 2,924,590	107	573	680
Sep-13	\$ 3,520,038	69	523	592
Oct-13	\$ 4,358,209	79	513	592

*Excludes net staff payroll

*Creditors on 30 day terms are paid on the 28th of the month following.

*Local suppliers are paid on 14 day terms.



Attachment 3

**Shire of Kalamunda
 Creditors Payments 2 October to 23 October 2013**

Chq/EFT	Date	Name	Description	Amount \$
659	02/10/2013	WESTERN AUSTRALIAN TREASURY CORPORATION	LOAN NO 208 INTEREST PAYMENT	11,346.28
660	04/10/2013	LES MILLS AUSTRALIA	MONTHLY LICENCE FEE	977.07
661	09/10/2013	IINET TECHNOLOGIES PTY LTD	INTERNET ACCESS	829.00
662	09/10/2013	AUSTRALIAN TAXATION OFFICE	TAXATION	140,162.09
663	11/10/2013	WESTERN AUSTRALIAN TREASURY CORPORATION	LOAN NO 223 FIXED COMPONENT	35,165.56
664	11/10/2013	COMMONWEALTH BANK - BUSINESS CARD	BUSINESS CORPORATE CARD - VARIOUS PURCHASES	13,271.62
			HACC ACTIVITY OFFICER -	\$40.00
			LIBRARY SERVICES TEAM LEADER -	\$ 485.15
			HACC ACTIVITY OFFICER -	\$40.00
			HEALTHY COMMUNITIES TEAM LEADER -	\$284.13
			FUNCTIONS CO-ORDINATOR -	\$1,805.99
			CO-ORDINATOR PROCUREMENT -	\$1,663.24
			HACC ACTIVITY OFFICER -	\$897.78
			HACC ACTIVITY OFFICER -	\$496.69
			MANAGER HR -	\$6,169.10
			DAY CENTRE CO-ORDINATOR -	\$1,389.54
665	23/10/2013	WESTERN AUSTRALIAN TREASURY CORPORATION	LOAN NO 215 INTEREST PAYMENT	2,612.34
666	23/10/2013	AUSTRALIAN TAXATION OFFICE	TAXATION	153,780.21
EFT31730	27/09/2013	LANDMARK ENGINEERING AND DESIGN	SUPPLY OF PARKWAY DOUBLE BENCH FOR FLEMING RESERVE PLAYGROUND	3,234.00
EFT31731	04/10/2013	DEPARTMENT OF FIRE AND EMERGENCY SERVICES (DFES)	2013/14 ESL QUARTER CONTRIBUTION - EMERGENCY SERVICES LEVY	1,466,731.50
EFT31732		EFT PAYMENT CANCELLED		

**Shire of Kalamunda
 Creditors Payments 2 October to 23 October 2013**

Chq/EFT	Date	Name	Description	Amount \$
EFT31733	10/10/2013	MOTORCHARGE - WRIGHT EXPRESS FUEL CARDS AUSTRALIA LTD	FUEL - PERIOD ENDING 30/09/13	6,108.08
EFT31734	10/10/2013	NEVERFAIL SPRINGWATER LTD (KALA LIB)	BOTTLED WATER SUPPLIES / MAINTENANCE	93.25
EFT31735	10/10/2013	KALAMUNDA GLASS & WINDSCREENS ON WHEELS	GLASS REPAIRS / MAINTENANCE FOR VARIOUS LOCATIONS	2,673.20
EFT31736	10/10/2013	FIRE AND SAFETY WA	FIRE PROTECTION WEAR / SUPPLIES	2,319.13
EFT31737	10/10/2013	JOSHUA HOCKLEY	TECHNICAL SERVICES FOR KALAMUNDA PERFORMING ARTS CENTRE	825.00
EFT31738	10/10/2013	OLK & ASSOCIATES	ARCHITECTURAL SERVICES	1,375.00
EFT31739	10/10/2013	BRUMBY'S KALAMUNDA	CATERING SUPPLIES	32.80
EFT31740	10/10/2013	NEVERFAIL SPRINGWATERLTD (FORRESTFIELD LIB)	BOTTLED WATER SUPPLIES / MAINTENANCE	43.75
EFT31741	10/10/2013	PICTON PRESS	PRINTING OF BROCHURES FOR VARIOUS EVENTS	8,484.77
EFT31742	10/10/2013	ID CONSULTING PTY LTD (INFORMED DECISIONS)	PROFILE ID AND ATLAS ID QUARTERLY SUBSCRIPTION FEE JULY - SEPT 2013	3,630.00
EFT31743	10/10/2013	DOT ULIJN (DOT BLASZCZAK)	PAYMENT TO CONSIGNMENT SUPPLIER FOR GOODS SOLD AT THE ZIG ZAG CULTURAL CENTRE - 01/09/13 - 30/09/13	24.50
EFT31744	10/10/2013	TOP OF THE LADDER GUTTER CLEANING	GUTTER CLEANING SERVICES FOR VARIOUS LOCATIONS	1,826.00
EFT31745	10/10/2013	VIP CARPET AND UPHOLSTERY CLEANING SERVICE	CARPET CLEANING AT VARIOUS LOCATIONS	3,437.00
EFT31746	10/10/2013	RAYMOND MILORAD BOYANICH	RATES REFUND	200.00
EFT31747	10/10/2013	THOMAS JOHNSON	FOOTPATH DEPOSIT REFUND	1,200.00
EFT31748	10/10/2013	ROBYN BEARDSSELL	PAYMENT TO CONSIGNMENT SUPPLIER FOR GOODS SOLD AT THE ZIG ZAG CULTURAL CENTRE - 01/09/13 - 30/09/13	135.10
EFT31749	10/10/2013	PAUL HONEY	FOOTPATH DEPOSIT REFUND	1,000.00
EFT31750	10/10/2013	DAPHNE LEMKE	TRAVEL COMMUNITY VISITORS SCHEME REFUND	15.00

**Shire of Kalamunda
 Creditors Payments 2 October to 23 October 2013**

Chq/EFT	Date	Name	Description	Amount \$
EFT31751	10/10/2013	KEVIN FRANCIS KAVANAGH	RATES REFUND	1,208.79
EFT31752	10/10/2013	LISA DUNLOP	KEY BOND REFUND	50.00
EFT31753	10/10/2013	CARMEL VALLEY CHOCOLATES	PAYMENT TO CONSIGNMENT SUPPLIER FOR GOODS SOLD AT THE ZIG ZAG CULTURAL CENTRE - 01/09/13 - 30/09/13	103.60
EFT31754	10/10/2013	GRAEME DONALD BRUCE	FOOTPATH DEPOSIT REFUND	1,200.00
EFT31755	10/10/2013	GILL BAXTER	PAYMENT TO CONSIGNMENT SUPPLIER FOR GOODS SOLD AT THE ZIG ZAG CULTURAL CENTRE - 01/09/13 - 30/09/13	31.50
EFT31756	10/10/2013	MARIA MULLER	PART DOG REGISTRATION REFUND	3.00
EFT31757	10/10/2013	KAYE SMITH	REFUND OF VARIOUS COSTS DUE TO CORPORATE CREDIT CARD DECLINING	984.84
EFT31758	10/10/2013	PINO & KYLIE DI RENZO	FOOTPATH DEPOSIT REFUND	1,000.00
EFT31759	10/10/2013	DOMENICA DOBKOWSKI	FOOTPATH DEPOSIT REFUND	1,000.00
EFT31760	10/10/2013	ZOFIA PALUSZAK	TRAVEL COMMUNITY VISITORS SCHEME REFUND	45.00
EFT31761	10/10/2013	HELEN NEWTON	KEY BOND REFUND	50.00
EFT31762	10/10/2013	WA LOCAL GOVERNMENT SUPERANNUATION PLAN	SUPERANNUATION CONTRIBUTIONS	82,285.58
EFT31763	10/10/2013	SHIRE OF KALAMUNDA STAFF SOCIAL CLUB	PAYROLL DEDUCTIONS	260.00
EFT31764	10/10/2013	CHILD SUPPORT AGENCY	PAYROLL DEDUCTIONS	815.81
EFT31765	10/10/2013	AUSTRALIA POST	POSTAL EXPENSES / COUNTER BILLPAY TRANSACTION FEES	5,466.79
EFT31766	10/10/2013	COVS PARTS PTY LTD	PLANT / VEHICLE PARTS	1,601.02
EFT31767	10/10/2013	LANDGATE	LAND ENQUIRY	419.19
EFT31768	10/10/2013	WA LOCAL GOVERNMENT ASSOC	WALGA VARIOUS ANNUAL SUBSCRIPTIONS 1ST JULY 2013 TO 30 JUNE 2014	43,648.44
EFT31769	10/10/2013	MCLEODS BARRISTERS & SOLICITORS	LEGAL EXPENSES	6,290.28
EFT31770	10/10/2013	MIDWASTE - TRANSPACIFIC CLEANAWAY PTY LTD	WASTE / RECYCLING SERVICES	1,122.53

**Shire of Kalamunda
 Creditors Payments 2 October to 23 October 2013**

Chq/EFT	Date	Name	Description	Amount \$
EFT31771	10/10/2013	LANDGATE - VALUATIONS	VALUATIONS FOR VARIOUS LOCATIONS	2,100.01
EFT31772	10/10/2013	WALKERS HARDWARE (MITRE 10)	HARDWARE SUPPLIES	237.84
EFT31773	10/10/2013	EASTERN METROPOLITAN REGIONAL COUNCIL	DOMESTIC / WASTE CHARGES - RED HILL TIP	65,831.19
EFT31774	10/10/2013	FASTA COURIERS	COURIER FEES	278.04
EFT31775	10/10/2013	THE WATERSHED WATER SYSTEMS	RETICULATION PARTS FOR VARIOUS RESERVES	232.56
EFT31776	10/10/2013	SANDGROPER SEPTICS	PUMPOUT SEPTIC TANKS AT VARIOUS LOCATIONS	149.69
EFT31777	10/10/2013	LINDLEY CONTRACTING	PLUMBING REPAIRS / MAINTENANCE FOR VARIOUS LOCATIONS	3,910.50
EFT31778	10/10/2013	KALA BOB KATS PTY LTD	PLANT EQUIPMENT AND OPERATOR HIRE FOR VARIOUS LOCATIONS	1,746.69
EFT31779	10/10/2013	GRIMES CONTRACTING PTY LTD	CONTRACTOR BUILDING MAINTENANCE FOR VARIOUS BUILDINGS	6,567.52
EFT31780	10/10/2013	HILL TOP TROPHIES (MILPRO WA)	SUPPLY OF NAME BADGES	34.65
EFT31781	10/10/2013	FOODWORKS FRESH FORRESTFIELD	GROCERY SUPPLIES	1,067.96
EFT31782	10/10/2013	AUSTRALASIAN PERFORMING RIGHTS ASSOCIATION	LICENCE FEE FOR THE USE OF COPYRIGHT MUSIC	1,346.61
EFT31783	10/10/2013	LESMURDIE SENIOR HIGH SCHOOL	HALL & KEY BOND REFUND	350.00
EFT31784	10/10/2013	LO-GO APPOINTMENTS	HIRE OF TEMPORARY STAFF FOR DEPOT / ADMIN	6,221.20
EFT31785	10/10/2013	STAFFLINK INDUSTRIAL	HIRE OF TEMPORARY STAFF FOR DEPOT / ADMIN	4,087.52
EFT31786	10/10/2013	FLEXI STAFF PTY.LTD.	HIRE OF TEMPORARY STAFF FOR DEPOT / ADMIN	3,736.31
EFT31787	10/10/2013	LOVEGROVE TURF SERVICES	TURF MAINTENANCE / SERVICES AT VARIOUS LOCATIONS	36,630.00
EFT31788	10/10/2013	KALAMUNDA & DISTRICTS HISTORICAL SOCIETY	PAYMENT TO CONSIGNMENT SUPPLIER FOR GOODS SOLD AT THE ZIG ZAG CULTURAL CENTRE - 01/09/13 - 30/09/13	241.50
EFT31789	10/10/2013	CRABBS KALAMUNDA (IGA)	GROCERY SUPPLIES	767.38
EFT31790	10/10/2013	VENTURA HOMES PTY LTD	FOOTPATH DEPOSIT REFUND	2,000.00

**Shire of Kalamunda
 Creditors Payments 2 October to 23 October 2013**

Chq/EFT	Date	Name	Description	Amount \$
EFT31791	10/10/2013	KALAMUNDA DISTRICT PIPE BAND	ENTERTAINMENT - WALK THE ZIG ZAG 2013	400.00
EFT31792	10/10/2013	CONTENT LIVING PTY LTD	FOOTPATH DEPOSIT REFUNDS	2,200.00
EFT31793	10/10/2013	DALE ALCOCK HOMES PTY LTD	FOOTPATH DEPOSIT REFUND	1,000.00
EFT31794	10/10/2013	HOME GROUP WA PTY LTD	FOOTPATH DEPOSIT REFUND	1,000.00
EFT31795	10/10/2013	ASHMY PTY LTD	FOOTPATH DEPOSIT REFUND	1,000.00
EFT31796	10/10/2013	GEM CAMERA CLUB INC	BOND REFUND FOR THE USE OF THE SEMINAR ROOM AT THE ZIG ZAG CULTURAL CENTRE	200.00
EFT31797	10/10/2013	HIGH WYCOMBE CRICKET CLUB	KIDSPORT FUNDING FOR VARIOUS PLAYERS AND CARPET CLEANING OF THE CLUB ROOM	1,075.00
EFT31798	10/10/2013	SWAN MARQUEES AND PARTY HIRE	EQUIPMENT HIRE FOR QUIT TARGA WEST RALLY	3,391.10
EFT31799	10/10/2013	HAWLEY'S BOBCAT SERVICE	PLANT EQUIPMENT AND OPERATOR HIRE FOR VARIOUS LOCATIONS	7,187.40
EFT31800	10/10/2013	DICK SMITH ELECTRONICS	ELECTRICAL SUPPLIES	313.96
EFT31801	10/10/2013	JOE BOLTON - SUITCASE CIRCUS	ENTERTAINMENT - WALK THE ZIG ZAG 2013	1,690.00
EFT31802	10/10/2013	C Y BOBCATS	PLANT EQUIPMENT AND OPERATOR HIRE FOR VARIOUS LOCATIONS	550.00
EFT31803	10/10/2013	HILL TOP GROUP PTY	CONTRACTOR BUILDING MAINTENANCE FOR VARIOUS BUILDINGS	13,234.68
EFT31804	10/10/2013	FORRESTFIELD LITTLE ATHLETICS CLUB	KIDSPORT FUNDING FOR VARIOUS PLAYERS	975.00
EFT31805	10/10/2013	NEW GENERATION HOMES - TANGENT NOMINEES PTY LTD	FOOTPATH DEPOSIT REFUNDS	2,000.00
EFT31806	10/10/2013	FREEDOM POOLS	FOOTPATH DEPOSIT REFUND	1,000.00
EFT31807	10/10/2013	TRILOGY SERVICING PTY LTD	AIRCONDITIONING MAINTENANCE / REPAIRS FOR VARIOUS LOCATIONS	3,258.13
EFT31808	10/10/2013	PM CONSTRUCTIONS (WA) PTY LTD	FOOTPATH DEPOSIT REFUND	1,000.00
EFT31809	10/10/2013	WEST AUSTRALIAN NEWSPAPERS HOLDINGS LTD	WALK THE ZIG ZAG 2013 ADVERTISING	148.00

**Shire of Kalamunda
 Creditors Payments 2 October to 23 October 2013**

Chq/EFT	Date	Name	Description	Amount \$
EFT31810	10/10/2013	MCDOWALL AFFLECK PTY LTD	AMENDMENTS TO THE ENGINEERING DESIGN FOR THE DEPOT MUSTER ROOM RELOCATION	605.00
EFT31811	10/10/2013	KANYANA WILDLIFE REHABILITATION CENTRE INC	PAYMENT TO CONSIGNMENT SUPPLIER FOR GOODS SOLD AT THE ZIG ZAG CULTURAL CENTRE - 01/09/13 - 30/09/13	99.20
EFT31812	10/10/2013	ZIG ZAG COMMUNITY ARTS INC	ENTERTAINMENT - BLACK CHOOK CHUTNEY - WALK THE ZIG ZAG 2013	400.00
EFT31813	10/10/2013	BIG W (AR W1.C3.U.07)	LIBRARY SUPPLIES FOR FORRESTFIELD LIBRARY	472.76
EFT31814	10/10/2013	AUSTIN COMPUTERS	SUPPLY OF COMPUTERS / ACCESSORIES	4,794.00
EFT31815	10/10/2013	SABRINA PAMMENTER	KEY BOND REFUND	50.00
EFT31816	10/10/2013	FOOD TECHNOLOGY SERVICES PTY LTD	HIRE OF TEMPORARY STAFF FOR HEALTH DEPARTMENT	2,295.98
EFT31817	10/10/2013	BENJAMIN MOORE	FOOTPATH DEPOSIT REFUND	1,000.00
EFT31818	10/10/2013	HILLS GOURMET	CATERING SUPPLIES	314.13
EFT31819	10/10/2013	HOG HILL BOYS - JOHN BIGGERSTAFF	ENTERTAINMENT - WALK THE ZIG ZAG 2013	500.00
EFT31820	10/10/2013	SPECIALISED SECURITY SHREDDING	SECURE DOCUMENT DISPOSAL BIN REMOVAL AND REPLACEMENT	55.00
EFT31821	10/10/2013	GEMMILL HOMES	FOOTPATH DEPOSIT REFUND	750.00
EFT31822	10/10/2013	HERITAGE COLLEGE PERTH INC	HALL AND KEY BOND REFUND	350.00
EFT31823	10/10/2013	SHANE BRADLEY	FOOTPATH DEPOSIT REFUND	1,000.00
EFT31824	10/10/2013	BLUEPRINT HOMES	FOOTPATH DEPOSIT REFUND	1,000.00
EFT31825	10/10/2013	WOOLWORTHS LIMITED	GROCERIES - SCHOOL HOLIDAYS KIDS COOKING CLUB PROGRAM	166.30
EFT31826	10/10/2013	AFFORDABLE LIVING HOMES	FOOTPATH DEPOSIT REFUND	1,000.00
EFT31827	10/10/2013	FORRESTFIELD TENNIS CLUB (INC)	FORRESTFIELD TENNIS CLUB HIRE FEES - 1/9/13 - 30/9/13	35.00
EFT31828	10/10/2013	EASTERN REGION SECURITY	SECURITY SERVICES TO VARIOUS SHIRE BUILDINGS	5,036.21

**Shire of Kalamunda
 Creditors Payments 2 October to 23 October 2013**

Chq/EFT	Date	Name	Description	Amount \$
EFT31829	10/10/2013	G.D.CHARLTON	PODIATRY SERVICES AT JACK HEALEY CENTRE	1,180.45
EFT31830	10/10/2013	SECURE TRAFFIC	TRAFFIC MANAGEMENT FOR VARIOUS LOCATIONS	4,083.75
EFT31831	10/10/2013	TA & VL JOHNSTON	HALL BOND REFUND FOR THE USE OF THE GALLERY AT THE ZIG ZAG CULTURAL CENTRE	500.00
EFT31832	10/10/2013	NATALIE WARBURTON - ANATOMY DESIGNS	PAYMENT TO CONSIGNMENT SUPPLIER FOR GOODS SOLD AT THE ZIG ZAG CULTURAL CENTRE - 01/09/13 - 30/09/13	2.80
EFT31833	10/10/2013	JENNIFER SCOFFERN	VOLUNTEER TRAVEL REIMBURSEMENT	30.00
EFT31834	10/10/2013	PHONE A THRONE	PORTABLE TOILETS HIRE - WALK THE ZIG ZAG 2013	2,001.00
EFT31835	10/10/2013	CALAMUNDA CAMELS PTY LTD	CAMELS - WALK THE ZIG ZAG 2013	1,650.00
EFT31836	10/10/2013	AUSTRALIAN SUPERANNUATION	SUPERANNUATION CONTRIBUTIONS	1,215.16
EFT31837	10/10/2013	SZILVIA PAL	KEY BOND REFUND	50.00
EFT31838	10/10/2013	MARY & NOEL HOFFMAN	PAYMENT TO CONSIGNMENT SUPPLIER FOR GOODS SOLD AT THE ZIG ZAG CULTURAL CENTRE - 01/09/13 - 30/09/13	41.98
EFT31839	10/10/2013	REDINK HOMES PTY LTD	FOOTPATH DEPOSIT REFUND	1,000.00
EFT31840	10/10/2013	SHIRLEY SPENCER	PAYMENT TO CONSIGNMENT SUPPLIER FOR GOODS SOLD AT THE ZIG ZAG CULTURAL CENTRE - 01/09/13 - 30/09/13	77.00
EFT31841	10/10/2013	ROSE SMART	MAINTAIN ROSE BEDS AT VARIOUS LOCATIONS	1,791.48
EFT31842	10/10/2013	TOWNLEY'S PLUMBING & GAS SERVICE	PLUMBING SERVICES FOR DEPOT	495.00
EFT31843	10/10/2013	PETER TUCATS SUPERANNUATION FUND	SUPERANNUATION CONTRIBUTIONS	250.70
EFT31844	10/10/2013	BINDALE SUPERANNUATION FUND	SUPERANNUATION CONTRIBUTIONS	70.69
EFT31845	10/10/2013	NEVERFAIL SPRINGWATER LTD (PETER ANDERTON CEN)	BOTTLED WATER SUPPLIES / MAINTENANCE	42.50
EFT31846	10/10/2013	FUN AIRBRUSH TATTOOS	ACTIVITY - WALK THE ZIG ZAG 2013	550.00
EFT31847	10/10/2013	BEVERLEY DUFF	TRAVEL COMMUNITY VISITORS SCHEME REFUND	45.00

**Shire of Kalamunda
 Creditors Payments 2 October to 23 October 2013**

Chq/EFT	Date	Name	Description	Amount \$
EFT31848	10/10/2013	NEVERFAIL SPRINGWATER LTD (ZZCC)	BOTTLED WATER SUPPLIES / MAINTENANCE	26.25
EFT31849	10/10/2013	MARRA & ASSOCIATES	STRUCTURAL ENGINEERING SERVICES FOR THE AMENDMENTS TO THE ZZCC WALKWAY AS REQUIRED IN ADDITION TO THE ORIGINAL PROPOSAL.	412.50
EFT31850	10/10/2013	LIBERTY OIL WESTERN AUSTRALIA PTY LTD	SUPPLY OF FUEL	37,989.49
EFT31851	10/10/2013	PH CONCRETE (WA) PTY LTD	FOOTPATH MAINTENANCE / REPAIRS FOR VARIOUS LOCATIONS	20,009.75
EFT31852	10/10/2013	IDEAL HOMES PTY LTD	FOOTPATH DEPOSIT REFUNDS	1,700.00
EFT31853	10/10/2013	GUNDRY'S CARPET CHOICE	SUPPLY AND INSTALLATION OF CARPET AT DEPOT	820.00
EFT31854	10/10/2013	VANESSA ROBINSON	REIMBURSEMENT OF GOODS PURCHASED FOR WALK THE ZIG ZAG	249.90
EFT31855	10/10/2013	BENCHMARK MAINTENANCE SERVICES	CONTRACTOR BUILDING MAINTENANCE VARIOUS BUILDINGS	1,325.50
EFT31856	10/10/2013	FONZ'S BOBCAT & TRUCK HIRE	PLANT EQUIPMENT AND OPERATOR HIRE FOR VARIOUS LOCATIONS	5,672.78
EFT31857	10/10/2013	NANCY GILLESPIE	PAYMENT TO CONSIGNMENT SUPPLIER FOR GOODS SOLD AT THE ZIG ZAG CULTURAL CENTRE - 01/09/13 - 30/09/13	21.00
EFT31858	10/10/2013	BEAVER TREE SERVICES	TREE REMOVAL / PRUNING FOR VARIOUS LOCATIONS	33,303.60
EFT31859	10/10/2013	PAUL & NADINE MANSFIELD	FOOTPATH DEPOSIT REFUND	700.00
EFT31860	10/10/2013	VISION SUPER PTY LTD	SUPERANNUATION CONTRIBUTIONS	756.74
EFT31861	10/10/2013	WEST-SURE GROUP	CASH IN TRANSIT SERVICES - SEPT 2013	2,211.00
EFT31862	10/10/2013	PATRICIA MOSS	PAYMENT TO CONSIGNMENT SUPPLIER FOR GOODS SOLD AT THE ZIG ZAG CULTURAL CENTRE - 01/09/13 - 30/09/13	37.80
EFT31863	10/10/2013	RYLAN PTY LTD	SUPPLY OF CONCRETE KERBING AT VARIOUS LOCATIONS	5,830.00

**Shire of Kalamunda
 Creditors Payments 2 October to 23 October 2013**

Chq/EFT	Date	Name	Description	Amount \$
EFT31864	10/10/2013	KALEIDOSCOPE CRAFT KITS	DRY CLEANING / WASHING SERVICES FOR HARTFIELD PARK RECREATION CENTRE	60.00
EFT31865	10/10/2013	STARDATA PTY LTD	STARDATA MAINTENANCE AGREEMENT	175.04
EFT31866	10/10/2013	JENNIFER DE YOUNG	VOLUNTEER TRANSPORT REIMBURSEMENT REFUND	423.50
EFT31867	10/10/2013	ANGELA CANCI	PODIATRY SERVICES AT JACK HEALEY SERVICES	321.53
EFT31868	10/10/2013	SUPALUX PAINT CO PTY LTD	PAINTING MAINTENANCE SERVICES AT VARIOUS LOCATIONS	8,627.30
EFT31869	10/10/2013	RWR DEVELOPMENTS PTY LTD (IN LIQUIDATION)	FOOTPATH DEPOSIT REFUND	1,104.50
EFT31870	10/10/2013	UNIQUE WASTE MANAGEMENT SERVICES	HIRE OF TRUCK AND OPERATOR TO TRANSPORT HOOK LIFT BINS FROM WALLISTON TRANSFER STATION TO VARIOUS REFUSE RECYCLING SITES	6,831.00
EFT31871	10/10/2013	CLAIRE O'NEILL - CLAIRE'S EMBROIDERY	PAYMENT TO CONSIGNMENT SUPPLIER FOR GOODS SOLD AT THE ZIG ZAG CULTURAL CENTRE - 01/09/13 - 30/09/13	152.60
EFT31872	10/10/2013	LINDA STONES	PAYMENT TO CONSIGNMENT SUPPLIER FOR GOODS SOLD AT THE ZIG ZAG CULTURAL CENTRE - 01/09/13 - 30/09/13	20.30
EFT31873	10/10/2013	IAN MOSS	PAYMENT TO CONSIGNMENT SUPPLIER FOR GOODS SOLD AT THE ZIG ZAG CULTURAL CENTRE - 01/09/13 - 30/09/13	66.50
EFT31874	10/10/2013	AROUNDABOUT GARDENING SERVICES	VERGE / GARDEN MAINTENANCE FOR VARIOUS LOCATIONS	6,759.50
EFT31875	10/10/2013	LEWIS FAMILY TRUST	PLUMBING SERVICES TO VARIOUS LOCATIONS	165.00
EFT31876	10/10/2013	PETER TURNER REALTY	PRIVATE WORKS REFUND - RETURN OF DRAINAGE BOND - WAPC 12812 -	9,800.00
EFT31877	10/10/2013	PETER FALCONER	PAYMENT TO CONSIGNMENT SUPPLIER FOR GOODS SOLD AT THE ZIG ZAG CULTURAL CENTRE - 01/09/13 -	29.40

**Shire of Kalamunda
 Creditors Payments 2 October to 23 October 2013**

Chq/EFT	Date	Name	Description	Amount \$
			30/09/13	
EFT31878	10/10/2013	CITY OF STIRLING	MEALS ON WHEELS PROGRAM - AUGUST 2013	5,012.78
EFT31879	10/10/2013	ROBERT CINANNI	FENCING REBATE	2,000.00
EFT31880	10/10/2013	MARY FORWARD	PAYMENT TO CONSIGNMENT SUPPLIER FOR GOODS SOLD AT THE ZIG ZAG CULTURAL CENTRE - 01/09/13 - 30/09/13	15.10
EFT31881	10/10/2013	FOXTEL	MONTHLY SUBSCRIPTION	200.00
EFT31882	10/10/2013	CORRECT LINE CONTRACTING PTY LTD	BALANCE OF RETENTION DUE FROM CANNING ROAD SEWER EXTENSION	75.88
EFT31883	10/10/2013	HANDS-ON INFECTION CONTROL	SUPPLY OF HEPATITIS B POST VACCINATION SEROLOGY FOR TWO STAFF MEMBERS	59.40
EFT31884	10/10/2013	HANS SCHWALB	PAYMENT TO CONSIGNMENT SUPPLIER FOR GOODS SOLD AT THE ZIG ZAG CULTURAL CENTRE - 01/09/13 - 30/09/13	24.47
EFT31885	10/10/2013	THE ARTFUL FLOWE - FELICIA LOWE	PAYMENT TO CONSIGNMENT SUPPLIER FOR GOODS SOLD AT THE ZIG ZAG CULTURAL CENTRE - 01/09/13 - 30/09/13	75.95
EFT31886	10/10/2013	MAHBUB ALAM SHEIKH	FENCING REBATE	1,836.00
EFT31887	10/10/2013	MPJ (WA) PTY LTD	SUPERANNUATION CONTRIBUTIONS	442.52
EFT31888	10/10/2013	MAX OGRADY - PROJECT PHOTOGRAPHY	PAYMENT TO CONSIGNMENT SUPPLIER FOR GOODS SOLD AT THE ZIG ZAG CULTURAL CENTRE - 01/09/13 - 30/09/13	21.00
EFT31889	10/10/2013	LOUISA ILES	GROUP FITNESS INSTRUCTOR	272.58
EFT31890	10/10/2013	SAINTE FRANCIS OF ASSISI CATHOLIC CHURCH MAIDA VALE PARISH	HALL AND KEY BOND REFUND	550.00

**Shire of Kalamunda
 Creditors Payments 2 October to 23 October 2013**

Chq/EFT	Date	Name	Description	Amount \$
EFT31891	10/10/2013	DMC CLEANING	CLEANING OF VARIOUS SHIRE BUILDINGS	50,344.83
EFT31892	10/10/2013	NICHOLAS TAYLOR	PAYMENT TO CONSIGNMENT SUPPLIER FOR GOODS SOLD AT THE ZIG ZAG CULTURAL CENTRE - 01/09/13 - 30/09/13	31.50
EFT31893	10/10/2013	SILK ON SILK (ROSEMARY LONSDALE)	PAYMENT TO CONSIGNMENT SUPPLIER FOR GOODS SOLD AT THE ZIG ZAG CULTURAL CENTRE - 01/09/13 - 30/09/13	133.00
EFT31894	10/10/2013	BODYSCENTS	BODY PRODUCTS FOR RESALE IN THE VISITOR CENTRE GIFT SHOP	805.30
EFT31895	10/10/2013	KALAMUNDA RANGERS INCORPORATED	KIDSPORT FUNDING FOR VARIOUS PLAYERS	645.00
EFT31896	10/10/2013	CUROST MILK SUPPLY	MILK SUPPLY FOR ADMINISTRATION BUILDING & DEPOT	234.20
EFT31897	10/10/2013	LA SALLE JUNIOR FOOTBALL CLUB	KIDSPORT FUNDING FOR VARIOUS PLAYERS	200.00
EFT31898	10/10/2013	MAVIS PASKULICH	PAYMENT TO CONSIGNMENT SUPPLIER FOR GOODS SOLD AT THE ZIG ZAG CULTURAL CENTRE - 01/09/13 - 30/09/13	84.00
EFT31899	10/10/2013	LEE HUNG LING & MEE SIENG TONG	CROSSOVER CONTRIBUTION	385.00
EFT31900	10/10/2013	BEESWAX CREATIONS	PAYMENT TO CONSIGNMENT SUPPLIER FOR GOODS SOLD AT THE ZIG ZAG CULTURAL CENTRE - 01/09/13 - 30/09/13	5.26
EFT31901	10/10/2013	TIERRA ECOLOGIA	PAYMENT TO CONSIGNMENT SUPPLIER FOR GOODS SOLD AT THE ZIG ZAG CULTURAL CENTRE - 01/09/13 - 30/09/13	165.90
EFT31902	10/10/2013	MPK TREE SERVICES	TREE REMOVAL / BRANCH PRUNING AT VARIOUS LOCATIONS	34,087.63
EFT31903	10/10/2013	A1 TROJAN PEST CONTROL	PEST CONTROL SERVICES FOR VARIOUS LOCATIONS	1,657.00
EFT31904	10/10/2013	WINNIE FONG	CROSSOVER CONTRIBUTION	385.00

**Shire of Kalamunda
 Creditors Payments 2 October to 23 October 2013**

Chq/EFT	Date	Name	Description	Amount \$
EFT31905	10/10/2013	VISSYART	PAYMENT TO CONSIGNMENT SUPPLIER FOR GOODS SOLD AT THE ZIG ZAG CULTURAL CENTRE - 01/09/13 - 30/09/13	21.70
EFT31906	10/10/2013	TALIS CONSULTANTS	CONSULTING SERVICES	1,925.00
EFT31907	10/10/2013	OFF PEN PUBLISHING - BETH BAKER	PAYMENT TO CONSIGNMENT SUPPLIER FOR GOODS SOLD AT THE ZIG ZAG CULTURAL CENTRE - 01/09/13 - 30/09/13	63.00
EFT31908	10/10/2013	STAN THE TYRE MAN (STAN'S TYRE SERVICE WA)	PLANT / VEHICLE PARTS	143.00
EFT31909	10/10/2013	WOBBLYJULES INVESTMENTS FUND	SUPERANNUATION CONTRIBUTIONS	203.69
EFT31910	10/10/2013	GRAHAM STIMSON	PAYMENT TO CONSIGNMENT SUPPLIER FOR GOODS SOLD AT THE ZIG ZAG CULTURAL CENTRE - 01/09/13 - 30/09/13	89.60
EFT31911	10/10/2013	BALLIGART - HELEN LOCK	PAYMENT TO CONSIGNMENT SUPPLIER FOR GOODS SOLD AT THE ZIG ZAG CULTURAL CENTRE - 01/09/13 - 30/09/13	31.15
EFT31912	10/10/2013	FLEETCARE PTY LTD	STAFF CONTRIBUTIONS TO NOVATED LEASING	1,446.04
EFT31913	10/10/2013	PROFESSIONAL SEARCH GROUP PTY LTD	LABOUR / TEMP HIRE	3,170.48
EFT31914	10/10/2013	IMAGININGS LIFE IMAGES BY SUE	PAYMENT TO CONSIGNMENT SUPPLIER FOR GOODS SOLD AT THE ZIG ZAG CULTURAL CENTRE - 01/09/13 - 30/09/13	18.90
EFT31915	10/10/2013	AUSTRALIAN CATHOLIC SUPERANNUATION & RETIREMENT FUND (ACSRF)	SUPERANNUATION CONTRIBUTIONS	234.60
EFT31916	10/10/2013	TECHLAY	SUPPLY AND INSTALL PRE-MIX STONE SET SURFACE	13,178.00
EFT31917	10/10/2013	COMISKEYS CONTRACTING PTY LTD	FOOTPATH DEPOSIT REFUND	1,200.00
EFT31918	10/10/2013	KENWICK TEEBALL & BASEBALL CLUB	KIDSPORT FUNDING FOR VARIOUS PLAYERS	200.00
EFT31919	10/10/2013	GISHWARA SHAMITHA BANDARA	CROSSOVER CONTRIBUTION	192.50
EFT31920	10/10/2013	MOMENTUM WEALTH	RATES REFUND	330.10

**Shire of Kalamunda
 Creditors Payments 2 October to 23 October 2013**

Chq/EFT	Date	Name	Description	Amount \$
EFT31921	10/10/2013	JOHN COLES NURSERY	SUPPLY OF SHRUBS FOR GARDEN BEDS AT KALAMUNDA TOWN MALL	1,565.00
EFT31922	10/10/2013	P DUCKMANTON & B PALMER	CROSSOVER CONTRIBUTION	385.00
EFT31923	10/10/2013	VICTORIA PARK BELMONT BASEBALL CLUB	KIDSPORT FUNDING FOR VARIOUS PLAYERS	150.00
EFT31924	10/10/2013	PETER WEBB	PAYMENT TO CONSIGNMENT SUPPLIER FOR GOODS SOLD AT THE ZIG ZAG CULTURAL CENTRE - 01/09/13 - 30/09/13	10.47
EFT31925	10/10/2013	CRYSTALINA JEWELLERY	PAYMENT TO CONSIGNMENT SUPPLIER FOR GOODS SOLD AT THE ZIG ZAG CULTURAL CENTRE - 01/09/13 - 30/09/13	43.40
EFT31926	10/10/2013	BIJOUX ART ARTISANAT GALERIE	PAYMENT TO CONSIGNMENT SUPPLIER FOR GOODS SOLD AT THE ZIG ZAG CULTURAL CENTRE - 01/09/13 - 30/09/13	21.00
EFT31927	10/10/2013	PETER FORREST	ZZCC SEMINAR ROOM HIRE FEE PART REFUND	40.00
EFT31928	10/10/2013	DEAN ENGLISH	HALL AND KEY BOND REFUND	750.00
EFT31929	10/10/2013	ROSINA HARPER	KEY BOND REFUND	50.00
EFT31930	10/10/2013	BUNBURY YOUNG VOICES	KEY BOND REFUND	50.00
EFT31931	24/10/2013	HART SPORT	GYM EQUIPMENT SUPPLIES	1,230.00
EFT31932	24/10/2013	SPOTLIGHT STORES PTY LTD.	ART AND CRAFT SUPPLIES FOR PETER ANDERTON CENTRE	65.35
EFT31933	24/10/2013	STYLECORP CORPORATE WEAR	SUPPLY OF UNIFORM FOR VARIOUS STAFF MEMBERS	1,709.93
EFT31934	24/10/2013	CONSERVATION VOLUNTEERS AUSTRALIA	WEED REMOVAL AT POISON GULLY	825.00
EFT31935	24/10/2013	HARVEY NORMAN COMPUTERS MIDLAND	ELECTRICAL SUPPLIES	49.00
EFT31936	24/10/2013	MOTORCHARGE - WRIGHT EXPRESS FUEL CARDS AUSTRALIA LTD	FUEL - PERIOD ENDING 15 OCTOBER 2013	6,141.80
EFT31937	24/10/2013	CCS STRATEGIC MANAGEMENT	FINAL PAYMENT - CONSULTATION SERVICES FOR THE DARLING RANGE MASTER PLAN REPORT	4,808.65

**Shire of Kalamunda
 Creditors Payments 2 October to 23 October 2013**

Chq/EFT	Date	Name	Description	Amount \$
EFT31938	24/10/2013	NIGHTINGALES PHARMACY	FIRST AID AS SELECTED FOR THE WORKS DEPOT	306.70
EFT31939	24/10/2013	SHAWSETT TRAINING PTY LTD	REGISTRATION FOR 10 STAFF TO ATTEND FIRST AID TRAINING WITH WORK BOOK	940.00
EFT31940	24/10/2013	SALMAT MEDIAFORCE PTY LTD	DISTRIBUTION OF FLYERS FOR EVENTS WITHIN THE SHIRE	1,161.51
EFT31941	24/10/2013	VISION IDZ	OFFICE EQUIPMENT / SUPPLIES	834.90
EFT31942	24/10/2013	YMCA OF PERTH INC	MANAGEMENT FEES - JUL 2013 - SEP 2013 - KALAMUNDA WATER PARK	54,891.10
EFT31943	24/10/2013	NEVERFAIL SPRINGWATER LTD (KALA LIB)	BOTTLED WATER SUPPLIES / MAINTENANCE	43.75
EFT31944	24/10/2013	WILSONS SIGN SOLUTIONS	SUPPLY OF WOODEN NAME PLAQUE FOR STAFF MEMBER	88.00
EFT31945	24/10/2013	THE EDUCATIONAL EXPERIENCE	LIBRARY / OFFICE SUPPLIES	93.79
EFT31946	24/10/2013	IMAGE EMBROIDERY	SUPPLY OF UNIFORM FOR VARIOUS STAFF MEMBERS	735.90
EFT31947	24/10/2013	FIRE AND SAFETY WA	FIRE PROTECTION WEAR / SUPPLIES	2,910.27
EFT31948	24/10/2013	PFD FOOD SERVICES	KIOSK SUPPLIES FOR HARTFIELD PARK	129.05
EFT31949	24/10/2013	FITNESS AUSTRALIA LTD	ONE YEAR REGISTRATION FEE FOR HARTFIELD PARK AND HIGH WYCOMBE RECREATION CENTRES	1,430.00
EFT31950	24/10/2013	COUNTRYWIDE PUBLICATIONS	MONTHLY ADVERT FOR ZZCC FOR YOUR GUIDE TO PERTH AND FREMANTLE""	500.00
EFT31951	24/10/2013	PAUL'S BUS COMPANY PTY LTD	BUSH SHUTTLE SERVICE - WALK THE ZIG ZAG 2013	5,050.00
EFT31952	24/10/2013	CABCHARGE AUSTRALIA LIMITED	CABCHARGE FEES	110.55
EFT31953	24/10/2013	COLLECTOR OF PUBLIC MONIES (CENTRELINK)	CENTREPAY - TRANSACTION CHARGES FOR AUGUST 2013	74.58
EFT31954	24/10/2013	BRUMBY'S KALAMUNDA	CATERING SUPPLIES	39.20
EFT31955	24/10/2013	GREENLINE AG PTY LTD	PLANT / VEHICLE PARTS	628.07
EFT31956	24/10/2013	REBBECA J ROBINSON	GRAPHIC DESIGN - WALK THE ZIG ZAG 2013	1,500.00
EFT31957	24/10/2013	PICTON PRESS	PRINTING OF BROCHURES FOR VARIOUS EVENTS	976.59

**Shire of Kalamunda
 Creditors Payments 2 October to 23 October 2013**

Chq/EFT	Date	Name	Description	Amount \$
EFT31958	24/10/2013	VE GRAPHICS PTY LTD	PRINTING POSTERS - WALK THE ZIG ZAG 2013	789.25
EFT31959	24/10/2013	ALL EARTH GROUP	DISPOSAL OF ROAD SWEEPINGS FROM LAWNBROOK AND DAWSON ROAD TIP SITES	3,814.40
EFT31960	24/10/2013	GRAB THE MIC	JAM SESSION & KARAOKE ACTIVITY - WALK THE ZIG ZAG 2013	975.00
EFT31961	24/10/2013	VIP CARPET AND UPHOLSTERY CLEANING SERVICE	CARPET CLEANING AT VARIOUS LOCATIONS	229.00
EFT31962	24/10/2013	BIDVEST FOODSERVICE	GROCERIES FOR PETER ANDERTON CENTRE	1,620.19
EFT31963	24/10/2013	TOTALLY WORKWEAR MIDLAND	SUPPLY OF PROTECTIVE CLOTHING	91.71
EFT31964	24/10/2013	ALLION LEGAL	GENERAL EMPLOYMENT SERVICES	12,635.30
EFT31965	24/10/2013	MARIA PERKINS	TRAVEL COMMUNITY VISITORS SCHEME REFUND	30.00
EFT31966	24/10/2013	ALLAN MORTON	COUNCILLOR ALLOWANCE	2,456.72
EFT31967	24/10/2013	KALAMUNDA PLASTERERS PTY LTD	FOOTPATH DEPOSIT REFUND	750.00
EFT31968	24/10/2013	BEVERLEY HENDERSON	FOOTPATH DEPOSIT REFUND	1,000.00
EFT31969	24/10/2013	WA LOCAL GOVERNMENT SUPERANNUATION PLAN	SUPERANNUATION CONTRIBUTIONS	83,947.38
EFT31970	24/10/2013	SHIRE OF KALAMUNDA STAFF SOCIAL CLUB	PAYROLL DEDUCTIONS	508.00
EFT31971	24/10/2013	CHILD SUPPORT AGENCY	PAYROLL DEDUCTIONS	815.81
EFT31972	24/10/2013	BUNNINGS BUILDING SUPPLIES	HARDWARE SUPPLIES FOR VARIOUS LOCATIONS	487.83
EFT31973	24/10/2013	CLEANAWAY (7004295)	DOMESTIC AND RECYCLING RUBBISH COLLECTION FEES	236,106.54
EFT31974	24/10/2013	COVS PARTS PTY LTD	PLANT / VEHICLE PARTS	290.78
EFT31975	24/10/2013	GULLY VIEWS NEWSAGENCY	SUBSCRIPTIONS & NEWSPAPERS FOR VARIOUS LOCATIONS	109.30
EFT31976	24/10/2013	KALAMUNDA AUTO ELECTRICS	PLANT / VEHICLE PARTS	1,072.95
EFT31977	24/10/2013	MCLEODS BARRISTERS & SOLICITORS	LEGAL EXPENSES	2,318.96
EFT31978	24/10/2013	SESCO SECURITY CO	SECURITY MONITORING SERVICES FOR VARIOUS LOCATIONS	3,272.50

**Shire of Kalamunda
 Creditors Payments 2 October to 23 October 2013**

Chq/EFT	Date	Name	Description	Amount \$
EFT31979	24/10/2013	STATE LIBRARY OF W.A.	LOST AND DAMAGED BOOKS FOR VARIOUS LIBRARIES	425.70
EFT31980	24/10/2013	LANDGATE - VALUATIONS	VALUATIONS FOR VARIOUS LOCATIONS	1,298.82
EFT31981	24/10/2013	WA LIBRARY SUPPLIES PTY LTD	LIBRARY / OFFICE SUPPLIES	1,099.47
EFT31982	24/10/2013	WALKERS HARDWARE (MITRE 10)	HARDWARE SUPPLIES	659.21
EFT31983	24/10/2013	ECHO NEWSPAPER	ADVERTISING FOR VARIOUS JOBS / EVENTS	2,600.00
EFT31984	24/10/2013	MCKAY EARTHMOVING PTY LTD	PLANT EQUIPMENT AND OPERATOR HIRE FOR VARIOUS LOCATIONS	6,037.66
EFT31985	24/10/2013	KALAMUNDA FENCING & GATE MAKERS	FENCING SUPPLIES / REPAIRS	18,234.70
EFT31986	24/10/2013	EASTERN METROPOLITAN REGIONAL COUNCIL	DOMESTIC / WASTE CHARGES - RED HILL TIP. MATTRESS DISPOSAL FEES. ANNUAL CONTRIBUTION TO CATERING, REFRESHMENTS & CHARGES RELATING TO LGA ZONE MEETINGS	142,133.11
EFT31987	24/10/2013	BORAL CONSTRUCTION MATERIALS GROUP	ROAD MATERIALS FOR VARIOUS LOCATIONS	2,820.80
EFT31988	24/10/2013	A & S HILL	ELECTRICAL REPAIRS / MAINTENANCE FOR VARIOUS LOCATIONS	24,795.82
EFT31989	24/10/2013	ZIPFORM PTY LTD	INSTALMENT AND FINAL NOTICE PRINTING FOR 2013/2014	11,062.31
EFT31990	24/10/2013	DOMUS NURSERY	GARDEN SUPPLIES FOR VARIOUS LOCATIONS	218.90
EFT31991	24/10/2013	OFFICE LINE	OFFICE FURNITURE SUPPLIES	1,788.60
EFT31992	24/10/2013	JASON SIGNMAKERS	SIGNAGE SUPPLIES	480.34
EFT31993	24/10/2013	3 VODAFONE HUTCHISON AUSTRALIA PTY LTD	COMMUNICATION EXPENSES	1,892.95
EFT31994	24/10/2013	FASTA COURIERS	COURIER FEES	359.62
EFT31995	24/10/2013	THE WATERSHED WATER SYSTEMS	RETICULATION PARTS FOR VARIOUS RESERVES	974.25
EFT31996	24/10/2013	RAECO	STATIONERY / OFFICE SUPPLIES	23.90
EFT31997	24/10/2013	MCINTOSH & SON	PLANT / VEHICLE PARTS	1,699.77
EFT31998	24/10/2013	KINETIC HEALTH GROUP LTD	PREPLACEMENT MEDICALS / BASELINE HEARING TESTS	577.50

**Shire of Kalamunda
 Creditors Payments 2 October to 23 October 2013**

Chq/EFT	Date	Name	Description	Amount \$
EFT31999	24/10/2013	SANDGROPER SEPTICS	PUMPOUT SEPTIC TANKS AT VARIOUS LOCATIONS	218.90
EFT32000	24/10/2013	MAJOR MOTORS PTY LTD	PLANT / VEHICLE PARTS	1,392.84
EFT32001	24/10/2013	CANON AUSTRALIA PTY LTD	PHOTOCOPYING CHARGES	12.49
EFT32002	24/10/2013	ALSCO LINEN SERVICE	LINEN HIRE / LAUNDRY SERVICES	1,500.23
EFT32003	24/10/2013	KALA BOB KATS PTY LTD	PLANT EQUIPMENT AND OPERATOR HIRE FOR VARIOUS LOCATIONS	2,537.70
EFT32004	24/10/2013	STEWART & HEATON CLOTHING CO PTY LTD	FIRE PROTECTION WEAR / SUPPLIES	1,907.38
EFT32005	24/10/2013	STONETRADERS PTY LTD	GARDEN / RESERVE SUPPLIES	2,319.00
EFT32006	24/10/2013	GRONBEK SECURITY	SECURITY KEY SERVICES TO VARIOUS SHIRE BUILDINGS	1,062.25
EFT32007	24/10/2013	GRIMES CONTRACTING PTY LTD	CONTRACTOR BUILDING MAINTENANCE FOR VARIOUS BUILDINGS	1,737.07
EFT32008	24/10/2013	CONCUT PTY LTD.	PLANT EQUIPMENT HIRE	1,419.00
EFT32009	24/10/2013	KENYON & COMPANY PTY LTD	PLANT / VEHICLE PARTS	1,824.90
EFT32010	24/10/2013	BGC ASPHALT	ROAD MATERIALS FOR VARIOUS LOCATIONS	389.13
EFT32011	24/10/2013	DORMA AUTOMATICS PTY LTD	DOOR MAINTENANCE TO VARIOUS SHIRE BUILDINGS	198.00
EFT32012	24/10/2013	WA LIMESTONE COMPANY	ROAD MATERIALS FOR VARIOUS LOCATIONS	1,819.58
EFT32013	24/10/2013	WESTSIDE FIRE SERVICES	TESTING AND INSPECTION OF FIRE EQUIPMENT / SUPPLIES	501.60
EFT32014	24/10/2013	STAPLES AUSTRALIA PTY LTD(CORPORATE EXPRESS AUSTRALIA LTD)	STATIONERY / OFFICE SUPPLIES	2,114.15
EFT32015	24/10/2013	HILL TOP TROPHIES (MILPRO WA)	SUPPLY OF NAME BADGES	21.45
EFT32016	24/10/2013	BRICK CONCEPTS	CROSSOVER MAINTENANCE / REPAIRS FOR VARIOUS LOCATIONS	1,100.00
EFT32017	24/10/2013	FULTON HOGAN INDUSTRIES PTY LTD	ROAD MATERIALS FOR VARIOUS LOCATIONS	2,213.16
EFT32018	24/10/2013	JOHN GIARDINA	COUNCILLOR ALLOWANCE	3,899.03
EFT32019	24/10/2013	GEOFF STALLARD	COUNCILLOR ALLOWANCE	2,456.72

**Shire of Kalamunda
 Creditors Payments 2 October to 23 October 2013**

Chq/EFT	Date	Name	Description	Amount \$
EFT32020	24/10/2013	FOODWORKS FRESH FORRESTFIELD	GROCERY SUPPLIES	1,578.10
EFT32021	24/10/2013	WA LOCAL GOVERNMENT ASSOCIATION (ADVERTISING)	ADVERTISING FOR VARIOUS JOBS / EVENTS	11,856.67
EFT32022	24/10/2013	IT VISION	REGISTRATION FOR STAFF TO ATTEND - RATES AND PROPERTY ESSENTIALS	2,282.50
EFT32023	24/10/2013	MACDONALD JOHNSTON ENGINEERING	PLANT / VEHICLE PARTS	1,490.52
EFT32024	24/10/2013	LO-GO APPOINTMENTS	HIRE OF TEMPORARY STAFF FOR DEPOT / ADMIN	8,197.29
EFT32025	24/10/2013	STAFFLINK INDUSTRIAL	HIRE OF TEMPORARY STAFF FOR DEPOT / ADMIN	2,861.25
EFT32026	24/10/2013	BRIDGESTONE AUSTRALIA LTD	PLANT / VEHICLE PARTS	1,448.26
EFT32027	24/10/2013	WORK CLOBBER (MIDLAND)	PROTECTIVE CLOTHING SUPPLIES	940.06
EFT32028	24/10/2013	FLEXI STAFF PTY.LTD.	HIRE OF TEMPORARY STAFF FOR DEPOT / ADMIN	3,787.06
EFT32029	24/10/2013	GREEN SKILLS (ECOJOBS)	LABOUR ASSISTANCE FOR TREE PLANTING	3,931.13
EFT32030	24/10/2013	ZIG ZAG GRAPHICS AND PRINT	GRAPHIC DESIGN AND PRINTING OF STATIONERY	69.00
EFT32031	24/10/2013	ONESTEEL DISTRIBUTION (MIDALIA STEEL)	PLANT / VEHICLE PARTS	89.93
EFT32032	24/10/2013	J BLACKWOOD & SON LIMITED	PROTECTIVE WEAR / SUPPLIES	4,301.86
EFT32033	24/10/2013	EASTERN HILLS SAWS AND MOWERS	PLANT / VEHICLE PARTS	102.50
EFT32034	24/10/2013	AIR LIQUIDE WA PTY LTD	GAS BOTTLE FACILITY FEE	129.47
EFT32035	24/10/2013	LOVEGROVE TURF SERVICES	TURF MAINTENANCE / SERVICES AT VARIOUS LOCATIONS	58,223.00
EFT32036	24/10/2013	REPCO BRAKE & CLUTCH	PLANT / VEHICLE PARTS	316.80
EFT32037	24/10/2013	SEBASTIAN BUTCHERS	CATERING SUPPLIES	551.70
EFT32038	24/10/2013	CRABBS KALAMUNDA (IGA)	GROCERY SUPPLIES	1,544.00
EFT32039	24/10/2013	VENTURA HOMES PTY LTD	FOOTPATH DEPOSIT REFUND	1,000.00
EFT32040	24/10/2013	EDUCATIONAL ART SUPPLIES COMPANY	CRAFT SUPPLIES FOR LIBRARIES	74.21
EFT32041	24/10/2013	HOME GROUP WA PTY LTD	FOOTPATH DEPOSIT REFUNDS	2,000.00
EFT32042	24/10/2013	GEM CAMERA CLUB INC	HALL BOND REFUND	500.00

**Shire of Kalamunda
 Creditors Payments 2 October to 23 October 2013**

Chq/EFT	Date	Name	Description	Amount \$
EFT32043	24/10/2013	GCS SERVICES	PLUMBING SERVICES TO VARIOUS SHIRE BUILDINGS	354.53
EFT32044	24/10/2013	MARTIN'S TRAILER PARTS	PLANT / VEHICLE PARTS	499.09
EFT32045	24/10/2013	ST JOHN AMBULANCE AUSTRALIA (WA) INC	FIRST AID POST - WALK THE ZIG ZAG 2013	499.80
EFT32046	24/10/2013	SHIRE OF MUNDARING	REIMBURSEMENT TO THE SHIRE OF MUNDARING FOR ADVERTISING IN THE EXPERIENCE PERTH ANNUAL HOLIDAY PLANNER	1,450.00
EFT32047	24/10/2013	FINISHING TOUCH	BUS CLEANING / DETAILING	180.00
EFT32048	24/10/2013	SWAN MARQUEES AND PARTY HIRE	MARQUEES & EQUIPMENT HIRE - WALK THE ZIG ZAG 2013	9,839.60
EFT32049	24/10/2013	TERRY ILICH CIVIL ENGINEERING	FOOTPATH DEPOSIT REFUND	1,200.00
EFT32050	24/10/2013	THE CHURCHES COMMISSION ON EDUCATION (INC)	GRANT TOWARDS CHAPLAINCY IN THE HILLS AND FOOTHILLS REGION	22,550.00
EFT32051	24/10/2013	MIDWAY FORD (WA)	SUPPLY OF NEW VEHICLE	26,233.00
EFT32052	24/10/2013	HAWLEY'S BOBCAT SERVICE	PLANT EQUIPMENT AND OPERATOR HIRE FOR VARIOUS LOCATIONS	6,083.00
EFT32053	24/10/2013	VICKI LEE JOHNSTON	ARTWORK SOLD - FRAMING NATURE EXHIBITION	749.00
EFT32054	24/10/2013	DEPARTMENT OF FIRE AND EMERGENCY SERVICES (DFES)	2013/2014 EMERGENCY SERVICES LEVY	35,320.10
EFT32055	24/10/2013	J CORP PTY LTD	FOOTPATH DEPOSIT REFUND	1,000.00
EFT32056	24/10/2013	DICK SMITH ELECTRONICS	ELECTRICAL SUPPLIES	356.88
EFT32057	24/10/2013	IAN JUSTIN WHITTEN	COUNCILLOR ALLOWANCE	2,456.72
EFT32058	24/10/2013	THE FARM SHOP (WA) PTY LTD	GARDEN / RESERVE SUPPLIES	248.93
EFT32059	24/10/2013	B & J CATALANO PTY LTD	ROAD MATERIALS FOR VARIOUS LOCATIONS	8,936.65
EFT32060	24/10/2013	HILL TOP GROUP PTY	CONTRACTOR BUILDING MAINTENANCE FOR VARIOUS BUILDINGS	9,167.24
EFT32061	24/10/2013	UHY HAINES NORTON	AUDIT CERTIFICATION FOR HACC	2,860.00

Shire of Kalamunda
Creditors Payments 2 October to 23 October 2013

Chq/EFT	Date	Name	Description	Amount \$
EFT32062	24/10/2013	NEW GENERATION HOMES - TANGENT NOMINEES PTY LTD	FOOTPATH DEPOSIT REFUND	1,000.00
EFT32063	24/10/2013	FREEDOM POOLS	FOOTPATH DEPOSIT REFUND	1,000.00
EFT32064	24/10/2013	ALL TYPE ENGRAVING & SIGNS	SIGNAGE SUPPLIES	139.70
EFT32065	24/10/2013	LIONS CLUB OF LESMURDIE (INC)	STAFF CATERING FOR WALK THE ZIG ZAG 2013	45.00
EFT32066	24/10/2013	IRRIGATION AUSTRALIA LTD	IRRIGATION MAINTENANCE	402.50
EFT32067	24/10/2013	POLYTECHNIC WEST	CERTIFICATE III IN HORTICULTURE - COURSE FEES	1,283.51
EFT32068	24/10/2013	GYMCARE	GYM EQUIPMENT REPAIRS / MAINTENANCE	133.65
EFT32069	24/10/2013	QUICK CORPORATE AUST PTY LTD	STATIONERY & OFFICE SUPPLIES	2,506.60
EFT32070	24/10/2013	PM CONSTRUCTIONS (WA) PTY LTD	FOOTPATH DEPOSIT REFUND	1,000.00
EFT32071	24/10/2013	WEST AUSTRALIAN NEWSPAPERS HOLDINGS LTD	ADVERTISING - FRAMING NATURE ADVERT	148.00
EFT32072	24/10/2013	MCDOWALL AFFLECK PTY LTD	CONSULTING SERVICES - CAT POUND AND TRANSPORTABLE AT DEPOT	1,650.00
EFT32073	24/10/2013	COMMUNITY NEWSPAPER GROUP LTD	ADVERTISING FOR VARIOUS JOBS AND EVENTS	3,060.91
EFT32074	24/10/2013	IAP2 AUSTRALASIA (INTERNATIONAL ASSOCIATION FOR PUBLIC PARTICIPATION A	REGISTRATION FOR STAFF TO ATTEND - TECHNIQUES OF EFFECTIVE PUBLIC PARTICIPATION	2,200.00
EFT32075	24/10/2013	ZIG ZAG COMMUNITY ARTS INC	CONTRIBUTION TO THE ZIG ZAG FESTIVAL 2013	30,950.00
EFT32076	24/10/2013	PERRY ENVIRONMENTAL CONTRACTING	WEED CONTROL AT VARIOUS LOCATIONS	4,510.00
EFT32077	24/10/2013	BIG W (AR W1.C3.U.07)	LIBRARY SUPPLIES	262.94
EFT32078	24/10/2013	CRAIG SMITH	HALL BOND REFUND	50.00
EFT32079	24/10/2013	PRIME CORPORATE PSYCHOLOGY SERVICES P/L	EMPLOYEE ASSISTANCE PROGRAMME	554.13
EFT32080	24/10/2013	BT EQUIPMENT P/L T/A TUTT BRYANT EQUIPMENT	PLANT/VEHICLE PARTS	646.38
EFT32081	24/10/2013	MAIN ROADS (WA)	GRANT PAYMENT - REFUND REQUEST FOR PROJECT 21106307 - ABERNETHY ROAD - PROJECT COMPLETED UNDER BUDGET	32,507.20
EFT32082	24/10/2013	DUN & BRADSTREET (AUSTRALIA) PTY LTD	DEBT COLLECTION FEES FOR RATES	465.83

**Shire of Kalamunda
 Creditors Payments 2 October to 23 October 2013**

Chq/EFT	Date	Name	Description	Amount \$
EFT32083	24/10/2013	SAI GLOBAL LTD	SUPPLY OF AUSTRALIAN STANDARDS	67.60
EFT32084	24/10/2013	LOCK, STOCK & FARRELL LOCKSMITH PTY LTD	PADLOCKS / KEYS SUPPLIES	1,376.00
EFT32085	24/10/2013	BAS'S & BALANCES	KEY BOND REFUND	50.00
EFT32086	24/10/2013	SPORTS SURFACES	HIRE PRESSURE CLEANING SERVICES FOR LESMURDIE TENNIS COURTS	5,142.50
EFT32087	24/10/2013	OPUS INTERNATIONAL CONSULTANTS (PCA) LIMITED	PROFESSIONAL SERVICES - PROVIDE NOTIFICATIONS AND FINAL WATER CORPORATION APPROVALS TO ALLOW THE PROGRESS OF THE ABERNETHY ROAD SEWER PROJECT	4,937.90
EFT32088	24/10/2013	PERTH ENGINEERING & MAINTENANCE (WA) P/L (HIVE RESOURCE RECOVERY P/L)	GREEN WASTE REMOVAL / WASTE RECYCLING CHARGES	62,094.32
EFT32089	24/10/2013	THE DAIMLER & LANCHESTER OWNERS CLUB OF WA	HALL AND KEY BOND REFUND	350.00
EFT32090	24/10/2013	COCA-COLA AMATIL (AUST) PTY LTD	KIOSK SUPPLIES FOR HARTFIELD RECREATION CENTRE	1,474.95
EFT32091	24/10/2013	CONFECT - EXPRESS	KIOSK SUPPLIES FOR HARTFIELD RECREATION CENTRE	632.81
EFT32092	24/10/2013	G FORCE PRINTING	SUPPLY OF PRINTED STATIONERY STOCK	1,121.34
EFT32093	24/10/2013	T-QUIP	PLANT / VEHICLE PARTS	700.42
EFT32094	24/10/2013	HYDROQUIP PUMPS	MAINTENANCE OF PUMPING INSTALLATIONS	7,320.50
EFT32095	24/10/2013	DIRECT TRADES SUPPLY PTY LTD	HARDWARE SUPPLIES	935.58
EFT32096	24/10/2013	SNAKES HARMFUL & HARMLESS	REGISTRATION FOR STAFF TO ATTEND SNAKE AWARENESS / MANAGEMENT COURSE	2,497.00
EFT32097	24/10/2013	GEMMILL HOMES	BUILDING APPLICATION FEE REFUND	536.68
EFT32098	24/10/2013	CEDAR HOMES	FOOTPATH DEPOSIT REFUND	1,000.00
EFT32099	24/10/2013	GREENWAY ENTERPRISES	GARDEN / RESERVE SUPPLIES	1,051.36
EFT32100	24/10/2013	MARGARET THOMAS	COUNCILLOR ALLOWANCE	2,456.72
EFT32101	24/10/2013	WESTRAC PTY LTD	PLANT / VEHICLE PARTS	319.55
EFT32102	24/10/2013	NINA ROSE	FACE PAINTING - WALK THE ZIG ZAG 2013	1,500.00

Shire of Kalamunda
Creditors Payments 2 October to 23 October 2013

Chq/EFT	Date	Name	Description	Amount \$
EFT32103	24/10/2013	MAYDAY EARTHMOVING	PLANT AND EQUIPMENT HIRE	2,715.61
EFT32104	24/10/2013	BGC CEMENT BAGGED PRODUCTS	ROAD MATERIALS SUPPLIES	845.33
EFT32105	24/10/2013	INSIGHT CCS PTY LTD	AFTER HOURS ANSWERING SERVICES	2,404.29
EFT32106	24/10/2013	BLUEPRINT HOMES	FOOTPATH DEPOSIT REFUND	1,200.00
EFT32107	24/10/2013	NOREEN TOWNSEND	COUNCILLOR ALLOWANCE	2,456.72
EFT32108	24/10/2013	MODERN TEACHING AIDS	CHILDREN ACTIVITY SUPPLIES	507.43
EFT32109	24/10/2013	ELECTRICITY NETWORKS CORP T/A WESTERN POWER	DESIGN FEE AND INSTALLATION OF STREET LIGHTING AT 32 PALM TCE FORRESTFIELD	1,602.00
EFT32110	24/10/2013	SHANE & MELISSA STERRETT	FOOTPATH DEPOSIT REFUND	1,000.00
EFT32111	24/10/2013	AFFORDABLE LIVING HOMES	FOOTPATH DEPOSIT REFUND	950.00
EFT32112	24/10/2013	SNAP PRINTING - MIDLAND	PRINTING OF BUSINESS CARDS FOR VARIOUS STAFF	1,125.00
EFT32113	24/10/2013	FRANK LINDSEY	COUNCILLOR ALLOWANCE	2,456.72
EFT32114	24/10/2013	WATTLE GROVE PLANT FARM	GARDEN / VERGE SUPPLIES	552.20
EFT32115	24/10/2013	ERIN ASHBOLT	REFUND OF PLANNING APPLICATION FEES	222.00
EFT32116	24/10/2013	MAIDA VALE DELIVERY ROUND	PAPER AND MAGAZINES DELIVERIES FOR HIGH WYCOMBE LIBRARY	73.85
EFT32117	24/10/2013	G.D.CHARLTON	PODIATRY SERVICES AT JACK HEALEY CENTRE	1,753.82
EFT32118	24/10/2013	JOMAR CONTRACTING	FENCING INSTALLATION / REPAIRS	4,815.80
EFT32119	24/10/2013	SECURE TRAFFIC	TRAFFIC MANAGEMENT FOR VARIOUS LOCATIONS	2,387.00
EFT32120	24/10/2013	MEREDITH HIGGINS	ENTERTAINMENT - WALK THE ZIG ZAG 2013	330.00
EFT32121	24/10/2013	JACKSON MCDONALD LAWYERS	LEGAL EXPENSES	13,891.69
EFT32122	24/10/2013	EASIFLEET MANAGEMENT	STAFF CONTRIBUTIONS TO NOVATED LEASES	9,719.02
EFT32123	24/10/2013	HUMES	DRAINAGE SUPPLIES FOR VARIOUS LOCATIONS	5,269.22
EFT32124	24/10/2013	BOYA EQUIPMENT PTY LTD	PLANT / VEHICLE PARTS	1,261.29

**Shire of Kalamunda
 Creditors Payments 2 October to 23 October 2013**

Chq/EFT	Date	Name	Description	Amount \$
EFT32125	24/10/2013	MIDLAND SURVEY SERVICES (T/AS FRESHWATER BAY INVESTMENTS P/L)	PROFESSIONAL SURVEY SERVICES IN AUGUST 2013 - ROAD PICK UP FOR FORRESTFIELD-HIGH WYCOMBE INDUSTRIAL AREA	23,199.00
EFT32126	24/10/2013	DEBORAH CORK	TRAVEL COMMUNITY VISITORS SCHEME REFUND	52.50
EFT32127	24/10/2013	AUSTRALIAN SUPERANNUATION	SUPERANNUATION CONTRIBUTIONS	2,072.42
EFT32128	24/10/2013	BULLIVANTS PTY LTD	PLANT / VEHICLE PARTS	407.00
EFT32129	24/10/2013	WAYPOINT BUSINESS PARK	FOOTPATH DEPOSIT REFUND	700.00
EFT32130	24/10/2013	ROAD SIGNS AUSTRALIA (ALLPACK SIGNS)	TRAFFIC PROTECTION PRODUCTS / SIGNAGE	1,629.10
EFT32131	24/10/2013	PIRTEK WELSHPOOL	PLANT / VEHICLE PARTS	330.15
EFT32132	24/10/2013	DENNIS & IRENE THORBURN	FOOTPATH DEPOSIT REFUND	1,000.00
EFT32133	24/10/2013	WILLIAM GREENSHIELDS	CROSSOVER CONTRIBUTION	192.50
EFT32134	24/10/2013	MULTILEC ENGINEERING	QUARTERLY SERVICING & TESTING OF LIFTS	218.90
EFT32135	24/10/2013	HOLCIM AUSTRALIA PTY LTD	ROAD MATERIALS FOR VARIOUS LOCATIONS	1,080.92
EFT32136	24/10/2013	PETER TUCATS SUPERANNUATION FUND	SUPERANNUATION CONTRIBUTIONS	250.70
EFT32137	24/10/2013	DRAINFLOW SERVICES PTY LTD	CLEANING / MAINTAINING STORM WATER DRAINS	27,817.90
EFT32138	24/10/2013	BINDALE SUPERANNUATION FUND	SUPERANNUATION CONTRIBUTIONS	72.63
EFT32139	24/10/2013	DARREN JONES	REFUND OF EMPLOYMENT CONTRACT ALLOWANCE	96.25
EFT32140	24/10/2013	NEVERFAIL SPRINGWATER LTD (ZZCC)	BOTTLED WATER SUPPLIES / MAINTENANCE	13.95
EFT32141	24/10/2013	MARRA & ASSOCIATES	ENGINEERING SITE INSPECTIONS - NORM SADLER VIEWING PLATFORM PROJECT - ACACIA RD MAIDA VALE	385.00
EFT32142	24/10/2013	OXFAM AUSTRALIA	KEY BOND REFUND	50.00
EFT32143	24/10/2013	VERA MURRAY	TRAVEL COMMUNITY VISITORS SCHEME REFUND	45.00
EFT32144	24/10/2013	PH CONCRETE (WA) PTY LTD	FOOTPATH MAINTENANCE / REPAIRS FOR VARIOUS LOCATIONS	7,725.33
EFT32145	24/10/2013	IDEAL HOMES PTY LTD	FOOTPATH DEPOSIT REFUNDS	2,200.00

**Shire of Kalamunda
 Creditors Payments 2 October to 23 October 2013**

Chq/EFT	Date	Name	Description	Amount \$
EFT32146	24/10/2013	BRAD ROSS HOMES	FOOTPATH DEPOSIT REFUND	1,000.00
EFT32147	24/10/2013	BENCHMARK MAINTENANCE SERVICES	CONTRACTOR BUILDING MAINTENANCE VARIOUS BUILDINGS	753.50
EFT32148	24/10/2013	FONZ'S BOBCAT & TRUCK HIRE	PLANT EQUIPMENT AND OPERATOR HIRE FOR VARIOUS LOCATIONS	7,181.97
EFT32149	24/10/2013	BEAVER TREE SERVICES	TREE REMOVAL / PRUNING FOR VARIOUS LOCATIONS	39,264.50
EFT32150	24/10/2013	VISION SUPER PTY LTD	SUPERANNUATION CONTRIBUTIONS	756.74
EFT32151	24/10/2013	POCKETPHONE COMMUNICATIONS	PLANT / VEHICLE PARTS	2,440.00
EFT32152	24/10/2013	KENNARDS TRAFFIC MANAGEMENT WA	EQUIPMENT HIRE - WALK THE ZIG ZAG 2013	1,240.00
EFT32153	24/10/2013	ALISHA JANE HEGARTY	HALL AND KEY BOND REFUND	350.00
EFT32154	24/10/2013	FIRE 4 HIRE	VERGE / RESERVE MAINTENANCE AT VARIOUS LOCATIONS	6,653.00
EFT32155	24/10/2013	FUJI XEROX AUSTRALIA PTY LTD	PHOTOCOPYING CHARGES	5,975.80
EFT32156	24/10/2013	MCLERNONS EVERYTHING BUSINESS	STORAGE SHELVING FOR STORE ROOM AT THE DEPOT	981.00
EFT32157	24/10/2013	STARDATA PTY LTD	STARDATA MAINTENANCE AGREEMENT	2,492.18
EFT32158	24/10/2013	AARON J STIRK	TECHNICIAN SERVICES FOR VARIOUS EVENTS	1,122.00
EFT32159	24/10/2013	LINDSAY GOODWIN	TECHNICIAN SERVICES FOR VARIOUS EVENTS	884.00
EFT32160	24/10/2013	ANGELA CANCI	PODIATRY SERVICES AT JACK HEALEY SERVICES	779.10
EFT32161	24/10/2013	SUPALUX PAINT CO PTY LTD	PAINTING MAINTENANCE SERVICES AT VARIOUS LOCATIONS	17,892.60
EFT32162	24/10/2013	CHOICE ENVIRONMENTAL SERVICES	WEED CONTROL SUPPLIES	319.00
EFT32163	24/10/2013	BENGINEERING TRANSPORT EQUIPMENT P/L	PLANT / VEHICLE PARTS	880.00
EFT32164	24/10/2013	UNIQUE WASTE MANAGEMENT SERVICES	HIRE OF TRUCK AND OPERATOR TO TRANSPORT HOOK LIFT BINS FROM WALLISTON TRANSFER STATION TO VARIOUS REFUSE RECYCLING SITES	9,413.25
EFT32165	24/10/2013	GUNS KAMBO'S (KAMBO'S MIDLAND)	ELECTRICAL SUPPLIES	315.00

**Shire of Kalamunda
 Creditors Payments 2 October to 23 October 2013**

Chq/EFT	Date	Name	Description	Amount \$
EFT32166	24/10/2013	EAE HOLDINGS P/L T/A STANLEE WA	CATERING / KITCHEN SUPPLIES	68.53
EFT32167	24/10/2013	PERTH HILLS JAZZ ORCHESTRA INC. (PHJO)	PERFORMANCE - WALK THE ZIG ZAG 2013	1,000.00
EFT32168	24/10/2013	STRATEGEN ENVIRONMENTAL CONSULTANTS	WATER MONITORING AT WILKINS ROAD	3,601.13
EFT32169	24/10/2013	AROUNDABOUT GARDENING SERVICES	VERGE / GARDEN MAINTENANCE FOR VARIOUS LOCATIONS	1,584.00
EFT32170	24/10/2013	IBES AUSTRALIA	REPAIRS TO CHAIR AT WOODLUPINE PODIATRY	181.50
EFT32171	24/10/2013	ROBERT EMERY	COUNCILLOR ALLOWANCE	2,456.72
EFT32172	24/10/2013	EYEZON PTY LTD (WHAT'S ON)	MONTHLY ADVERT FOR PERTH HILLS "SPREAD"	984.00
EFT32173	24/10/2013	INSTRULABS PTY LTD	PLANT / VEHICLE PARTS	920.10
EFT32174	24/10/2013	PATIO PERFECT	REFUND OF BUILDING SERVICE LEVY	40.50
EFT32175	24/10/2013	DELMA WHITE	ARTWORK SOLD - FRAMING NATURE EXHIBITION	1,036.00
EFT32176	24/10/2013	AMCOR RECYCLING	WASTE CARDBOARD RECYCLING CHARGES	202.40
EFT32177	24/10/2013	KRISHNAMURTHY PALANISAMY	HALL AND KEY BOND REFUND	355.00
EFT32178	24/10/2013	DYMOCKS MIDLAND GATE	LIBRARY SUPPLIES	703.87
EFT32179	24/10/2013	SAFE T CARD AUSTRALIA PTY LTD	MONTHLY MONITORING CHARGES FOR VARIOUS LOCATIONS	338.26
EFT32180	24/10/2013	TOURISM COUNCIL WA	REGISTRATIONS FOR STAFF ATTENDANCE AT WA TOURISM AWARDS	2,000.00
EFT32181	24/10/2013	DAIMLER TRUCKS PERTH	PLANT / VEHICLE PARTS	208.54
EFT32182	24/10/2013	CATHOLIC SUPER	SUPERANNUATION CONTRIBUTIONS	65.03
EFT32183	24/10/2013	INSPIRED BY NATURE	REMAINING FUNDS PROVISION FOR KALAMUNDA COMMUNITY GARDEN	3,000.00
EFT32184	24/10/2013	SVETLANA ELLIOTT	HALL AND KEY BOND REFUND	350.00
EFT32185	24/10/2013	THE TWO CENT PROFESSIONALS	PERFORMANCE FOR OCTOBER MORNING MUSIC AT KALAMUNDA PERFORMING ARTS CENTRE	400.00

**Shire of Kalamunda
 Creditors Payments 2 October to 23 October 2013**

Chq/EFT	Date	Name	Description	Amount \$
EFT32186	24/10/2013	ROBERTS LANDSCAPES AND PAVING	LANDSCAPING FOR KALAMUNDA COMMUNITY GARDEN: LIMESTONE GARDEN BED	860.00
EFT32187	24/10/2013	CATHERINE DANIELS	REIMBURSEMENT OF LIQUOR LICENCE FEE FOR THE BOOK CLUB " OCT 31 2013"	50.00
EFT32188	24/10/2013	MANDURAH PACKAGING	KITCHEN PRODUCTS, CLEANING GOODS AND CONSUMABLES	319.65
EFT32189	24/10/2013	MPJ (WA) PTY LTD	SUPERANNUATION CONTRIBUTIONS	442.52
EFT32190	24/10/2013	TODD BEVAN	KEY BOND REFUND	50.00
EFT32191	24/10/2013	WARWICK CARTER	REFUND OF EMPLOYMENT CONTRACT ALLOWANCE	60.00
EFT32192	24/10/2013	TOTAL GREEN RECYCLING	E- WASTE RECYCLING CHARGES	908.42
EFT32193	24/10/2013	ALEXANDER BONG NG HENG ZU	CROSSOVER CONTRIBUTION	385.00
EFT32194	24/10/2013	S & J DEVELOPMENTS P/L T/AS LANSDOWN CONSTRUCTION	PART PAYMENT FOR THE CONSTRUCTION OF THE NORM SADLER VIEWING PLATFORM	50,511.78
EFT32195	24/10/2013	CUROST MILK SUPPLY	MILK SUPPLY FOR ADMINISTRATION BUILDING & DEPOT	199.17
EFT32196	24/10/2013	ELAN ENERGY MANAGEMENT	WASTE TYRE RECYCLING CHARGES	693.38
EFT32197	24/10/2013	ENVIRO PIPES PTY LTD	DRAINAGE SUPPLIES FOR VARIOUS LOCATIONS	496.10
EFT32198	24/10/2013	ALAN ROBERT GORDON MALCOLM	KEY BOND REFUND	50.00
EFT32199	24/10/2013	RTK NETWEST	RTKNETWEST VRS NETWORK SUBSCRIPTION FROM 1/11/2013 TILL 31/10/2014	4,400.00
EFT32200	24/10/2013	MPK TREE SERVICES	TREE REMOVAL / BRANCH PRUNING AT VARIOUS LOCATIONS	9,754.25
EFT32201	24/10/2013	RENUKA BAURHOO	FENCING REBATE CLAIM	1,836.00
EFT32202	24/10/2013	HOCKING HERITAGE STUDIO	CONSULTANCY FEES - STAGE 2 - MUNICIPAL INVENTORY REVIEW	11,000.00
EFT32203	24/10/2013	A1 TROJAN PEST CONTROL	PEST CONTROL SERVICES FOR VARIOUS LOCATIONS	189.00

**Shire of Kalamunda
 Creditors Payments 2 October to 23 October 2013**

Chq/EFT	Date	Name	Description	Amount \$
EFT32204	24/10/2013	IRRIGATION WA PTY LTD	IRRIGATION MAINTENANCE	264.00
EFT32205	24/10/2013	ISAAC VINCENT	ENTERTAINMENT -ST PATRICK'S DAY CELEBRATIONS - ZIG ZAG CULTURAL CENTRE, KALAMUNDA	300.00
EFT32206	24/10/2013	NEVERFAIL SPRINGWATER LTD (ADMIN OFFICE)	BOTTLED WATER SUPPLIES / MAINTENANCE	13.95
EFT32207	24/10/2013	STAN THE TYRE MAN (STAN'S TYRE SERVICE WA)	PLANT / VEHICLE PARTS	1,925.00
EFT32208	24/10/2013	ZACKS COMMERCIAL ARTISTS	SUPPLY OF UNIFORM FOR HARTFIELD PARK RECREATION CENTRE	149.80
EFT32209	24/10/2013	WOBBLYJULES INVESTMENTS FUND	SUPERANNUATION CONTRIBUTIONS	203.68
EFT32210	24/10/2013	GOLDER ASSOCIATES	GEOTECHNICAL INVESTIGATION, PRELIMINARY ACID SULFATE SOILS ASSESSMENT AND PAVEMENT DESIGN - ABERNETHY ROAD HIGH WYCOMBE	17,655.00
EFT32211	24/10/2013	AAA TREE SERVICE	FOOTPATH DEPOSIT REFUND	1,000.00
EFT32212	24/10/2013	ALISON HARVEY	ARTWORK SOLD - FRAMING NATURE EXHIBITION	175.00
EFT32213	24/10/2013	ENVIRO SWEEP	FOOTPATH SWEEPING SERVICES AT VARIOUS LOCATIONS	17,712.75
EFT32214	24/10/2013	PROFESSIONAL SEARCH GROUP PTY LTD	LABOUR / TEMP HIRE	3,546.24
EFT32215	24/10/2013	WORM AFFAIR	SUPPLY TUMBLWEED WORM CAFES SUPPLY STARTER PACKS OF WORMS	220.00
EFT32216	24/10/2013	TME TOWN PLANNING MANAGEMENT ENGINEERING	PROGRESS PAYMENT - PIONEER PARK TROTTERING TRACK FATAL FLAW ASSESSMENT	11,000.00
EFT32217	24/10/2013	GECCO	ASSORTED PEWTER KEYRINGS (+ DISPLAY STAND) FOR SALE IN VISITOR CENTRE	541.96
EFT32218	24/10/2013	PERTH WASTE PTY LTD	BULK BIN SERVICE FOR GENERAL AND GREEN WASTER DISPOSAL	65,471.43

**Shire of Kalamunda
 Creditors Payments 2 October to 23 October 2013**

Chq/EFT	Date	Name	Description	Amount \$
EFT32219	24/10/2013	AIRCON BY DESIGN	SUPPLY AND INSTAL CASSETTE STYLE AIRCONDITIONER TO REPLACE EXISTING BROKEN UNIT IN READING ROOM AT KALAMUNDA LIBRARY	6,980.00
EFT32220	24/10/2013	FIONA MARIAH	PERFORMANCE AT MORNING MUSIC & 80% TICKET SALES OF PERFORMANCE AUGUST 24, 2013	4,537.20
EFT32221	24/10/2013	APT GOLDFIELDS PTY LTD	CLEANING OF OPEN DRAIN AND HEADWALL. SUPERVISION OF WORK NEAR PARMELIA GAS PIPELINE BY APA GROUP.	752.40
EFT32222	24/10/2013	AUSTRALIAN CATHOLIC SUPERANNUATION & RETIREMENT FUND (ACSRF)	SUPERANNUATION CONTRIBUTIONS	234.60
EFT32223	24/10/2013	HOPE VALLEY NURSERY	SUPPLY OF ASSORTED POT PLANTS	1,116.50
EFT32224	24/10/2013	COLONIAL SANDSTONE PRODUCTS	SUPPLY OF PLANTER BOX FOR THE KALAMUNDA TOWN CENTRE BEAUTIFICATION PROGRAMME	9,680.00
EFT32225	24/10/2013	NEWLANS COACH BUILDERS	SUPPLY AND INSTALLATION OF VEHICLE PARTS	2,332.00
EFT32226	24/10/2013	TECHLAY	SUPPLY AND INSTALL STONE SET PAVING IN TOWN MALL RE-DEVELOPMENT	2,640.00
EFT32227	24/10/2013	WILDLIFE BOTANICA	ARTWORK SOLD - FRAMING NATURE EXHIBITION	259.28
EFT32228	24/10/2013	AESTHETIC PROJECTS PTY LTD - JOHN BEVEN	REFUND OF BUILDING SERVICES LEVY	40.50
EFT32229	24/10/2013	BURGESS RAWSON	PROFESSIONAL SERVICES - VALUATION FEES	2,200.00
EFT32230	24/10/2013	SHERWOOD FLOORING PTY LTD	REPAIRS AND MAINTENANCE TO WOODEN FLOORS AT HIGH WYCOMBE RECREATION CENTRE	15,807.00
EFT32231	24/10/2013	NICOLE PENDLEBURY	CROSSOVER CONTRIBUTION	385.00
EFT32232	24/10/2013	BOX N CRATE HIRE	BOXES AND CRATES REQUIRED AS PER QUOTATION FOR THE FORRESTFIELD LIBRARY CARPET REPLACEMENT	837.75

**Shire of Kalamunda
 Creditors Payments 2 October to 23 October 2013**

Chq/EFT	Date	Name	Description	Amount \$
EFT32233	24/10/2013	JANETTE WOODLAND	VOLUNTEER TRAVEL REIMBURSEMENT	37.50
EFT32234	24/10/2013	PETER FORREST	HALL BOND REFUND	300.00
EFT32235	24/10/2013	MATHEW COLE	CROSSOVER CONTRIBUTION	385.00
EFT32236	24/10/2013	CIRCLE FOR SPIRITUAL AID TO LIFE AUSTRALIA	KEY BOND REFUND	50.00
EFT32237	24/10/2013	ROGER CHAI	CROSSOVER CONTRIBUTION	385.00
EFT32238	24/10/2013	PRODUCTION 2	HALL AND KEY BOND REFUND	450.00
EFT32239	24/10/2013	GOURMET COASTER	STAFF CATERING WALK THE ZIG ZAG 2013	219.30
EFT32240	24/10/2013	GREG ROSS	HALL AND KEY BOND REFUND, LESS FUNDS OWED ON HALL HIRE	145.00
EFT32241	24/10/2013	BANGALEE SOCIETY FOR PUJA & CULTURE INC.	HALL AND KEY BOND REFUND	350.00
EFT32242	24/10/2013	AGED CARE TODAY	KEY BOND REFUND -	50.00
EFT32243	24/10/2013	BELINDA CAREY	PAYMENT FOR ELECTORAL OFFICER	131.70
67124	01/10/2013	SHIRE OF KALAMUNDA	GENERAL EXPENSES FOR WALK THE ZIG ZAG	330.00
67125- 67135		CANCELLED CHEQUES DUE TO PRINTER MALFUNCTION DUE TO SYSTEM UPGRADE		
67136	09/10/2013	HOSPITAL BENEFIT FUND OF WA	PAYROLL DEDUCTIONS	363.45
67137	09/10/2013	AUSTRALIAN SERVICES UNION	PAYROLL DEDUCTIONS	195.52
67138	09/10/2013	MUNICIPAL EMPLOYEES UNION	PAYROLL DEDUCTIONS	504.40
67139	09/10/2013	TELSTRA CORPORATION	TELEPHONE EXPENSES	20,842.85
67140	09/10/2013	WATER CORPORATION	WATER USE AND SERVICE CHARGE FEES	2,616.31
67141	09/10/2013	BCITF	LEVY FEE - SEPTEMBER 2013	19,442.45
67142	09/10/2013	SYNERGY	POWER CHARGES	33,621.05
67143	09/10/2013	ALINTA ENERGY	GAS CHARGES	23.25
67144	09/10/2013	DIRECTOR OF LICENSING SERVICES	NUMBER PLATES	180.00
67145	09/10/2013	BUILDING COMMISSION	BUILDING LEVY - SEPTEMBER 2013	6,741.68
67146	09/10/2013	CASH - KALAMUNDA LIBRARY	PETTY CASH REIMBURSEMENT	64.95

**Shire of Kalamunda
 Creditors Payments 2 October to 23 October 2013**

Chq/EFT	Date	Name	Description	Amount \$
67147	09/10/2013	CASH - FORRESTFIELD LIBRARY	PETTY CASH REIMBURSEMENT	147.35
67148	09/10/2013	S B & S M CARROLL	RATES REFUND	411.57
67149	09/10/2013	WESTSCHEME SUPERANNUATION	SUPERANNUATION CONTRIBUTIONS	600.42
67150	09/10/2013	REST SUPERANNUATION	SUPERANNUATION CONTRIBUTIONS	1,128.25
67151	09/10/2013	AMP RETIREMENT SAVINGS ACCOUNT	SUPERANNUATION CONTRIBUTIONS	247.72
67152	09/10/2013	COGNET NOMINEES PTY LTD ACF MAP SUPER FUND	SUPERANNUATION CONTRIBUTIONS	88.85
67153	09/10/2013	COLONIAL 1ST STATE SUPERANNUATION	SUPERANNUATION CONTRIBUTIONS	953.13
67154	09/10/2013	HESTA SUPER FUND	SUPERANNUATION CONTRIBUTIONS	710.65
67155	09/10/2013	AMPLIFE LIMITED	SUPERANNUATION CONTRIBUTIONS	108.30
67156	09/10/2013	CASH - MEALS ON WHEELS	PETTY CASH REIMBURSEMENT	565.10
67157	09/10/2013	CASH - LESMURDIE LIBRARY	PETTY CASH REIMBURSEMENT	213.83
67158	09/10/2013	CASH - KALAMUNDA HACC	PETTY CASH REIMBURSEMENT	217.55
67159	09/10/2013	ANZ SUPER ADVANTAGE	SUPERANNUATION CONTRIBUTIONS	195.76
67160	09/10/2013	AMP SUPER LEADER	SUPERANNUATION CONTRIBUTIONS	78.30
67161	09/10/2013	CASH - HIGH WYCOMBE LIBRARY	PETTY CASH REIMBURSEMENT	82.38
67162	09/10/2013	ING INTEGRA PERSONAL SUPER	SUPERANNUATION CONTRIBUTIONS	85.22
67163	09/10/2013	UNISUPER	SUPERANNUATION CONTRIBUTIONS	258.61
67164	09/10/2013	HOSTPLUS PTY LTD	SUPERANNUATION CONTRIBUTIONS	192.03
67165	09/10/2013	AUSTRALIAN RETIREMENT FUND - ARF ADMINISTRATION	SUPERANNUATION CONTRIBUTIONS	77.93
67166	09/10/2013	COMMONWEALTH SUPERSELECT	SUPERANNUATION CONTRIBUTIONS	120.87
67167	09/10/2013	ANGELA HURRELL	REFUNDING CREDIT ON HACC CLIENTS ACCOUNT	26.00
67168	09/10/2013	CASH - ZIG ZAG CULTURAL CENTRE	PETTY CASH REIMBURSEMENT	60.50
67169	09/10/2013	MACQUARIE WRAP	SUPERANNUATION CONTRIBUTIONS	529.08
67170	09/10/2013	WATER CORPORATION SUPERANNUATION PLAN	SUPERANNUATION CONTRIBUTIONS	143.20
67171	09/10/2013	TWU SUPERANNUATION FUND	SUPERANNUATION CONTRIBUTIONS	190.00

**Shire of Kalamunda
 Creditors Payments 2 October to 23 October 2013**

Chq/EFT	Date	Name	Description	Amount \$
67172	09/10/2013	WELCOME TIPOLOMA VEA	CROSSOVER CONTRIBUTION	385.00
67173	09/10/2013	TURQUOISE COAST TOURISM	SUPPLY OF BROCHURES PLUS POSTAGE FOR ZIG ZAG CULTURAL CENTRE	16.50
67174	09/10/2013	GARRY PACKARD	KEY BOND REFUND	50.00
67175	17/10/2013	SHIRE OF KALAMUNDA	CASH ON HAND FOR RECYCLING OPEN DAY FLOAT - 20 OCTOBER 2013	500.00
67176- 67192		CANCELLED CHEQUES DUE TO PRINTER MALFUNCTION DUE TO SYSTEM UPGRADE		
67193	23/10/2013	PHILIP & JANE DAVIES	RATES PRIZE	57.00
67194	23/10/2013	HOSPITAL BENEFIT FUND OF WA	PAYROLL DEDUCTIONS	363.45
67195	23/10/2013	AUSTRALIAN SERVICES UNION	PAYROLL DEDUCTIONS	195.52
67196	23/10/2013	MUNICIPAL EMPLOYEES UNION	PAYROLL DEDUCTIONS	465.60
67197	23/10/2013	TELSTRA CORPORATION	TELEPHONE EXPENSES	22.36
67198	23/10/2013	WATER CORPORATION	WATER USE AND SERVICE CHARGE FEES	2,726.38
67199	23/10/2013	SYNERGY	POWER CHARGES	125,145.90
67200	23/10/2013	ALINTA ENERGY	GAS CHARGES	869.60
67201	23/10/2013	SUSAN BILICH	COUNCILLOR ALLOWANCE	8,947.11
67202	23/10/2013	WA CONSERVATION OF RAPTORS	KIDS ENTERTAINMENT - WALK THE ZIG ZAG	200.00
67203	23/10/2013	CASH - ADMIN	PETTY CASH REIMBURSEMENT	748.10
67204	23/10/2013	SIMON DI ROSSO	COUNCILLOR ALLOWANCE	2,456.72
67205	23/10/2013	CASH - FORRESTFIELD LIBRARY	PETTY CASH REIMBURSEMENT	142.84
67206	23/10/2013	CASH - HARTFIELD PARK	PETTY CASH REIMBURSEMENT	139.30
67207	23/10/2013	WESTSCHEME SUPERANNUATION	SUPERANNUATION CONTRIBUTIONS	590.49
67208	23/10/2013	REST SUPERANNUATION	SUPERANNUATION CONTRIBUTIONS	1,138.06
67209	23/10/2013	AMP RETIREMENT SAVINGS ACCOUNT	SUPERANNUATION CONTRIBUTIONS	247.24
67210	23/10/2013	ANDREW WADDELL	COUNCILLOR ALLOWANCE	2,456.72

**Shire of Kalamunda
 Creditors Payments 2 October to 23 October 2013**

Chq/EFT	Date	Name	Description	Amount \$
67211	23/10/2013	COGNET NOMINEES PTY LTD ACF MAP SUPER FUND	SUPERANNUATION CONTRIBUTIONS	96.63
67212	23/10/2013	COLONIAL 1ST STATE SUPERANNUATION	SUPERANNUATION CONTRIBUTIONS	1,004.83
67213	23/10/2013	HESTA SUPER FUND	SUPERANNUATION CONTRIBUTIONS	738.09
67214	23/10/2013	AMPLIFE LIMITED	SUPERANNUATION CONTRIBUTIONS	83.01
67215	23/10/2013	CASH - MEALS ON WHEELS	PETTY CASH REIMBURSEMENT	540.95
67216	23/10/2013	CASH - KALAMUNDA HACC	PETTY CASH REIMBURSEMENT	925.45
67217	23/10/2013	ANZ SUPER ADVANTAGE	SUPERANNUATION CONTRIBUTIONS	195.76
67218	23/10/2013	AMP SUPER LEADER	SUPERANNUATION CONTRIBUTIONS	93.50
67219	23/10/2013	ING INTEGRA PERSONAL SUPER	SUPERANNUATION CONTRIBUTIONS	111.74
67220	23/10/2013	UNISUPER	SUPERANNUATION CONTRIBUTIONS	271.30
67221	23/10/2013	DYLAN O'CONNOR	COUNCILLOR ALLOWANCE	2,456.72
67222	23/10/2013	HOSTPLUS PTY LTD	SUPERANNUATION CONTRIBUTIONS	189.99
67223	23/10/2013	AUSTRALIAN RETIREMENT FUND - ARF ADMINISTRATION	SUPERANNUATION CONTRIBUTIONS	77.78
67224	23/10/2013	COMMONWEALTH SUPERSELECT	SUPERANNUATION CONTRIBUTIONS	174.08
67225	23/10/2013	THE GOOD GUYS	ELECTRICAL ITEMS	115.50
67226	23/10/2013	MACQUARIE WRAP	SUPERANNUATION CONTRIBUTIONS	529.08
67227	23/10/2013	WATER CORPORATION SUPERANNUATION PLAN	SUPERANNUATION CONTRIBUTIONS	143.20
67228	23/10/2013	PLUM PERSONAL PLAN	SUPERANNUATION CONTRIBUTIONS	42.02
67229	23/10/2013	TWU SUPERANNUATION FUND	SUPERANNUATION CONTRIBUTIONS	190.00
67230	23/10/2013	TUMBLEWEED SALES PTY LTD	SUPPLY OF TUMBLEWEED 150 LITRE COMPOST BIN AND AERATORS	8,140.00
				4,358,208.61

Declaration of financial / conflict of interests to be recorded prior to dealing with each item.

64. Rates Debtors Report for the Period Ended 31 October 2013

Previous Items	N/A
Responsible Officer	Director Corporate & Community Services
Service Area	Finance
File Reference	FI-DRS-004
Applicant	N/A
Owner	N/A
Attachment 1	Summary of Outstanding Rates for the period ended 31 October 2013

PURPOSE

1. To receive a report on rates debtors for the period ended 31 October 2013.

BACKGROUND

2. Attached is the report detailing rates debtors for the period ended 31 October 2013 (Attachment 1).
3. Rates notices were issued on 08 July 2013

Instalment dates are as follows:

Option 1 (Full Payment) - By 12 August 2013

Option 2 (Two Instalments) – 1st Instalment Date by 12 August 2013
2nd Instalment Date by 16 December 2013

Option 3 (Four Instalments) – 1st Instalment Date by 12 August 2013
2nd Instalment Date by 14 October 2013
3rd Instalment Date by 16 December 2013
4th Instalment Date by 10 February 2014

A grace period of two weeks was given before closing the instalment period. Any amounts outstanding on those ratepayers with an instalment option are regarded as defaulted and essentially fall off from this arrangement. The Shire can accept a direct debit payment arrangement to finalise the balance or a special payment arrangement is made in extenuating circumstances. Strict protocols are maintained so that the Shire is seen to be fair and equitable to all ratepayers. 2,500 Final notices were due for payment on 9 September 2013. Of these 1,772 have either paid in full or have taken up a direct debit arrangement, which leaves a balance of 728 who have yet to make any payment and will proceed to a letter of demand.

4. As noted on (Attachment 1), the Shire has collected \$18,209,557.34 or 66.45% of the debt from the date the rates and service charges were raised.

-
5. A small amount of interim rates of \$9,900 have been raised to October so far partially due to waiting for the First Instalment date of 12 August 2013 to pass but also due to staffing resources in this highly technical area which has now been filled. It is hoped that there will be a major catch up on outstanding schedules in the month of November which will result in a significant boost to the Shire's revenues.

DETAILS

Debt Recovery

6. All of the 56 outstanding debts that remain with Dun & Bradstreet have had Judgement entered against them; 41 of these have now substantially paid their rates. Of the remaining, 8 have gone to PSSO stage and the balance, 7 are at "General Procedure Claim" stage.

STATUTORY AND LEGAL CONSIDERATIONS

7. The Shire collects its rates debts in accordance with the *Local Government Act (1995) Division 6 – Rates and Service Charges under the requirements of subdivision 5 – Recovery of unpaid rates and service charges.*

POLICY CONSIDERATIONS

8. Nil.

COMMUNITY ENGAGEMENT REQUIREMENTS

9. Nil.

FINANCIAL CONSIDERATIONS

10. The early raising of rates in July has allowed the Shires operations to commence without delays in addition to earning additional interest income of approximately \$28,000.

STRATEGIC COMMUNITY PLAN

Strategic Planning Alignment

11. *Kalamunda Advancing: Strategic Community Plan to 2023*

OBJECTIVE 6.8 – To ensure financial sustainability through the implementation of effective financial management, systems and plans.

Strategy 6.8.4 Provide effective financial services to support the Shire's operations and to meet sustainability planning, reporting and accountability requirements.

SUSTAINABILITY

Social Implications

12. Debt collection can have implications upon those ratepayers facing hardship and the Shire must ensure equity in its debt collection processes.

Economic Implications

13. Effective collection of all outstanding debtors leads to enhanced financial sustainability for the Shire.

Environmental Implications

14. Nil.

RISK MANAGEMENT CONSIDERATIONS

15.

Risk	Consequence	Likelihood	Mitigation
The Shire is exposed to the potential risk of the ratepayer failing to make payments which it is obligated to do. This will result in the disruption of cash flows and increased collection costs.	High	Low	Monitor rates accounts outstanding and take appropriate means to efficiently collect the amounts due; Provide ratepayers direct debit option to pay outstanding collectable amount; Proceed to legal for those accounts where all other avenues have been exhausted.

OFFICER COMMENT

16. Nil.

Voting Requirements: Simple Majority

OFFICER RECOMMENDATION (C&C 64/2013)

That Council:

1. Receives the rates debtors report for the period ended 31 October 2013 (Attachment 1).

Moved:

Seconded:

Vote:

Attachment 1

**SHIRE OF KALAMUNDA
 SUMMARY OF OUTSTANDING RATES
 FOR THE PERIOD ENDED October 2013**

	3rd Previous Year + Outstanding	2nd Previous Year Outstanding	Previous Year Outstanding	Current Outstanding	Total Outstanding	Previous Year Total Outstanding
31/07/2013	\$315,936	\$94,910	\$295,163	\$22,754,586	\$23,460,595	\$779,089
31/08/2013	\$313,756	\$91,341	\$223,784	\$14,084,885	\$14,713,766	\$22,398,443
30/09/2013	\$310,039	\$87,180	\$183,695	\$12,571,976	\$13,152,890	\$13,496,792
30/10/2013	\$309,076	\$83,444	\$165,097	\$10,113,059	\$10,670,676	\$12,802,377
30/11/2013						
31/12/2013						
31/01/2014						
28/02/2014						
31/03/2014						
30/04/2014						
31/05/2014						
30/06/2014						
	\$1,248,807	\$356,874	\$867,740	\$59,524,506	\$10,670,676	

Rate Levied 2013/2014

Interim 2013/2014

Back Rates

Total Levies To Date for 2013/14

\$28,416,654
\$0
\$0
\$28,416,654

Total Rates Outstanding

10,670,676

Current Deferred Rates Amt (from Rate Reports)

\$ 463,579

Total Rates amount to be collected not including deferred

\$10,207,097

% of Rates Outstanding :

33.55%

Comment

The 2013/2014 Instalment Dates are as follows:

	4xinstalments	2xinstalments
1st Instalment	12/08/2013	12/08/2013
2nd Instalment	14/10/2013	16/12/2013
3rd Instalment	16/12/2013	
4th Instalment	10/02/2014	

Statistics as of 05/08/2013

10,368

Declaration of financial / conflict of interests to be recorded prior to dealing with each item.

65. Quarterly Report – Kalamunda Community Care September 2013

Previous Items	N/A
Responsible Officer	Director Corporate & Community Services
Service Area	Community Care
File Reference	CO-SPC-022
Applicant	N/A
Owner	N/A
Attachment 1	Volumes Report – Monthly Hours Worked by Category
Attachment 2	Community Care financial summary
Attachment 3	Meals on Wheels financial summary

PURPOSE

1. To receive the Community Care quarterly report – September 2013.

BACKGROUND

2. The Quarterly Report is prepared in accordance with the approved Kalamunda Home and Community Care (“KHACC”) Business Case (2010/2014). The basis of which is:

“That the Home and Community Care Services provided, be within the limits of the funding available and reviewed every quarter and reported to Council.”

DETAILS

3. The Review has concentrated on the following three core areas:
 - a. Service Delivery as per Contract
 - b. Financial Management
 - c. Workforce Management

Service Delivery

4. The Service Volumes Report (Attachment 1) shows how Community Care is performing in relation to its contracted service provision levels.
5. The Home and Community Care Contract contains service groups that cluster, where appropriate, like service types together. Service Group 1 includes the following service types: domestic assistance, personal care, social support respite and other food services.
6. Service Group 1 was contracted to provide hours of support against the service types listed in paragraph 5. This allows the service types to be adjusted to meet the needs of eligible clients regardless of the contracted number of hours against each service type.

-
7. Because of this service grouping, a service type such as domestic assistance can achieve higher than 100% of service delivery, providing other service types are not also achieving 100%. The hours are used in a flexible manner to address need.
 8. During this quarter, Community Care was contracted to provide 6,036 hours of across service Group 1 to eligible community members. 3,256 hours were provided (54%). During this quarter services have reopened to new referrals, this quarter has been impacted by a public holiday.
 9. It is anticipated services may increase during the October to December quarter as clients health statuses tend to improve with the weather, resulting in a need to re-engage with their community.
 10. Community Care will review statistics of client intake and client exits for the coming quarter as well as determining from client exit surveys the reasons why services have been ceased.

Domestic Assistance (Service Group 1)

11. During this quarter Community Care was contracted to provide 2,874 hours of domestic assistance to eligible community members. 2,546 hours were provided (89%).
12. This is an increase of 143 hours compared to last quarter. Domestic Assistance had an intake of 32 clients and exited 12 during the quarter, resulting in the client base increasing by 20.
13. Impacts on these hours include 366.5 cancelled hours due to clients having other commitments, illness or being hospitalised. Had these hours been provided this would total 101% of contracted hours.

In Home Respite (Service Group 1)

14. Community Care was contracted to provide 450 hours of In Home Respite to eligible community members. 61 hours were provided (13.5%). This is an increase of 28 hours compared to last quarter.
15. In Home Respite is a service type that does not receive many referrals. This is due largely to primary carers being reluctant to allow another person to step into their role, even for a few hours. No new referrals for support were received during this quarter. Carers usually access In Home respite due to a crisis situation or when a client prefers not to attend a centre based program. Centre based referrals have remained open and continue to be steady.

Other Food Services (Service Group 1)

16. Community Care was contracted to provide 96.5 hours of other food services to eligible community members this quarter. 9 hours were provided (9%).
17. This included an increase of 14 hours that was negotiated when the Meals on Wheels volume was reduced at the end of 2012/2013.

-
18. Other Food Services is a service type that the assessors are not referring to. Feedback has been provided to the Sector Development Team and CommunityWest who oversee the Regional Assessment Team Project.

Social Support (Service Group 1)

19. During this quarter, Community Care was contracted to provide 1,875 hours of social support to eligible community members. 623 hours were provided (33%).
20. This is an increase of 42 hours compared to last quarter. Social Support had an intake of 9 clients and exited 12 during the quarter, resulting in the client base decreasing but hours delivered increasing which is positive.
21. Impacts on these hours include 66.5 hours cancelled due to clients having other commitments, illness or being hospitalised. Had these hours been provided this would total 37% of contracted hours.
22. There is a service competition between social support and centre based day care. A referral for support will be dependent on whether an individual client prefers to engage socially in a group setting (Centre Based Day Care) or individually (Social Support). The current trend in this region leans to Centre Based Day Care.

Personal Care (Service Group 1)

23. During this quarter, Community Care was contracted to provide 937 hours of personal care to eligible community members. 210 hours were provided (22%).
24. Impacts on these hours include 81 hours cancelled due to clients having other commitments, illness or being hospitalised. Had these hours been provided this would total 31% of contracted hours.
25. The bulk of referrals received for personal care are to support clients to manage their medications. In this instance each client's support may only be for 15 minutes, which addresses their need.

Centre Based Day Care (Service Group 4)

26. Community Care was contracted to provide 9,979 hours of centre based day care to eligible community members this quarter. 7,702 hours were provided (77%)
27. Impacts on these hours include 3012 that were not provided due to client free days, public holidays and clients having other commitments, illness or being hospitalised. Had these hours been provided this would total 107% of contracted hours.

Meals on Wheels (Service Group 6)

28. During this quarter, Community Care was contracted to provide 2,444 meals to eligible community members. 1,321 meals were provided (54%).

-
29. Impacts on these meals include 56 meals cancelled due to clients having other commitments, illness or being hospitalised. Had these meals been provided this would total 56% of contracted meals.

Transport (Service Group 7)

30. During this quarter, Community Care was contracted to provide 6,816 one way trips to eligible community members. 3,780 one way trips were provided (55%).
31. Impacts on these one way trips include 1,063 trips cancelled due to the day centre not being operational (client free day) and clients having other commitments, illness or being hospitalised. Had these trips been provided this would total 71% of contracted one way trips.

Counselling Support Information and Advocacy (Service Group 9)

32. During this quarter, Community Care was contracted to provide 644 hours of counselling, support, information and advocacy to eligible community members. 196 hours were provided (30%).
33. The accuracy of reporting against this service support is dependent on each individual staff member to capture and record episodes of supporting a client or carer with Counselling Support Information and Advocacy.

Home Maintenance (Service Group 10)

34. During this quarter Community Care was contracted to provide 1,791 hours of home maintenance to eligible community members. 1,167 were provided (65 %).
35. Impacts on these hours include 89.5 hours cancelled due to clients having other commitments, illness or being hospitalised. Had these hours been provided this would total 70% of contracted hours. Where possible, a replacement service is offered for scheduling, however, it is not always accepted.

Community Visitors Scheme

36. During this quarter, Community Care was contracted to provide 270 visit occasions to 45 residential in Commonwealth funded aged care homes. 116 visits occurred (43%).
37. This is significantly less than most quarters, it is expected this is due to the accuracy and timing of volunteer reports. The Community Visitor Scheme Officer reported most data has still not been received for the quarter.

Community Aged Care Packages (“CACP”)

38. During this quarter, Community Care was contracted to provide 20 packages to eligible community members. Twelve packages were provided (60%).

Workforce Management

39. Community Care has successfully recruited three experienced support workers.

STATUTORY AND LEGAL CONSIDERATIONS

40. Nil.

POLICY CONSIDERATIONS

41. Nil.

COMMUNITY ENGAGEMENT REQUIREMENTS

42. Nil.

FINANCIAL CONSIDERATION

43. The Community Care Program has a reported surplus of \$346,764. It should be noted this figure includes Grant income received in advance of \$210,000. This operating surplus allows scope to increase the number of in home hours provided, subject to demand for these services increasing.
44. The Meals on Wheels Program has a reported surplus of \$9,527. Grant income has been received in advance. In addition a significant number of invoices for the provision of meals by the City of Stirling had not been received for payment as of the 30 September 2013. Taking these factors into consideration the program has an estimated operating deficit of \$3,500 and is on budget.

STRATEGIC COMMUNITY PLAN

Strategic Planning Alignment

45. *Kalamunda Advancing: Strategic Community Plan to 2023*

OBJECTIVE 1.1 - To be a community that cares for its aged and frail and those less fortunate.

Strategy 1.1.2 Continue to deliver relevant and effective programs to our elderly so that they can feel socially connected and supported from within the community

SUSTAINABILITY

Social Implications

46. *Shire of Kalamunda Aged Accommodation Strategy 2008:*

6.1 A strong desire to "age in place" is now the well-established preference for older people and is a key theme that underlies Commonwealth and State Government policy and programs. This encompasses being able to continue to live in the familiar surroundings of the home and local

environment as independently as possible, and with support services if required.

Economic Implications

47. Nil.

Environmental Implications

48. Nil.

RISK MANAGEMENT CONSIDERATIONS

49.	Risk	Consequence	Likelihood	Mitigation
	Surplus funding as a result of declining referrals for support	High	High	Continue to promote Community Care as provider of choice in region. Ensure recruitment and retention strategies are fully utilised. Continue to seek ways to increase service volume within the scope of WA HACC service provision guidelines Continue to analyse and evaluate services delivery statistics monthly to identify trends and opportunities for improvement.

OFFICER COMMENT

50. Community Aged Care is undergoing major reform and in the coming years the way in which the Shire has historical delivered services will continue to change.

51. While this reform takes place contracts have not altered. Therefore while the Shire actively aims to deliver services within a philosophy of wellness, that is outcome focused, the contracts are still written in a way that places the emphasis on outputs and volumes.

52. Some service levels may decline or not show an increase, however this reflects wellness. Through assessment Clients are being provided with services they need, and in some instances the support required is only short term. All referrals sent to KHACC are being responded to and clients identified needs are being met.

-
53. With the pending shift of Home and Community Care to the Commonwealth, a range of national discussions are taking place in November to determine the future delivery of the Transport and Home Maintenance service types.
54. Community Care will actively participate in these discussions; all active clients who receive those supports have been informed as to how they can participate in the client discussions.

Voting Requirements: Simple Majority

OFFICER RECOMMENDATION (C&C 65/2013)

That Council:

1. Receives the Community Care Quarterly Report – September 2013.

Moved:

Seconded:

Vote:

Attachment 1

Community Care 13/14

Monthly Hours Worked By Category

OUTPUT DELIVERABLES		SERVICE VOLUME		Ave	Ave	July	Aug	Sept	Oct	Nov	Dec	Jan	Feb	Mar	Apr	May	Jun	ACTUAL	Contracte	Met	Variance
		P.A	P. Mth	12/13	13/14														YTD	d YTD	YTD
Service Group 1																					
DOMESTIC ASSISTANCE	1231	11,497	958	837	849	879	853	814										2,546	2,874	88.56%	-329
SOCIAL SUPPORT	1222	7,500	625	246	208	191	236	196										623	1,875	33.21%	-1,252
PERSONAL CARE	1232	3,748	312	104	70	76	76	58										210	937	22.36%	-728
OFS	1234	386	32	3	3	5	2	2										9	97	8.81%	-88
RESPIRE	1224	1,800	150	12	20	13	28	20										61	450	13.56%	-389
TOTAL SERVICE GROUP 1																		3,447	6,233	55.31%	-2,786
Service Group 9																					
CSIA	1227	2,574	215	64	65	44	83	69										196	644	30.40%	-448
Service Group 4																					
CNTR BASED DAY CARE	1221	39,917	3,326	2,567	2,567	2,592	2,746	2,364										7,702	9,979	77.18%	-2,277
Service Group 10																					
HOME MAINTENANCE	1230	7,166	597	438	389	420	381	366										1,166	1,792	65.06%	-626
Service Group 7																					
TRANSPORT(occasions)	1229	17,988	1,499	394	432	433	434	428										1,295	4,497	28.80%	-3,202
TRANSPORT(CBDC)	1233	9,279	773	842	828	825	888	772										2,485	2,320	107.12%	165
TOTAL SERVICE GROUP 7																		3,780	6,817	55.45%	-3,037
TOTAL		101,855	8,488	5,506	5,430	5,476	5,727	5,088	0	0	0	0	0	0	0	0	0	16,290	25,464	64%	-11,959

OUTPUT DELIVERABLES		SERVICE VOLUME		Ave	Ave	July	Aug	Sept	Oct	Nov	Dec	Jan	Feb	Mar	Apr	May	Jun	ACTUAL	Contracte	Met	Variance
		Total	P. Mth	12/13	13/14														YTD	d YTD	YTD
Service Group 6																					
MEALS ON WHEELS		9,778	815	512	440	495	441	385										1,321	2,445	54%	-1,124

Attachment 2

Home and Community Care Service 2013/2014		
INCOME AND EXPENDITURE	Budget 2013/14 Jul - Sept	Actuals 2013/14 Jul - Sept
Recurrent Income and Expenditure		
Income		
Fees - Adult Day Care Attendance	(11,694)	(10,658)
Fees - Adult Day Care Transport	(5,748)	(6,267)
Fees - In Home Respite	(303)	(488)
Fees - Social Support	(4,500)	(4,936)
Fees - Transport / Shoppers Bus	(8,934)	(7,428)
Fees - Personal Care	(2,835)	(1,652)
Fees - Domestic Assistance	(21,000)	(20,205)
Fees - Gardening	(11,289)	(9,263)
Fees - Other Food Services	(93)	(72)
Fees - Meals / Brokerage Adult Day Care	(15,867)	(21,016)
Notional Income - Volunteer	(10,530)	(10,524)
Other Income	0	-
Government Grants	-673,592	(892,740)
Total Recurrent Income	(766,385)	(985,249)
Expenses		
Salaries and Wages and on costs	500,913	435,802
Leave Accruals	35,373	35,402
Workers Compensation	45,342	18,036
Recruitment	1,236	0

Volunteer Notional Expenditure	10,530	10,524
Contractors	82,065	0
Accommodation Expenses	22,536	23,780
Motor Vehicle Expenses	12,498	18,242
Fringe Benefits Tax	2,490	2,500
Insurance	534	774
Printing and Stationery	933	640
Subscriptions	954	4,121
Purchases - Consumables / Materials	4,956	5,973
Purchases - Sundry	2,268	298
Depreciation	19,887	22,110
Audit	864	0
Management Fee - Administration and Accounting	30,837	28,121
Management Fee - Human Resources	8,391	6,110
Management Fee - Information Technology	7,185	12,908
Meal Expenses - Clients	15,837	13,144
Total Recurrent Expenditure	805,629	638,485
Net Recurrent Income/Expenses	39,244	(346,764)

Note:
 As of 30/09/13 - 30% of the annual grant and 100% of the cost supplement has been received. \$210,000 of this income should be regarded as income in advance - this would reduce the net operating surplus to \$136,764

Attachment 3

Income / Expenditure Description	Annual Budget 2013/14	Budget 2013/14 Jul - Sept	Actuals 2013/14 Jul - Sept
	\$	\$	\$
Meals on Wheels			
Recurrent Income and Expenditure			
Income			
Contributions - Notional Income Volunteers	(27,234)	(6,807)	(6,809)
Fees - MOW's	(83,100)	(20,772)	(14,203)
Government Grants - State Operating	(14,353)	(3,588)	(6,681)
Total Recurrent Income	(124,687)	(31,167)	(27,692)
Expenses			
Employment Costs			
Shire Service Fees	10,707	3,104	2,821
Volunteer Reimbursements (Delivery / Fuel)	8,700	2,175	2,325
Notional Expenditure Volunteers	27,234	6,807	6,809
Purchases - Consumables	93,600	23,397	6,061
Purchases - Sundry	2,846	711	149
Total Recurrent Expenses	143,087	36,194	18,165
Net Recurrent Income/Expenses	18,400	5,027	(9,527)
Net Subsidy (Contribution to General Funds)	18,400	5,027	(9,527)

Note:

The City of Stirling's invoices for August /September meals were not received as of 30/09/13 - anticipated total expense: \$9,500.
 The slippage for 12/13 was confirmed in October - the adjustment to the 13/14 grant will reduce the total grant for 13/14 to \$12,655. (The slippage calculation is based on the number of meals delivered in a financial year and a recalculation of the grant due - the difference is deducted from the grant for the following year).
 Taking into consideration the above two factors the estimated deficit as of 30/09/2013 would be \$3,500 (not a surplus of \$9,527 as shown).

Declaration of financial / conflict of interests to be recorded prior to dealing with each item.

66. Appointment of Community Representatives to the Disability Access and Inclusion Advisory Committee (DAIAC)

Previous Items	OCM 185/2011
Responsible Officer	Director Corporate & Community Services
Service Area	Home and Community Care
File Reference	LM-CO-CCS-041/2
Applicant	N/A
Owner	N/A

PURPOSE

1. To consider the appointment of community representatives to the Disability Access and Inclusion Advisory Committee.

BACKGROUND

2. In accordance with the *Local Government Act 1995*, when a person is appointed as a member to an Advisory or Management Committee, the tenure of the person's membership expires at the next local government ordinary election day.
3. The Shire of Kalamunda local government election was held on 19 October 2013. It is now necessary to appoint Community representatives to various Committees.

DETAILS

4. As per the Terms of Reference for Disability Access and Inclusion Advisory Committee, the key components of the membership include:
 - A total membership of up to eight members, all of whom shall be appointed by Council. The term of appointment shall be up to two years; however retiring members are eligible for re-nomination.
 - Membership would ideally include representation in the following areas:
 - Physical
 - Sensory
 - Psychological disability
 - Intellectual disability
 - Parent/carer of a child with a disability
 - Youth with a disability
 - In accordance with the *Local Government Act 1995*, a minimum of three persons must be appointed to the Committee.
 - A Councillor shall be appointed to the Advisory Committee and is empowered to rule that any matter under consideration is to be referred, via the appropriate Committee, to Council for a decision.

-
- The Advisory Committee may second individuals on sub-committees and working groups, but secondments cannot be made to the main Committee.
 - The appointment of any person who is absent without leave for more than three consecutive meetings shall lapse and that person will need to seek Council reappointment to continue on the Committee for the duration of its term.
 - The Presiding Person and Deputy Presiding-Person shall be appointed from the body of the Committee.

5. Community nominations have been received from:

- Elizabeth Small*
- Mandy Corkill*
- Carol Everett*
- Peter Thorpe*
- Simon Dowling
- Diane Milligan
- Jean Campbell-Smiley*

**Past committee members*

6. In order for a meeting to proceed a quorum must be reached, with a membership of seven members the quorum will be five.

STATUTORY AND LEGAL CONSIDERATIONS

7. Section 5.11 (2)(d) of the *Local Government Act 1995 – Tenure of Committee Membership*.

POLICY CONSIDERATIONS

8. Nil.

COMMUNITY ENGAGEMENT REQUIREMENTS

9. Current Committee members were encouraged to re-nominate and an advertisement appeared on the Shire of Kalamunda website, the Hills Gazette and Echo newspapers. Nominations closed on 23 October 2013.

FINANCIAL CONSIDERATION

10. Nil.

STRATEGIC COMMUNITY PLAN

Strategic Planning Alignment

11. *Kalamunda Advancing: Strategic Community Plan to 2023*

OBJECTIVE 1.1 – To be a community that cares for its aged and frail and those less fortunate.

Strategy 1.1.3 Plan for and provide ongoing support for people with disabilities to feel included within the community

OBJECTIVE 1.8 – Support local community groups to grow, prosper and shape the future of Kalamunda.

Strategy 1.8.1 Provide leadership and assistance to local community groups and organisations.

SUSTAINABILITY

Social Implications

12. Community representation on Shire Management and Advisory Committees is integral to ensuring a link is maintained between Shire operations and community aspirations.

Economic Implications

13. Nil.

Environmental Implications

14. Nil.

RISK MANAGEMENT CONSIDERATIONS

15.

Risk	Likelihood	Consequence	Action/Strategy
Committee goals do not align with Shires objectives and strategies	Possible	Minor	Provide guidance to the Chair and at the first meeting communicate the Shires strategic plan and objectives
Interruption at meetings from irrelevant items brought to the committee	Possible	Minor	At the first meeting communicate the process of communications and documentation and importance of bringing relevant items to the committee.

OFFICER COMMENT

16. The nomination of Jean Campbell-Smiley as a community member is not supported as Ms Campbell- Smiley has been unable attended a meeting during the previous two year nomination period.

Voting Requirements: Absolute Majority

OFFICER RECOMMENDATION (C&C 66/2013)

That Council:

1. Accept and appoint the following six nominations to the Disability Access and Inclusion Advisory Committee.
 - Elizabeth Small
 - Mandy Corkill
 - Carol Everett
 - Peter Thorpe
 - Simon Dowling
 - Diane Milligan

Moved:

Seconded:

Vote:

Declaration of financial / conflict of interests to be recorded prior to dealing with each item.

67. Appointment of Community Representatives to Management and Advisory Committees

Previous Items	OCM 185/2011
Responsible Officer	Director Corporate & Community Services
Service Area	Community Development
File Reference	N/A
Applicant	N/A
Owner	N/A

Attachment 1 Committee Nominations 2013

PURPOSE

1. To consider the appointment of community representatives to the following Management and Advisory Committees:
 - Ray Owen Sports Centre Management Committee (ROSCMC)
 - Kostera Oval Advisory Committee (KOAC)
 - Hartfield Park Advisory Committee (HPAC)
 - Scott Reserve Advisory Committee (SRAC)
 - Falls Farm Advisory Committee (FFAC)
 - Jack Healy Advisory Committee (JHAC)

BACKGROUND

2. In accordance the *Local Government Act 1995*, when a person is appointed as a member to an Advisory or Management Committee, the tenure of the person's membership expires at the next Local Government Ordinary Election Day.
3. The Local Government elections were held on 19 October 2013. It is now necessary to appoint community representatives to the various Committees.

DETAILS

4. As per the Terms of Reference for ROSCMC, key components of the membership include:

The membership of the Management Committee shall not exceed six (6) members, comprising the following members –

 - Two representatives from the Kalamunda & Districts Netball Association, appointed from a meeting of that Association.
 - Two representatives from the Kalamunda & Districts Basketball Association, appointed from a meeting of that Association.
 - Two representatives from the Kalamunda Shire Council, one member being a shire councillor and an appointed non-voting staff member.
 - The term of appointment shall be 2 years unless the appointment of an Association representative is changed by that Association or Council elects to reappoint any or all members for a further term.

-
- The appointment of any person who is absent without leave for more than three consecutive meetings shall lapse. Members who resign may have their places taken by newly appointed persons.
 - A Councillor shall be appointed to the Management Committee and is empowered to rule that any matter under consideration is to be referred, via the appropriate Committee, to Council for a decision.
 - The Management Committee may second members on sub-committees and work groups, but secondments cannot be made to the Management Committee.
- 5.
- As per the Terms of Reference for KOAC, HPAC, SRAC, JHAC and FFAC, the key components of the membership include:
 - A total membership of up to eight (8) members, all of whom shall be appointed by Council. The term of appointment shall be up to two years; however retiring members are eligible for re-nomination.
 - Membership shall include one representative from each user group of the facility or other interested people.
 - In accordance with the Local Government Act 1995, a minimum of three (3) persons must be appointed to the Committee.
 - A Councillor shall be appointed to the Advisory Committee and is empowered to rule that any matter under consideration is to be referred, via the appropriate Committee, to Council for a decision.
 - The Advisory Committee may second individuals on sub-committees and working groups, but secondments cannot be made to the main Committee.
 - The appointment of any person who is absent without leave for more than three consecutive meetings shall lapse and that person will need to seek Council reappointment to continue on the Committee for the duration of its term.
 - The Presiding Person and Deputy Presiding-Person shall be appointed from the body of the Committee.
6. A list of the community members nominated for the various committees is attached (Attachment 1).

STATUTORY AND LEGAL CONSIDERATIONS

7. Section 5.11 (2)(d) of the *Local Government Act 1995 – Tenure of Committee Membership*.

POLICY CONSIDERATIONS

8. Nil.

COMMUNITY ENGAGEMENT REQUIREMENTS

9. Officers undertook a number of initiatives to promote the opportunity to be a member of the community Management and Advisory Committees. These included invitations to existing members, direct promotion with Clubs and an advertisement in a local newspaper.

FINANCIAL CONSIDERATION

10. Nil.

STRATEGIC COMMUNITY PLAN

Strategic Planning Alignment

11. *Kalamunda Advancing: Strategic Community Plan to 2023*
- Strategy 1.8.1 Provide leadership and assistance to local community groups and organisations

SUSTAINABILITY

Social Implications

12. Community representation on Management and Advisory Committees is integral to ensuring a link is maintained between Shire operations and community aspirations.

Economic Implications

13. Nil.

Environmental Implications

14. Nil.

RISK MANAGEMENT CONSIDERATIONS

15. Nil.

OFFICER COMMENT

16. The list of nominees will provide sufficient membership to enable each of the Committees to operate in accordance with their Terms of Reference.

Voting Requirements: Absolute Majority

OFFICER RECOMMENDATION (C&C 67/2013)

That Council:

1. Appoints those nominees to the relevant Advisory or Management Committee as per (Attachment 1).

Moved:

Seconded:

Vote:

Attachment 1

**2013 – 2015 Community Representative Nominations to
Management & Advisory Committees**

JACK HEALEY CENTRE ADVISORY COMMITTEE	
Richard Vickers	Kalamunda Stamp Club
Maurice Clark	Kalamunda Senior Citizens Club
Ruth Jopling	Seniors Computer Class Group
Francis Dean	Red Hat Society
Rowland Ian Tarling	Kalamunda Community Learning Centre
Sally Attwater	Wednesday Card Ladies
Barry Lucas	Kalamunda Probus Club combined

KOSTERA OVAL ADVISORY COMMITTEE	
Jean Jeans	Kalamunda Lapidary Club
Kathy Ritchie	Kalamunda Senior High School
Glenn Docherty	Kalamunda Cricket Club
Mike Perry	Kalamunda & Districts Junior Football Club
Wayne Garwood	Lions Club of Kalamunda and the Kalamunda Show Committee

HARTFIELD PARK ADVISORY COMMITTEE	
Carlos Mendes	Forrestfield United Soccer Club
Terry Davidson	Forrestfield Football Club
Rex West	Forrestfield Flyers Tee-ball Club
Phillip Fawell	Kalamunda Districts Hockey Club
David Meier	Kalamunda Districts Hockey Club (Deputy)
Kevin Adams	Kalamunda Rugby Club
Jason Gill	Forrestfield Cricket Club

SCOTT RESERVE ADVISORY COMMITTEE	
Frank Scardifield	High Wycombe Cricket Club
Brent Scardifield	High Wycombe Cricket Club (Deputy)
Craig Gallagher	High Wycombe Amateur Football Club
Aaron Savory	High Wycombe Junior Football Club
Martyn Cresswell	Edney Primary School

FALLS FARM ADVISORY COMMITTEE	
Joan Saunders	Tranquil Oasis (Meditation & Relaxation Group)
Peter Goodall	Lesmurdie & Districts Community Association Inc (Deputy)
Pauline Tonkin	Community Representative
Derek Winter	Lions Club of Lesmurdie
Iris Jones	Lesmurdie & Districts Community Association Inc
John Kenny	Community Representative
Geraldine Smailes	Soroptimist International of Darling Downs

RAY OWEN SPORTS CENTRE MANAGEMENT COMMITTEE	
Nicole McKennay	Kalamunda and Districts Netball Association
Marian Rolfe	Kalamunda and Districts Basketball Association
Peter Hanson	Kalamunda and Districts Basketball Association
Tracey Clemesha	Kalamunda and Districts Netball Association

Declaration of financial / conflict of interests to be recorded prior to dealing with each item.

68. Pickering Brook Heritage Group Inc – Seeking Approval of Subsidy of Occupancy Costs

Previous Items	OCM 23/2013
Responsible Officer	Director Development Services
Service Area	Property Services
File Reference	N/A
Applicant	Pickering Brook Heritage Group Inc
Owner	N/A

Attachment 1 Letter from Pickering Brook Heritage Group Inc (ILT-147405) dated 25 August 2013

PURPOSE

1. To consider a request from Pickering Brook Heritage Group Inc (PBHG) for a subsidy of occupancy costs being for Volunteer and Public Liability Insurance.

BACKGROUND

2. At the Ordinary Council Meeting on 25 February 2013 Council adopted Lease Policy LEA1 – Community Groups' Lease Council Policy.
3. The associated procedure noted that the Shire may from time to time consider it warranted to subsidise an association in regard to building occupancy costs.

DETAILS

4. PBHG was established in 1994 for the purpose of preserving the history of the region.
5. The Group executed a new lease on 9 October 2013 in accordance with the policy.
6. The Shire reimbursed the Group for volunteers and public liability insurance during the term of the previous licence. A reimbursement payment of \$1,313.82 was made in 2012 for the Group's public liability of \$10,000,000 (Ten Million dollars) and volunteers' insurance.
7. The new lease policy requires public liability cover of \$20,000,000 (Twenty millions dollars).
8. Under the lease, the Group is responsible for all occupancy costs and minor maintenance of the leased premises.

STATUTORY AND LEGAL CONSIDERATIONS

9. Not budgeted. The budget will require an amendment in accordance with Section 6.8(1)(b) of *Local Government Act 1995*.

POLICY CONSIDERATIONS

10. Lease Policy LEA1.

COMMUNITY ENGAGEMENT REQUIREMENTS

11. Nil.

FINANCIAL CONSIDERATIONS

12. PBHG is seeking to cover costs of \$1,650 (excluding GST).

STRATEGIC COMMUNITY PLAN

Strategic Planning Alignment

13. *Kalamunda Advancing: Strategic Community Plan to 2023*

OBJECTIVE 1.8 – Support local community groups to grow, prosper and shape the future of Kalamunda.

Strategy 1.8.3 Proactively investigate opportunities that facilitate the establishment and/or growth of local community groups.

SUSTAINABILITY

Social Implications

14. The Pickering Brook Heritage facility provides a venue for the local residents to preserve and display items reflecting the district's history.

Economic Implications

15. Nil.

Environmental Implications

16. Nil.

RISK MANAGEMENT CONSIDERATIONS

- 17.
- | Risk | Likelihood | Consequence | Mitigation |
|---|------------|-------------|---|
| Council may resolve not to support the subsidy. | Possible | Minor | Inform Council of the previous subsidy and community benefit. |

OFFICER COMMENT

18. The Group has only recently signed up to the new lease and has not had the opportunity to fund raise to cover the cost.
19. If approved the Group will be informed that the subsidy is a one off.

-
20. As there is no budget allocation for Public Liability Insurance to allow expenditure of this type, a formal budget amendment is required. Funds to cover the expenditure will be sourced from the "CEO Donations" account.

Voting Requirements: Simple Majority

OFFICER RECOMMENDATION (C&C 68/2013)

That Council:

1. Approves the request for a one off subsidy to the Pickering Brook Heritage Group Inc of \$1,650 ex GST.
2. Notes that the funds are to be sourced from the budget item "CEO Donations" (a/c 150710.533).

Moved:

Seconded:

Vote:

Attachment 1

Letter from Pickering Brook Heritage Group Inc (ILT-147405) dated 25 August 2013

ILT - 147405

PC-01/257

Pickering Brook Heritage Group Inc.
C/- 39 Repatriation Rd
Pickering brook. 6076

25th August 2013

Shire of Kalamunda
2 Railway Rd
KALAMUNDA 6076

Re - LEASE AGREEMENT - PICKERING BROOK HERITAGE GROUP INC

Dear Sir/Madam,

We are in receipt of the new lease agreement and will be taking it to our AGM on 28th and return to your office as soon as it has been signed by our President.

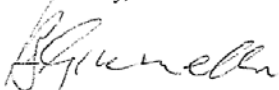
The Heritage Group is a small organization with limited funds and no regular funding from the Shire, we therefore rely on Fund raising activities and grants to assist us in our activities.

We therefore request the Shire of Kalamunda consider our application for re-imburement of Volunteer and Public Liability Insurance. It has been an on going arrangement with the Shire where we pay the due premium and then submit the invoice to the Shire for re-imburement.

We formerly request the Shire to consider our application in good faith.

If you require any further assistance please contact our Secretary Helen Ross on 9359 3334 or President Beverley Giumelli on 92938203.

Yours faithfully,


Giumelli
President

Declaration of financial / conflict of interests to be recorded prior to dealing with each item.

69. Zig Zag Scenic Drive Community Action Plan – Discussion Paper on Options and Possibilities – Public Consultation

Previous Items	December 2012 OCM187/2012
Responsible Officer	Chief Executive Officer
Service Area	Office of CEO
File Reference	HU-PUH-007
Applicant	N/A
Owner	Shire of Kalamunda

[Attachment 1](#)

[Zig Zag Scenic Drive Community Action Plan – Discussion Paper on Options and Possibilities](#)

PURPOSE

1. To receive the report - Zig Zag Scenic Drive Community Action Plan – Discussion Paper on Options and Possibilities for the purpose of inviting public comment over a period of 90 days concluding on Monday 24 February 2014.

BACKGROUND

2. During 2011 the Shire received a series of written complaints, and requests for action, from local residents in regard to the issue of anti-social behaviour in and around the Zig Zag Scenic Drive in Gooseberry Hill.
3. Residents within a 300 metre radius of the Zig Zag Scenic Drive were invited to attend a Community Forum in December 2011 to investigate options available to improve the issues being experienced by those living in close proximity to the Zig Zag Scenic Drive.
4. The purpose of the forum was to identify issues and suggest possible solutions that could be explored for reducing anti-social impacts in and around the Zig Zag Scenic Drive.
5. A second Community Forum was held in March 2012 followed by a third in June 2012. Community participants agreed on proposed recommendations to be put to Council for consideration in a Community Action Plan.
6. In December 2012 the Zig Zag Scenic Drive Community Action Plan was presented to Council. Council resolved to:
 1. *Receive The Zig Zag Scenic Drive Community Action Plan shown as (Attachment 1) to the Report.*
 2. *Requests the actions outlined in The Zig Zag Scenic Drive Community Action Plan to be investigated for cost implications and listed for further consideration the forthcoming budget deliberations in 2013.*
 3. *Requests the Chief Executive Officer write to the community participants advising them of the outcome and thanking them for their participation and input into the process.*

-
4. *Investigate options as to how this report can provide access and inclusion to all people, particularly seniors and people with disabilities.*
 5. *Investigate the option of gating the lower section of the Zig Zag from 6.00pm to 6.00am.*
7. The Community Action Plan contained key recommendations with each recommendation containing a set of actions being identified for investigation and/or implementation.

DETAILS

8. A Discussion Paper outlining options and possibilities has been prepared that deals with the following requested actions:
1. *Investigate the process required to enable the prohibition of motor vehicles from driving along the lower section of the Zig Zag Scenic Drive in order to create a motor vehicle free zone.*
 2. *Investigate the development of the lower Zig Zag Scenic Drive as a track for cycling, walking and hiking, and as a tourism attraction that lends itself to events and for use by Shire residents.*
 3. *Seek Council support to undertake a Shire-wide consultation process that assesses the levels of community support for the introduction of ratepayer-funded Shire wide security patrols service.*
 4. *Assess the feasibility of a service that would include residents being able to register their home when away on holidays, provide locally available officers to respond to unwanted people on private property, limit the impact of private parties on other residents and a host of other related services.*
 5. *Undertake a re-design of the upper Zig Zag car park to install appropriate traffic calming devices.*
 6. *Re-design the intersection of Tella Street, Lascelles Parade and Williams Street into a full intersection with stop sign to slow vehicle traffic movement.*
 7. *Liaise with Main Roads to increase the number of appropriate speed signs so that they are placed regularly along Williams Street through to Lascelles Parade.*
 8. *Action an immediate pruning program to reduce current vegetation growth that impinges on the road surface along the upper Zig Zag.*
 9. *Increase the level of service for regular pruning and increase the works program and annual budget to ensure regular pruning regime is implemented.*
 10. *Investigate options as to how to provide access and inclusion to all people, particularly seniors and people with disabilities.*

11. Investigate the option of gating the lower Zig Zag Scenic Drive overnight from 6.00pm to 6.00am.

9. During 2013 extensive research was undertaken to give further consideration to each of the above actions. This work has resulted in a discussion paper (Attachment 1) being developed which provides detailed comment, outlines issues, options and opportunities for furthering the actions.
10. The Discussion Paper provides a base from which a broader community conversation can now take place over the next three months. This comment period will provide Council with greater understanding of the broader community views about what is being proposed under the Zig Zag Community Action Plan.
11. Given the community involvement in this project, it is now appropriate that the public be given the opportunity to review and comment on the report.

STATUTORY AND LEGAL CONSIDERATIONS

12. Nil.

POLICY CONSIDERATIONS

COMMUNITY ENGAGEMENT REQUIREMENTS

13. Consultation has already been undertaken in the form of workshops. There is a continuing objective to work directly with the public throughout the process to ensure that the concerns and aspirations of the public are consistently understood and considered.
14. In accordance with Kalamunda Engages - Community Engagement Strategy 2013, the appropriate method of public participation is for a period of public consultation to ensure that the concerns and aspirations of the public are consistently understood and considered.
15. Council may wish to extend the community consultation period to include a public forum, however given that three forums have already been undertaken it is felt that another forum would not add any additional value.

FINANCIAL CONSIDERATIONS

16. Nil.

STRATEGIC COMMUNITY PLAN

Strategic Planning Alignment

17. *Kalamunda Advancing: Strategic Community Plan to 2023*
- OBJECTIVE 1.1 - To be a community that cares for its aged and frail and those less fortunate
- Strategy 1.1.3 Plan for and provide ongoing support for people with disabilities to feel included within the community.

OBJECTIVE 1.5 - To provide a safe environment for the entire community to enjoy.

Strategy 1.5.3 Work in partnerships with the community and other levels of government to achieve lasting improvements in community safety.

OBJECTIVE 2.3 - To encourage and facilitate healthy lifestyles through regular participation in recreational and leisure oriented activities.

Strategy 2.3.3 Plan for the improvement and expansion of the existing shared pathways network to ensure a high quality and consistent network is provided for walking, cycling and recreational hiking.

OBJECTIVE 5.4 - To be recognised as an excellent tourism destination with high levels of patronage.

Strategy 5.4.4 Identify funding and project opportunities to enhance the Shire both for residents and as a destination for visitors.

SUSTAINABILITY

Social Implications

18. The social value of the Zig Zag Scenic Drive to the community is significant and could be considered one of the most precious and valued landmarks within the Shire.

Economic Implications

19. Developing the Zig Zag Scenic Drive to be a tourist destination, as is highlighted in the Discussion Paper could generate economic benefits to the Shire.

Environmental Implications

20. The Zig Zag Scenic Drive contains vegetation in this area consisting of the Darling complex, low open woodlands. Vegetation along the roads adjacent to a regional park, irrespective of land ownership, is classed as environmentally sensitive meaning that in most cases vegetation removal will require a permit from Department of Parks and Wildlife.
21. Any vegetation removal requires careful consideration to minimise the impact and potential weed invasion which is prevalent in place along the drive. Increased usage of the Zig Zag may have a detrimental effect on the rich environmental values and this should be taken into account when any proposed development is to occur.

RISK MANAGEMENT CONSIDERATIONS

22.

Risks	Likelihood	Consequence	Mitigation/Strategy
No action is taken to address the concerns of local residents living around the Zig Zag	Low	High	Some key actions have already been undertaken and the reports being presented to Council provides a focus on the issues for the community.
Increasing human usage may cause environmental damage	High	High	Environmental advice and monitoring will be required at every stage of any proposed development occurring.
Increasing human activity may cause conflict with nearby residents	Medium	High	The local community must be closely engaged and supportive of any initiatives to increase visitation to the area.
Closing the Zig Zag to vehicles may cause an access and egress issue for emergency vehicles to Gooseberry Hill	High	High	The area is a fire prone area and it is very likely that Emergency Services will not support a closure.

OFFICER COMMENT

23. The report collates information from a number of business units: Community Development, Commercial Services, Home and Community Care and Engineering.
24. The report has been generated as a direct result of a public consultation process. It is entirely appropriate that the community now has the opportunity to provide comment.

Voting Requirements: Simple Majority

OFFICER RECOMMENDATION (C&C 69/2013)

That Council:

1. Receives the report - Zig Zag Scenic Drive Community Action Plan – Discussion Paper on Options and Possibilities shown as Attachment 1.
2. Request the Chief Executive Officer to advertise the Zig Zag Scenic Drive Community Action Plan – Discussion Paper on Options and Possibilities for the purpose of inviting public comment over a period of 90 days concluding on Monday 24 February 2014.

Moved:

Seconded:

Vote:

Attachment 1

[Click HERE to go to the attachment](#)

10.0 MOTIONS OF WHICH PREVIOUS NOTICE HAS BEEN GIVEN

11.0 QUESTIONS BY MEMBERS WITHOUT NOTICE

12.0 QUESTIONS BY MEMBERS OF WHICH DUE NOTICE HAS BEEN GIVEN

12.1 C&C 59 Debtors and Creditors Reports for the Period Ended 31 August 2013

Q. A Councillor queried EFT30669 for \$30,729 and asked what the modifications to a new Toyota Coaster Bus were. This question was taken on notice.

A. The modifications were made to a new KHACC bus. They included the installation of a wheelchair lift, removable seats etc.

12.2 C&C 59 Debtors and Creditors Reports for the Period Ended 31 August 2013

Q. A Councillor queried what the fees for "Trading in Thorough Fares/Surveillance" as shown on the Debtors Summary Report were for exactly. This question was taken on notice.

A. "Trading in Thoroughfares" fees are the annual fees applicable to permits issued under the Shire of Kalamunda *Trading on Thoroughfares & Public Places Local Law 2008* and relate to markets and stalls. Stalls include road side stalls and temporary food stalls.

Surveillance fees relate to the Food Act 2008 and are to cover the annual costs for undertaking inspections of food businesses. The actual fee is based on the risk assessment of the business which determines the frequency of inspection, and the size of the business. High risk premises require additional inspections and are charged a higher fee. Exact costs are listed in the Shire's 2013/2014 Schedule of Fees and Charges.

Q. Minor Improvements to Berle Way and Range View Road Intersection – Cr Dylan O'Connor (September 2013 C&C Meeting)

Could I have an update on the Berle Way and Range View Road intersections which I flagged with the Chief Executive Officer a few weeks ago? This question was taken on notice to follow up with the Engineering Department.

A. The layout of the two intersections at Kalamunda Road/Range View Road and Range View Road/Berle Drive have been reviewed by staff. It was noted that the upgrade works completed in recent years along Kalamunda Road have addressed the intersection geometry in an appropriate manner for the speed environment and proximity of the two intersections.

It is considered that further traffic treatments would be inappropriate for the majority of drivers and present a challenge to hoons, thus increasing issues in this location.

If the Shire were to request Main Roads to investigate the option for additional signage at this location, it is considered that Main Roads would be unlikely to support the installation of these. This is on the basis that the installation of

signage is unlikely to have an impact on driver behaviour in this area.
The recommended course of action is to encourage residents to report incidents of speeding and hoon behaviour to WA Police on 13 14 44, who use this information to allocate resources to enforcement activities.

13.0 URGENT BUSINESS APPROVED BY THE PRESIDING MEMBER OR BY DECISION

14.0 MEETING CLOSED TO THE PUBLIC

15.0 CLOSURE