

Corporate & Community Services Committee Meeting

Agenda for Monday 9 December 2013



**shire of
kalamunda**

NOTICE OF MEETING CORPORATE & COMMUNITY SERVICES COMMITTEE

Dear Councillors

Notice is hereby given that the next meeting of the Corporate & Community Services Committee will be held in the Council Chambers, Administration Centre, 2 Railway Road, Kalamunda on **Monday 9 December 2013 at 6.30pm**. Dinner will be served prior to the meeting, at 5.30pm.


Rhonda Hardy
Chief Executive Officer
5 December 2013

Our Vision and Our Values

Our Vision

The Shire will have a diversity of lifestyle and people. It will take pride in caring for the natural, social, cultural and built environments and provide opportunities for people of all ages.

Our Core Values

Service – We deliver excellent service by actively engaging and listening to each other.

Respect – We trust and respect each other by valuing our difference, communicating openly and showing integrity in all we do.

Diversity – We challenge ourselves by keeping our minds open and looking for all possibilities and opportunities.

Ethics – We provide honest, open, equitable and responsive leadership by demonstrating high standards of ethical behavior.

Our Aspirational Values

Prosperity – We will ensure our Shire has a robust economy through a mixture of industrial and commercial development.

Harmony – We will retain our natural assets in balance with our built environment.

Courage – We take risks that are calculated to lead us to a bold new future.

Creativity – We create and innovate to improve all we do.

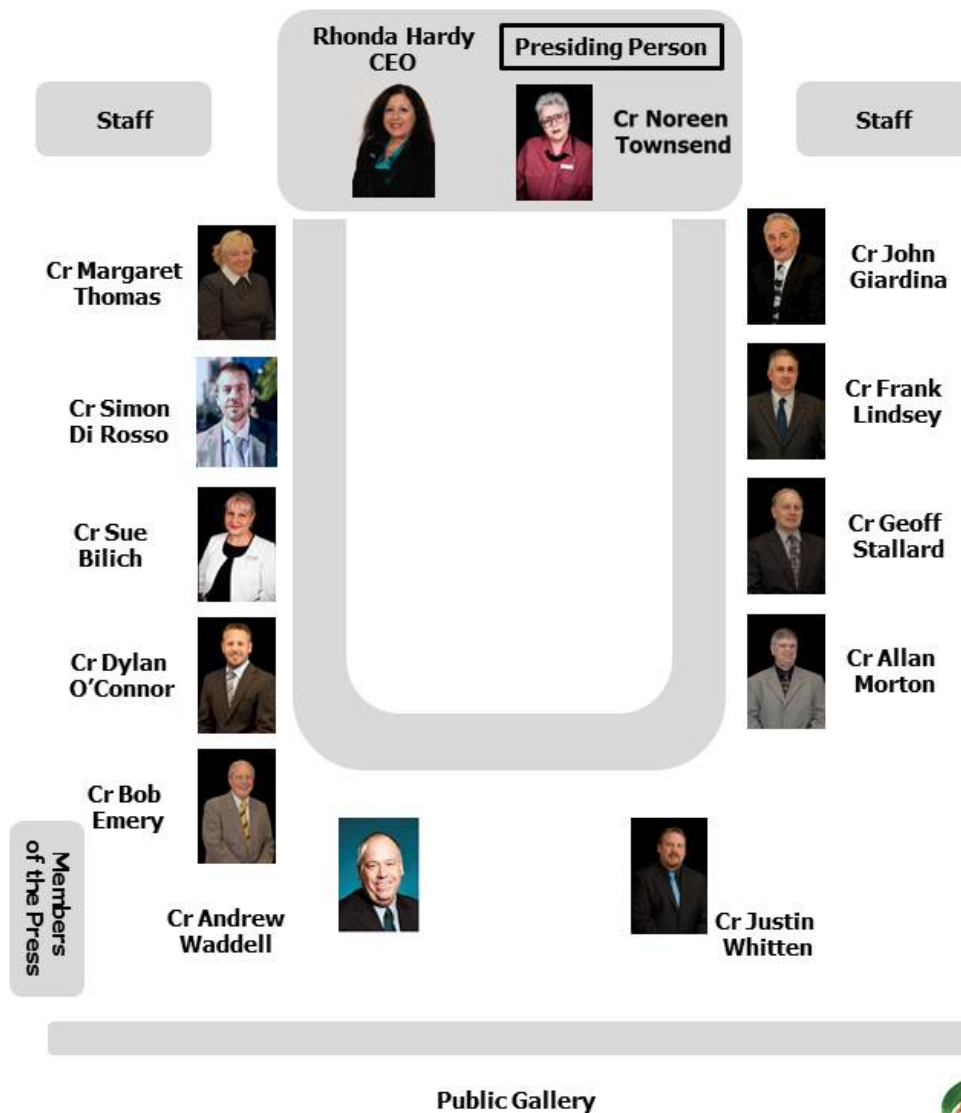


INFORMATION FOR THE PUBLIC ATTENDING COMMITTEE OR COUNCIL MEETINGS

Welcome to this evening's meeting. The following information is provided on the meeting and matters which may affect members of the public.

If you have any queries related to procedural matters, please contact a member of staff.

Council Chambers – Seating Layout



shire of
kalamunda

Standing Committee Meetings – Procedures

1. Standing Committees are open to the public, except for Confidential Items listed on the Agenda.
2. Shire of Kalamunda Standing Committees have a membership of all 12 Councillors.
3. Unless otherwise advised a Standing Committee makes recommendations only to the next scheduled Ordinary Council Meeting.
4. Members of the public who are unfamiliar with meeting proceedings are invited to seek advice prior to the meeting from a Shire Staff Member.
5. Members of the public are able to ask questions at a Standing Committee Meeting during Public Question Time. The questions should be related to the purposes of the Standing Committee.
6. Members of the public wishing to make a comment on any Agenda item may request to do so by advising staff prior to commencement of the Standing Committee Meeting.
7. Comment from members of the public on any item of the Agenda is usually limited to three minutes and should address the Recommendations at the conclusion of the report.
8. To facilitate the smooth running of the meeting, silence is to be observed in the public gallery at all times except for Public Question Time.
9. All other arrangements are in general accordance with Council's Standing Orders, the Policies and decision of person chairing the Committee Meeting.

Emergency Procedures

Please view the position of the Exits, Fire Extinguishers and Outdoor Assembly Area as displayed on the wall of Council Chambers.

In case of an emergency follow the instructions given by Council Personnel.

We ask that you do not move your vehicle as this could potentially block access for emergency services vehicles.

Please remain at the assembly point until advised it is safe to leave.

INDEX

1.0	OFFICIAL OPENING	6
2.0	ATTENDANCE, APOLOGIES AND LEAVE OF ABSENCE PREVIOUSLY APPROVED.....	6
3.0	PUBLIC QUESTION TIME.....	6
4.0	PETITIONS/DEPUTATIONS	6
5.0	CONFIRMATION OF MINUTES OF PREVIOUS MEETING.....	6
6.0	ANNOUNCEMENTS BY THE PERSON PRESIDING WITHOUT DISCUSSION.....	6
7.0	MATTERS FOR WHICH MEETING MAY BE CLOSED	6
8.0	DISCLOSURE OF INTERESTS.....	6
9.0	REPORTS TO COUNCIL	7
	70. CREDITORS ACCOUNTS PAID DURING THE PERIOD 6 NOVEMBER TO 20 NOVEMBER 2013	8
	71. SCHEDULE OF COUNCIL AND COMMITTEE MEETINGS 2014.....	48
	72. REINSTATEMENT OF COMMUNITY SAFETY AND CRIME PREVENTION ADVISORY COMMITTEE.....	53
	73. AMENDMENT TO LOCAL PLANNING SCHEME No. 3 – MODIFICATION TO THE CAR PARKING REQUIREMENT FOR SHOPS	61
10.0	MOTIONS OF WHICH PREVIOUS NOTICE HAS BEEN GIVEN.....	66
11.0	QUESTIONS BY MEMBERS WITHOUT NOTICE.....	66
12.0	QUESTIONS BY MEMBERS OF WHICH DUE NOTICE HAS BEEN GIVEN.....	66
13.0	URGENT BUSINESS APPROVED BY THE PERSON PRESIDING OR BY DECISION.....	68
14.0	MEETING CLOSED TO THE PUBLIC.....	68
15.0	CLOSURE	68

AGENDA

1.0 OFFICIAL OPENING

2.0 ATTENDANCE, APOLOGIES AND LEAVE OF ABSENCE PREVIOUSLY APPROVED

3.0 PUBLIC QUESTION TIME

A period of not less than 15 minutes is provided to allow questions from the gallery on matters relating to the functions of this Committee. For the purposes of Minuting, these questions and answers are summarised.

4.0 PETITIONS/DEPUTATIONS

5.0 CONFIRMATION OF MINUTES OF PREVIOUS MEETING

5.1 That the Minutes of the Corporate & Community Services Committee Meeting held on 18 November 2013 are confirmed as a true and accurate record of the proceedings.

Moved:

Seconded:

Vote:

Statement by Presiding Member

"On the basis of the above Motion, I now sign the minutes as a true and accurate record of the meeting of 18 November 2013".

6.0 ANNOUNCEMENTS BY THE PERSON PRESIDING WITHOUT DISCUSSION

7.0 MATTERS FOR WHICH MEETING MAY BE CLOSED

7.1

8.0 DISCLOSURE OF INTERESTS

8.1 Disclosure of Financial and Proximity Interests

- a. Members must disclose the nature of their interest in matters to be discussed at the meeting. (Sections 5.60B and 5.65 of the *Local Government Act 1995*.)
- b. Employees must disclose the nature of their interest in reports or advice when giving the report or advice to the meeting. (Sections 5.70 and 5.71 of the *Local Government Act 1995*.)

8.2 **Disclosure of Interest Affecting Impartiality**

- a. Members and staff must disclose their interest in matters to be discussed at the meeting in respect of which the member or employee had given or will give advice.

9.0 **REPORTS TO COUNCIL**

Please Note: declaration of financial/conflict of interests to be recorded prior to dealing with each item.

Declaration of financial / conflict of interests to be recorded prior to dealing with each item.

70. Creditors Accounts Paid During the Period 6 November to 20 November 2013

Previous Items	N/A
Responsible Officer	Director Corporate and Community Services
Service Area	Finance
File Reference	FI-CRS-002
Applicant	N/A
Owner	N/A

Attachment 1 Creditor Payments during the period 6 November to 20 November 2013.

PURPOSE

1. To receive creditors accounts paid during the period 6 November to 20 November 2013. (Attachment 1).

BACKGROUND

2. It is a requirement of the *Local Government (Financial Management) Regulations 1996 (Regulation 12)* that a list of Creditors' Accounts paid is compiled each month.
3. The report is required to show payee's name, the amount of the payment, the date of the payment, and sufficient information to identify the transaction.

DETAILS

4. Accordingly, the list of creditors paid during the period 6 November to 20 November 2013. (Attachment 1)

STATUTORY AND LEGAL CONSIDERATIONS

5. In accordance with the requirements of the *Local Government (Financial Management) Regulations 1996 (Regulation 13)* a list of accounts paid by the Chief Executive Officer is to be prepared each month and presented in the manner require as per the Regulation.

POLICY CONSIDERATIONS

6. Nil.

COMMUNITY ENGAGEMENT REQUIREMENTS

7. Nil.

FINANCIAL CONSIDERATIONS

8. Nil.

STRATEGIC COMMUNITY PLAN

Strategic Planning Alignment

9. *Kalamunda Advancing: Strategic Community Plan to 2023*

OBJECTIVE 6.8 – To ensure financial sustainability through the implementation of effective financial management, systems and plans.

Strategy 6.8.4 Provide effective financial services to support the Shire's operations and to meet sustainability planning, reporting and accountability requirements.

SUSTAINABILITY

Social Implications

10. Nil.

Economic Implications

11. Nil.

Environmental Implications

12. Nil.

RISK MANAGEMENT CONSIDERATIONS

13.

Risk	Likelihood	Consequence	Action/Strategy
If the Shire defaults on a payment to a creditor, the Shire runs the risk of a negative credit record resulting in potential future disruptions on cash flows and ability to obtain credit.	Low	Low	Payments are made in a timely manner within the agreed terms.

OFFICER COMMENT

14. Nil.

Voting Requirements: Simple Majority

OFFICER RECOMMENDATION (C&C 70/2013)

That Council:

1. Receives the list of creditors paid during the period 6 November to 20 November 2013 (Attachment 1) in accordance with the requirements of the *Local Government (Financial Management) Regulations 1996 (Regulation 12)*.

Moved:

Seconded:

Vote:

Attachment 1

**Shire of Kalamunda
 Creditors' Payments for the period 6 November to 20 November 2013**

Chq/EFT	Date	Name	Description	Amount
667	06/11/2013	AUSTRALIAN TAXATION OFFICE	TAXATION	143,175.95
668	07/11/2013	LES MILLS AUSTRALIA	MONTHLY LICENCE FEE	977.07
669	11/11/2013	COMMONWEALTH BANK - BUSINESS CARD	BUSINESS CORPORATE CARD - VARIOUS PURCHASES HACC ACTIVITY OFFICER \$1746.58 LIBRARY SERVICES TEAM LEADER \$985.80 HEALTHY COMMUNITIES TEAM LEADER \$44.09 FUNCTIONS CO-ORDINATOR \$2951.04 CO-ORDINATOR PROCUREMENT \$3524.50 MANAGER HR \$1977.98 DAY CENTRE CO-ORDINATOR \$105.55	11,335.54
670	11/11/2013	WESTERN AUSTRALIAN TREASURY CORPORATION	LOAN NO 216 INTEREST PAYMENT	4,508.52
671	11/11/2013	IINET TECHNOLOGIES PTY LTD	INTERNET ACCESS	829.00
672	15/11/2013	COMMONWEALTH BANK - BUSINESS CARD	BUSINESS CORPORATE CARD - VARIOUS PURCHASES FUNCTIONS CO-ORDINATOR -	2,993.35
673	15/11/2013	WESTERN AUSTRALIAN TREASURY CORPORATION	LOAN NO 217 INTEREST PAYMENT	2,577.48
674	20/11/2013	AUSTRALIAN TAXATION OFFICE	TAXATION	140,981.17
EFT32244	25/10/2013	JACKSON MCDONALD LAWYERS	LEGAL EXPENSES	1,619.00
EFT32245	07/11/2013	MOTORCHARGE - WRIGHT EXPRESS FUEL CARDS AUSTRALIA LTD	FUEL - PERIOD ENDING 31/10/13	8,663.70
EFT32246	07/11/2013	SALMAT MEDIAFORCE PTY LTD	DISTRIBUTION OF FLYERS FOR EVENTS WITHIN THE SHIRE	1,142.15
EFT32247	07/11/2013	CALLTECH PTY LTD	TELEPHONE HEADSET SUPPLIES / ACCESSORIES	480.00
EFT32248	07/11/2013	NEVERFAIL SPRINGWATER LTD (KALA LIB)	BOTTLED WATER SUPPLIES / MAINTENANCE	31.25
EFT32249	07/11/2013	AUSTRAL MERCANTILE COLLECTIONS PTY LTD	DEBT COLLECTION FEES FOR RATES	88.00
EFT32250	07/11/2013	KONICA MINOLTA BUSINESS SOLUTIONS P/L	PHOTOCOPYING CHARGES / MAINTENANCE FEES	1,241.98

Shire of Kalamunda
Creditors' Payments for the period 6 November to 20 November 2013

Chq/EFT	Date	Name	Description	Amount
EFT32251	07/11/2013	BRUMBY'S KALAMUNDA	CATERING SUPPLIES	8.00
EFT32252	07/11/2013	PICTON PRESS	PRINTING OF BROCHURES FOR VARIOUS EVENTS	76.52
EFT32253	07/11/2013	THE PLANNING GROUP WA PTY LTD	PROFESSIONAL FEES - PROJECT SCOPING & BRIEF PREPARATION PICKERING BROOK MRS AMENDMENT.	1,100.00
EFT32254	07/11/2013	PARAMOUNT SECURITY SERVICES	SECURITY - WALK THE ZIG ZAG 2013	2,402.40
EFT32255	07/11/2013	BEES HIRE & SALES	SUPPLY AND ERECT SCAFFOLD AND OTHER EQUIPMENT HIRE	266.20
EFT32256	07/11/2013	ROBYN BEARDSSELL	PAYMENT TO CONSIGNMENT SUPPLIER FOR GOODS SOLD AT THE ZIG ZAG CULTURAL CENTRE 01/10/13 - 31/10/13	28.00
EFT32257	07/11/2013	JEFF & KAREN SANDERS	PLANNING APPLICATION FEE REFUND	147.00
EFT32258	07/11/2013	ELIZABETH M GARNETT	FOOTPATH DEPOSIT REFUND	1,000.00
EFT32259	07/11/2013	CARMEL VALLEY CHOCOLATES	PAYMENT TO CONSIGNMENT SUPPLIER FOR GOODS SOLD AT THE ZIG ZAG CULTURAL CENTRE 01/10/13 - 31/10/13	218.40
EFT32260	07/11/2013	ZANTHORREA NURSERY	GARDEN / RESERVE SUPPLIES	252.55
EFT32261	07/11/2013	WAYNE BENTLEY	SALE OF ARTWORK - SPRING IN THE HILLS EXHIBITION	84.00
EFT32262	07/11/2013	GILL BAXTER	PAYMENT TO CONSIGNMENT SUPPLIER FOR GOODS SOLD AT THE ZIG ZAG CULTURAL CENTRE 01/10/13 - 31/10/13	63.00
EFT32263	07/11/2013	DOUG & ANNETTE MITCHELL	FOOTPATH DEPOSIT REFUND	1,000.00
EFT32264	07/11/2013	WA LOCAL GOVERNMENT SUPERANNUATION PLAN	SUPERANNUATION CONTRIBUTIONS	87,176.37
EFT32265	07/11/2013	SHIRE OF KALAMUNDA STAFF SOCIAL CLUB	PAYROLL DEDUCTIONS	384.00
EFT32266	07/11/2013	CHILD SUPPORT AGENCY	PAYROLL DEDUCTIONS	815.01

Shire of Kalamunda
Creditors' Payments for the period 6 November to 20 November 2013

Chq/EFT	Date	Name	Description	Amount
EFT32267	07/11/2013	AUSTRALIA POST	POSTAL EXPENSES / COUNTER BILLPAY TRANSACTION FEES	7,548.79
EFT32268	07/11/2013	COVS PARTS PTY LTD	PLANT / VEHICLE PARTS	1,499.90
EFT32269	07/11/2013	LANDGATE	ACCESS TO SLIP SUBSCRIPTION SERVICES FOR UNLIMITED USERS	3,822.00
EFT32270	07/11/2013	GULLY VIEWS NEWSAGENCY	SUBSCRIPTIONS & NEWSPAPERS FOR VARIOUS LOCATIONS	578.07
EFT32271	07/11/2013	KALAMUNDA TOYOTA	PLANT / VEHICLE PARTS	357.89
EFT32272	07/11/2013	MCLEODS BARRISTERS & SOLICITORS	LEGAL EXPENSES	602.30
EFT32273	07/11/2013	MIDWASTE - TRANSPACIFIC CLEANAWAY PTY LTD	WASTE / RECYCLING SERVICES	938.81
EFT32274	07/11/2013	LANDGATE - VALUATIONS	VALUATIONS FOR VARIOUS LOCATIONS	83.64
EFT32275	07/11/2013	WALKERS HARDWARE (MITRE 10)	HARDWARE SUPPLIES	507.86
EFT32276	07/11/2013	MCKAY EARTHMOVING PTY LTD	PLANT EQUIPMENT AND OPERATOR HIRE FOR VARIOUS LOCATIONS	47,825.79
EFT32277	07/11/2013	EASTERN METROPOLITAN REGIONAL COUNCIL	DOMESTIC / WASTE CHARGES - RED HILL TIP & MATTRESS DISPOSAL FEES	153,357.64
EFT32278	07/11/2013	ZIPFORM PTY LTD	PRINTING AND DISTRIBUTION OF DOG REGISTRATION 2013 FORMS	665.50
EFT32279	07/11/2013	FASTA COURIERS	COURIER FEES	733.40
EFT32280	07/11/2013	THE WATERSHED WATER SYSTEMS	RETICULATION PARTS FOR VARIOUS RESERVES	5,601.83
EFT32281	07/11/2013	KALA BOB KATS PTY LTD	PLANT EQUIPMENT AND OPERATOR HIRE FOR VARIOUS LOCATIONS	4,871.83
EFT32282	07/11/2013	LGIS WORKCARE SCHEME	LGIS WORKCARE INSURANCE - 30/06/13 - 30/06/14	202,872.23
EFT32283	07/11/2013	LGIS LIABILITY SCHEME	LGIS LIABILITY INSURANCE - 30/06/13 - 30/06/14	167,275.48
EFT32284	07/11/2013	GRIMES CONTRACTING PTY LTD	CONTRACTOR BUILDING MAINTENANCE FOR VARIOUS BUILDINGS	12,592.49

Shire of Kalamunda
Creditors' Payments for the period 6 November to 20 November 2013

Chq/EFT	Date	Name	Description	Amount
EFT32285	07/11/2013	KALAMUNDA STATE EMERGENCY SERVICE	REIMBURSEMENT - GOODS AND SERVICES	3,873.76
EFT32286	07/11/2013	HILL TOP TROPHIES (MILPRO WA)	SUPPLY OF NAME BADGES	219.45
EFT32287	07/11/2013	FOODWORKS FRESH FORRESTFIELD	GROCERY SUPPLIES	1,299.08
EFT32288	07/11/2013	LO-GO APPOINTMENTS	HIRE OF TEMPORARY STAFF FOR DEPOT / ADMIN	9,441.34
EFT32289	07/11/2013	STAFFLINK INDUSTRIAL	HIRE OF TEMPORARY STAFF FOR DEPOT / ADMIN	5,637.45
EFT32290	07/11/2013	WORK CLOBBER (MIDLAND)	PROTECTIVE CLOTHING SUPPLIES	2,089.07
EFT32291	07/11/2013	FLEXI STAFF PTY LTD	HIRE OF TEMPORARY STAFF FOR DEPOT / ADMIN	4,151.93
EFT32292	07/11/2013	GILFORD BUILDING SERVICES	FOOTPATH DEPOSIT REFUNDS	2,400.00
EFT32293	07/11/2013	LOVEGROVE TURF SERVICES	TURF MAINTENANCE / SERVICES AT VARIOUS LOCATIONS	2,530.00
EFT32294	07/11/2013	KALAMUNDA & DISTRICTS HISTORICAL SOCIETY	PAYMENT TO CONSIGNMENT SUPPLIERS FOR GOODS SOLD AT THE ZIG ZAG CULTURAL CENTRE 01/10/13 - 31/10/13 AND ADJUSTMENT TO ANNUAL CONTRIBUTION AS PER LEASE.	889.25
EFT32295	07/11/2013	KALAMUNDA CHRISTIAN SCHOOL	HALL AND KEY BOND REFUND	450.00
EFT32296	07/11/2013	CRABBS KALAMUNDA (IGA)	GROCERY SUPPLIES	825.28
EFT32297	07/11/2013	STAGE FX	TECHNICIAN SERVICES FOR VARIOUS EVENTS	4,150.00
EFT32298	07/11/2013	VENTURA HOMES PTY LTD	FOOTPATH DEPOSIT REFUND	1,000.00
EFT32299	07/11/2013	KALAMUNDA VOLUNTEER BUSHFIRE BRIGADE	REIMBURSEMENT COSTS FOR VOLUNTEER BUSHFIRE BRIGADE	2,174.94
EFT32300	07/11/2013	DEVON SETTLEMENTS	RATES REFUND	207.29
EFT32301	07/11/2013	HOME GROUP WA PTY LTD	FOOTPATH DEPOSIT REFUND	1,000.00
EFT32302	07/11/2013	KALAMUNDA CAROLS BY CANDLELIGHT INC	CONTRIBUTION TO CAROLS BY CANDLELIGHT AT STIRK PARK	4,120.00
EFT32303	07/11/2013	ASHMY PTY LTD	FOOTPATH DEPOSIT REFUND	700.00
EFT32304	07/11/2013	APG HOMES	FOOTPATH DEPOSIT REFUND	700.00

Shire of Kalamunda
Creditors' Payments for the period 6 November to 20 November 2013

Chq/EFT	Date	Name	Description	Amount
EFT32305	07/11/2013	LIONS CLUB OF KALAMUNDA	APPLICATION FEES LIONS CLUB ART AWARD	210.00
EFT32306	07/11/2013	HAWLEY'S BOBCAT SERVICE	PLANT EQUIPMENT AND OPERATOR HIRE FOR VARIOUS LOCATIONS	7,126.90
EFT32307	07/11/2013	DEPARTMENT OF FIRE AND EMERGENCY SERVICES (DFES)	50% COST SHARING FOR THE COMMUNITY FIRE MANAGER FOR THE PERIOD 28/06/13 - 26/09/13 AS PER THE MOU BETWEEN DFES AND THE SHIRE OF KALAMUNDA	19,677.16
EFT32308	07/11/2013	J CORP PTY LTD	FOOTPATH DEPOSIT REFUND	1,000.00
EFT32309	07/11/2013	C Y BOBCATS	PLANT EQUIPMENT AND OPERATOR HIRE FOR VARIOUS LOCATIONS	3,575.00
EFT32310	07/11/2013	HILL TOP GROUP PTY	CONTRACTOR BUILDING MAINTENANCE FOR VARIOUS BUILDINGS	10,415.38
EFT32311	07/11/2013	PARKS AND LEISURE AUSTRALIA	RENEWAL OF MEMBERSHIP FOR PARKS AND LEISURE AUSTRALIA	632.50
EFT32312	07/11/2013	KAREN ANNE COBURN	KEY BOND REFUND	50.00
EFT32313	07/11/2013	LGIS PROPERTY	LGIS PROPERTY INSURANCE - 30/06/13 - 30/06/14	102,626.85
EFT32314	07/11/2013	TRILOGY SERVICING PTY LTD	AIR-CONDITIONING MAINTENANCE / REPAIRS FOR VARIOUS LOCATIONS	7,619.41
EFT32315	07/11/2013	TRACEY STEWART	HALL AND KEY BOND REFUND	1,050.00
EFT32316	07/11/2013	QUICK CORPORATE AUST PTY LTD	STATIONERY & OFFICE SUPPLIES	404.18
EFT32317	07/11/2013	KANYANA WILDLIFE REHABILITATION CENTRE INC	PAYMENT TO CONSIGNMENT SUPPLIER FOR GOODS SOLD AT THE ZIG ZAG CULTURAL CENTRE 01/10/13 - 31/10/13	155.60
EFT32318	07/11/2013	RED DIRT ARTS	PAYMENT TO CONSIGNMENT SUPPLIER FOR GOODS SOLD AT THE ZIG ZAG CULTURAL CENTRE 01/10/13 - 31/10/13	34.94
EFT32319	07/11/2013	BIG W (AR W1.C3.U.07)	SUPPLIES FOR HARTFIELD PARK RECREATION CENTRE	111.70

Shire of Kalamunda
Creditors' Payments for the period 6 November to 20 November 2013

Chq/EFT	Date	Name	Description	Amount
EFT32320	07/11/2013	DUN & BRADSTREET (AUSTRALIA) PTY LTD	DEBT COLLECTION FEES FOR RATES AND DEBTORS	691.90
EFT32321	07/11/2013	OPUS INTERNATIONAL CONSULTANTS (PCA) LIMITED	PROVIDE ROAD SAFETY AUDIT OF CANNING ROAD BETWEEN SHIRE BOUNDARY - LESMURDIE ROAD	12,045.00
EFT32322	07/11/2013	PICKERING BROOK HERITAGE GROUP	PAYMENT TO CONSIGNMENT SUPPLIER FOR GOODS SOLD AT THE ZIG ZAG CULTURAL CENTRE 01/10/13 - 31/10/13	43.75
EFT32323	07/11/2013	CONFECT - EXPRESS	KIOSK SUPPLIES FOR HARTFIELD RECREATION CENTRE	227.29
EFT32324	07/11/2013	BRUCE & KYLEE SHERWOOD	RATES REFUND	953.35
EFT32325	07/11/2013	GEMMILL HOMES	FOOTPATH DEPOSIT REFUNDS	2,104.50
EFT32326	07/11/2013	UMIT GUNGOR	CROSSOVER CONTRIBUTION	385.00
EFT32327	07/11/2013	COLES SUPERMARKETS (5016131)	HALL BOND REFUND	400.00
EFT32328	07/11/2013	BLUEPRINT HOMES	FOOTPATH DEPOSIT REFUND	1,000.00
EFT32329	07/11/2013	WOOLWORTHS LIMITED	GROCERY SUPPLIES	331.96
EFT32330	07/11/2013	AFFORDABLE LIVING HOMES	FOOTPATH DEPOSIT REFUNDS	2,200.00
EFT32331	07/11/2013	FORRESTFIELD TENNIS CLUB (INC)	FORRESTFIELD TENNIS CLUB HIRE FEES FROM HARTFIELD PARK RECREATION CENTRE 01 OCTOBER 2013 - 30 OCTOBER 2013	120.00
EFT32332	07/11/2013	HUGHES BUILDERS PTY LTD	FOOTPATH DEPOSIT REFUND	1,000.00
EFT32333	07/11/2013	G.D.CHARLTON	PODIATRY SERVICES AT JACK HEALEY CENTRE	1,573.94
EFT32334	07/11/2013	SECURE TRAFFIC	TRAFFIC MANAGEMENT FOR VARIOUS LOCATIONS	5,676.00
EFT32335	07/11/2013	ANDREW BROAD	FOOTPATH DEPOSIT REFUND	1,000.00
EFT32336	07/11/2013	NATALIE WARBURTON - ANATOMY DESIGNS	PAYMENT TO CONSIGNMENT SUPPLIER FOR GOODS SOLD AT THE ZIG ZAG CULTURAL CENTRE 01/10/13 - 31/10/13	4.90
EFT32337	07/11/2013	THE CHAIR DOCTOR WA PTY LTD	SUPPLY OF OFFICE CHAIRS FOR VARIOUS LOCATIONS	2,502.50

Shire of Kalamunda
Creditors' Payments for the period 6 November to 20 November 2013

Chq/EFT	Date	Name	Description	Amount
EFT32338	07/11/2013	AGED & COMMUNITY SERVICES WA INC	REGISTRATION FOR 4 STAFF TO ATTEND - CDC BUDGETING SKILLS	1,760.00
EFT32339	07/11/2013	AUSTRALIAN SUPERANNUATION	SUPERANNUATION CONTRIBUTIONS	1,282.89
EFT32340	07/11/2013	MARY & NOEL HOFFMAN	PAYMENT TO CONSIGNMENT SUPPLIER FOR GOODS SOLD AT THE ZIG ZAG CULTURAL CENTRE 01/10/13 - 31/10/13	41.97
EFT32341	07/11/2013	MADE 4 YOU (LYGIA)	PAYMENT TO CONSIGNMENT SUPPLIER FOR GOODS SOLD AT THE ZIG ZAG CULTURAL CENTRE 01/10/13 - 31/10/13	112.00
EFT32342	07/11/2013	WARDEN CONSTRUCTION (WA) PTY LTD	FOOTPATH DEPOSIT REFUND	1,000.00
EFT32343	07/11/2013	REDINK HOMES PTY LTD	FOOTPATH DEPOSIT REFUND	1,000.00
EFT32344	07/11/2013	WILLIAM GREENSHIELDS	CROSSOVER CONTRIBUTION	107.50
EFT32345	07/11/2013	NYREE WHARTON	TRAVEL COMMUNITY VISITORS SCHEME REFUND	30.00
EFT32346	07/11/2013	SHIRLEY SPENCER	PAYMENT TO CONSIGNMENT SUPPLIER FOR GOODS SOLD AT THE ZIG ZAG CULTURAL CENTRE 01/10/13 - 31/10/13	68.60
EFT32347	07/11/2013	MAJESTIQUE SCHOOL OF DANCE	HALL AND KEY BOND REFUND	350.00
EFT32348	07/11/2013	ROSE SMART	MAINTAIN ROSE BEDS AT VARIOUS LOCATIONS	1,484.45
EFT32349	07/11/2013	PETER TUCATS SUPERANNUATION FUND	SUPERANNUATION CONTRIBUTIONS	250.70
EFT32350	07/11/2013	BINDALE SUPERANNUATION FUND	SUPERANNUATION CONTRIBUTIONS	76.53
EFT32351	07/11/2013	EZE CONSTRUCTIONS	FOOTPATH DEPOSIT REFUND	1,000.00
EFT32352	07/11/2013	PAUL NAYLER	CROSSOVER CONTRIBUTION	385.00
EFT32353	07/11/2013	BRIKMAKERS	SUPPLY OF LIMESTONE BLOCKS	5,498.24
EFT32354	07/11/2013	LIBERTY OIL WESTERN AUSTRALIA PTY LTD	SUPPLY OF FUEL	27,921.49
EFT32355	07/11/2013	VISWAJITH BALAGURU	HALL AND KEY BOND REFUND	350.00
EFT32356	07/11/2013	PH CONCRETE (WA) PTY LTD	FOOTPATH MAINTENANCE / REPAIRS FOR VARIOUS LOCATIONS	68,365.82

Shire of Kalamunda
Creditors' Payments for the period 6 November to 20 November 2013

Chq/EFT	Date	Name	Description	Amount
EFT32357	07/11/2013	BRADLEY ROBERTS	CROSSOVER CONTRIBUTION	385.00
EFT32358	07/11/2013	JORGE'S CONTRACTING SERVICES	CLEANING SERVICES AT PETER ANDERTON CENTRE	2,412.85
EFT32359	07/11/2013	FONZ'S BOBCAT & TRUCK HIRE	PLANT EQUIPMENT AND OPERATOR HIRE FOR VARIOUS LOCATIONS	6,786.11
EFT32360	07/11/2013	NANCY GILLESPIE	PAYMENT TO CONSIGNMENT SUPPLIER FOR GOODS SOLD AT THE ZIG ZAG CULTURAL CENTRE 01/10/13 - 31/10/13	28.00
EFT32361	07/11/2013	BEAVER TREE SERVICES	TREE REMOVAL / PRUNING FOR VARIOUS LOCATIONS	73,296.30
EFT32362	07/11/2013	VISION SUPER PTY LTD	SUPERANNUATION CONTRIBUTIONS	758.46
EFT32363	07/11/2013	WEST-SURE GROUP	CASH IN TRANSIT SERVICES - OCTOBER 2013	2,574.00
EFT32364	07/11/2013	PATRICIA MOSS	PAYMENT TO CONSIGNMENT SUPPLIER FOR GOODS SOLD AT THE ZIG ZAG CULTURAL CENTRE 01/10/13 - 31/10/13	23.10
EFT32365	07/11/2013	KIELLEY EDWARDS	ARTWORK SOLD - SPRING IN THE HILLS EXHIBITION	80.50
EFT32366	07/11/2013	ST BARNABAS ANGLICAN CHURCH - KALAMUNDA	RATES REFUND	642.86
EFT32367	07/11/2013	SIMSAI CONSTRUCTION GROUP PTY LTD	FOOTPATH DEPOSIT REFUND	1,000.00
EFT32368	07/11/2013	FIRE 4 HIRE	VERGE / RESERVE MAINTENANCE AT VARIOUS LOCATIONS	4,696.00
EFT32369	07/11/2013	JENNIFER DE YOUNG	VOLUNTEER TRANSPORT REIMBURSEMENT REFUND	404.60
EFT32370	07/11/2013	ANGELA CANCI	PODIATRY SERVICES AT JACK HEALEY SERVICES	321.53
EFT32371	07/11/2013	UNIQUE WASTE MANAGEMENT SERVICES	HIRE OF TRUCK AND OPERATOR TO TRANSPORT	15,727.25
EFT32372	07/11/2013	BETA SOUVENIRS	SUPPLY OF VARIOUS MERCHANDISE FOR ZIG ZAG CULTURAL CENTRE	1,061.78
EFT32373	07/11/2013	STRATEGEN ENVIRONMENTAL CONSULTANTS	WATER MONITORING AT MOIRA AVENUE	669.08
EFT32374	07/11/2013	CLAIRE O'NEILL - CLAIRE'S EMBROIDERY	PAYMENT TO CONSIGNMENT SUPPLIER FOR GOODS SOLD AT THE ZIG ZAG CULTURAL CENTRE 01/10/13 -	165.20

Shire of Kalamunda
Creditors' Payments for the period 6 November to 20 November 2013

Chq/EFT	Date	Name	Description	Amount
			31/10/13	
EFT32375	07/11/2013	LINDA STONES	PAYMENT TO CONSIGNMENT SUPPLIER FOR GOODS SOLD AT THE ZIG ZAG CULTURAL CENTRE 01/10/13 - 31/10/13	106.05
EFT32376	07/11/2013	IAN MOSS	PAYMENT TO CONSIGNMENT SUPPLIER FOR GOODS SOLD AT THE ZIG ZAG CULTURAL CENTRE 01/10/13 - 31/10/13	168.00
EFT32377	07/11/2013	WILD EYED PRESS	VARIOUS MERCHANDISE FOR RESALE AT ZIG ZAG CULTURAL CENTRE	953.98
EFT32378	07/11/2013	AROUNDABOUT GARDENING SERVICES	VERGE / GARDEN MAINTENANCE FOR VARIOUS LOCATIONS	3,514.50
EFT32379	07/11/2013	KRISTY LEE MOLLIKA	MC DUTIES FOR SENIOR FAYRE 2013 AT WOODLUPINE COMMUNITY CENTRE	400.00
EFT32380	07/11/2013	PETER FALCONER	PAYMENT TO CONSIGNMENT SUPPLIER FOR GOODS SOLD AT THE ZIG ZAG CULTURAL CENTRE 01/10/13 - 31/10/13	134.40
EFT32381	07/11/2013	HARPREET KAUR SAINI	FOOTPATH DEPOSIT REFUND	1,000.00
EFT32382	07/11/2013	RISK MANAGEMENT TECHNOLOGIES PTY LTD	ANNUAL SUBSCRIPTION FOR CHEMALERT - 22/12/13 - 22/12/14	5,044.60
EFT32383	07/11/2013	MARY FORWARD	PAYMENT TO CONSIGNMENT SUPPLIER FOR GOODS SOLD AT THE ZIG ZAG CULTURAL CENTRE 01/10/13 - 31/10/13	20.65
EFT32384	07/11/2013	FOXTEL	MONTHLY SUBSCRIPTION	200.00
EFT32385	07/11/2013	MICHELLE REED	HALL AND KEY BOND REFUND	350.00
EFT32386	07/11/2013	HANDS-ON INFECTION CONTROL	SUPPLY OF HEPATITIS VACCINATIONS FOR VARIOUS STAFF	379.00

**Shire of Kalamunda
 Creditors' Payments for the period 6 November to 20 November 2013**

Chq/EFT	Date	Name	Description	Amount
EFT32387	07/11/2013	JIM BAKER	PAYMENT TO CONSIGNMENT SUPPLIER FOR GOODS SOLD AT THE ZIG ZAG CULTURAL CENTRE 01/10/13 - 31/10/13	70.00
EFT32388	07/11/2013	KIERAN INGRAM	PAYMENT TO CONSIGNMENT SUPPLIER FOR GOODS SOLD AT THE ZIG ZAG CULTURAL CENTRE 01/10/13 - 31/10/13	52.50
EFT32389	07/11/2013	THE ARTFUL FLOWE - FELICIA LOWE	PAYMENT TO CONSIGNMENT SUPPLIER FOR GOODS SOLD AT THE ZIG ZAG CULTURAL CENTRE 01/10/13 - 31/10/13	26.95
EFT32390	07/11/2013	WYCHERLY PTY LTD	FOOTPATH DEPOSIT REFUND	1,000.00
EFT32391	07/11/2013	DAVID GREEN	PAYMENT TO CONSIGNMENT SUPPLIER FOR GOODS SOLD AT THE ZIG ZAG CULTURAL CENTRE 01/10/13 - 31/10/13	27.94
EFT32392	07/11/2013	JB HI-FI COMMERCIAL	ELECTRICAL SUPPLIES	955.00
EFT32393	07/11/2013	KENNETH W BURNS	CROSSOVER CONTRIBUTION	385.00
EFT32394	07/11/2013	GILLIAN LILLEYMAN	PAYMENT TO CONSIGNMENT SUPPLIER FOR GOODS SOLD AT THE ZIG ZAG CULTURAL CENTRE 01/10/13 - 31/10/13	69.30
EFT32395	07/11/2013	MPJ (WA) PTY LTD	SUPERANNUATION CONTRIBUTIONS	442.52
EFT32396	07/11/2013	BEATON FIREARMS	KEY BOND REFUND	50.00
EFT32397	07/11/2013	KISS CAFE WELSHPOOL	STAFF CATERING FOR WALK THE ZIG ZAG 2013	103.50
EFT32398	07/11/2013	MAX OGRADY - PROJECT PHOTOGRAPHY	PAYMENT TO CONSIGNMENT SUPPLIER FOR GOODS SOLD AT THE ZIG ZAG CULTURAL CENTRE 01/10/13 - 31/10/13	21.00
EFT32399	07/11/2013	LOUISA ILES	WEEKLY CLASSES - GROUP FITNESS INSTRUCTOR - HEALTHY LIFE CHALLENGE	181.72
EFT32400	07/11/2013	DMC CLEANING	CLEANING OF VARIOUS SHIRE BUILDINGS	47,316.90

**Shire of Kalamunda
 Creditors' Payments for the period 6 November to 20 November 2013**

Chq/EFT	Date	Name	Description	Amount
EFT32401	07/11/2013	NICHOLAS TAYLOR	PAYMENT TO CONSIGNMENT SUPPLIER FOR GOODS SOLD AT THE ZIG ZAG CULTURAL CENTRE 01/10/13 - 31/10/13	52.50
EFT32402	07/11/2013	SILK ON SILK (ROSEMARY LONSDALE)	PAYMENT TO CONSIGNMENT SUPPLIER FOR GOODS SOLD AT THE ZIG ZAG CULTURAL CENTRE 01/10/13 - 31/10/13	322.00
EFT32403	07/11/2013	S & J DEVELOPMENTS P/L T/AS LANSDOWN CONSTRUCTION	PART PAYMENT FOR FOR THE CONSTRUCTION OF THE NORM SADLER VIEWING PLATFORM	26,439.60
EFT32404	07/11/2013	CUROST MILK SUPPLY	MILK SUPPLY FOR ADMINISTRATION BUILDING AND DEPOT	234.30
EFT32405	07/11/2013	KJERSTIN BJELLAND	MONTHLY RENTAL OF LOTS 918 AND 919 MONARCH WAY WATTLE GROVE	3,169.67
EFT32406	07/11/2013	MAVIS PASKULICH	PAYMENT TO CONSIGNMENT SUPPLIER FOR GOODS SOLD AT THE ZIG ZAG CULTURAL CENTRE 01/10/13 - 31/10/13	187.60
EFT32407	07/11/2013	SMART URBAN PTY LTD	SUPPLY OF 50 SMART TAPER UNITS	1,562.00
EFT32408	07/11/2013	DEMENTIA CARE AUSTRALIA	BOND REFUND FOR THE USE OF THE SEMINAR ROOM AT THE ZIG ZAG CULTURAL CENTRE	300.00
EFT32409	07/11/2013	BEESWAX CREATIONS	PAYMENT TO CONSIGNMENT SUPPLIER FOR GOODS SOLD AT THE ZIG ZAG CULTURAL CENTRE 01/10/13 - 31/10/13	16.04
EFT32410	07/11/2013	SHIRLEY MILBURN	SALE OF ARTWORK - SPRING IN THE HILLS EXHIBITION	518.00
EFT32411	07/11/2013	GERARD THOMAS	REFUND OF EMPLOYMENT CONTRACT ALLOWANCE	60.00
EFT32412	07/11/2013	WYATT SC HOBBS	FOOTPATH DEPOSIT REFUND	1,200.00
EFT32413	07/11/2013	TIERRA ECOLOGIA	PAYMENT TO CONSIGNMENT SUPPLIER FOR GOODS SOLD AT THE ZIG ZAG CULTURAL CENTRE 01/10/13 - 31/10/13	276.50

Shire of Kalamunda
Creditors' Payments for the period 6 November to 20 November 2013

Chq/EFT	Date	Name	Description	Amount
EFT32414	07/11/2013	MPK TREE SERVICES	TREE REMOVAL / BRANCH PRUNING AT VARIOUS LOCATIONS	1,100.00
EFT32415	07/11/2013	PRICEWATERHOUSECOOPERS	PROFESSIONAL GST SERVICES - SALTBUSH ESTATE	11,000.00
EFT32416	07/11/2013	A1 TROJAN PEST CONTROL	PEST CONTROL SERVICES FOR VARIOUS LOCATIONS	1,006.50
EFT32417	07/11/2013	WHERE THE ART THINGS ARE	ART ACTIVITY - WALK THE ZIG ZAG 2013	1,000.00
EFT32418	07/11/2013	VISSYART	PAYMENT TO CONSIGNMENT SUPPLIER FOR GOODS SOLD AT THE ZIG ZAG CULTURAL CENTRE 01/10/13 - 31/10/13	7.28
EFT32419	07/11/2013	SWAN BALLROOM	HALL AND KEY BOND REFUND	350.00
EFT32420	07/11/2013	IRRIGATION WA PTY LTD	IRRIGATION MAINTENANCE AT TYLER SPRINGS ESTATE	198.00
EFT32421	07/11/2013	OFF PEN PUBLISHING - BETH BAKER	PAYMENT TO CONSIGNMENT SUPPLIER FOR GOODS SOLD AT THE ZIG ZAG CULTURAL CENTRE 01/10/13 - 31/10/13	74.90
EFT32422	07/11/2013	STAN THE TYRE MAN (STAN'S TYRE SERVICE WA)	PLANT / VEHICLE PARTS	811.80
EFT32423	07/11/2013	CHRIS KERSHAW PHOTOGRAPHY	ANNUAL REPORT PHOTOGRAPHY	1,375.00
EFT32424	07/11/2013	WOBBLYJULES INVESTMENTS FUND	SUPERANNUATION CONTRIBUTIONS	203.68
EFT32425	07/11/2013	QPM QUALITY PROJECT MANAGEMENT	REFUND OF BUILDING SERVICE LEVY	5.00
EFT32426	07/11/2013	GRAHAM STIMSON	PAYMENT TO CONSIGNMENT SUPPLIER FOR GOODS SOLD AT THE ZIG ZAG CULTURAL CENTRE 01/10/13 - 31/10/13	164.50
EFT32427	07/11/2013	BALLIGART - HELEN LOCK	PAYMENT TO CONSIGNMENT SUPPLIER FOR GOODS SOLD AT THE ZIG ZAG CULTURAL CENTRE 01/10/13 - 31/10/13	35.35
EFT32428	07/11/2013	FLEETCARE PTY LTD	STAFF CONTRIBUTIONS TO NOVATED LEASING	1,446.04
EFT32429	07/11/2013	PROFESSIONAL SEARCH GROUP PTY LTD	PERMANENT CONVERSION FEE FOR HIRING OF STAFF MEMBER	5,500.00

**Shire of Kalamunda
 Creditors' Payments for the period 6 November to 20 November 2013**

Chq/EFT	Date	Name	Description	Amount
EFT32430	07/11/2013	IMAGININGS LIFE IMAGES BY SUE	PAYMENT TO CONSIGNMENT SUPPLIER FOR GOODS SOLD AT THE ZIG ZAG CULTURAL CENTRE 01/10/13 - 31/10/13	25.20
EFT32431	07/11/2013	AUSTRALIAN CATHOLIC SUPERANNUATION & RETIREMENT FUND (ACSRF)	SUPERANNUATION CONTRIBUTIONS	234.60
EFT32432	07/11/2013	MICHELLE JOYCE	SALE OF ARTWORK - SPRING IN THE HILLS EXHIBITION	346.50
EFT32433	07/11/2013	LORI SHARKEY	SALE OF ARTWORK - SPRING IN THE HILLS EXHIBITION	101.50
EFT32434	07/11/2013	STEPHEN WILLIAMS	SALE OF ARTWORK - SPRING IN THE HILLS EXHIBITION	350.00
EFT32435	07/11/2013	JANETTE WOODLAND	VOLUNTEER TRAVEL REIMBURSEMENT - OCT 2013	30.00
EFT32436	07/11/2013	LUCYNA BARBARA MANDYCZEWSKY	SALE OF ARTWORK - SPRING IN THE HILLS EXHIBITION	42.00
EFT32437	07/11/2013	NICOLE FENWICK PHOTOGRAPHY	SALE OF ARTWORK - SPRING IN THE HILLS EXHIBITION	210.00
EFT32438	07/11/2013	GREG ROSS	HALL AND KEY BOND REFUND, LESS MONIES OWED ON HALL HIRE	145.00
EFT32439	07/11/2013	LILIAN & SIEGFRIED KRAMER	RATES REFUND	1,631.74
EFT32440	07/11/2013	ANDREA & STEPHEN JONES	RATES REFUND	835.45
EFT32441	07/11/2013	AMY MORRIS	SALE OF ARTWORK - SPRING IN THE HILLS EXHIBITION	98.00
EFT32442	07/11/2013	TREND NOMINEES	TRAM TRANSPORT - WALK THE ZIG ZAG 2013	790.00
EFT32443	07/11/2013	DON & JODI ELLIOTT	CROSSOVER CONTRIBUTION	385.00
EFT32444	07/11/2013	FRIENDSHIP FORCE OF PERTH	HALL AND KEY BOND REFUND	350.00
EFT32445	07/11/2013	NORDIC ACADEMY	KEY BOND REFUND	50.00
EFT32446	07/11/2013	GIRL GUIDES ASSOCIATION OF WA	KEY BOND REFUND	50.00

Shire of Kalamunda
Creditors' Payments for the period 6 November to 20 November 2013

Chq/EFT	Date	Name	Description	Amount
EFT32447	07/11/2013	KALAMUNDA PERFORMERS - FUNDRAISING ACCOUNT	HALL AND KEY BOND REFUND	750.00
EFT32448	14/11/2013	KALAMUNDA CHAMBER OF COMMERCE INC	ANNUAL MEMBERSHIP RENEWAL, SPONSORSHIP & BUSINESS AWARDS ATTENDANCE	2,205.00
EFT32449	21/11/2013	CAPITAL RECYCLING / DEMOLITION	SUPPLY AND DELIVERY OF RECYCLED SAND TO VARIOUS LOCATIONS	530.34
EFT32450	21/11/2013	WOOLWORTHS LIMITED	GROCERY SUPPLIES FOR HARTFIELD PARK RECREATION CENTRE	189.89
EFT32451	21/11/2013	STYLECORP CORPORATE WEAR	SUPPLY OF UNIFORM FOR VARIOUS STAFF MEMBERS	1,379.36
EFT32452	21/11/2013	MOTORCHARGE - WRIGHT EXPRESS FUEL CARDS AUSTRALIA LTD	FUEL - PERIOD ENDING 15/11/13	7,661.66
EFT32453	21/11/2013	PLE COMPUTERS	SUPPLIES OF COMPUTERS AND ACCESSORIES	28,662.76
EFT32454	21/11/2013	SHAWMAC PTY LTD	CONSULTING SERVICES FOR DESIGN PLANS FOR ABERNETHY ROAD DUPLICATION, TRAFFIC STUDY AND INTERSECTION PERFORMANCE MODELLING AT HALE ROAD FORRESTFIELD	28,074.75
EFT32455	21/11/2013	KLEENIT PTY LTD	HIGH PRESSURE CLEAN ASTRO TURF AREAS OF CRICKET NETS AT SCOTT RESERVE	2,310.00
EFT32456	21/11/2013	NEVERFAIL SPRINGWATER LTD (KALA LIB)	BOTTLED WATER SUPPLIES / MAINTENANCE	58.75
EFT32457	21/11/2013	NESTLE AUSTRALIA LTD (MUSASHI)	KIOSK SUPPLIES FOR HARTFIELD PARK	490.05
EFT32458	21/11/2013	WILSONS SIGN SOLUTIONS	SIGNAGE SUPPLIES	1,232.00
EFT32459	21/11/2013	KALAMUNDA GLASS & WINDSCREENS ON WHEELS	GLASS REPAIRS / MAINTENANCE FOR VARIOUS LOCATIONS	362.45
EFT32460	21/11/2013	FIRE AND SAFETY WA	FIRE PROTECTION WEAR / SUPPLIES	2,166.78
EFT32461	21/11/2013	KONICA MINOLTA BUSINESS SOLUTIONS P/L	PHOTOCOPYING CHARGES / MAINTENANCE FEES	944.31

Shire of Kalamunda
Creditors' Payments for the period 6 November to 20 November 2013

Chq/EFT	Date	Name	Description	Amount
EFT32462	21/11/2013	EXPERIENCE PERTH	2013/2014 GOLD MEMBERSHIP WITH PERTH REGION TOURISM ORGANISATION	310.00
EFT32463	21/11/2013	COUNTRYWIDE PUBLICATIONS	1/2 PAGE MONTHLY ADVERT FOR ZZCC FOR YOUR GUIDE TO PERTH AND FREMANTLE	500.00
EFT32464	21/11/2013	MARK ROBERT READINGS	MC DUTIES QUIT TARGA WEST RALLY 2013	700.00
EFT32465	21/11/2013	CABCHARGE AUSTRALIA LIMITED	CABCHARGE FEES	6.00
EFT32466	21/11/2013	GREENLINE AG PTY LTD	PLANT / VEHICLE PARTS	330.22
EFT32467	21/11/2013	PICTON PRESS	PRINTING OF BROCHURES FOR VARIOUS EVENTS	836.14
EFT32468	21/11/2013	SHERICH BUILDING SURVEYING & BUILDING SERVICES	BUILDING SERVICES - RELOCATION OF MUSTER ROOM, RAYMOND ROAD WALLISTON AND ISSUING A CERTIFICATE OF DESIGN COMPLIANCE FOR ZIG ZAG CULTURAL CENTRE	1,815.00
EFT32469	21/11/2013	THE PLANNING GROUP WA PTY LTD	PROFESSIONAL SERVICES FOR FORRESTFIELD STAGE 3 LIA MRS AMENDMENT 2013 AND PICKERING BROOK	2,948.00
EFT32470	21/11/2013	TOP OF THE LADDER GUTTER CLEANING	GUTTER CLEANING SERVICES FOR VARIOUS LOCATIONS	2,651.00
EFT32471	21/11/2013	VIP CARPET AND UPHOLSTERY CLEANING SERVICE	CARPET CLEANING AT VARIOUS LOCATIONS	980.00
EFT32472	21/11/2013	TRAFFIC CALMING AUSTRALIA	SUPPLY AND INSTALL 2 RUBBER TRAFFIC ISLANDS	11,357.50
EFT32473	21/11/2013	CLEVERPATCH PTY LTD	ARTS AND CRAFTS SUPPLIES	643.37
EFT32474	21/11/2013	BARBECUE BAZAAR (MIDLAND)	SUPPLY OF BBQ ACCESSORIES	250.00
EFT32475	21/11/2013	BIDVEST FOODSERVICE	GROCERIES FOR PETER ANDERTON CENTRE	959.04
EFT32476	21/11/2013	TOTALLY WORKWEAR MIDLAND	SUPPLY OF PROTECTIVE CLOTHING	807.97
EFT32477	21/11/2013	CARMEL ADVENTIST COLLEGE	BOND REFUND FOR THE USE OF THE SEMINAR ROOM AT THE ZIG ZAG CULTURAL CENTRE	200.00
EFT32478	21/11/2013	PAUL MCGUIRE	PART REFUND OF GYM MEMBERSHIP	144.00

Shire of Kalamunda
Creditors' Payments for the period 6 November to 20 November 2013

Chq/EFT	Date	Name	Description	Amount
EFT32479	21/11/2013	MATTHEW WARD	SPORTS STAR AWARDS PROGRAM - ROUND ONE NOVEMBER 2013	250.00
EFT32480	21/11/2013	BLAISE DANIEL MEYLAN	PART DOG REGISTRATION REFUND	6.00
EFT32481	21/11/2013	LEONIE ELIZABETH VEITCH	HALL AND KEY BOND REFUND	1,050.00
EFT32482	21/11/2013	BRIAN PHILLIPS	PART DOG REGISTRATION REFUND	12.00
EFT32483	21/11/2013	BARBARA PAYNE	PART DOG REGISTRATION REFUND	6.00
EFT32484	21/11/2013	GLENDA MAY BUNTER	PART DOG REGISTRATION REFUND	63.00
EFT32485	21/11/2013	WA LOCAL GOVERNMENT SUPERANNUATION PLAN	SUPERANNUATION CONTRIBUTIONS	87,622.06
EFT32486	21/11/2013	SHIRE OF KALAMUNDA STAFF SOCIAL CLUB	PAYROLL DEDUCTIONS	264.00
EFT32487	21/11/2013	CHILD SUPPORT AGENCY	PAYROLL DEDUCTIONS	671.72
EFT32488	21/11/2013	BUNNINGS BUILDING SUPPLIES	HARDWARE SUPPLIES FOR VARIOUS LOCATIONS	1,443.03
EFT32489	21/11/2013	COVS PARTS PTY LTD	PLANT / VEHICLE PARTS	1,967.27
EFT32490	21/11/2013	CROMMELINS MACHINERY	PLANT / VEHICLE PARTS	1,746.11
EFT32491	21/11/2013	LANDGATE	LAND ENQUIRIES	96.00
EFT32492	21/11/2013	GULLY VIEWS NEWSAGENCY	SUBSCRIPTIONS & NEWSPAPERS FOR VARIOUS LOCATIONS	109.30
EFT32493	21/11/2013	KALAMUNDA AUTO ELECTRICS	PLANT / VEHICLE PARTS	1,150.80
EFT32494	21/11/2013	KALAMUNDA TOYOTA	PLANT / VEHICLE PARTS	378.18
EFT32495	21/11/2013	MCLEODS BARRISTERS & SOLICITORS	LEGAL EXPENSES	338.28
EFT32496	21/11/2013	BORAL BRICKS WA PTY LTD	SUPPLY OF PAVING BRICKS	930.95
EFT32497	21/11/2013	SESCO SECURITY CO	SECURITY MONITORING SERVICES FOR VARIOUS LOCATIONS	5,254.30
EFT32498	21/11/2013	LANDGATE - VALUATIONS	VALUATIONS FOR VARIOUS LOCATIONS	544.15
EFT32499	21/11/2013	WALKERS HARDWARE (MITRE 10)	HARDWARE SUPPLIES	406.25
EFT32500	21/11/2013	ECHO NEWSPAPER	ADVERTISING FOR VARIOUS JOBS / EVENTS	2,544.50

**Shire of Kalamunda
 Creditors' Payments for the period 6 November to 20 November 2013**

Chq/EFT	Date	Name	Description	Amount
EFT32501	21/11/2013	MCKAY EARTHMOVING PTY LTD	PLANT EQUIPMENT AND OPERATOR HIRE FOR VARIOUS LOCATIONS	929.28
EFT32502	21/11/2013	BUNZL LTD	KITCHEN / CLEANING SUPPLIES	312.33
EFT32503	21/11/2013	EASTERN METROPOLITAN REGIONAL COUNCIL	DOMESTIC / WASTE CHARGES - RED HILL TIP. BIN HRE FEES. MATTRESS DISPOSAL FEES. GROUND WATER MONITORING AT BRAND AND DAWSON AVENUE 2013/14	218,219.99
EFT32504	21/11/2013	BORAL CONSTRUCTION MATERIALS GROUP	ROAD MATERIALS FOR VARIOUS LOCATIONS	3,408.53
EFT32505	21/11/2013	OCE AUSTRALIA LIMITED	PHOTOCOPYING CHARGES	228.22
EFT32506	21/11/2013	OFFICE LINE	OFFICE FURNITURE SUPPLIES	444.40
EFT32507	21/11/2013	3 VODAFONE HUTCHISON AUSTRALIA PTY LTD	COMMUNICATION EXPENSES	2,390.58
EFT32508	21/11/2013	FASTA COURIERS	COURIER FEES	515.55
EFT32509	21/11/2013	THE WATERSHED WATER SYSTEMS	RETICULATION PARTS FOR VARIOUS RESERVES	5,486.28
EFT32510	21/11/2013	RAECO	STATIONERY / OFFICE SUPPLIES	776.85
EFT32511	21/11/2013	SUNNY INDUSTRIAL BRUSHWARE	PLANT / VEHICLE PARTS	2,922.40
EFT32512	21/11/2013	KINETIC HEALTH GROUP LTD	PREPLACEMENT MEDICALS / BASELINE HEARING TESTS	2,182.40
EFT32513	21/11/2013	SANDGROPER SEPTICS	SEPTIC / GREASE TANK CLEAN OUT SERVICES AT VARIOUS LOCATIONS	368.59
EFT32514	21/11/2013	MAJOR MOTORS PTY LTD	PLANT / VEHICLE PARTS	179.94
EFT32515	21/11/2013	CANON AUSTRALIA PTY LTD	PHOTOCOPYING CHARGES	7.23
EFT32516	21/11/2013	ALSCO LINEN SERVICE	LINEN HIRE / LAUNDRY SERVICES	1,555.53
EFT32517	21/11/2013	DAYNITE TOWING SERVICE (WA) PTY LTD (FORMERLY MOBITOW PTY LTD)	TOWING SERVICES	292.60
EFT32518	21/11/2013	CLEAN CLOTH COTTON TRADERS	PROTECTIVE SUPPLIES	202.79
EFT32519	21/11/2013	LESMURDIE FLORIST AND GIFT CENTRE	SUPPLY OF 25 FLOWER TABLE ARRANGEMENTS SENIORS DANCE 2013	500.00

Shire of Kalamunda
Creditors' Payments for the period 6 November to 20 November 2013

Chq/EFT	Date	Name	Description	Amount
EFT32520	21/11/2013	KALA BOB KATS PTY LTD	PLANT EQUIPMENT AND OPERATOR HIRE FOR VARIOUS LOCATIONS	815.65
EFT32521	21/11/2013	DEPARTMENT OF PARKS & WILDLIFE	KANYANA WILDLIFE HOSPITAL LEASE - 01/11/13 - 31/10/14	193.05
EFT32522	21/11/2013	DEPARTMENT OF PREMIER & CABINET - STATE LAW PUBLISHER	GOVERNMENT GAZETTE ADVERTISING	174.08
EFT32523	21/11/2013	ACTIMED AUSTRALIA PTY LTD	MEDICAL SUPPLIES FOR PODIARTIST	337.53
EFT32524	21/11/2013	STONETRADERS PTY LTD	GARDEN / RESERVE SUPPLIES	1,158.08
EFT32525	21/11/2013	GRONBEK SECURITY	SECURITY KEY SERVICES TO VARIOUS SHIRE BUILDINGS	533.41
EFT32526	21/11/2013	GRIMES CONTRACTING PTY LTD	CONTRACTOR BUILDING MAINTENANCE FOR VARIOUS BUILDINGS	5,083.04
EFT32527	21/11/2013	CONCUT PTY LTD	PLANT EQUIPMENT HIRE	1,736.24
EFT32528	21/11/2013	KENYON & COMPANY PTY LTD	PLANT / VEHICLE PARTS	177.10
EFT32529	21/11/2013	BGC ASPHALT	ROAD MATERIALS FOR VARIOUS LOCATIONS	1,564.77
EFT32530	21/11/2013	WESTBOOKS	LIBRARY SUPPLIES	732.34
EFT32531	21/11/2013	WESTSIDE FIRE SERVICES	TESTING AND INSPECTION OF FIRE EQUIPMENT / SUPPLIES	1,241.90
EFT32532	21/11/2013	STAPLES AUSTRALIA PTY LTD(CORPORATE EXPRESS AUSTRALIA LTD)	STATIONERY / OFFICE SUPPLIES	1,795.22
EFT32533	21/11/2013	KALAMUNDA STATE EMERGENCY SERVICE	REIMBURSEMENT - GOODS AND SERVICES	1,237.83
EFT32534	21/11/2013	HILL TOP TROPHIES (MILPRO WA)	SUPPLY OF NAME BADGES	34.65
EFT32535	21/11/2013	BLADON WA PTY LTD	MEMORABILIA SUPPLIES	224.40
EFT32536	21/11/2013	FULTON HOGAN INDUSTRIES PTY LTD	ROAD MATERIALS FOR VARIOUS LOCATIONS	46,463.21
EFT32537	21/11/2013	FOODWORKS FRESH FORRESTFIELD	GROCERY SUPPLIES	1,209.89

Shire of Kalamunda
Creditors' Payments for the period 6 November to 20 November 2013

Chq/EFT	Date	Name	Description	Amount
EFT32538	21/11/2013	WA LOCAL GOVERNMENT ASSOCIATION (ADVERTISING)	ADVERTISING FOR VARIOUS JOBS / EVENTS	6,954.50
EFT32539	21/11/2013	IT VISION	SYNERGYSOFT DATABASE - ADDITIONAL SERVER EDITION LICENCES - 10. DIY PROGRAM FOR ATO REPORTING.	12,865.38
EFT32540	21/11/2013	LESMURDIE SENIOR HIGH SCHOOL	LOST AND DAMAGED BOOKS	300.82
EFT32541	21/11/2013	MACDONALD JOHNSTON ENGINEERING	PLANT / VEHICLE PARTS	358.48
EFT32542	21/11/2013	LO-GO APPOINTMENTS	HIRE OF TEMPORARY STAFF FOR DEPOT / ADMIN	9,574.58
EFT32543	21/11/2013	STAFFLINK INDUSTRIAL	HIRE OF TEMPORARY STAFF FOR DEPOT / ADMIN	8,004.90
EFT32544	21/11/2013	BRIDGESTONE AUSTRALIA LTD	PLANT / VEHICLE PARTS	3,200.05
EFT32545	21/11/2013	WORK CLOBBER (MIDLAND)	PROTECTIVE CLOTHING SUPPLIES	183.00
EFT32546	21/11/2013	FLEXI STAFF PTY.LTD.	HIRE OF TEMPORARY STAFF FOR DEPOT / ADMIN	3,535.18
EFT32547	21/11/2013	HOMESTART	FOOTPATH DEPOSIT REFUNDS	2,000.00
EFT32548	21/11/2013	J BLACKWOOD & SON LIMITED	PROTECTIVE WEAR / SUPPLIES	3,658.26
EFT32549	21/11/2013	EASTERN HILLS SAWS AND MOWERS	PLANT / VEHICLE PARTS	6,259.20
EFT32550	21/11/2013	LOVEGROVE TURF SERVICES	TURF MAINTENANCE / SERVICES AT VARIOUS LOCATIONS	8,831.70
EFT32551	21/11/2013	REPCO BRAKE & CLUTCH	PLANT / VEHICLE PARTS	346.03
EFT32552	21/11/2013	DELOITTE TOUCHE TOHMATSU	PROFESSIONAL SERVICES	15,250.95
EFT32553	21/11/2013	CRABBS KALAMUNDA (IGA)	GROCERY SUPPLIES	1,002.57
EFT32554	21/11/2013	KALAMUNDA MUSIC SOCIETY	HALL AND KEY BOND REFUND	450.00
EFT32555	21/11/2013	VENTURA HOMES PTY LTD	FOOTPATH DEPOSIT REFUND	1,200.00
EFT32556	21/11/2013	BIBBULMUN TRACK FOUNDATION	SUPPLY OF WILDFLOWERS OF THE BIBBULMUN TRACK BOOKS FOR CITIZENTSHIP AND BOND REFUND FOR THE USE OF THE SEMINAR ROOM AT THE ZIG ZAG CULTURAL CENTRE	1,425.00
EFT32557	21/11/2013	HILLS BMX CLUB (INC)	KIDSPORT FUNDING FOR VARIOUS PLAYERS	294.00

Shire of Kalamunda
Creditors' Payments for the period 6 November to 20 November 2013

Chq/EFT	Date	Name	Description	Amount
EFT32558	21/11/2013	WATTLE GROVE VETERINARY HOSPITAL	VETERINARY FEES	120.00
EFT32559	21/11/2013	HOMEBUYERS CENTRE	FOOTPATH DEPOSIT REFUNDS	3,000.00
EFT32560	21/11/2013	E & MJ ROSHER PTY LTD	PLANT / VEHICLE PARTS	110.55
EFT32561	21/11/2013	PLUNKETT HOMES	FOOTPATH DEPOSIT REFUND	1,854.50
EFT32562	21/11/2013	WACKER NEUSON AUSTRALIA PTY LTD	PLANT / VEHICLE PARTS	4,050.97
EFT32563	21/11/2013	GCS SERVICES	PLUMBING SERVICES TO VARIOUS SHIRE BUILDINGS	288.75
EFT32564	21/11/2013	LANDMARK OPERATIONS LTD	CHEMICALS & SUPPLIES	1,821.60
EFT32565	21/11/2013	ST JOHN AMBULANCE AUSTRALIA (WA) INC	FIRST AID KIT SERVICING FOR VARIOUS LOCATIONS	2,034.86
EFT32566	21/11/2013	AUSTRALIAN MANUFACTURERS CORP P/T T/A PARK MOTOR BODY BUILDERS	PLANT / VEHICLE PARTS	792.00
EFT32567	21/11/2013	COMMISSIONER OF POLICE	VOLUNTEER POLICE CHECKS	105.20
EFT32568	21/11/2013	HAWLEY'S BOBCAT SERVICE	PLANT EQUIPMENT AND OPERATOR HIRE FOR VARIOUS LOCATIONS	7,424.50
EFT32569	21/11/2013	GARY A ROSS	FOOTPATH DEPOSIT REFUND	700.00
EFT32570	21/11/2013	WILD SEASONS FLOWERS PTY LTD	FLOWER ARRANGEMENTS	175.00
EFT32571	21/11/2013	MIDLAND CEMENT PRODUCTS	PLUMBING SUPPLIES FOR VARIOUS LOCATIONS	13.64
EFT32572	21/11/2013	TOTAL PACKAGING (WA) PTY LTD	SUPPLY OF DOG LITTER BAGS	858.00
EFT32573	21/11/2013	WURTH AUSTRALIA PTY LTD	PLANT / VEHICLE PARTS	384.87
EFT32574	21/11/2013	WA HINO SALES & SERVICE	PLANT / VEHICLE PARTS	416.72
EFT32575	21/11/2013	DIGITAL MAPPING SOLUTIONS	GIS CONSULTING SERVICES - DATA ASSET REVIEW, SUPPORT AND MENTORING	17,908.00
EFT32576	21/11/2013	GHD PTY LTD	PROGRESS PAYMENT - PREPARE DESIGN AND APPROVALS FOR ROUNDABOUT AND NEW ROAD CONSTRUCTION FOR HALE / ARTHUR ROAD	13,358.13
EFT32577	21/11/2013	ICON-SEPTECH	DRAINAGE SUPPLIES FOR VARIOUS LOCATIONS	2,095.28
EFT32578	21/11/2013	DICK SMITH ELECTRONICS	ELECTRICAL SUPPLIES	351.74

Shire of Kalamunda
Creditors' Payments for the period 6 November to 20 November 2013

Chq/EFT	Date	Name	Description	Amount
EFT32579	21/11/2013	IMPRESSIONS THE HOME BUILDER	FOOTPATH DEPOSIT REFUND	2,000.00
EFT32580	21/11/2013	ZEE TAGS LTD	SUPPLY OF SPLIT RINGS FOR DOG TAGS	88.58
EFT32581	21/11/2013	THE FARM SHOP (WA) PTY LTD	GARDEN / RESERVE SUPPLIES	130.99
EFT32582	21/11/2013	KALAMUNDA SENIOR HIGH SCHOOL	REFUND OF BADMINTON COURT HIRE	47.25
EFT32583	21/11/2013	COMMUNICATION SUPPORT UNIT SES	ASSIST WITH PARKING & TRAFFIC CONTROL AT WALK THE ZIG ZAG	500.00
EFT32584	21/11/2013	B & J CATALANO PTY LTD	ROAD MATERIALS FOR VARIOUS LOCATIONS	7,924.34
EFT32585	21/11/2013	HILL TOP GROUP PTY	CONTRACTOR BUILDING MAINTENANCE FOR VARIOUS BUILDINGS	12,114.15
EFT32586	21/11/2013	REGENERATED LANDSCAPES	WEED CONTROL AT VARIOUS LOCATIONS	330.00
EFT32587	21/11/2013	TALONS HIGH SECURITY FENCING	REPAIRS TO DEPOT FENCE	275.00
EFT32588	21/11/2013	JARAM PRODUCTS PTY	PLANT / VEHICLE PARTS	846.32
EFT32589	21/11/2013	ANALYTICAL REFERENCE LABORATORIES	SUPPLY OF LABORATORY TESTING AND RESULTS FOR ASBESTOS CONTAINING MATERIAL SAMPLES FOR VARIOUS LOCATIONS	242.00
EFT32590	21/11/2013	POOL AND SPA MART / STIHL KALAMUNDA	PLANT / VEHICLE PARTS	329.00
EFT32591	21/11/2013	UHY HAINES NORTON	AUDIT SERVICES PROVIDED TO YEAR ENDING 30 JUNE 2013	25,376.30
EFT32592	21/11/2013	MOIRA A COURT	BOND REFUND FOR THE USE OF THE SEMINAR ROOM AT THE ZIG ZAG CULTURAL CENTRE	500.00
EFT32593	21/11/2013	NEW GENERATION HOMES - TANGENT NOMINEES PTY LTD	FOOTPATH DEPOSIT REFUNDS	2,000.00
EFT32594	21/11/2013	TRILOGY SERVICING PTY LTD	AIRCONDITIONING MAINTENANCE / REPAIRS FOR VARIOUS LOCATIONS	410.25
EFT32595	21/11/2013	CELEBRATION HOMES	FOOTPATH DEPOSIT REFUND	1,000.00
EFT32596	21/11/2013	ALTIFORM PTY LTD	SUPPLY OF STREET FURNITURE	10,940.60

Shire of Kalamunda
Creditors' Payments for the period 6 November to 20 November 2013

Chq/EFT	Date	Name	Description	Amount
EFT32597	21/11/2013	QUICK CORPORATE AUST PTY LTD	STATIONERY & OFFICE SUPPLIES	6,063.11
EFT32598	21/11/2013	JESSICA RUSSELL	SPORTS STAR AWARDS PROGRAM - ROUND ONE NOVEMBER 2013	250.00
EFT32599	21/11/2013	COMMUNITY NEWSPAPER GROUP LTD	ADVERTISING FOR VARIOUS JOBS AND EVENTS	3,340.51
EFT32600	21/11/2013	WREN OIL	WASTE OIL RECYCLING - DISPOSAL FEES	18.15
EFT32601	21/11/2013	PERRY ENVIRONMENTAL CONTRACTING	WEED CONTROL AT VARIOUS LOCATIONS	8,503.00
EFT32602	21/11/2013	HILTI (AUST.) PTY LTD	PLANT / VEHICLE PARTS	2,430.81
EFT32603	21/11/2013	BIG W (AR W1.C3.U.07)	BOOKS, CDS , DVDS SUPPLIES FOR VARIOUS LIBRARIES	308.00
EFT32604	21/11/2013	DEPARTMENT OF TRANSPORT	VEHICLE SEARCH FEES	28.80
EFT32605	21/11/2013	PRIME CORPORATE PSYCHOLOGY SERVICES P/L	EMPLOYEE ASSISTANCE PROGRAMME	511.50
EFT32606	21/11/2013	PACIFIC BIOLOGICS PTY LTD	MOSQUITO CONTROL	11,449.20
EFT32607	21/11/2013	BT EQUIPMENT P/L T/A TUTT BRYANT EQUIPMENT	PLANT/VEHICLE PARTS	419.43
EFT32608	21/11/2013	BOC LIMITED	GAS BOTTLES	44.94
EFT32609	21/11/2013	TOTAL COOLANT MANAGEMENT SOLUTIONS (AUSTRALIA)	PLANT/VEHICLE PARTS	1,180.01
EFT32610	21/11/2013	ARTSOURCE	ZIG ZAG GALLERY ADVERTISING	250.00
EFT32611	21/11/2013	MILUC PROPERTY DEVELOPMENT	RETURN OF DEFECTS LIABILITY BOND - WAPC 142710 - LOT 527 & 528 BERKSHIRE RD F/FIELD - STAGE 1	46,444.44
EFT32612	21/11/2013	FOOD TECHNOLOGY SERVICES PTY LTD	HIRE OF TEMPORARY STAFF FOR HEALTH DEPARTMENT	2,710.13
EFT32613	21/11/2013	OPUS INTERNATIONAL CONSULTANTS (PCA) LIMITED	PROFESSIONAL SERVICES FOR CONSTRUCTION ENGINEER TO MEET WATER CORP DEV MANUAL REQUIREMENTS	3,029.29
EFT32614	21/11/2013	COMMSTRAT T/A HALLMARK EDITIONS PTY LTD	SUBSCRIPTION TO LOCAL GOVERNMENT NEWS	510.00

Shire of Kalamunda
Creditors' Payments for the period 6 November to 20 November 2013

Chq/EFT	Date	Name	Description	Amount
EFT32615	21/11/2013	ATI-MIRAGE TRAINING SOLUTIONS	REGISTRATION FOR 2 STAFF MEMBERS TO ATTEND VARIOUS COURSES	1,151.49
EFT32616	21/11/2013	1ST GOOSEBERRY HILL SCOUT GROUP	KIDSPORT FUNDING FOR VARIOUS PLAYERS	519.00
EFT32617	21/11/2013	COCA-COLA AMATIL (AUST) PTY LTD	KIOSK SUPPLIES FOR HARTFIELD RECREATION CENTRE	1,778.35
EFT32618	21/11/2013	CONFECT - EXPRESS	KIOSK SUPPLIES FOR HARTFIELD RECREATION CENTRE	389.70
EFT32619	21/11/2013	ADVANCE AUTOQUIP	YEARLY VEHICLE HOIST INSPECTION	159.50
EFT32620	21/11/2013	G FORCE PRINTING	SUPPLY OF PRINTED STATIONERY STOCK	1,513.05
EFT32621	21/11/2013	T-QUIP	PLANT / VEHICLE PARTS	662.85
EFT32622	21/11/2013	STAMP - IT RUBBER STAMPS	SUPPLY OF PASSPORT STAMPS FOR WALK THE ZIG ZAG	277.65
EFT32623	21/11/2013	AGCRETE	FOOTPATH DEPOSIT REFUND	1,000.00
EFT32624	21/11/2013	MIRACLE RECREATION EQUIPMENT	SUPPLY AND INSTALL SHADE SAILS AT SHEFFIELD ESTATE RESERVE WATTLE GROVE AND BILL SHAW RESERVE	36,929.20
EFT32625	21/11/2013	HYDROQUIP PUMPS	MAINTENANCE OF PUMPING INSTALLATIONS	286.00
EFT32626	21/11/2013	DIRECT TRADES SUPPLY PTY LTD	HARDWARE SUPPLIES	2,344.51
EFT32627	21/11/2013	CEDAR HOMES	BUILDING SERVICES LEVY REFUNDED AS APPLICATION CANCELLED	104.60
EFT32628	21/11/2013	GREENWAY ENTERPRISES	GARDEN / RESERVE SUPPLIES	1,313.27
EFT32629	21/11/2013	CABLE LOCATES & CONSULTING	LOCATION OF UNDERGROUND SERVICES AT THE CORNER OF LENORI RD AND RAILWAY RD GOOSEBERRY HILL	4,263.00
EFT32630	21/11/2013	LOUELLA ZITMAN	PART DOG REGISTRATION REFUND	57.00
EFT32631	21/11/2013	GOOSEBERRY HILL ARTS & CRAFTS	KEY BOND REFUND ID # 26019	100.00
EFT32632	21/11/2013	BGC CEMENT BAGGED PRODUCTS	ROAD MATERIALS SUPPLIES	713.33

Shire of Kalamunda
Creditors' Payments for the period 6 November to 20 November 2013

Chq/EFT	Date	Name	Description	Amount
EFT32633	21/11/2013	S W HIGGINS & F J GILFRED	RATES REFUND	297.18
EFT32634	21/11/2013	INSIGHT CCS PTY LTD	AFTER HOURS ANSWERING SERVICES	3,244.60
EFT32635	21/11/2013	PLANNING INSTITUTE AUSTRALIA	REGISTRATION FOR 10 STAFF TO ATTEND HEALTHY SPACES AND PLACES TRAINING	4,525.92
EFT32636	21/11/2013	SNAP PRINTING - MIDLAND	PRINTING OF BUSINESS CARDS FOR VARIOUS STAFF	468.00
EFT32637	21/11/2013	KERB - FIX	KERB REPAIRS / MAINTENANCE FOR VARIOUS LOCATIONS	691.90
EFT32638	21/11/2013	MAIDA VALE DELIVERY ROUND	PAPER AND MAGAZINES DELIVERIES FOR HIGH WYCOMBE LIBRARY	73.85
EFT32639	21/11/2013	EASTERN REGION SECURITY	SECURITY SERVICES TO VARIOUS SHIRE BUILDINGS	5,811.71
EFT32640	21/11/2013	G.D.CHARLTON	PODIATRY SERVICES AT JACK HEALEY CENTRE	1,720.10
EFT32641	21/11/2013	WEBSITE WEED & PEST PTY LTD	WEED CONTROL AT VARIOUS LOCATIONS	14,976.94
EFT32642	21/11/2013	ALEXANDRA BAK	SPORTS STAR AWARDS PROGRAM - ROUND ONE NOVEMBER 2013	250.00
EFT32643	21/11/2013	INTEGRITY CARPETS PTY LTD	CARPET REPLACEMENT AT FORRESTFIELD LIBRARY	9,064.00
EFT32644	21/11/2013	SECURE TRAFFIC	TRAFFIC MANAGEMENT FOR VARIOUS LOCATIONS	12,507.00
EFT32645	21/11/2013	JACKSON MCDONALD LAWYERS	LEGAL EXPENSES	20,307.65
EFT32646	21/11/2013	EASIFLEET MANAGEMENT	STAFF CONTRIBUTIONS TO NOVATED LEASES	9,719.02
EFT32647	21/11/2013	HUMES	DRAINAGE SUPPLIES FOR VARIOUS LOCATIONS	2,849.35
EFT32648	21/11/2013	PRO-LAMPS PTY LTD	SUPPLY ELECTRICAL FITTINGS AND GLOBES	798.60
EFT32649	21/11/2013	BOYA EQUIPMENT PTY LTD	PLANT / VEHICLE PARTS	21,965.57
EFT32650	21/11/2013	LONE STAR DEVELOPMENTS PTY LTD	RETURN OF MAINTENANCE BOND - WAPC 142964 - LOT 7 (15) WILLIAM STREET WATTLE GROVE	3,123.50
EFT32651	21/11/2013	PERTH RESIDENTIAL DEVELOPMENTS	PLANNING APPLICATION FEE REFUND	582.60
EFT32652	21/11/2013	THE CHAIR DOCTOR WA PTY LTD	SUPPLY OF OFFICE FURNITURE	1,160.50

Shire of Kalamunda
Creditors' Payments for the period 6 November to 20 November 2013

Chq/EFT	Date	Name	Description	Amount
EFT32653	21/11/2013	THE PERTH MINT AUSTRALIA	SUPPLY OF 2013 CITIZENSHIP COIN IN PRESENTATION CARD FOR LOCAL GOVERNMENTS	759.55
EFT32654	21/11/2013	AUSTRALIAN SUPERANNUATION	SUPERANNUATION CONTRIBUTIONS	1,427.71
EFT32655	21/11/2013	OVEN SPARKLE PTY LTD	OVEN CLEANING SERVICES FOR VARIOUS LOCATIONS	726.00
EFT32656	21/11/2013	BULLIVANTS PTY LTD	PLANT / VEHICLE PARTS	440.00
EFT32657	21/11/2013	ROAD SIGNS AUSTRALIA (ALLPACK SIGNS)	TRAFFIC PROTECTION PRODUCTS / SIGNAGE	994.40
EFT32658	21/11/2013	MULTILEC ENGINEERING	QUARTERLY SERVICING & TESTING OF LIFTS	1,910.70
EFT32659	21/11/2013	ALPHONSUS NG	SPORTS STAR AWARDS PROGRAM - ROUND ONE NOVEMBER 2013	250.00
EFT32660	21/11/2013	HOLCIM AUSTRALIA PTY LTD	ROAD MATERIALS FOR VARIOUS LOCATIONS	1,269.66
EFT32661	21/11/2013	SEVENTH DAY ADVENTIST CHURCH (WA CONFERENCE) LTD	HALL AND KEY BOND REFUND	450.00
EFT32662	21/11/2013	LESMURDIE ARTS & CRAFTS INC	KEY BOND REFUND	50.00
EFT32663	21/11/2013	D.A CHRISTIE P/L T/as CHRISTIE PARKSAFE	SUPPLY OF 2 ELECTRIC CCQ HOTPLATES	14,899.50
EFT32664	21/11/2013	PETER TUCATS SUPERANNUATION FUND	SUPERANNUATION CONTRIBUTIONS	250.70
EFT32665	21/11/2013	DRAINFLOW SERVICES PTY LTD	CLEANING / MAINTAINING STORM WATER DRAINS	24,422.20
EFT32666	21/11/2013	BINDALE SUPERANNUATION FUND	SUPERANNUATION CONTRIBUTIONS	65.50
EFT32667	21/11/2013	APOLLO FABRICATIONS	SUPPLY OF 4 HOOK LIFT BINS	73,920.00
EFT32668	21/11/2013	QUICKCOLOUR PRINT	SUPPLY OF SIGNAGE	2,400.00
EFT32669	21/11/2013	NEVERFAIL SPRINGWATER LTD (PETER ANDERTON CEN)	BOTTLED WATER SUPPLIES / MAINTENANCE	95.00
EFT32670	21/11/2013	WEST COAST PROFILERS PTY LTD	SUPPLY AND LAYING OF ASPHALT AND PROFILING AT VARIOUS LOCATIONS	6,756.11
EFT32671	21/11/2013	NEVERFAIL SPRINGWATER LTD (ZZCC)	BOTTLED WATER SUPPLIES / MAINTENANCE	26.65
EFT32672	21/11/2013	BRIKMAKERS	SUPPLY OF BRICKS	799.48
EFT32673	21/11/2013	CONTRAFLOW	TRAFFIC MANAGEMENT FOR VARIOUS LOCATIONS	2,024.00

Shire of Kalamunda
Creditors' Payments for the period 6 November to 20 November 2013

Chq/EFT	Date	Name	Description	Amount
EFT32674	21/11/2013	NATHAN & CLAIRE PRINCEP	RATES REFUND	466.03
EFT32675	21/11/2013	PH CONCRETE (WA) PTY LTD	FOOTPATH MAINTENANCE / REPAIRS FOR VARIOUS LOCATIONS	46,571.67
EFT32676	21/11/2013	IDEAL HOMES PTY LTD	FOOTPATH DEPOSIT REFUND	1,000.00
EFT32677	21/11/2013	DAVID GRAY & CO PTY LTD	WHEELIE RUBBISH BIN SUPPLIES	2,043.98
EFT32678	21/11/2013	SOFTWOOD TIMBERYARDS T/A PATIO LIVING	FOOTPATH DEPOSIT REFUND	1,000.00
EFT32679	21/11/2013	VANESSA ROBINSON	REIMBURSEMENT FOR THE PURCHASE OF VARIOUS GOODS FOR SENIORS WEEK	1,011.24
EFT32680	21/11/2013	BENCHMARK MAINTENANCE SERVICES	CONTRACTOR BUILDING MAINTENANCE VARIOUS BUILDINGS	973.50
EFT32681	21/11/2013	DARREN J DAVIES	FOOTPATH DEPOSIT REFUND	1,000.00
EFT32682	21/11/2013	FONZ'S BOBCAT & TRUCK HIRE	PLANT EQUIPMENT AND OPERATOR HIRE FOR VARIOUS LOCATIONS	5,428.28
EFT32683	21/11/2013	ARMADILLO GROUP PTY LTD	PLANT / VEHICLE PARTS	1,652.79
EFT32684	21/11/2013	BEAVER TREE SERVICES	TREE REMOVAL / PRUNING FOR VARIOUS LOCATIONS	17,446.00
EFT32685	21/11/2013	VISION SUPER PTY LTD	SUPERANNUATION CONTRIBUTIONS	758.66
EFT32686	21/11/2013	GREENSENSE PTY LTD	WALGA REPORTING PLATFORM ANNUAL SUBSCRIPTION FEE 8/10/2013 TO 8/10/2014	4,064.64
EFT32687	21/11/2013	TEMCO DISTRIBUTORS PTY LTD	SUPPLY OF 1 CORDLESS PAINT SPRAYER	1,137.95
EFT32688	21/11/2013	KALEIDOSCOPE CRAFT KITS	DRY CLEANING / WASHING SERVICES FOR HARTFIELD PARK RECREATION CENTRE	140.00
EFT32689	21/11/2013	POCKETPHONE COMMUNICATIONS	PLANT / VEHICLE PARTS	919.00
EFT32690		EFT PAYMENT CANCELLED		
EFT32691	21/11/2013	ACCESS OFFICE INDUSTRIES	LIBRARY SUPPLIES	1,195.70
EFT32692	21/11/2013	BEST VALUE PATIOS & SHEDS	REFUND OF BUILDING APPLICATION AS CANCELLED	40.50

**Shire of Kalamunda
 Creditors' Payments for the period 6 November to 20 November 2013**

Chq/EFT	Date	Name	Description	Amount
EFT32693	21/11/2013	FIRE 4 HIRE	VERGE / RESERVE MAINTENANCE AT VARIOUS LOCATIONS	3,168.00
EFT32694	21/11/2013	FUJI XEROX AUSTRALIA PTY LTD	PHOTOCOPYING CHARGES	5,738.23
EFT32695	21/11/2013	MCLERNONS EVERYTHING BUSINESS	SUPPLY OF FURNITURE, FIXTURES AND FITTINGS	244.80
EFT32696	21/11/2013	AARON J STIRK	TECHNICIAN SERVICES FOR VARIOUS EVENTS	986.00
EFT32697	21/11/2013	LINDSAY GOODWIN	TECHNICIAN SERVICES FOR VARIOUS EVENTS	1,020.00
EFT32698	21/11/2013	MARK ANDREW COCKRELL	FOOTPATH DEPOSIT REFUND	1,000.00
EFT32699	21/11/2013	A PLUS TRAINING SOLUTIONS	REGISTRATION FOR 5 STAFF TO ATTEND CHAINSAW SAFETY TRAINING COURSE	2,600.00
EFT32700	21/11/2013	VICTORIA PHYSIOTHERAPY GROUP	PHYSICAL CAPACITIES ASSESSMENT - SUPPORT WORKER - HACC	137.50
EFT32701	21/11/2013	UNIQUE WASTE MANAGEMENT SERVICES	HIRE OF TRUCK/OPERATOR TO TRANSPORT TO AND FROM WALLISTON TRANSFER STATION ALL MATERIALS	10,172.25
EFT32702	21/11/2013	THE TEMP FENCE SHOP	SUPPLY OF FENCING BRACKETS	330.00
EFT32703	21/11/2013	HARE & FORBES PTY LTD	PLANT / VEHICLE PARTS	441.00
EFT32704	21/11/2013	BLACK GECKO GRAPHIC DESIGN & PRINTING	PRINTING OF SHIRE TIP PASSES	371.80
EFT32705	21/11/2013	TANKS FOR HIRE	SUPPLY OF WATER TANKS - WALK THE ZIG ZAG 2013	499.41
EFT32706	21/11/2013	STRATEGEN ENVIRONMENTAL CONSULTANTS	WATER MONITORING AT MOIRA AVENUE AND SERVICES AT WILKINS ROAD	726.22
EFT32707	21/11/2013	ROBERT POWER	SPORTS STAR AWARDS PROGRAM - ROUND ONE NOVEMBER 2013	250.00
EFT32708	21/11/2013	NATIONAL MEASUREMENT INSTITUTE	DELIVERY OF SAMPLE BOTTLES AND LABORATORY ANALYSIS OF WATER SAMPLES	945.14
EFT32709	21/11/2013	TRU BLU HIRE AUSTRALIA PTY LTD	EQUIPMENT HIRE FOR VARIOUS EVENTS	1,138.73

Shire of Kalamunda
Creditors' Payments for the period 6 November to 20 November 2013

Chq/EFT	Date	Name	Description	Amount
EFT32710	21/11/2013	AROUNDABOUT GARDENING SERVICES	VERGE / GARDEN MAINTENANCE FOR VARIOUS LOCATIONS	6,435.00
EFT32711	21/11/2013	LEWIS FAMILY TRUST	IDENTIFY LINK CABLES FOR CAMERAS AT ZIG ZAG CULTURAL CENTRE	88.00
EFT32712	21/11/2013	KRISTY LEE MOLLIKA	PERFORMANCE AT SENIORS WEEK VARIETY CONCERT 2013	3,550.00
EFT32713	21/11/2013	THE RETURNED & SERVICES LEAGUE OF AUSTRALIA WA BRANCH INC	REMEMBRANCE DAY 2013 - RSL POPPY DONATIONS	115.35
EFT32714	21/11/2013	AUSWEST DISPLAYS	SUPPLY, INSTALL & DISMANTLE OF CHRISTMAS DECORATIONS.	15,400.00
EFT32715	21/11/2013	MACEY SIMPKINS	SPORTS STAR AWARDS PROGRAM - ROUND ONE NOVEMBER 2013	250.00
EFT32716	21/11/2013	CITY OF STIRLING	MEALS ON WHEELS PROGRAM - SEPTEMBER 2013	5,026.92
EFT32717	21/11/2013	AMCOR RECYCLING	WASTE CARDBOARD RECYCLING CHARGES	299.20
EFT32718	21/11/2013	SAFE T CARD AUSTRALIA PTY LTD	MONTHLY MONITORING CHARGES FOR VARIOUS LOCATIONS	99.00
EFT32719	21/11/2013	THOMAS & KAELEE KOPROWICZ	FENCING REBATE LOT 911 MONARCH WAY WATTLE GROVE	2,000.00
EFT32720	21/11/2013	GREG J & SHELLEY M HICKS	FOOTPATH DEPOSIT REFUND	1,200.00
EFT32721	21/11/2013	ECO-ENVIRONMENTAL	SUPPLY OF MULTI-PARAMETER METER AND ACCESSORIES FOR ENVIRONMENTAL HEALTH	143.00
EFT32722	21/11/2013	RAJESH MALDE	REFUND OF EMPLOYMENT CONTRACT ALLOWANCE	150.00
EFT32723	21/11/2013	ROBERTS LANDSCAPES AND PAVING	SUPPLY OF PAVING MATERIALS FOR COMMUNITY GARDEN	5,800.00
EFT32724	21/11/2013	SAVILLS VALUATIONS PTY LTD	VALUATION OF STAGE 1 - HIGH WYCOMBE INDUSTRIAL AREA	13,200.00

Shire of Kalamunda
Creditors' Payments for the period 6 November to 20 November 2013

Chq/EFT	Date	Name	Description	Amount
EFT32725	21/11/2013	MPJ (WA) PTY LTD	SUPERANNUATION CONTRIBUTIONS	442.52
EFT32726	21/11/2013	THE ELECTRIC STOVEMAN	SERVICE CALL FOR 2 STANDARD ELECTRIC OVENS/COOKTOP AT HARTFIELD PARK RECREATION CENTRE	187.00
EFT32727	21/11/2013	SHARMILA LALITHA	CROSSOVER CONTRIBUTION	385.00
EFT32728	21/11/2013	STEPHANIE CAIN	KALAMUNDA SPORTS STAR FUNDING PROGRAM - NOVEMBER 2013 ROUND ONE	250.00
EFT32729	21/11/2013	PUBLIC TRANSPORT AUTHORITY OF WA	BUS STOP AT GOOSEBERRY HILL RD - PROVISION OF FOOTPATH EXTENSION - 50% CONTRIBUTION	1,876.88
EFT32730	21/11/2013	TOTAL GREEN RECYCLING	E- WASTE RECYCLING CHARGES	1,629.36
EFT32731	21/11/2013	DMG CONSTRUCTION (WA) PTY LTD	FOOTPATH DEPOSIT REFUND	1,200.00
EFT32732	21/11/2013	ISABELLA HOLT	SPORTS STAR AWARDS PROGRAM - ROUND ONE NOVEMBER 2013	250.00
EFT32733	21/11/2013	CUROST MILK SUPPLY	MILK SUPPLY FOR ADMINISTRATION BUILDING AND DEPOT	199.47
EFT32734	21/11/2013	ELAN ENERGY MANAGEMENT	WASTE TYRE RECYCLING CHARGES	1,932.84
EFT32735	21/11/2013	ENVIRO PIPES PTY LTD	DRAINAGE UPGRADE AT MARRI CRESCENT	3,742.20
EFT32736	21/11/2013	AVON HILLS ENVIRONMENTAL	WEED CONTROL AT VARIOUS LOCATIONS	7,425.00
EFT32737	21/11/2013	JTAGZ PTY LTD	SUPPLY LIFETIME TAGS FOR CATS	412.50
EFT32738	21/11/2013	DYMOCKS CAROUSEL	LIBRARY SUPPLIES	350.00
EFT32739	21/11/2013	JARED SPENCER	SPORTS STAR AWARDS PROGRAM - ROUND ONE NOVEMBER 2013	250.00
EFT32740	21/11/2013	MPK TREE SERVICES	TREE REMOVAL / BRANCH PRUNING AT VARIOUS LOCATIONS	25,315.95
EFT32741	21/11/2013	SAWYERS VALLEY PRIMARY SCHOOL	HALL AND KEY BOND REFUND	450.00
EFT32742	21/11/2013	TURFWORKS WA PTY LTD	MOWING AT VARIOUS LOCATIONS	9,256.00

Shire of Kalamunda
Creditors' Payments for the period 6 November to 20 November 2013

Chq/EFT	Date	Name	Description	Amount
EFT32743	21/11/2013	PRICEWATERHOUSECOOPERS	PROFESSIONAL SERVICES - GST REFUND CLAIM. FEE FOR THE QUANTIFICATION AND RECOVERY OF THE GST OVERPAID BY THE BY THE SHIRE OF KALAMUNDA ON ITS SMOKEBUSH ESTATE LOT SALES	78,067.00
EFT32744	21/11/2013	A1 TROJAN PEST CONTROL	PEST CONTROL SERVICES FOR VARIOUS LOCATIONS	955.00
EFT32745	21/11/2013	PATH TRANSIT PTY LTD	RATES REFUND	357.26
EFT32746	21/11/2013	SPARKS REFRIGERATION AND AIRCONDITIONING	SUPPLY OF GAS REMOVAL SERVICES FOR WHITE GOODS AT WALLISTON TRANSFER STATION	1,786.98
EFT32747	21/11/2013	IRRIGATION WA PTY LTD	IRRIGATION MAINTENANCE AT TYLER SPRINGS ESTATE	66.00
EFT32748	21/11/2013	BRITTANY HARRUP	SPORTS STAR AWARDS PROGRAM - ROUND ONE NOVEMBER 2013	250.00
EFT32749	21/11/2013	NEVERFAIL SPRINGWATER LTD (ADMIN OFFICE)	BOTTLED WATER SUPPLIES / MAINTENANCE	26.65
EFT32750	21/11/2013	STAN THE TYRE MAN (STAN'S TYRE SERVICE WA)	PLANT / VEHICLE PARTS	797.50
EFT32751	21/11/2013	DATACOM SYSTEMS (WA) PTY LTD	COMPUTERS AND ACCESSORIES FOR ENTIRE IT INFRASTRUCTURE REPLACEMENT PROJECT	276,374.99
EFT32752	21/11/2013	KURTIS KING	SPORTS STAR AWARDS PROGRAM - ROUND ONE NOVEMBER 2013	250.00
EFT32753	21/11/2013	WOBBLYJULES INVESTMENTS FUND	SUPERANNUATION CONTRIBUTIONS	203.68
EFT32754	21/11/2013	ANITA WAWRZYNIAK	PLANNING APPLICATION FEE REFUND	147.00
EFT32755	21/11/2013	AUSCO MODULAR PTY LTD	LETTER OF DESIGN COMPLIANCE FOR THE CAT POUND	825.00
EFT32756	21/11/2013	EDWARD CONSIDINE	FOOTPATH DEPOSIT REFUND	1,000.00
EFT32757	21/11/2013	MANAAKI NETBALL CLUB	KIDSPORT FUNDING FOR VARIOUS PLAYERS	100.00
EFT32758	21/11/2013	NORTHERN SAINTS BASKETBALL CLUB INC	KIDSPORT FUNDING FOR VARIOUS PLAYERS	160.00
EFT32759	21/11/2013	ENVIRO SWEEP	FOOTPATH SWEEPING SERVICES	21,946.38

**Shire of Kalamunda
 Creditors' Payments for the period 6 November to 20 November 2013**

Chq/EFT	Date	Name	Description	Amount
EFT32760	21/11/2013	ALEC CAMPBELL	SPORTS STAR AWARDS PROGRAM - ROUND ONE NOVEMBER 2013	250.00
EFT32761	21/11/2013	WORM AFFAIR	SUPPLY TUMBLEWEED WORM CAFES AND STARTER PACKS OF WORMS	220.00
EFT32762	21/11/2013	DEVONTAY TAUITI	SPORTS STAR AWARDS PROGRAM - ROUND ONE NOVEMBER 2013	250.00
EFT32763	21/11/2013	TAYLA HOYCARD	SPORTS STAR AWARDS PROGRAM - ROUND ONE NOVEMBER 2013	250.00
EFT32764	21/11/2013	TUMAIA NGAKOTI	SPORTS STAR AWARDS PROGRAM - ROUND ONE NOVEMBER 2013	150.00
EFT32765	21/11/2013	CHLOE SAUZIER	SPORTS STAR AWARDS PROGRAM - ROUND ONE NOVEMBER 2013	250.00
EFT32766	21/11/2013	PERTH WASTE PTY LTD	PROVISION OF WEEKLY COLLECTION AND DISPOSAL OF PUTRESCIBLE WASTE SERVICES	222,633.10
EFT32767	21/11/2013	INSITE SURFACING	SUPPLY AND LAY DUAL DENSITY SURFACE RUBBER AT VARIOUS LOCATIONS	26,625.72
EFT32768	21/11/2013	FORT KNOX RECORDS MANAGEMENT	OFFSITE STORAGE OF RECORDS	418.00
EFT32769	21/11/2013	OLI	DEVELOPMENT OF BRAND IDENTITY/LOGO FOR THE SHIRE'S YOUTH ADVISORY GROUP 'THE INFLUENCE'	500.00
EFT32770	21/11/2013	MICK DEVINE	CARICATURES FOR SENIORS DANCE	450.00
EFT32771	21/11/2013	AUSTRALIAN CATHOLIC SUPERANNUATION & RETIREMENT FUND (ACSRF)	SUPERANNUATION CONTRIBUTIONS	234.60
EFT32772	21/11/2013	DEEP GREEN LANDSCAPING PTY LTD	PROGRESS PAYMENT 1- SUPPLY AND INSTALL 6 VERTICAL GARDENS IN THE TOWN MALL	10,564.29
EFT32773	21/11/2013	NICOLE LEDINGTON	SPORTS STAR AWARDS PROGRAM - ROUND ONE NOVEMBER 2013	250.00

**Shire of Kalamunda
 Creditors' Payments for the period 6 November to 20 November 2013**

Chq/EFT	Date	Name	Description	Amount
EFT32774	21/11/2013	ASSET INFRASTRUCTURE MANAGEMENT	BUILDING INSPECTIONS AND REPORT FOR ALAN FERNIE & JORGENSEN PARK PAVILION	4,840.00
EFT32775	21/11/2013	SHELDON GILL	SPORTS STAR AWARDS PROGRAM - ROUND ONE NOVEMBER 2013	250.00
EFT32776	21/11/2013	DKM INDUSTRIES P/L T/A AAA CUSTOM TROLLEYS	CATERING SUPPLIES FOR PETER ANDERTON CENTRE - FAS120 - FOLDING ALUMINIUM STACKER	1,122.00
EFT32777	21/11/2013	GOLDSTEIN ESWOOD	COMMERCIAL COOKING SUPPLIES FOR PETER ANDERTON CENTRE	458.70
EFT32778	21/11/2013	JOHN COLES NURSURY	SUPPLY OF SHRUBS AND PLANTS FOR GARDEN BEDS AT KALAMUNDA TOWN HALL	329.90
EFT32779	21/11/2013	SEWER EQUIPMENT COMPANY (AUST)	SUPPLY OF QUICKVIEW INSPECTION CAMERA	28,000.80
EFT32780	21/11/2013	PROFESSIONALS WELLSTEAD TEAM	RATES REFUND	828.88
EFT32781	21/11/2013	SPRAYLINE SPRAYING EQUIPMENT	SUPPLY OF SPRAYING EQUIPMENT AND ACCESSORIES	3,690.00
EFT32782	21/11/2013	WET2DRY PLUMBING	GENERAL PLUMBING MAINTENANCE SERVICES AT VARIOUS LOCATIONS	451.00
EFT32783	21/11/2013	KENNETH OPOKU	SPORTS STAR AWARDS PROGRAM - ROUND ONE NOVEMBER 2013	250.00
EFT32784	21/11/2013	ANTON MUHLBOCK	ARTWORK SOLD - SPRING IN THE HILLS EXHIBITION	140.00
EFT32785	21/11/2013	ROD MARSHALL	PLANNING APPLICATION FEE REFUND	960.00
EFT32786	21/11/2013	REDLINE (WA) PTY LTD	PROGRESS PAYMENT 1 - CONSTRUCTION OF SEWER MAIN - ABERNETHY ROAD	383,705.41
EFT32787	21/11/2013	BOLLYWOOD DANCE STUDIO	HALL AND KEY BOND REFUND	350.00
EFT32788	21/11/2013	LOCKRIDGE MEDICAL CENTRE PTY LTD	MEDICAL REPORT FOR STAFF MEMBER	99.00
EFT32789	21/11/2013	ELIZA GELMI	SPORTS STAR AWARDS PROGRAM - ROUND ONE NOVEMBER 2013	250.00

Shire of Kalamunda
Creditors' Payments for the period 6 November to 20 November 2013

Chq/EFT	Date	Name	Description	Amount
EFT32790	21/11/2013	CHELSEA RAYNER	SPORTS STAR AWARDS PROGRAM - ROUND ONE NOVEMBER 2013	250.00
EFT32791	21/11/2013	AMY THOMAS	SPORTS STAR AWARDS PROGRAM - ROUND ONE NOVEMBER 2013	250.00
EFT32792	21/11/2013	DI-ANDRA HOLT	SPORTS STAR AWARDS PROGRAM - ROUND ONE NOVEMBER 2013	250.00
EFT32793	21/11/2013	BENJAMIN TIRABOSCO	SPORTS STAR AWARDS PROGRAM - ROUND ONE NOVEMBER 2013	250.00
EFT32794	21/11/2013	MD HOLDINGS AUS PTY LTD	FOOTPATH DEPOSIT REFUND	1,000.00
EFT32795	21/11/2013	OJOLAS HOLDINGS P/L T/A DIVERSE SHOPFITTEES	FOOTPATH DEPOSIT REFUND	1,000.00
EFT32796	21/11/2013	MYSONS & COMPANY PTY LTD	RETURN OF CROSSOVER / BATTLEAXE AND SOAKWELL BOND - WAPC 409-12 - LOT 5 (43) RANGEVIEW ROAD HIGH WYCOMBE	12,000.00
EFT32797	21/11/2013	MICHAEL HENG LIN PENG	PART DOG REGISTRATION REFUND	38.00
EFT32798	21/11/2013	ALICIA RAYNER	CROSSOVER CONTRIBUTION	385.00
EFT32799	21/11/2013	MATTHEW DOYLE	CROSSOVER CONTRIBUTION	385.00
EFT32800	21/11/2013	SALLY HARRISON	HALL AND KEY BOND REFUND	350.00
EFT32801	21/11/2013	COMMUNITY SOLUTIONS	KEY BOND REFUND	50.00
EFT32802	21/11/2013	MICHELLE STEWARD	HALL AND KEY BOND REFUND	350.00
EFT32803	21/11/2013	ETHAN MUILENBURG	HALL AND KEY BOND REFUND	1,050.00
EFT32804	21/11/2013	EMMA J RAMSDEN	HALL AND KEY BOND REFUND	550.00
EFT32805	21/11/2013	TONY TUCKNOTT	KEY BOND REFUND ID	50.00
EFT32806	25/11/2013	THOMAS HOUSTON FRASER	RATES REFUND	541.12
EFT32807	25/11/2013	ALLAN MORTON	COUNCILLOR ALLOWANCE - 27/11/13 - 20/12/13	1,474.03
EFT32808	25/11/2013	RJ & DA BENTLEY	RATES REFUND	728.81
EFT32809	25/11/2013	JOHN GIARDINA	COUNCILLOR ALLOWANCE - 27/11/13 - 20/12/13	2,339.41

Shire of Kalamunda
Creditors' Payments for the period 6 November to 20 November 2013

Chq/EFT	Date	Name	Description	Amount
EFT32810	25/11/2013	GEOFF STALLARD	COUNCILLOR ALLOWANCE - 27/11/13 - 20/12/13	1,474.03
EFT32811	25/11/2013	IAN JUSTIN WHITTEN	COUNCILLOR ALLOWANCE - 27/11/13 - 20/12/13	1,474.03
EFT32812	25/11/2013	SUSAN BILICH	SHIRE PRESIDENT ALLOWANCE - 27/11/13 - 20/12/13	5,368.26
EFT32813	25/11/2013	MARGARET THOMAS	COUNCILLOR ALLOWANCE - 27/11/13 - 20/12/13	1,474.03
EFT32814	25/11/2013	NOREEN TOWNSEND	COUNCILLOR ALLOWANCE - 27/11/13 - 20/12/13	1,474.03
EFT32815	25/11/2013	FRANK LINDSEY	COUNCILLOR ALLOWANCE - 27/11/13 - 20/12/13	1,474.03
EFT32816	25/11/2013	SIMON DI ROSSO	COUNCILLOR ALLOWANCE - 27/11/13 - 20/12/13	1,474.03
EFT32817	25/11/2013	ANDREW WADDELL	COUNCILLOR ALLOWANCE - 27/11/13 - 20/12/13	1,474.03
EFT32818	25/11/2013	DYLAN O'CONNOR	COUNCILLOR ALLOWANCE - 27/11/13 - 20/12/13	1,474.03
EFT32819	25/11/2013	TTOP PTY LTD	RATES REFUND	1,178.45
EFT32820	25/11/2013	ROBERT EMERY	COUNCILLOR ALLOWANCE - 27/11/13 - 20/12/13	1,474.03
EFT32821	25/11/2013	BRONWEN ANNE BRANCH	RATES REFUND	330.46
67231	06/11/2013	GOVERNMENT OF WESTERN AUSTRALIA DEPARTMENT OF PLANNING	FREEDOM OF INFORMATION	30.00
67232	06/11/2013	HOSPITAL BENEFIT FUND OF WA	PAYROLL DEDUCTIONS	363.45
67233	06/11/2013	AUSTRALIAN SERVICES UNION	PAYROLL DEDUCTIONS	195.52
67234	06/11/2013	MUNICIPAL EMPLOYEES UNION	PAYROLL DEDUCTIONS	485.00
67235	06/11/2013	TELSTRA CORPORATION	TELEPHONE EXPENSES	6,155.59
67236	06/11/2013	WATER CORPORATION	WATER USE AND SERVICE CHARGE FEES	1,552.69
67237	06/11/2013	BCITF	LEVY FEE - OCTOBER 2013	28,832.65
67238	06/11/2013	SYNERGY	POWER CHARGES	24,578.50
67239	06/11/2013	ALINTA ENERGY	GAS CHARGES	1,703.70
67240	06/11/2013	ZURICH INSURANCE	INSURANCE	500.00
67241	06/11/2013	COMMISSIONER OF POLICE	VOLUNTEER POLICE CHECKS	195.90
67242	06/11/2013	BUILDING COMMISSION	BUILDING LEVY - OCTOBER 2013	17,701.96
67243	06/11/2013	CASH - KALAMUNDA LIBRARY	PETTY CASH REIMBURSEMENT	231.63

Shire of Kalamunda
Creditors' Payments for the period 6 November to 20 November 2013

Chq/EFT	Date	Name	Description	Amount
67244	06/11/2013	CASH - FORRESTFIELD LIBRARY	PETTY CASH REIMBURSEMENT	149.23
67245	06/11/2013	CASH - HARTFIELD PARK	PETTY CASH REIMBURSEMENT	59.95
67246	06/11/2013	WESTSCHEME SUPERANNUATION	SUPERANNUATION CONTRIBUTIONS	753.53
67247	06/11/2013	REST SUPERANNUATION	SUPERANNUATION CONTRIBUTIONS	949.13
67248	06/11/2013	AMP RETIREMENT SAVINGS ACCOUNT	SUPERANNUATION CONTRIBUTIONS	250.66
67249	06/11/2013	M COLLODEL	STAINED GLASS ANNIVERSARY CELEBRATIONS	98.50
67250	06/11/2013	COGNET NOMINEES PTY LTD ACF MAP SUPER FUND	SUPERANNUATION CONTRIBUTIONS	81.06
67251	06/11/2013	COLONIAL 1ST STATE SUPERANNUATION	SUPERANNUATION CONTRIBUTIONS	1,882.04
67252	06/11/2013	HESTA SUPER FUND	SUPERANNUATION CONTRIBUTIONS	713.30
67253	06/11/2013	AMPLIFE LIMITED	SUPERANNUATION CONTRIBUTIONS	87.55
67254	06/11/2013	CASH - MEALS ON WHEELS	PETTY CASH REIMBURSEMENT	546.30
67255	06/11/2013	CASH - LESMURDIE LIBRARY	PETTY CASH REIMBURSEMENT	67.55
67256	06/11/2013	CASH - KALAMUNDA HACC	PETTY CASH REIMBURSEMENT	411.30
67257	06/11/2013	ANZ SUPER ADVANTAGE	SUPERANNUATION CONTRIBUTIONS	195.76
67258	06/11/2013	AMP SUPER LEADER	SUPERANNUATION CONTRIBUTIONS	70.70
67259	06/11/2013	UNISUPER	SUPERANNUATION CONTRIBUTIONS	258.61
67260	06/11/2013	HOSTPLUS PTY LTD	SUPERANNUATION CONTRIBUTIONS	189.99
67261	06/11/2013	AUSTRALIAN RETIREMENT FUND - ARF ADMINISTRATION	SUPERANNUATION CONTRIBUTIONS	79.52
67262	06/11/2013	COMMONWEALTH SUPERSELECT	SUPERANNUATION CONTRIBUTIONS	127.71
67263	06/11/2013	COMMUNITY PROPERTY SERVICES	RATES REFUND	482.85
67264	06/11/2013	CASH - ZIG ZAG CULTURAL CENTRE	PETTY CASH REIMBURSEMENT	40.90
67265	06/11/2013	MACQUARIE WRAP	SUPERANNUATION CONTRIBUTIONS	573.90
67266	06/11/2013	WATER CORPORATION SUPERANNUATION PLAN	SUPERANNUATION CONTRIBUTIONS	216.40
67267	06/11/2013	TWU SUPERANNUATION FUND	SUPERANNUATION CONTRIBUTIONS	190.00
67268	06/11/2013	AQUAGEM ENTERPRISES PTY LTD	BUILDING APPLICATION FEE REFUND	183.00

Shire of Kalamunda
Creditors' Payments for the period 6 November to 20 November 2013

Chq/EFT	Date	Name	Description	Amount
67269	06/11/2013	ONEPATH MASTERFUND	SUPERANNUATION CONTRIBUTIONS	529.08
67270	06/11/2013	ULTIMATE SUPERANNUATION SERVICE	SUPERANNUATION CONTRIBUTIONS	175.00
67271	20/11/2013	HOSPITAL BENEFIT FUND OF WA	PAYROLL DEDUCTIONS	363.45
67272	20/11/2013	AUSTRALIAN SERVICES UNION	PAYROLL DEDUCTIONS	195.52
67273	20/11/2013	MUNICIPAL EMPLOYEES UNION	PAYROLL DEDUCTIONS	504.40
67274	20/11/2013	TELSTRA CORPORATION	TELEPHONE EXPENSES	18,573.67
67275	20/11/2013	WATER CORPORATION	WATER USE AND SERVICE CHARGE FEES	13,175.61
67276	20/11/2013	SYNERGY	POWER CHARGES	104,594.80
67277	20/11/2013	ALINTA ENERGY	GAS CHARGES	946.95
67278	20/11/2013	DIRECTOR OF LICENSING SERVICES	NUMBER PLATES	360.00
67279	20/11/2013	RAC	ROADSIDE ASSISTANT	1,750.00
67280	20/11/2013	CASH - ADMIN	PETTY CASH REIMBURSEMENT	708.30
67281	20/11/2013	CASH - KALAMUNDA LIBRARY	PETTY CASH REIMBURSEMENT	255.35
67282	20/11/2013	CASH - FORRESTFIELD LIBRARY	PETTY CASH REIMBURSEMENT	141.50
67283	20/11/2013	WESTSCHEME SUPERANNUATION	SUPERANNUATION CONTRIBUTIONS	595.27
67284	20/11/2013	REST SUPERANNUATION	SUPERANNUATION CONTRIBUTIONS	1,168.12
67285	20/11/2013	AMP RETIREMENT SAVINGS ACCOUNT	SUPERANNUATION CONTRIBUTIONS	241.98
67286	20/11/2013	COGNET NOMINEES PTY LTD ACF MAP SUPER FUND	SUPERANNUATION CONTRIBUTIONS	89.49
67287	20/11/2013	COLONIAL 1ST STATE SUPERANNUATION	SUPERANNUATION CONTRIBUTIONS	912.67
67288	20/11/2013	HESTA SUPER FUND	SUPERANNUATION CONTRIBUTIONS	788.59
67289	20/11/2013	AMPLIFE LIMITED	SUPERANNUATION CONTRIBUTIONS	95.98
67290	20/11/2013	CASH - MEALS ON WHEELS	PETTY CASH REIMBURSEMENT	538.10
67291	20/11/2013	CASH - KALAMUNDA HACC	PETTY CASH REIMBURSEMENT	308.05
67292	20/11/2013	ANZ SUPER ADVANTAGE	SUPERANNUATION CONTRIBUTIONS	195.76
67293	20/11/2013	AMP SUPER LEADER	SUPERANNUATION CONTRIBUTIONS	89.70
67294	20/11/2013	ING INTEGRA PERSONAL SUPER	SUPERANNUATION CONTRIBUTIONS	173.32

Shire of Kalamunda
Creditors' Payments for the period 6 November to 20 November 2013

Chq/EFT	Date	Name	Description	Amount
67295	20/11/2013	UNISUPER	SUPERANNUATION CONTRIBUTIONS	258.61
67296	20/11/2013	HOSTPLUS PTY LTD	SUPERANNUATION CONTRIBUTIONS	95.00
67297	20/11/2013	AUSTRALIAN RETIREMENT FUND - ARF ADMINISTRATION	SUPERANNUATION CONTRIBUTIONS	79.53
67298	20/11/2013	COMMONWEALTH SUPERSELECT	SUPERANNUATION CONTRIBUTIONS	82.86
67299	20/11/2013	THE GOOD GUYS	ELECTRICAL SUPPLIES	350.00
67300	20/11/2013	CASH - ZIG ZAG CULTURAL CENTRE	PETTY CASH REIMBURSEMENT	101.80
67301	20/11/2013	CASH - KPAC	PETTY CASH REIMBURSEMENT	70.76
67302	20/11/2013	MACQUARIE WRAP	SUPERANNUATION CONTRIBUTIONS	618.73
67303	20/11/2013	WATER CORPORATION SUPERANNUATION PLAN	SUPERANNUATION CONTRIBUTIONS	216.40
67304	20/11/2013	TWU SUPERANNUATION FUND	SUPERANNUATION CONTRIBUTIONS	190.00
67305	20/11/2013	ONEPATH MASTERFUND	SUPERANNUATION CONTRIBUTIONS	182.44
67306	20/11/2013	ULTIMATE SUPERANNUATION SERVICE	SUPERANNUATION CONTRIBUTIONS	250.00
				4,306,883.64

Declaration of financial / conflict of interests to be recorded prior to dealing with each item.

71. Schedule of Council and Committee Meetings 2014

Previous Items	N/A
Responsible Officer	Chief Executive Officer
Service Area	Governance
File Reference	OR-MTG-006
Applicant	N/A
Owner	N/A
Attachment 1	Proposed Schedule of Council and Committee Meetings for the period February 2014 to December 2014.

PURPOSE

1. For Council to endorse the Schedule of Meetings for the period February 2014 to December 2014.

BACKGROUND

2. Council has previously agreed the cycle of Ordinary Meetings be as follows:
 - Development & Infrastructure Services Committee – second Monday of the month.
 - Corporate & Community Services Committee – third Monday of the month.
 - Ordinary Council Meeting – fourth Monday of the month.
3. Council policy determines that scheduled meeting dates which fall on a Public Holiday will move to the next available day and that meetings in December be brought forward by one week.
4. Committee and Council Meetings are held at 6.30pm in the Council Chambers of the Shire of Kalamunda, 2 Railway Road, Kalamunda.

DETAILS

5. The proposed meeting schedule has been developed in accordance with the above requirements, except the December Ordinary Council Meeting which will be scheduled for 6.00pm.

STATUTORY AND LEGAL CONSIDERATIONS

6. Section 5.4 (b) of the *Local Government Act 1995* (the Act), provides that the Council can decide when to hold ordinary meetings.
7. It is a requirement of Regulation 12 of the *Local Government (Administration) Regulations 1996* that local public notice be given of the meeting dates.

POLICY CONSIDERATIONS

8. Schedule of meetings has been developed in accordance with policy requirements.

COMMUNITY ENGAGEMENT REQUIREMENTS

9. Not required for this decision.

FINANCIAL CONSIDERATION

10. None from this decision.

STRATEGIC COMMUNITY PLAN

Strategic Planning Alignment

11. *Kalamunda Advancing: Strategic Community Plan to 2023*

Strategic Priority 6: Kalamunda Leads – Providing Good Government

SUSTAINABILITY

Social Implications

12. Nil.

Economic Implications

13. Nil.

Environmental Implications

14. Nil.

RISK MANAGEMENT CONSIDERATIONS

15.

Risk	Likelihood	Consequence	Action/Strategy
Proposed schedule of meetings is not approved	Low	High	Council would need to adopt an alternative strategy to set meeting dates in order that it complies with the requirements of the Act.

OFFICER COMMENT

16. The proposed meeting scheduled has been developed in accordance with the current meeting cycle.
17. Meeting dates have not been scheduled for the Audit & Risk Committee as it is convened on an as needs basis.

Voting Requirements: Simple Majority

OFFICER RECOMMENDATION (C&C 71/2013)

That Council:

1. Endorses the Schedule of Committee and Council Meetings (Attachment 1) for the period February 2014 to December 2014.

Moved:

Seconded:

Vote:

Attachment 1

Proposed Schedule of Committee and Council Meetings for the Period February 2014 to December 2014

All meetings commence at 6.30pm with the exception of the Ordinary Council Meeting 15 December 2014 which is at 6.00pm.

January 2014

No Meetings Scheduled

February 2014

Monday 10	Development & Infrastructure Services Committee
Monday 17	Corporate & Community Services Committee
Monday 24	Ordinary Council Meeting

March 2014

Monday 10	Development & Infrastructure Services Committee
Monday 17	Corporate & Community Services Committee
Monday 24	Ordinary Council Meeting

April 2014

Monday 14	Development & Infrastructure Services Committee
Tuesday 22	Corporate & Community Services Committee
Monday 28	Ordinary Council Meeting

May 2014

Monday 12	Development & Infrastructure Services Committee
Monday 19	Corporate & Community Services Committee
Monday 26	Ordinary Council Meeting

June 2014

Monday 09	Development & Infrastructure Services Committee
Monday 16	Corporate & Community Services Committee
Monday 23	Ordinary Council Meeting

July 2014

Monday 14	Development & Infrastructure Services Committee
Monday 21	Corporate & Community Services Committee
Monday 28	Ordinary Council Meeting

August 2014

Monday 11 Development & Infrastructure Services Committee
Monday 18 Corporate & Community Services Committee
Monday 25 Ordinary Council Meeting

September 2014

Monday 08 Development & Infrastructure Services Committee
Monday 15 Corporate & Community Services Committee
Monday 22 Ordinary Council Meeting

October 2014

Monday 13 Development & Infrastructure Services Committee
Monday 20 Corporate & Community Services Committee
Monday 27 Ordinary Council Meeting

November 2014

Monday 10 Development & Infrastructure Services Committee
Monday 17 Corporate & Community Services Committee
Monday 24 Ordinary Council Meeting

December 2014

Monday 01 Development & Infrastructure Services Committee
Monday 08 Corporate & Community Services Committee
Monday 15 Ordinary Council Meeting

Declaration of financial / conflict of interests to be recorded prior to dealing with each item.

72. Reinstatement of Community Safety and Crime Prevention Advisory Committee

Previous Items	Community Safety and Crime Prevention Plan 2013 - 2018
Responsible Officer	Chief Executive Officer
Service Area	Community Development
File Reference	CO-CCS-073
Applicant	N/A
Owner	N/A
Attachment 1	Revised Terms of Reference
Attachment 2	Existing Terms of Reference

PURPOSE

1. To endorse the updated Terms of Reference for the Community Safety and Crime Prevention Advisory Committee.
2. To consider nominations received and appoint representatives to the Community Safety and Crime Prevention Advisory Committee.

BACKGROUND

3. During the first half of 2011/12 the existing Community Safety and Crime Prevention Advisory Committee rarely met due to membership attrition and difficulty in achieving a quorum.
4. The following factors compounded this situation further:
 - A number of the Residents Associations comprising this Committee became defunct during this period, with the existing membership restricted to such prescribed groups.
 - Federal funding supporting the administration of the Community Safety and Crime Prevention Portfolio ceased.
 - The regionalised Community Safety and Crime Prevention Plan 2007 – 2010 reached its expiry.
5. Whilst never formally withdrawn, the Community Safety and Crime Prevention Advisory Committee has ceased to function in practice since February 2012.
6. Initial consultative work was undertaken with attending members of the Community Safety and Crime Prevention Advisory Committee during the first half of 2011/12 to develop a localised plan.
7. Following this the Plan was further developed into a final version in 2012/13 for presentation at the Ordinary Meeting of Council on 26 August 2013, where it was resolved (OCM 111/2013) to endorse the Community Safety and Crime Prevention Plan 2013 – 2018 (the Plan).

8. The Plan states that the Shire of Kalamunda Community Safety and Crime Prevention Advisory Committee is to meet and have a strong role in the continual review, development and implementation of the Plan. Relating to this, the following specific actions were endorsed:
- A review of the Terms of Reference
 - A review of the membership

DETAILS

9. The Terms of Reference have been reviewed to ensure they are aligned to the Plan and for the membership criteria to more accurately reflect the organisations and/or individuals eligible for representation.
10. The existing Terms of Reference are attached for information (Attachment 1).
11. The proposed Terms of Reference (Attachment 2) include more accurate references to the Plan and updates the listing of organisations and/or individuals eligible for membership, using more generic terminology.
12. Under the new Terms of Reference, the Advisory Committee is to be made up of seven (7) members including one (1) representative nominated by each of the following stakeholders:

- Shire of Kalamunda Elected Member
- WA Police (Forrestfield)

And up to five (5) representatives selected from nominations received from, but not restricted to, the following types of organisations:

- State Government departments
- Chambers of Commerce
- Residents Associations
- Community Groups
- Interested Residents

13. Nominations have been received from:

Nominee	Organisation
Snr Sgt Walter Brierley	WA Police (Forrestfield)
Jennifer Dass	Interested Resident
Peter Goodall	Lesmurdie & Districts Community Association Inc.
Sara Lohmeyer	Interested Resident
Aleisha Nunn	Department of Housing
Harvey Reeves	Interested Resident

Councillor Sue Bilich was elected as the Shire representative at the Special Council Meeting of 21 October 2013.

STATUTORY AND LEGAL CONSIDERATIONS

14. Section 5.11 (2)(d) of the *Local Government Act 1995* – Tenure of Committee Membership.

POLICY CONSIDERATIONS

15. Nil.

PUBLIC CONSULTATION/COMMUNICATION

16. A call for Community Representation was advertised in local newspapers at the end of October 2013. Flyers were distributed at all Shire buildings and information/forms were available on the Shire's website. The nomination period of 21 days closed on 22 November 2013.

COMMUNITY ENGAGEMENT REQUIREMENTS

17. Nil.

FINANCIAL CONSIDERATION

18. Nil.

STRATEGIC COMMUNITY PLAN

Strategic Planning Alignment

19. *Kalamunda Advancing: Strategic Community Plan to 2023*

OBJECTIVE 1.5 – To provide a safe environment for the entire community to enjoy.

Strategy 1.5.2 Develop, implement and review the Shire's Community Safety & Crime Prevention Plan.

OBJECTIVE 1.8 – Support local community groups to grow, prosper and shape the future of Kalamunda.

Strategy 1.8.1 Provide leadership and assistance to local community groups and organisations.

SUSTAINABILITY

Social Implications

20. Community representation on Management and Advisory Committees is integral to ensuring a link is maintained between Shire operations and community aspirations.
21. All members of our community can enjoy a safe and secure environment in which to live, work and play.

Economic Implications

22. Nil.

Environmental Implications

23. Nil.

RISK MANAGEMENT CONSIDERATIONS

24.	Risk	Likelihood	Consequence	Action/Strategy
	Committee goals do not align with Shires objectives and strategies	Low	Low	Provide ongoing guidance to the Committee and communicate the Shire's strategic plan and objectives

OFFICER COMMENT

25. It is important that the Terms of Reference for the Community Safety and Crime Prevention Advisory Committee are current, relevant and meaningful.
26. Membership of the Committee should be open to diverse groups, organisations and individuals, with eligibility based on community interest, knowledge and experience of nominated representatives.
27. The wards of the Shire are represented with nominations received from Forrestfield, High Wycombe, Lesmurdie and Kalamunda in addition to that of key representation from the WA Police and the Department of Housing.
28. The Community Safety and Crime Prevention Advisory Committee will provide further support in monitoring and guiding the direction outlined within the Community Safety and Crime Prevention Plan 2013 – 2018.

Voting Requirements: Absolute Majority

OFFICER RECOMMENDATION (C&C 72/2013)

That Council:

1. Adopt the proposed Terms of Reference for the Community Safety and Crime Prevention Advisory Committee.
2. Accept and endorse the following six nominations to the Community Safety and Crime Prevention Advisory Committee:
 - Snr Sgt Walter Brierley
 - Jennifer Dass
 - Peter Goodall
 - Sara Lohmeyer
 - Aleisha Nunn
 - Harvey Reeves

Moved:

Seconded:

Vote:

Attachment 1

Shire of Kalamunda Community Safety & Crime Prevention Advisory Committee



Terms of Reference

1. Name

The name of the Committee shall be Community Safety & Crime Prevention Advisory Committee.

2. Objectives

- 2.1. To consider issues relevant to the implementation of the Community Safety & Crime Prevention Plan (CSCPP).
- 2.2. To provide advice and recommendations to Council based on local community safety and crime prevention needs.
- 2.3. To liaise and consult with relevant agencies, individuals and community groups that will assist in the implementation of the CSCPP.
- 2.4. To monitor and review the strategies and actions adopted as part of the CSCPP.

3. Membership

3.1 Advisory Committee to be made up of seven (7) members including one (1) representative nominated by each of the following stakeholders:

- Shire of Kalamunda Elected Member
- WA Police (Forrestfield)

And up to five (5) representatives selected from nominations received from, but not restricted to, the following types of organisations:

- State Government departments
- Chambers of Commerce
- Residents Associations
- Community Groups
- Interested Residents

3.2 The Presiding Person and Deputy Presiding Person shall be appointed from the body of the Committee.

3.3 The Shire will appoint a non-voting staff member to the group who will act as Secretary.

3.4 Members will be appointed by the Council for a 2 year term and Council may elect to reappoint any or all members for a further term.

4. Meetings

- 4.1 The group shall meet at least twice in any twelve (12) months.
- 4.2 A quorum shall consist of at least one half of the appointed members being present.
- 4.3 An agenda and notice of meeting being distributed by Council at least 7 days prior to each meeting.
- 4.4 It is important that Agenda items, along with any supporting papers are sent to the Secretary no later than 10 days prior to meeting. This allows time for members to consider the item and make an informed decision.
- 4.5 If there are no agenda items the Secretary in consultation with the Presiding Person will advise all members that the scheduled meeting is cancelled.
- 4.6 Late Agenda/Business items may be accepted for consideration by the Committee.
- 4.7 The Councillor appointed to the group is empowered to rule that any matter under consideration is to be referred, via the appropriate Committee, to Council for a decision.

5. Minutes

- 5.1 A Shire of Kalamunda staff member will act as Secretary for the Committee.
- 5.2 The Secretary shall keep Minutes of all business transacted at all meetings and shall forward a copy of these Minutes to members within 10 days of each meeting.

6. Voting

- 6.1 Each appointed member present shall have one (1) vote. The Presiding Member will have a casting vote in the event of a tie.

Attachment 2

Shire of Kalamunda Community Safety and Crime Prevention Advisory Committee



Terms of Reference

1. Name

The name of the Committee shall be Community Safety and Crime Prevention Plan Advisory Committee.

2. Objectives

- 2.1. To consider issues relevant to the implementation of the Community Safety and Crime Prevention Plan (CSCP).
- 2.2. To provide advice and recommendations to Council, based on local community safety and crime prevention needs.
- 2.3. To liaise and consult with relevant agencies, individuals and community groups that will assist in the implementation of the CSCP Plan.
- 2.5. To monitor and review the strategies and actions adopted as part of the CSCP Plan.

3. Membership

- 3.1. Advisory Committee to be made up of 7 members including one representative nominated by the following stakeholders:
 - WA Police Service (Kalamunda/Forrestfield)
 - Kalamunda Chamber of Commerce
 - Forrestfield Residents Association
 - Wattle Grove Residents Association (Inc)
 - High Wycombe Community Association
 - Lesmurdie Ratepayers Association (Inc)
 - Shire of Kalamunda Elected Member
- 3.2. The Presiding Person and Deputy Presiding Person shall be appointed from the body of the Committee.
- 3.3. The Shire will appoint a non-voting staff member to the group who will act as the Secretary.
- 3.4. Members will be appointed by the Council for a 2 year term and Council may elect to reappoint any or all members for a further term.

4. Meetings

- 4.1 The group shall meet at least twice in any twelve (12) months.
- 4.2 A quorum shall consist of at least one half of the appointed members being present.
- 4.3 An agenda and notice of meeting being distributed by Council at least 7 days prior to each meeting.
- 4.4 It is important that Agenda items, along with any supporting papers are sent to the Secretary no later than 10 days prior to meeting. This allows time for members to consider the item and make an informed decision.
- 4.5 If there are no agenda items the Secretary in consultation with the Presiding Person will advise all members that the scheduled meeting is cancelled.
- 4.6 Late Agenda/Business items may be accepted for consideration by the Committee.
- 4.7 The Councillor appointed to the group is empowered to rule that any matter under consideration is to be referred, via the appropriate Committee, to Council for a decision.

5. Minutes

- 5.1 A Shire of Kalamunda staff member will act as Secretary for the Committee.
- 5.2 The secretary shall keep Minutes of all business transacted at all meetings and shall forward a copy of these Minutes to members within 10 days of each meeting.

6. Voting

- 6.1 Each appointed member present shall have one (1) vote. The Presiding Member will have a casting vote in the event of a tie.

Declaration of financial / conflict of interests to be recorded prior to dealing with each item.

73. Amendment to Local Planning Scheme No. 3 – Modification to the Car Parking Requirement for Shops

Previous Items	Nil
Responsible Officer	Director Development Services
Service Area	Development Services
File Reference	PG-LPS-003
Applicant	Shire of Kalamunda
Owners	N/A

PURPOSE

1. To consider whether to initiate an Amendment to Local Planning Scheme No. 3 (the Scheme) to modify the car parking requirement under Table 3 (Parking Requirements) for the use 'Shop'.

BACKGROUND

2. In August 2011, the Shire commissioned a parking study for the Kalamunda Town Centre, with a view to develop a strategy to manage parking provision in the town centre. The study quantified current parking demand for the town centre and estimated parking demand associated with the potential development of the town centre.
3. Council has previously considered a number of requests for a reduction in the amount of car parking bays required under the Scheme for commercial development particularly in the Kalamunda Town Centre.
4. The Shire has investigated and provided a comparison to Council of the parking requirements of other local authorities in respect to commercial development.

DETAILS

5. It is proposed to modify the car parking requirement stipulated under Table 3 (Parking Requirements) of the Scheme for the use 'Shop' from 7 bays per 100sqm of net lettable area (NLA), to 5 bays per 100sqm of NLA.
6. The amendment seeks to allow for a parking standard in commercial areas, particularly shop development, which is more reflective of industry standards.

STATUTORY AND LEGAL IMPLICATIONS

7. Clause 5.8.1 (Parking Specifications) of the Scheme stipulates that a person shall not develop or use any land or erect, use or adapt any building unless car parking bays as specified in Table 3 are provided.
8. Clause 5.8.2 of the Scheme stipulates that Council may, at its discretion, apply a greater or lesser requirement for parking than that stipulated in the Scheme, if the proposed use is likely to demand a greater or lesser need for car parking bays, having regard to the scale and nature of the intended use.

9. Clause 5.8.4 (Cash in Lieu of Parking) of the Scheme allows for consideration for a lesser amount of prescribed parking subject to the applicant contributing to the acquisition and development of land for public parking.
10. The *Town Planning Regulations 1967* establish procedures relating to amendments to local planning schemes. If Council decides to initiate the proposed amendment, then ultimately the amendment will be determined by the Minister for Planning.

POLICY IMPLICATIONS

State Planning Policy 4.2 – Activity Centres for Perth and Peel

11. The main purpose of State Planning Policy 4.2 – Activity Centres for Perth and Peel (the Policy), is to specify broad planning requirements for the planning and development of new activity centres and the redevelopment and renewal of existing activity centres in Perth and Peel.
12. The Policy is mainly focused on the distribution, function, broad land use and urban design criteria of activity centres and the coordination of land use and infrastructure planning.
13. The Policy states the following with regard to providing car parking within activity centres:
 - *“Promote an efficient supply of car parking by a suitable allocation of on-street, off-street public and shared parking including cash-in-lieu and reciprocal / shared use arrangements;*
 - *Prioritise access by different users and modes. eg. central locations for short-stay parking with commuter and other long-stay parking near the edge of centres;*
 - *Enable most parking in higher-order centres to be supplied in the form of public or common user facilities rather than reserved for a class of users. eg. customers of a particular site or business.”*
14. As a guide the Policy states that a maximum of 4 to 5 bays per 100sqm for shops may be required in activity centres. The Policy also states that there should be flexibility for developers to provide less or no parking on site and contribute cash-in-lieu.

COMMUNITY ENGAGEMENT REQUIREMENTS

15. The *Town Planning Regulations 1967* establish the procedures relating to amendments to local planning schemes. If Council decides to approve the amendment, then ultimately it will be determined by the Minister for Planning. If the matter proceeds to the Minister’s determination, there is no Right of Review (appeal), irrespective of the Minister’s decision.
16. Should Council initiate the amendment, the formal advertising (which will last 42 days) will involve a local public notice in a paper circulating the District.

FINANCIAL CONSIDERATION

17. Nil.

STRATEGIC COMMUNITY PLAN

Strategic Planning Alignment

18. *Kalamunda Advancing: Strategic Community Plan to 2023*

OBJECTIVE 4.1 - To ensure the Shire's development is in accord with the Shire's statutory and legislative obligations and accepted urban design planning standards.

Strategy 4.3.1 Provide efficient building and development approval services to the community.

SUSTAINABILITY

Social Implications

19. Nil.

Economic Implications

20. Providing a more flexible approach to development standards will encourage investment within the Shire, particularly in the Kalamunda Town Centre and the Forrestfield District Centre.

Environmental Implications

21. Nil.

RISK MANAGEMENT CONSIDERATIONS

22.

Risk	Likelihood	Consequence	Action/Strategy
Council may resolve not to initiate the amendment	Unlikely	Minor	Ensure Council is aware that the proposal is compliant with the State Planning Policy and more reflective of other local authorities.

OFFICER COMMENT

23. Perceptions of parking, particularly in the Kalamunda Town Centre have been a contentious issue for some time. The current Scheme requirements for retail or shop development are considered by many to be onerous and not reflective of the minimum parking standards set by other local authorities.

-
24. State Planning Policy 4.2 indicates that parking within activity centres (Kalamunda Town Centre and Forrestfield District Centre) should as a rule set upper limits to parking in view of opportunities for reciprocal and shared parking, and availability of on street parking. As a guide a parking standard of a maximum of 4 -5 bays per100sqm should be established. This suggests the current Scheme requirement of a minimum 7 bays per 100sqm NLA is excessive by comparison.
 25. The higher end of the 4-5 bays per 100sqm NLA should be contemplated, as in commercial centres throughout the Shire, public transport and housing are not yet developed to the same intensity as other urban centres in Perth, giving rise to a potentially higher dependence.
 26. The parking study undertaken for the Kalamunda Town Centre revealed that parking demand is less than the number of bays provided in the town centre. Maximum occupancy for off road parking was 56% with on street parking reaching 69%. These figures suggest that the parking rates in the Scheme are not reflective of demand for parking in the Kalamunda Town Centre.
 27. To ensure current Scheme parking requirements are not seen as an impediment to commercial development in the Shire, a holistic approach to the issue is proposed. In addition to the proposed Scheme amendment, the Shire will be developing a Local Planning Policy on cash in lieu of parking and a Local Planning Policy on circumstances where Council will consider a reduction in Scheme car parking rates.
 28. It is acknowledged that locating parking in Kalamunda on the Saturday Market days can take some time. However, from a town centre amenity perspective, consideration should be given to developing alternative solutions and options for this single day event each month, rather than developing an oversupply of parking throughout the Shire.
 29. The proposed modified car parking requirement for shops is considered consistent with the Policy, more reflective of industry standards and should be viewed in the context of the Shire adopting a more holistic approach to the issue of parking in commercial areas. Importantly, the proposal will allow for a more meaningful and flexible approach to the provision of car parking bays for retail development.

Voting Requirements: Simple Majority

OFFICER RECOMMENDATION (C&C 73/2013)

That Council:

1. Initiates the amendment to Local Planning Scheme No. 3, in accordance with the following:

PLANNING AND DEVELOPMENT ACT 2005
RESOLUTION DECIDING TO AMEND A LOCAL PLANNING SCHEME
SHIRE OF KALAMUNDA
LOCAL PLANNING SCHEME NO. 3
AMENDMENT NO.

Resolved that Council, in pursuance of Part 5 of the *Planning and Development Act 2005*, amends the above Local Planning Scheme as follows:

- (a) Modify Table 3 (Parking Requirements) by deleting the current car parking requirements for the use 'Shop' and replace with the following:

"5 bays per 100sqm of NLA."

The amendment documents being adopted by Council and the Amendment being formally advertised for 42 days in accordance with the provisions of the *Town Planning Regulations 1967*, without reference to the Western Australian Planning Commission.

Moved:

Seconded:

Vote:

10.0 MOTIONS OF WHICH PREVIOUS NOTICE HAS BEEN GIVEN

11.0 QUESTIONS BY MEMBERS WITHOUT NOTICE

12.0 QUESTIONS BY MEMBERS OF WHICH DUE NOTICE HAS BEEN GIVEN

12.1 Item 63 – Debtors and Creditors Reports for the Period Ended 31 October 2013

Q1. A Councillor queried that given the cost to provide bus services for Walk the Zig Zag event exceeded \$5000.00, were 3 verbal or written quotes sought?

A1. As per the Purchasing Policy, two verbal quotes are required, the Shire received three and the decision was made based on the price.

Q2. A Councillor enquired on the estimated number of attendees to the Walk the Zig Zag Event and the Zig Zag Festival.

A2. The attendance for the Walk the Zig Zag was just over 5500 and the Zig Zag Festival was approximately 9000 people.

12.2 Cr Frank Lindsey – Update regarding Waste Disposal Strategy

Q. Can we please have an update on where the Engineering Department is currently situated with implementing the Waste Disposal Strategy that was endorsed earlier this year? In particular, the recycling of compost and wood chips onto council verges, parks and gardens?

A. Manager Infrastructure Operations will make a presentation on the status of the waste strategy, including the green waste services and skip bins, in February 2014.

12.3 Cr Geoff Stallard – Update on use of skip bins within the Shire

Q. Can we have an idea on how we are going with using the skip bins within the Shire?

A. Manager Infrastructure Operations will make a presentation on the status of the waste strategy, including the green waste services and skip bins, in February 2014.

12.4 Cr Andrew Waddell – Update on Foothills Learning Centre

Q. Can we please have an update on the status of the Foothills Learning Centre as a phone call was made from a staff member at the centre advising that they have no hot water, no keys for the back door and no keys for the shed? They are concerned about the fire risk on the verge and the general maintenance of the building.

A. The building occupied by Foothills Learning Centre has been assessed as unsuitable for long term occupation due to its age and a number of non-compliance issues. It has therefore been earmarked for rationalisation during 2013/14, with the freehold land to be utilised for residential development.

It is proposed to rehouse the group in another shire building with the suitability of the High Wycombe Recreation Centre currently being ascertained with the group.

The Foothills Learning Centre were advised by letter on 26 November 2012 of all the issues with the building, including access not being available through the rear door.

In view of the uncertain future of the building, maintenance is minimal, however the following issues are currently being addressed:

- Gas bottles for the hot water system were reinstalled 3 December 2013
- General clean-up of leaves and brush cutting of side fence programmed in the week commencing 2 December 2013
- The key for the shed will be re-issued

The Foothills Learning Centre are currently occupying the building without any formal agreement and are paying no rent/lease fee.

12.5 Cr Andrew Waddell – Ollie Worrell Reserve

Q. Can you please advise when maintenance is scheduled for the reserve? Is there a way that a list can be obtained for scheduled maintenance on this and other reserves?

A.

Parks & Gardens Maintenance Schedule	
Ollie Worrell Reserve (Category 2)	
Work Activity	Frequency
Tractor Mowing	Fortnightly (Weeks 2 & 4)
Hand Mowing	Fortnightly (Weeks 2 & 4)
Reticulation System	Weekly (System checks)
Turf Renovations (Coring & Vertimow)	Yearly (August/September)
Weed Spraying (Broadleaf)	Yearly
Playground Safety Inspections	6 monthly

A further report on the maintenance schedule for all Shire Reserves will be provided at the Development & Infrastructure Services Committee meeting in February 2014.

12.6 Cr Andrew Waddell – Council Policy for infringement for lapsed dog licences

Q. Can our policy for infringement for lapsed dog licences please be explained?

A. The Shire has a zero tolerance on lapsed dog registrations and are currently reviewing this to bring a policy back to Council in February and for Council to decide on what the policy will be.

12.7 Cr Simon Di Rosso – Public Access Way, Wilson Place, Gooseberry Hill

Q. Can the public access way at the end of the cul-de-sac on Wilson Place Gooseberry Hill be tidied up?

A. The public access ways in this precinct were completed in October, including moving, whipper-snipping and pathway pruning. Following a further inspection of the public access way, minor pruning has been programmed for week commencing 2 December 2013. Due to the unseasonal rains in October and the dry spell in November there has been significantly more growth than normal and this has impacted on the maintenance schedules. Staff are working to catch up on open space maintenance, however it has been noted that revisits to some areas due to the increased growth is needed.

12.8 Cr Simon Di Rosso – Dry bushland at the end of East Terrace

Q. There is a large area of bushland behind the primary school, is that owned by the school and therefore, not something we can assist with or is there some plan in place to deal with this?

A. The reserve next to the school on East Terrace is on the list of bush reserves that are maintained annually as part of the fire break clearance program. This work has been done including the strip of land between the school and the properties on Boonooloo Road.

13.0 URGENT BUSINESS APPROVED BY THE PERSON PRESIDING OR BY DECISION

14.0 MEETING CLOSED TO THE PUBLIC

15.0 CLOSURE