

CONNECT

Winter 2017 Edition 2

In this edition

- Budget Highlights
- City Status
- Kalamunda Advancing
- Your Rates Notice
- Hockey Upgrade
- What's On



Message from the Mayor

Welcome to the second edition of Kalamunda Connect and our first as the City of Kalamunda.

There have been many comments from community and stakeholders coming to us around the change in status. Specifically what it means and how it will affect what we know and love about where we live.

Perhaps this is one of the most significant questions we need to grapple with, what makes a place liveable?

My take on liveability is one of connectedness. I think the latter part of the 20th Century and the early part of this one, have robbed communities of a place to come together, to meet, to collaborate and to simply talk. In a race to make sure everyone had access to big box stores, we lost the concept of neighbourhoods.

Now technology has gone a long way to replacing the need for large shopping centres and has begun to reconnect us with lost friends and communities of interest, we need

to find ways to once again connect with those who live around us. With the adoption of our new Strategic Community Plan we now embark on a new era, as a City, with a vision focused on connecting our community and ensuring people from all walks of life can enjoy the various aspects of what makes the City of Kalamunda a great place to live, work and play - a sustainable, ecological and family-friendly place to be and a destination to visit and enjoy.

You will see throughout this newsletter, highlights from the adopted 2017/2018 Annual Budget that starts us off on the right foot toward this more liveable future.

The Budget has been built on delivering better services to our community, while responsibly taking into account the tough economic conditions all West Australians are facing.

We've continued on a path of sustained growth and maintenance of our infrastructure with the desire to keep rate increases to a minimum.

The current financial environment also remains challenging as we look to manage external impacts and start to build working relationships with a new State Government, who have already announced changes to the cap amounts for local government rates, underground electricity connection charges, and water rates for WA Seniors Card holder households.

In response, we are looking closely at our activities and will focus on introducing efficiencies in the way we conduct business and grow alternative revenue streams, while also seizing opportunities as a City to advocate more strongly than ever, to all levels of Government to leverage additional funding prospects.

Councillors and staff have also worked hard to ensure a modest rate rise of 2.0% for the General Residential category – to balance the overall impacts on ratepayers without compromising delivery of a significant Capital Works Program with substantial investment in our roads, buildings, parks and ovals.

I wish to commend the work the administration has done to produce a comprehensive and responsible budget and let you know Council is excited about the many new projects and initiatives being delivered to achieve the vision of our community.

Please take the time to read Kalamunda Connect, to fully understand where your rates go and how we invest in the community to ensure you and your family have access to dozens of services and facilities and enjoy living in Kalamunda. Get your early bird payments in to win your share of some great prizes in this year's rates prize draw.



Andrew Waddell
Mayor

Connect with us



**Sign up to our FREE
monthly e-news!**

Please note our new email enquiries@kalamunda.wa.gov.au. All other contact details remain the same.



Kalamunda Advances



The City of Kalamunda has adopted its new 10 Year Strategic Community Plan, Kalamunda Advancing, with a new vision connected communities, valuing nature, creating our future together. We are focused on advocating to different levels of government and delivering high quality value for money services to the community.

Priority areas for the coming years include investing in infrastructure to improve our road network, building shared paths, and improving recreation facilities and community hubs to connect communities; looking after the natural environment through the continued development and implementation of our Local Environment and Biodiversity Strategy and engagement with the community and agricultural industry, in pursuit of proactive

outcomes for the rural sector. There is also a strong focus on improving community engagement processes to allow for a broader range of opinions to assist us in moving our community forward; reviewing and simplifying the Local Planning Scheme to make it more user-friendly and easier to understand for our customers, and improving our technology footprint to simplify interactions between customers and the administrative organisation. The Strategic Community Plan is the highest level plan the Council prepares.

The City will use this plan to structure its business activities and develop specific guiding plans, resourcing plans and other informing strategies. Copies of the plan are available online: www.planthefuture.com.au

City Status Achieved

The Department of Local Government officially designated the Shire of Kalamunda, a City as of 1 July, accurately reflecting the local government's population size and land uses in the region.

A local government area is eligible for City Status when it has more than 30,000 residents, with more than half living in an urban area. In Kalamunda we have over 60,000 people and 75% of those live in an urban environment.

Benefits to being a City include:

- better reflecting, and potentially improving our standing with those involved in future development, both private and government, as our projected housing growth and

- infrastructure projects like the Forrestfield North take shape;
- making us more competitive and attractive to investors, signaling we are progressive;
- accurately reflecting the urban growth where the majority of the future population and land use changes will be;
- showing we are an intrinsic and important part of the Perth metropolitan area, and part of the emerging Perth aerotropolis.
- indicating we are autonomous and a sustainable local government in our own right.

For more information go to: www.kalamunda.wa.gov.au/ourstory

Budget Highlights

Park projects:
\$3,282,177

- Hartfield Park – Hockey fields
- Jacaranda Springs Reserve
- Stirk Park Masterplan
- Bibbulmun Track Terminus Link
- Trails Loop Implementation
- Scott Reserve Reticulation
- Alan Anderson Park Restoration

Building projects:
\$4,185,317

- Jorgensen Park Community Centre - Design
- Hartfield Park – hockey clubrooms
- Forrestfield Skate Park Toilet Block
- Kalamunda History Village – Locomotive restoration
- Pickering Brook Sports Club – roof replacement
- Ray Owen Recreation Reserve – power upgrade

Major road construction projects:
\$8,230,899

- Wittenoom Rd Traffic Calming
- Wandoo Rd Traffic Treatments
- Abernethy Rd/Grogan Rd Intersection
- Kalamunda Rd/Newburn Rd
- Adelaide Street Traffic Treatments
- Mundaring Weir Rd Reconstruction
- Canning Rd Traffic and Pedestrian Treatment
- Canning Rd – Pomeroy Rd to Welshpool Rd East
- Canning Rd – Kalamunda Rd to Recreation Rd
- Abernethy Road – Design and Approvals for railway extension Dual Carriageway Design
- Patterson Rd – Reconstruct and widen

Major drainage:
\$1,822,071

- Kalamunda Town Centre



Forrestfield North Consultation Success

Following our series of community engagement workshops held with landowners and community and the online survey delivered in June, our consultants TPG Planning and the City's in-house planning team are busy collating all the great ideas and feedback received to help shape the new Forrestfield North area.



In the coming weeks an outcomes report will be published on our website where you can see exactly what was discussed and shared through these forums. The outcomes will feed into the development and drafting of more detailed Local Structure Plans. These plans will guide just about every part of the project including the location of parks, shops and offices, sizes of buildings, width of roads, areas to develop, areas to conserve, and areas of opportunity. We can't wait to show you how we've incorporated many ideas for Perth's newest growth area, comprising some of the last and ideally located urban land in the

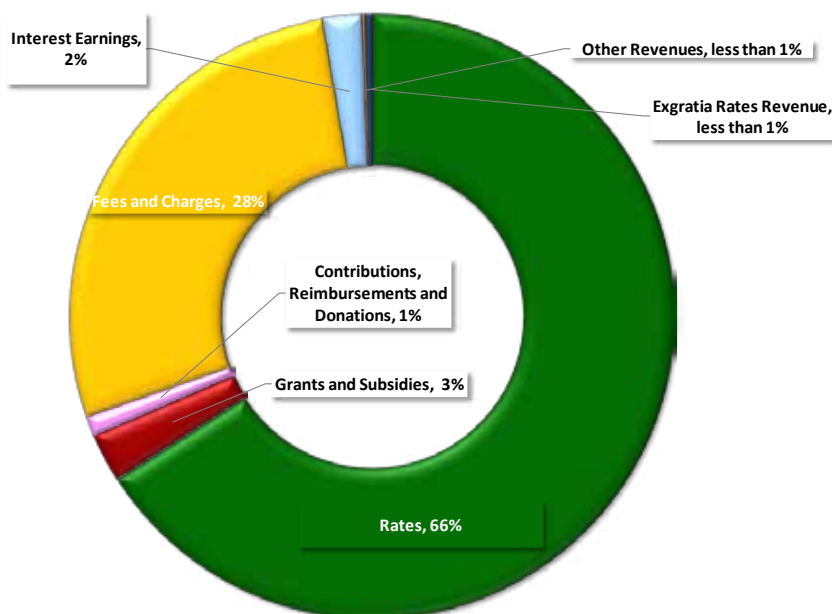
metro region. Moving forward there will also be plenty more opportunities to have your say, with public advertising on the more detailed draft plans due to begin later in the year. The Forrestfield North area demands a lot of technical and engineering studies before anything can be built or developed – such as new sewer mains, upgraded roads, new drainage infrastructure and more. Designing and constructing new infrastructure is always a challenge, but we've already got some good input on how to deliver these vital works.

Mayor Andrew Waddell said, "I had the privilege of attending a

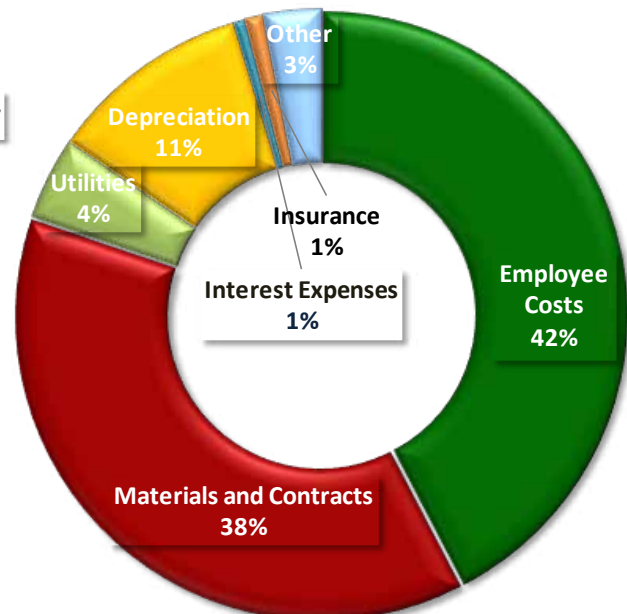
community workshop where many residents took the opportunity to throw up some of their ideas around what a new suburb might look like. We will certainly need a unique approach to attract investment, especially in the current market to stand out from developments in the north and south coastal growth corridors. By actively driving investment, we can be more confident in getting the best outcomes rather than a carbon copy suburb. This may even need to include a new name for the suburb, specific branding and a focus on the values and objectives the community wants to see there."

2017/2018 Budget at a Glance

Operating Revenues by Nature or Type



Expenditure by Nature or Type



High Wycombe Recreation Centre 24/7 Gym

The High Wycombe Community and Recreation Centre is set to become a 24/7 gym, giving current and new members more flexibility on when they wish to exercise. The move will also reduce some of the current overhead costs, with the facility transitioning to an unstaffed centre.

All junior programs, the popular Kids Cooking Club each school holidays and group fitness classes will continue as normal.

Council supported the inclusion of a \$102,000 allocation within the 2017/2018 Budget to provide 24/7 accessibility to the gymnasium, and to purchase new equipment.

The Centre is a valuable community asset providing important services such as gym, group fitness classes, junior programs, kids cooking club and casual and permanent hall hire. Building modification works will commence this month and take



about 12 weeks to complete. For more information on recreation in the City go online: www.kalamunda.wa.gov.au.

Road Safety Improvements

The 2017/2018 Budget has a significant focus on capital works with several road construction projects. The City is undertaking several significant road upgrades to improve road safety in High Wycombe in the coming year.

The Kalamunda Road and Newburn Road roundabout is getting a \$181,620 upgrade to improve the intersection. The project is part funded by the State Government's Blackspot program.

Traffic calming measures in the form of chicanes will be installed



in Wittenoom Road and Adelaide Street. Chicanes encourage drivers to slow down and take more care.

The intersection of Abernethy Road and Grogan Road is being widened with the upgrade costing \$216,535.

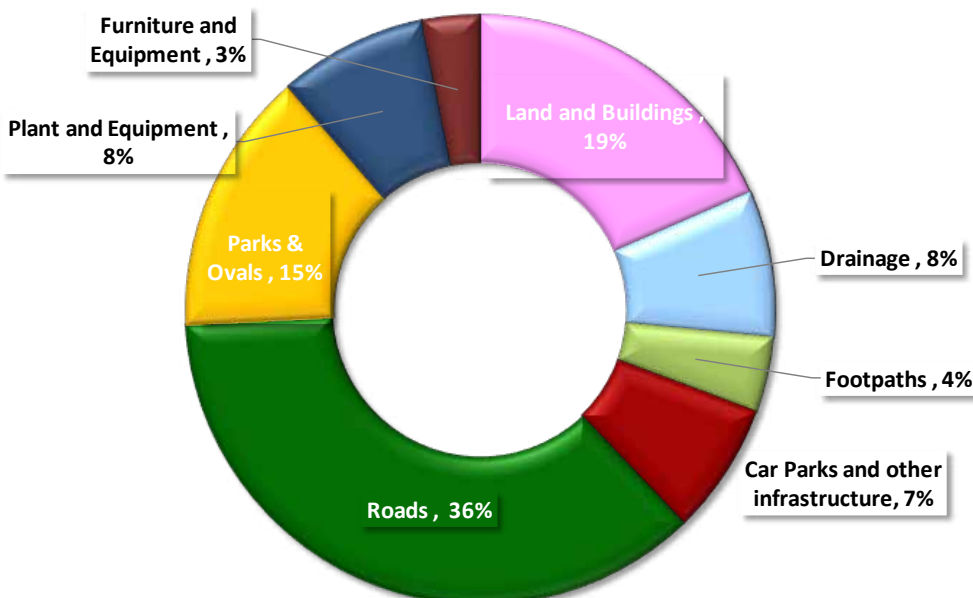
High Wycombe Film Showcase

What do you love about High Wycombe? We want to know! The City of Kalamunda has partnered with the Connect 6057 pilot project in High Wycombe to create three short films about the High Wycombe community. These short films will each tell a different story about High Wycombe, focusing on either the past, the present or the future.

Throughout July and August the City's Youth Team will be filming and interviewing different community members and groups to create the 5-10 minute short films.

If you, your family or your community group is interested in being featured in the High Wycombe Film Project, please contact the Youth Team via email (youth@kalamunda.wa.gov.au) or call 9257 9968. To make it as convenient as possible for you, the Youth Team would come to film you at a place of your choice – perhaps your backyard, workplace or even your favourite spot in High Wycombe. The short film will be screened as part of the City of Kalamunda's Young Creatives Month in September.

Capital Works Program





Jorgensen Park Community Centre



The City of Kalamunda has lodged grant funding submissions to the Department of Infrastructure and Regional Development and LotteryWest, as well as writing to the State Government, for the development of new community facilities at Jorgensen Park, incorporating the Kalamunda Community Learning Centre.

The concept plan has been

developed in consultation with the Kalamunda Community Learning Centre and other potential users of the site. The new premises would be accessible for a wide range of user groups of varying ages and abilities. As a centre for lifelong learning there will be improved support for social and cultural outcomes by users and participants. The proposal promotes intergenerational, social

and educational interaction and the provision of a crèche enables parents to participate. Children will be supported in their early development by the inclusion of a playgroup at the facility. The final location of the site and the design of the facility have not yet been determined and will be subject to further community consultation, when funding is confirmed.

Bibbulmun Track Northern Terminus

Installation of the new Interpretive Trail linking the northern terminus of the Bibbulmun Track to the Zig Zag Cultural Centre and Perth Hills Visitors Centre is nearing completion.

The design of the new designated Trail has a strong indigenous influence, with artists Aurora Abraham and Sharyn Egan collaborating with the project team.

The Interpretive Trail references heritage connections, natural influences and flora and fauna of the region which will be captured in creative street furniture, signage

and paving materials inspired by natural materials, colours and organic forms. To date the footpath has been poured, the feature circles and rockwork have been laid, footings for the interpretive signage rammed earth seating are installed, and the pram ramp and pedestrian grab-rails sleeves are in place.

The project has been supported by Tourism Western Australia through the Tourism Demand Driver Infrastructure program and has involved extensive stakeholder engagement.



The Interpretive Trail is expected to be complete in August and will provide a fantastic start or finish for walkers of the world-famous Bibbulmun Track.

Stirk Park Masterplan



The City of Kalamunda is inviting residents to have their say on the Stirk Park Masterplan. The Masterplan development has entailed an extensive consultation process with over 650 responses via surveys, a workshop and information stall. The draft plan will provide a clear direction and guide the parks sustainable development into the future.

Key elements of the plan include:

- Playground Upgrade
- Youth & Sport Precinct
- Lake Upgrade
- Public Art & Entry Statements
- Sound Shell & Amphitheatre Upgrades
- Promenade Development.

Public comment closes at 5pm on 15 August 2017.

History Village Locomotive Restoration



The City of Kalamunda has allocated funding in the Budget for the remediation of the Kalamunda History Village locomotive. The City has also applied for a LotteryWest Heritage and Conservation grant to offset the costs. The iconic attraction was wrapped in a protective seal in late 2016 following the discovery of asbestos in parts of the train.

Ledger Road Reserve Progress

The City has allocated additional funds in the 2017/2018 Budget to improve Ledger Road Reserve. Forward works for the coming financial year include improving

site coverage, revegetation and stormwater mitigation. Weather permitting these works will start in late 2017 and conclude before the winter rains in 2018.

Once the works have been finalised the many tracks and trails in the Reserve will be reopened for the public to enjoy.

Kalamunda Town Centre Drainage Works

The City of Kalamunda is undertaking a stormwater drainage upgrade in the Kalamunda Town Centre. New drainage will be installed along the top of Kalamunda Road, near Stirk Park, on Canning Road, Haynes Street and Barber Street.

Works have started and are expected to be complete in October 2017. Shoppers are asked to be patient whilst works

are underway. The installation of drainage infrastructure will be followed by the re-construction of the roundabout on Kalamunda Road/Canning Road and reinstatement of affected asphalt, driveways, kerbing and verges all in manageable sections as work progresses.

The planned works will be undertaken within the road reserve and are necessary to increase the

drainage capacity of the existing system and pave the way for future improvements to the Town Centre.

Local roads will be partially closed during different stages of the works. Detours will be in place, with signage to advise community members during those stages of the project. For more information go to www.kalamunda.wa.gov.au/majorprojects.

How to read your rates notice

RATES NOTICE 2017/2018

Tel: (08) 9257 9099 2 Railway Road, Kalamunda WA 6076 Email: rates@kalamunda.wa.gov.au
 Fax: (08) 9293 2715 PO Box 42, Kalamunda WA 6926 Web: www.kalamunda.wa.gov.au

CASHIERS HOURS: 8.30am - 5.00pm Monday to Friday

NOTICE OF VALUATION AND RATE
 Notice is given by the Council of the City of Kalamunda that the land mentioned hereunder of which you are the Owner (or Occupier) is valued and rated as herein specified.

TAX INVOICE ABN 60 741 017 678



city of
kalamunda

ASSESSMENT NUMBER:
A555555
 CUSTOMER REF. NUMBER:
5555555555
 DUE DATE:
16 August 2017
 ISSUE DATE:
11 July 2017
 MINIMUM RATE:
\$865.00
 VALUATION:
\$16,900.00 - GRV

S000001C01 000001 #68293

0000001
 SAM SAMPLE
 55 SAMPLE ROAD
 SAMPLE TOWN SAM 9999

Changes to your Postal Address must be made by emailing rates@kalamunda.wa.gov.au

PROPERTY 555 SAMPLEVILLE ROAD, KALAMUNDA
 DETAILS Lot No: 5 of 55 Ward: SAM

Details	Rate in \$/Charge per Service	Current	Arrears	Total
GRV - General	5.8030	\$980.71		\$980.71
Warr Levy	0.0418	\$20.00		\$20.00
Refuse Svce - Single	1@531.00	\$531.00		\$531.00
Emergency Services Levy (ESL)	0.6629	\$112.03		\$112.03
ESL Category 3 , Property Use Residential , GRV \$16900.00				
GST is nil				
				\$1,643.74

1. This is your Property Assessment Number: please quote this when making enquiries.

2. Your biller code and customer reference number, unique to this property. Please use this when making payments.

3. GRV—The valuation for each property is calculated by the Valuer General and is either a Gross Rental Value (GRV) or Unimproved Value (UV). See Landgate brochure for further information.

4. Rates are calculated by multiplying the Valuation by Rate in the \$. There is a minimum charge (see back of the Rates Notice)

PLEASE NOTE

5. WARR Levy—adopted in 2013/2014 to help fix contaminated sites within the City (see back of Rates Notice)

6. Refuse Service is for the collection of your bin & recycling service (see Waste Brochure)

7. Emergency Service Levy (ESL) is a compulsory charge set by the State Govt calculated on the GRV. All funds raised go to fund DFES/SES.

Penalty interest & ESL interest is charged @ 11% on outstanding

rates and charges and on overdue instalments. Pensioners and seniors are exempt. (see back of the Rates Notice)

Payment Option 1 Full Amount

- Cost of option \$16.12, Total Cost \$1,659.86

Payment Option 2 Two Instalments

\$1,643.74
\$829.96
\$829.90

Payment Option 3 Four Instalments

- Cost of option \$34.80, Total Cost \$1,678.54
\$419.74
\$419.60
\$419.60
\$419.60

Instalments	Due Dates	Amounts
\$1,643.74	16 August 2017	\$1,643.74
\$829.96 \$829.90	16 August 2017 15 December 2017	\$829.96
\$419.74 \$419.60 \$419.60 \$419.60	16 August 2017 16 October 2017 15 December 2017 16 February 2018	\$419.74

PLEASE NOTE:
To qualify for the instalment plan, the City MUST receive the CORRECT amount of the FIRST INSTALLMENT by **16 August 2017**.
The instalment plan will not be available after this date.
Payments and Pensioner Registrations received after the 01/07/2017 are not included in this notice.

9. The Instalment option is **ONLY** available if the correct amount is received by the **"Due Date"**

FOR INFORMATION IN RELATION TO RUBBISH CHARGES ENQUIRIES SHOULD BE DIRECTED TO THE CITY'S WASTE DEPARTMENT ON (08) 9257 9835



eRates

Online Registration
You can now register to receive rate notices electronically by registering your details at www.eratewa.com/kalamunda

INTERIM RATES

Interim rates are charged when there is a change to the property that affects the rental value, e.g. where a house is built/demolished, a pool or room is added/removed or if there is a subdivision.
The City will receive a new value from the Valuer General and is required to issue an Interim Rate Notice in due course.

A SMARTER WAY TO PAY:

A no fuss way to pay rates off over up to a 12 month period via direct debit, on a weekly or fortnightly basis.
The system aims to ease the burden that a lump sum or limited instalment payment program can cause.
To take advantage of this **Smarter Way to Pay**, or for more details please contact the City Rates Department on **9257 9999**.

PAYMENT METHODS

For Credit Card Payments

BILLER CODE: 18465
REF#: 5555555555

INTERNET Visit www.kalamunda.wa.gov.au
PHONE Call 1300 276 468

Pay In Person
at City Office, 2 Railway Road Kalamunda.
8.30am to 5.00pm, Monday to Friday.



These cards accepted via BPOINT & in person at the City Office.

A 0.46% credit card surcharge is effective from 1 July 2017.

iBPAY
Billers Code: 18465
Ref: 5555555555

Telephone & Internet Banking – BPAY®
Contact your bank or financial institution to make this payment from your cheque, savings, debit or transaction account.
More info: www.bpay.com.au

Pay By Mail

Pay by mail to PO Box 42, Kalamunda WA 6026.
Detach this slip and include with cheque made payable to City of Kalamunda.

Please tick box if you wish to receive a receipt.



city of kalamunda

2 Railway Road Kalamunda WA 6076
PO Box 42 Kalamunda WA 6026
Tel: (08) 9257 9999
Fax: (08) 9293 2715
Email: rates@kalamunda.wa.gov.au
Web: www.kalamunda.wa.gov.au



Pay In Person
at any Post Office.

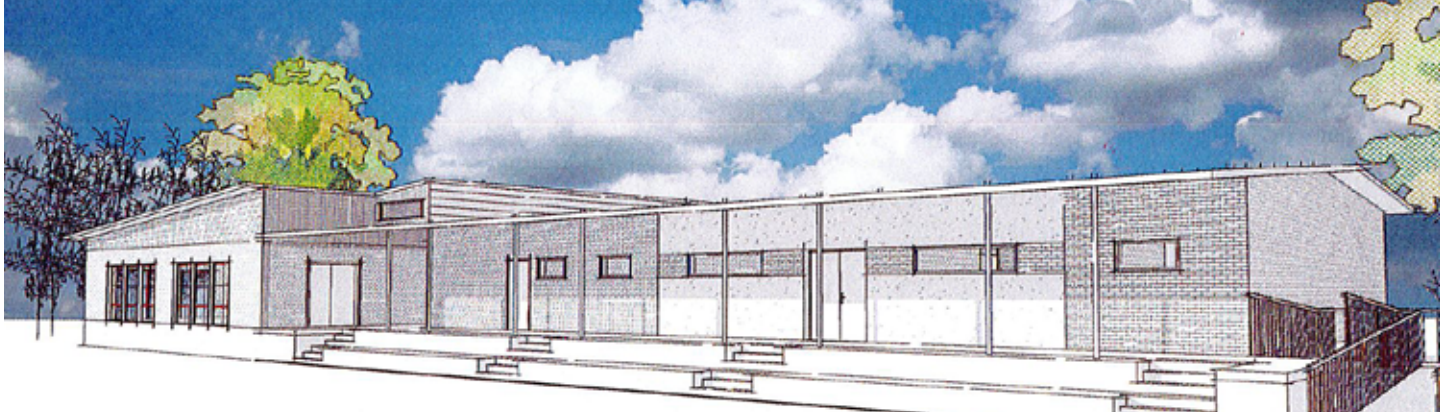


*606 05555555

Please detach here and forward with payment



Hockey Green Light



The City of Kalamunda is set to deliver a brand-new Hockey Facility, on the old Darling Range Pony Club site. The new facility will be the final part of the Hartfield Park Redevelopment. The City has worked closely with Kalamunda and Districts Hockey Club to develop the new space to meet current and future needs of hockey in the region.

Featuring a new clubroom, three new grass fields and lighting this community project was

proudly supported by the State Government of Western Australia as a part of the \$6 million Hartfield Park Redevelopment. The upgrade has included the expansion of Morrison Oval, construction of additional storage, new pathways, upgrades to floodlighting across the Reserve, development of new car parking areas and the implementation of a Managed Aquifer Recharge Project.

To date the project has already had significant benefit to the

Soccer Club, Tee Ball Club, Rugby Clubs, Scouts, the Lawn Bowls and Football Club.

The Managed Aquifer recharge, water harvesting project, is a very special part of the redevelopment which will future proof the site for years to come. Water usage on reserves is a key element to the sustainability of the site. The infrastructure was completed in October 2016, trials and testing will continue in 2017.

Get involved in Young Creatives

In the City of Kalamunda, September is Young Creatives Month! It is a celebration of all things creative, with a range of free activities, workshops and events for young people of all ages. Some of the activities already planned for 2017 include: Art workshops, with young people getting the opportunity to help decorate some of the City's new Street Libraries; An exhibition of local up-and-coming artists aged under 25, including a sundowner VIP exhibition opening; Music workshops; a stand-up comedy

and radio workshop; Smart-phone street photography walks; Yoga in the park and more!

To help plan this jam-packed month of creativity, the City's Youth Team is on the lookout for awesome young people aged 12 – 25 to join their Youth Events Team!

This group of young people will get the opportunity to help shape what events and workshops take place throughout Young Creatives Month, as well as gaining experience in events management



and volunteering at a range of community activities. If you are interested in joining the Team, we would love to hear from you! Get in touch via youth@kalamunda.wa.gov.au, call 9257 9968 or go to The Influence facebook page.

Woodlupine Brook Living Stream



A Concept Plan has been developed to turn the drain along the Woodlupine Brook in Wattle Grove into a Living Stream with resounding positive feedback following extensive community consultation in May. Plans include the development of a new recreational pathway network to provide improved continuous access along the public open

space, open areas of grass for passive recreation, enhancement of existing garden beds, and realignment of the Brook.

Staged construction will start early in 2018, with completion dependent on successful land acquisition. In addition to Cell 9 development contribution funding, the City has secured additional State Natural Resource

Management (NRM) funding to engage volunteers in tree planting along the banks of the stream.

Construction works for the Wimbridge Road extension are complete, with the road expected to officially open in August following the completion of service installation by a private developer at the neighbouring lot.

Forrestfield Skate Park

The popular Forrestfield Skate Park will have new public toilets installed in this financial year, completing the upgrade of the facility.

The Skate Park opened in late 2015 and caters for skateboarders, BMX and scooter riders of all skill levels and ages, whilst incorporating local art and themes into the designs to reflect the rich culture of Kalamunda.

The facility also includes a half court, plenty of shade and playful spectating spaces. The new toilets will be much closer for skaters and Morrison Oval users, their family and friends who had to go to the Recreation Centre previously. The Forrestfield Skate Park is located in the North East corner of Hartfield Park.

Woodlupine Brook Pedestrian Bridge

This exciting project, due to kick off in the coming months, will provide greater access for residents across the Woodlupine Brook. The project was delayed earlier in the year, due to the need to retender. It is now ready to roll following a start-up meeting on 28 June, with the manufacture of the bridge's components in progress. Works are expected to be completed by September 2017.



Wandoo Road Improvements

Wandoo Road in Forrestfield will benefit from intersection improvements, installation of chicanes, an upgrade to stormwater drains and a new footpath connecting homes to Lewis Road.

Works follow on from community consultation undertaken with residents last financial year to determine the best traffic treatments for the stretch of road.



Hills Trails Loop Implementation



An allocation of \$90,000 has been put in this year's budget to commence the Perth Hills Trails Loop Project.

In partnership with the Shire of Mundaring and the Department of Biodiversity, Conservation and Attractions (formerly Department of Parks and Wildlife), the City developed the Perth Hills Trails Master Plan (2013) to guide the

provision of future trails across the Perth Hills over the next 15-20 years.

A key aspect of the Perth Hills Trails Master Plan was to develop a Trails Loop that would create a link between the Kalamunda Town Centre, Pickering Brook, Munda Biddi, Kalamunda Circuit and then back to the Kalamunda Town Centre.

The Perth Hills Trails Loop Concept Design Report was subsequently developed in 2016.

In collaboration with the Kalamunda Mountain Bike Collective, trails along the Railway Heritage Trail from Kalamunda to Pickering Brook will be the first ones improved and linked. For more information contact the City on 9257 9999.

Pickering Brook Sports Club Upgrades

Pickering Brook Sports Club are shouting from the rooftops – and the ovals in this case – following the upgrade of its mowers and tractors on site. The club's volunteers tell us the new equipment has helped to make the arduous mowing task take a third of the time and do a much better job! The equipment, which is used on both the main footy oval and the golf course, was made possible thanks to a \$6,000 grant from the City.

The facility is also set to have a new roof installed over the summer, valued at \$280,000.

Pickering Brook Sports Club is set in the hills looking out over the oval and the trees beyond it offers a truly relaxing atmosphere set away from residences, which



makes it a great place for a party, wedding, corporate function or any celebration, even a family barbecue on the back veranda.

This tranquil setting with social, sporting and function hire facilities makes Pickering Brook Sports Club not only a great location but also

probably the best value in Perth, especially for function hire which is half the price of most comparable venues. The venue offers Golf, Lawn Bowls, Football, Darts, Cricket and Pool.

For more information go to www.pickeringbrooksportsclub.com

Hills Alive with New Venues Opening Doors

Whether it's fresh air, fine food or wine, bush walking or a day spa, treat your senses to a smorgasbord of revitalising things to see, do and enjoy in the Perth Hills.

The City of Kalamunda offers a glorious mix of natural bushland, wildflowers, walk and cycle trails, boutique accommodation, restaurants, wineries, cafés, art galleries and more.

The region is also a drawcard for people who want to live and/or work in the picturesque area and with another new venue opening their cellar doors for meals and wine tasting at Lawnbrook Estate/ The Packing Shed in Bickley.

Other recent food highlights include Mason & Bird opening next to the Visitor Centre, the Carmel Cider Co have started running events (Pork & Cider lunch) and the Travelling Snack Restaurant food van is now operating at the Lions Lookout. Or if you prefer a



bit of DIY pick up your own local produce at Fruit Loop, The Fruit Corner, S & R Orchard or Valley Fresh Produce.

There are also several new tour companies now operating in the area including Explore Tours Perth (Bickley Valley), Grabba Maxi Tours & Charters (Bickley Valley and bespoke), Platinum Tours Perth (wildlife tours and bespoke), Perth Birds & Bush (bird watching), Down Under Discoveries and d'Vine Tours. If you're not sure

what's in your own backyard pop in to the Perth Hills Visitor Centre in Kalamunda to speak with our friendly staff, pick up a map and brochures and start exploring today.

Landowners who are wishing to diversify their land uses, and potentially embark on tourism or agri-business ventures are encouraged to contact the City of Kalamunda and discuss their options.

Alan Anderson Park Restoration



The City of Kalamunda is restoring Alan Anderson Park to its pre-closure standard for an estimated total project cost of \$498,000. The Park was closed following the discovery of sink holes, which have now been filled, and low level asbestos.

The site will remain fenced until remediation is complete and a site management plan is established.

Spring Festival Set to Excite

Now in its third year the Perth Hills Spring Festival is fast becoming an iconic hills event. The Bickley and Carmel Valley boasts 13 boutique wineries and cideries with charming cellar doors and a range of restaurants and cafes serving appetising menu options from simple platters to à la carte menus. Rivalling the best tourism destinations in WA and offering an authentic and intimate experience, the Perth Hills is best explored through a stunning self-drive tour. Maps are available to download from the Experience Perth Hills website or in person at the Perth Hills Visitor Centre.

Look out for our Perth Hills Spring Festival program, music, kids activities, nature walks, night skies



and even a free movie! The Perth Hills Spring Festival is run by the City of Kalamunda and brings together a host of community-run and private events.

Some events are ticketed and bookings are essential.

What's On - In brief

For full details go to www.kalamunda.wa.gov.au

Stitched and Bound

WA Quilters' Association Exhibition
14–30 July at Zig Zag Gallery

Welcoming Clubs – Our Community

Wednesday 19 July, 6:30pm–
Woodlupine Community Centre

Kalamunda Night Market

Friday 21 July
Central Mall, Kalamunda

Creative Writing: Exploring Poetry through the Ages

Tuesday 25 July,
High Wycombe Library,
15 Markham Rd, High Wycombe

Morning Music: Earl Cole - The Great Crooners

Wednesday 2 August
Kalamunda Performing Arts Centre

Digital Photography Workshop

Wednesday 9 August
Kalamunda Library

QUIT Targa West Rally

Kalamunda Stage: Friday 11
August 11:00am–3:00pm
www.targawest.com.au

Glass Artists of WA Exhibition

4–27 August at Zig Zag Gallery

Comedy Gold

The best of the Adelaide Fringe
Friday 25 August, 8:00pm
Kalamunda Performing Arts Centre

Youth Arts Exhibition

1–17 September at Zig Zag Gallery

The Body in the Bag: Forensics

Talk Tuesday 5 September,
Lesmurdie Library, 21 Reid Rd

Morning Music: Petrina Bishop Barbra Streisand

Wednesday 6 September
Kalamunda Performing Arts Centre

Kalamunda Learning Centre – Open Day

10 September
Jorgensen Park, Crescent Rd,
Kalamunda

Kalamunda Lapidary Club Annual Exhibition

16–17 September,
3 Recreation Road, Kalamunda

Restoration for Reptiles

Bush Skills for the Hills Workshop
Saturday 16 September
Pickering Brook Sports Club

Spring In The Hills

Gem Camera Club Exhibition
21 September – 1 October
Zig Zag Gallery

A Night of Respect & Wonder - AViIDA

Saturday 30 September, 8:00pm
Kalamunda Performing Arts Centre

Perth Hills Spring Festival

Every weekend in October
www.experienceperthhills.com.au

Morning Music:

Tod Johnston & Sue Bluck

Wednesday 4 October
Kalamunda Performing Arts Centre

Pulieu: The Edge of the Forest

7–22 October, Zig Zag Gallery
50 Railway Road, Kalamunda

Kalamunda Open Studios

Sunday 8 October,
10:00am–5:00pm
Artists open their homes and studios.

Gooseberry Hill Arts & Crafts

14–15 October, 10:00am–4:00pm
Kalamunda Agricultural Hall

Keith Potger (founding member of The Seekers)

Thursday 19 October, 7:00pm
Kalamunda Performing Arts Centre

Citizen Science Birds in Backyards App

Saturday 21 October,
Jorgensen Park, Kalamunda

The HMAS Sydney II Story

Tuesday 24 October
Kalamunda Library

Seniors Week Events

29 October – 5 November

Morning Music: Scott Vance presents Sir Paul McCartney

Wednesday 1 November
Kalamunda Performing Arts Centre

Do You See What I See

4–12 November at Zig Zag Gallery

Opera at Twilight in Stirk Park

Saturday 11 November, 5:30pm
www.trybooking.com/MYCW

Get A Taste Of Your Ultimate Self – Mini Meditation Workshop

Thursday 16 November
Forrestfield Library, 3 Salix Way

Pigments of My Imagination

18–26 November at Zig Zag Gallery

Lesmurdie Arts & Crafts Christmas Sale

Sunday 19 November, 10am – 4pm
Falls Farm, 41 Cagney Way.

30 by 30 Exhibition

2–17 December at Zig Zag Gallery

Morning Music: Christmas Show

Wednesday 6 December
Kalamunda Performing Arts Centre

Ramp It Up

Saturday 9 December
Fleming Reserve, High Wycombe

Carols by Candlelight

Sunday 10 December,
Stirk Park, Kalamunda

In Love With WA Exhibition

23 December – 7 January 2018
Zig Zag Gallery

Rates Frequently Asked Questions

What are differential rates and why do we have them?

Differential rates mean there is a different rate for different groups eg: residential, commercial and industrial. In 2009 differential rates were introduced by the City because the State Valuer General determined residential property values in the area had increased differently to commercial and industrial land in the City. Local Government rates are tied to the State Valuer General's determination. Without the introduction of differential rates the necessary rates increase would have burdened residents significantly more.

Why have rates increased?

As the City's population grows, it is true we receive more rates revenue. However, we also have an increased demand for services, higher usage of our roads, parks and public buildings – which leads to more maintenance and service. We have a vision to provide for connected communities, valuing nature and creating our future together, by delivering exceptional services and we need to build our capacity and resources to do that.

Costs of utilities and services passed down by the State have also increased more than the rate of inflation and we need to fill that gap.

Many of the City's assets are ageing and require increasing amounts of maintenance. The Long Term Financial Plan aims to bridge the gap and increasing rates will help to achieve this.

The overall objective is to provide for the net funding requirements of the Council's activities and works programs outlined in the Long Term Financial Plan.

The City's General Rate is historically lower than most of our immediate neighbours and a number of other metropolitan Local Governments with the minimum rate being appreciably

lower. We understand these are tough economic times, and it is important to find a balance. The slight raising of rates will enable the City to maintain sustainable operations, deliver on capital works programs and provide the services required by the community.

How are my rates calculated?

$\text{RATE (cents in \$ set by the City)} \times \text{Valuation (set by the Valuer General)} = \text{Yearly Fees}$

Rate – The City charges a differential rate across properties in the Region. The rates are calculated to provide income to fund the next year's budget which also takes into account other sources of income the City has.

Valuation – Every three years the Valuer General assesses all rateable properties within the City. The valuation is a fair and independent assessment of the rental earning potential for the property. The property is therefore rated by its current earning potential, rather than its resale value. For further information about the valuation of your property, contact the Valuer General's office on 9237 7373.

Yearly fees – Yearly fees are clearly marked on your rates notice and include the Emergency Services Levy (ESL) – charged to all property owners in WA to fund fire and emergency services in the region. The City collects this levy on behalf of the Department of Fire and Emergency Services (DFES) who then redistributes the money to emergency services throughout the State. For more information refer to the ESL section of the DFES website at dfes.wa.gov.au or freecall 1300 136 099.

The City also collects the following levies.

- **WARR Levy** – A small charge imposed on all properties in the City. Funds raised from this levy are used to rehabilitate contaminated sites around the

City such as old land fill sites and areas contaminated with asbestos.

- **Refuse Charges** – Waste charges are applied to most properties around the City and depend on the level of service being received by each property. These charges include the cost of disposing of waste and recycling for each property, maintenance of the Waste Transfer Station and the cost of illegal dumping.
- **Pool Inspection Fee** – A charge applied to properties that have a pool on site. Pool inspections are performed once every three years however the fee is split across the three years to ease the burden on ratepayers.

Are there any additional costs I may incur?

Paying by instalments will incur an administration fee as shown on your rate notice. An administration fee will also be incurred for Direct Debit arrangements. Payments received after the due date will incur late payment penalty interest. Only pensioners do not pay any fees or interest on instalments or late fees.

- A Credit Card surcharge of 0.46% applies to all Credit Card and Paypass/Tap and Go transactions with the City.
- Late payment penalty = 11% per annum
- Administration fee (instalments) \$7 per instalment
- Instalment interest 5.5% - This is calculated and shown on your notice as part of the cost of instalments.

How can I update my details?

If you have moved in the past 12 months, please contact the City to update your details.

City of Kalamunda, PO Box 42,
KALAMUNDA WA 6926

enquiries@kalamunda.wa.go.au

PAULA PARORE

CLAY DARIUS

STEVIE
WONDER

ARETHA
FRANKLIN

AVIIDA
PRODUCTIONS
PRESENTS

A NIGHT OF RESPECT & WONDER

STEVIE WONDER AND ARETHA FRANKLIN SUNG BY AVIIDA

SATURDAY | SEP 30 2017

KALAMUNDA PERFORMING ARTS CENTRE

48 CANNING ROAD, KALAMUNDA

"HARMONIES THAT BLOW YOUR MIND" - JESSIE J

"YOU TWO ARE SUCH PRO'S, I LOVE YOUR VOICES" - DELTA GOODREM

"I LOVE THE CHEMISTRY YOU TWO BRING ON STAGE" - RICKY MARTIN

"YOU ARE VOCALLY THE BEST SINGERS ON THAT STAGE, I CHOOSE AVIIDA" - JOEL MADDEN

TICKETS \$30 ADULT \$25 CONCESSION \$23 GROUPS 10+

WWW.KALAMUNDA.WA.GOV.AU/KPAC OR TEL 9257 2558

www.aviida.com.au

